

HORIZONTAL KARRIER™ PANEL - FLAT RAIL - METAL FACADE

FRKPH-DS-01-MTLV	C & I DISCLAIMER
FRKPH-PP-01-MTLV	PANEL PROFILES
FRKPH-PJ-02-MTLV	PANEL PROFILES
FRKPH-PJ-01-MTLV	EXPANDED PANEL JOINT
FRKPH-PJ-02-MTLV	ENGAGED PANEL JOINT
FRKPH-PJ-03-MTLV	INTERMEDIATE SUPPORT
FRKPH-PJ-04-MTLV	VERTICAL JOINT
FRKPH-PJ-05-MTLV	VERT. JOINT BETWEEN STUDS
FRKPH-FS-01-MTLV	MULTI-STORY FIRE STOPPING DETAIL
FRKPH-FS-02-MTLV	MULTI-STORY FIRE STOPPING ASSEMBLY
FRKPH-FS-03-MTLV	MULTI-STORY FIRE STOPPING ASSEMBLY
FRKPH-BS-01-MTLV	BASE DETAIL FLUSH
FRKPH-BS-02-MTLV	BASE DETAIL FLUSH W/ EXTRUSION
FRKPH-BS-03-MTLV	BASE AT NOTCHED CONCRETE
FRKPH-BS-04-MTLV	BASE AT OVERHANG
FRKPH-BS-05-MTLV	BASE AT OVERHANG - SINGLE SKIN
FRKPH-OC-01-MTLV	OUTSIDE CORNER
FRKPH-IC-01-MTLV	INSIDE CORNER
FRKPH-FO-01-MTLV	FRAMED OPENING HEAD
FRKPH-FO-02-MTLV	FRAMED OPENING JAMB
FRKPH-FO-04-MTLV	FRAMED OPENING SILL
FRKPH-PR-01-MTLV	PARAPET DETAIL
FRKPH-LE-01-MTLV	LOW EAVE DETAIL
FRKPH-RD-01-MTLV	RAKE DETAIL
FRKPH-TP-01-MTLV	PANEL TERMINATION
FRKPH-TL-01-MTLV	TRIM END LAP
FRKPH-TL-02-MTLV	TRIM END LAP WITH HEM

INDEX SHEET

DETAIL #: FRKPH-XX-XX-MTLV

DATE: 2019



www.kingspanpanels.us
www.kingspanpanels.ca

HORIZONTAL KARRIER™ PANEL - FLAT RAIL - METAL FACADE

DISCLAIMERS:

THESE DETAILS ARE PROVIDED AS A GUIDELINE FOR PROPER PANEL AND ASSOCIATED COMPONENT INSTALLATION, AND ARE BASED ON INDUSTRY ACCEPTED PRACTICES.

LOCATION OF VAPOR BARRIERS AND ASSOCIATED SEALANTS IN THESE DETAILS ARE BASED ON TYPICAL DESIGN PRACTICES FOR MOST U.S. AND CANADIAN CLIMATIC ZONES. (THE PRIMARY VAPOR BARRIER IS PLACED ON THE "WARM" SIDE IN WINTER).

PROJECTS LOCATED IN AREAS SUBJECT TO EXTREME COLD AND/OR HIGH SNOW LOADS MAY REQUIRE MODIFICATIONS TO THESE DETAILS - CONTACT KINGSPAN TECHNICAL SERVICES FOR SPECIFIC PROJECT RECOMMENDATIONS.

ALL STRUCTURAL SUPPORTS ARE NOT BY KINGSPAN AND ARE SHOWN FOR CLARIFICATION AND ILLUSTRATION PURPOSES ONLY.

WALL SYSTEM DEFLECTIONS ARE TO BE DETERMINED BY THE ENGINEER OF RECORD.

ALL DETAILS ARE BASED ON TYPICAL STUD WALL CONSTRUCTION WITH SINGLE FASTENER. FOR ATTACHMENT TO OTHER WALL SUPPORT SYSTEMS, PLEASE CONTACT KINGSPAN TECHNICAL SERVICES FOR FASTENING RECOMMENDATIONS.

CONTACT KINGSPAN TECHNICAL SERVICES FOR MAXIMUM ALLOWABLE PANEL SPANS AND FASTENING PATTERNS.

DISCLAIMER

DETAIL #: FRKPH-DS-01-MTLV

DATE: 2019



www.kingspanpanels.us
www.kingspanpanels.ca

HORIZONTAL KARRIER™ PANEL - FLAT RAIL - METAL FACADE

CORE DEPTHS:
2", 2.5", 3", 4", 5", 6"

STEEL GAUGES:
EXTERIOR: REFER TO PROFILE
INTERIOR: 26, 24, 22

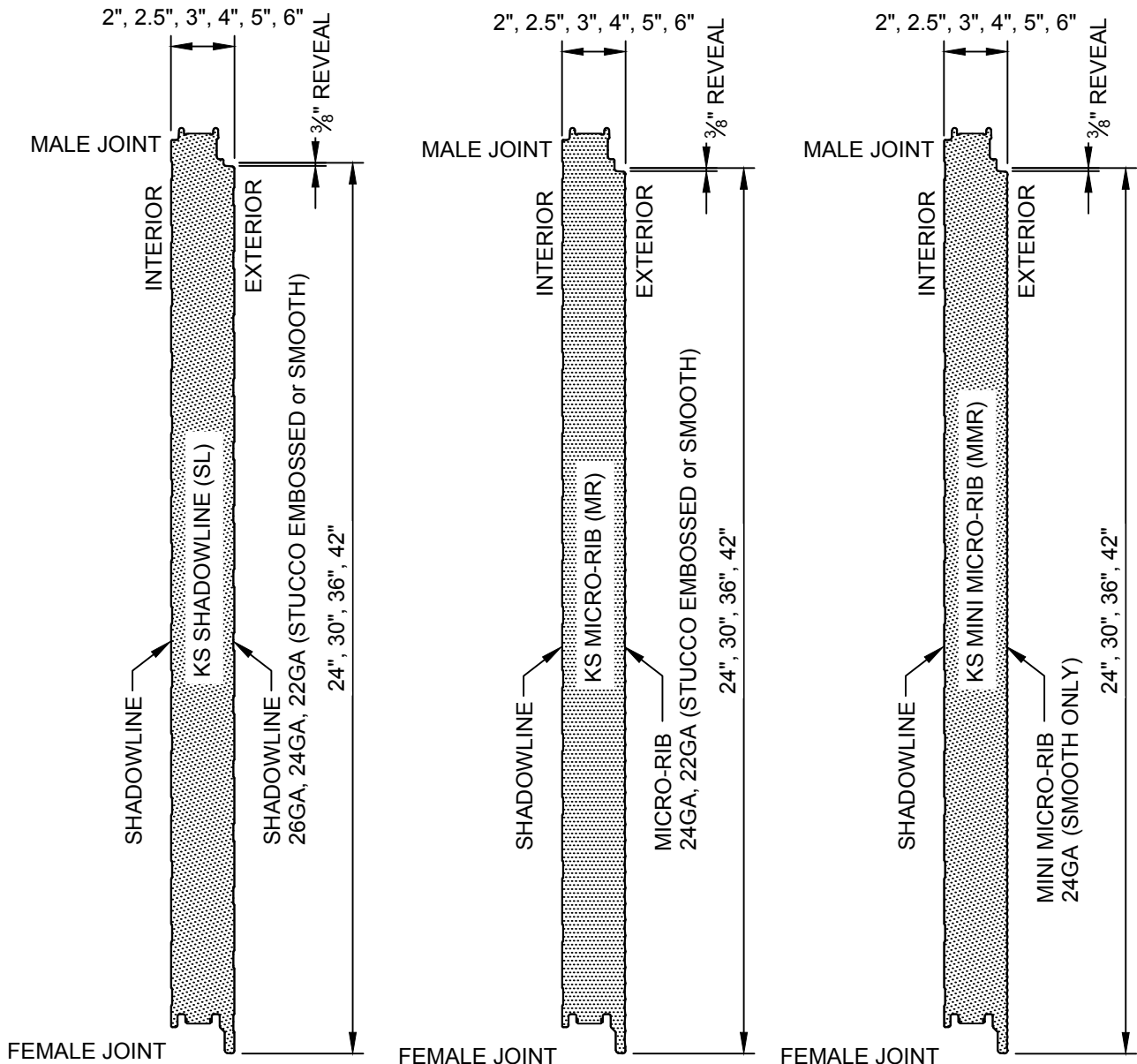
REVEAL OPTIONS:
 $\frac{1}{8}"$ or $\frac{3}{8}"$

MODULE WIDTH:
24", 30", 36", 42"

PANEL ORIENTATION:
VERTICAL or HORIZONTAL

REVEAL: $\frac{3}{8}"$
($\frac{3}{8}"$ REVEAL IS REQUIRED
FOR ALL KARRIER RAIL
APPLICATIONS)

EMBOSSING:
EXTERIOR: REFER TO PROFILE
INTERIOR: STUCCO / SMOOTH
LENGTHS:
MINIMUM: 8'-0"
MAXIMUM: 53'-0"



PANEL PROFILES

DETAIL #: FRKPH-PP-01-MTLV

DATE: 2019



www.kingspanpanels.us
www.kingspanpanels.ca

HORIZONTAL KARRIER™ PANEL - FLAT RAIL - METAL FACADE

CORE DEPTHS:
2", 2.5", 3", 4", 5", 6"

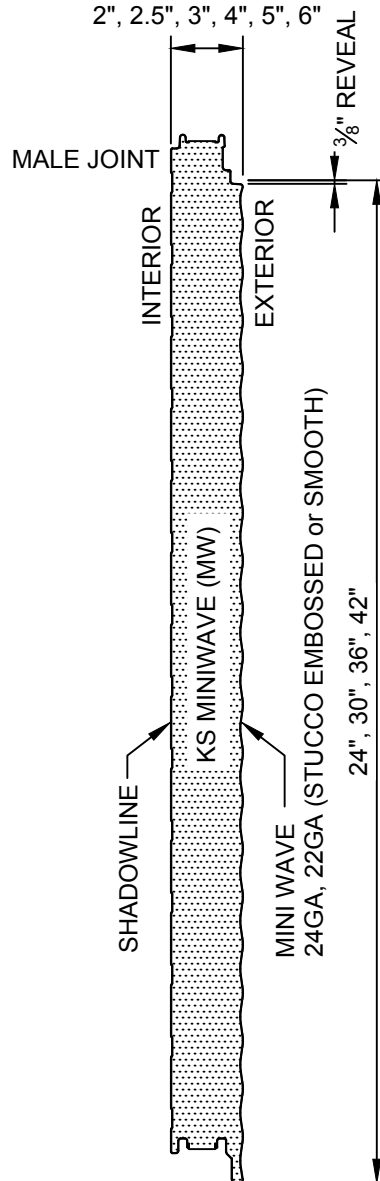
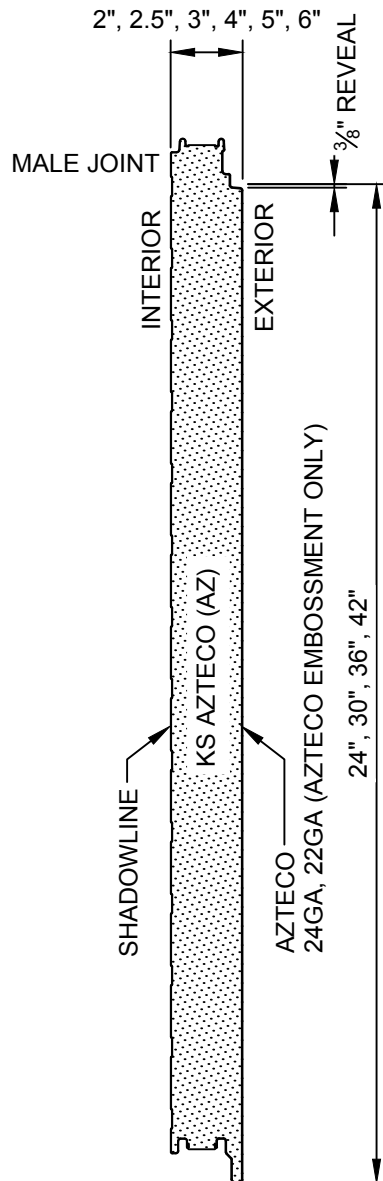
STEEL GAUGES:
EXTERIOR: REFER TO PROFILE
INTERIOR: 26, 24, 22

REVEAL OPTIONS:
 $\frac{1}{8}"$ or $\frac{3}{8}"$

MODULE WIDTH:
24", 30", 36", 42"

PANEL ORIENTATION:
VERTICAL or HORIZONTAL

EMBOSSING:
EXTERIOR: REFER TO PROFILE
INTERIOR: STUCCO / SMOOTH
LENGTHS:
MINIMUM: 8'-0"
MAXIMUM: 53'-0"



PANEL PROFILES

DETAIL #: FRKPH-PP-02-MTLV

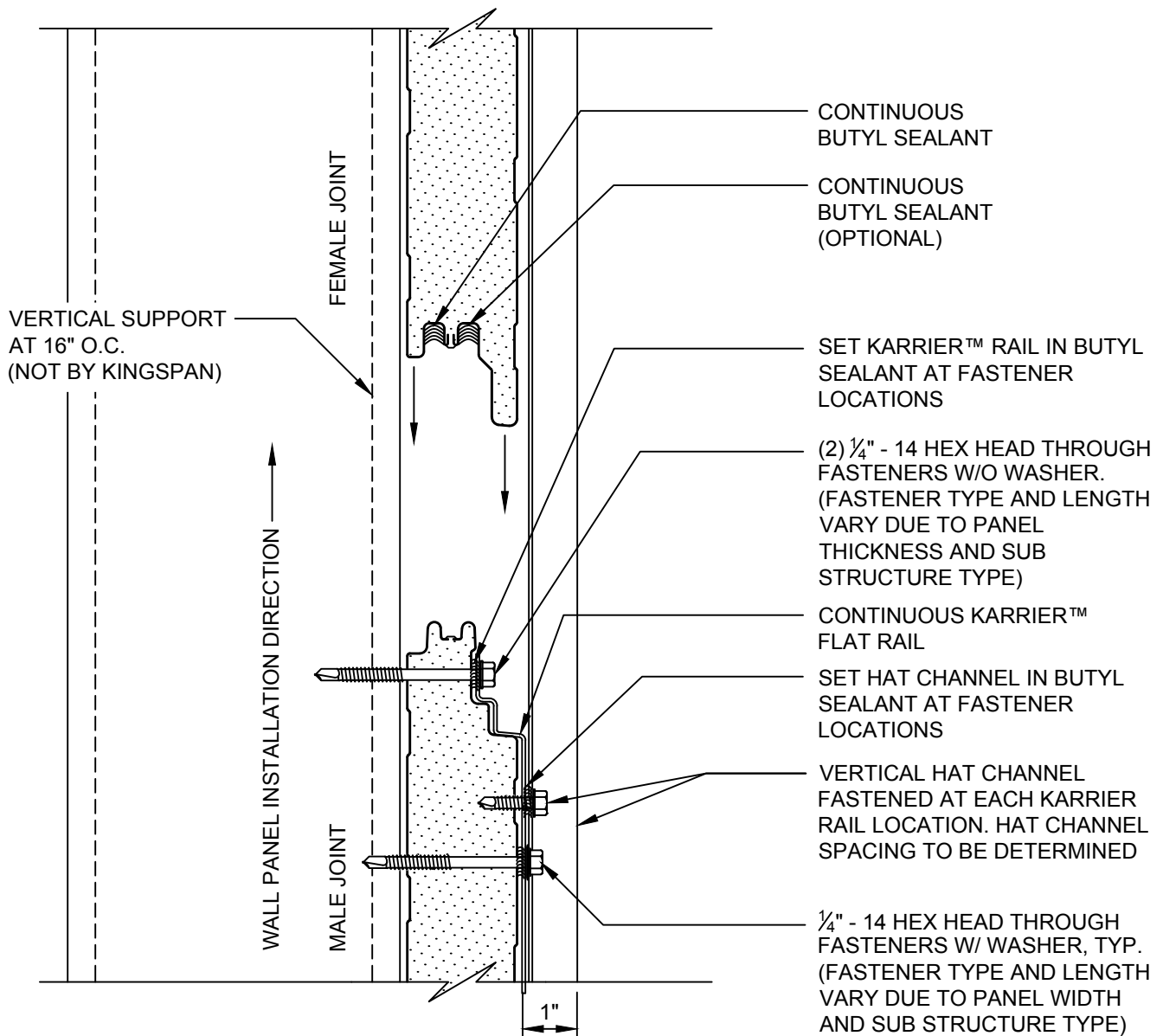
DATE: 2019



www.kingspanpanels.us
www.kingspanpanels.ca

HORIZONTAL KARRIER™ PANEL - FLAT RAIL - METAL FACADE

NOTE:
FOR PROJECTS REQUIRING NFPA 285:
INTERIOR SIDE OF FRAMING MUST
HAVE $\frac{5}{8}$ " THICK FIRE BLOCK TYPE X
GYPSUM BOARD (NOT BY KINGSPAN)



EXPANDED PANEL
JOINT

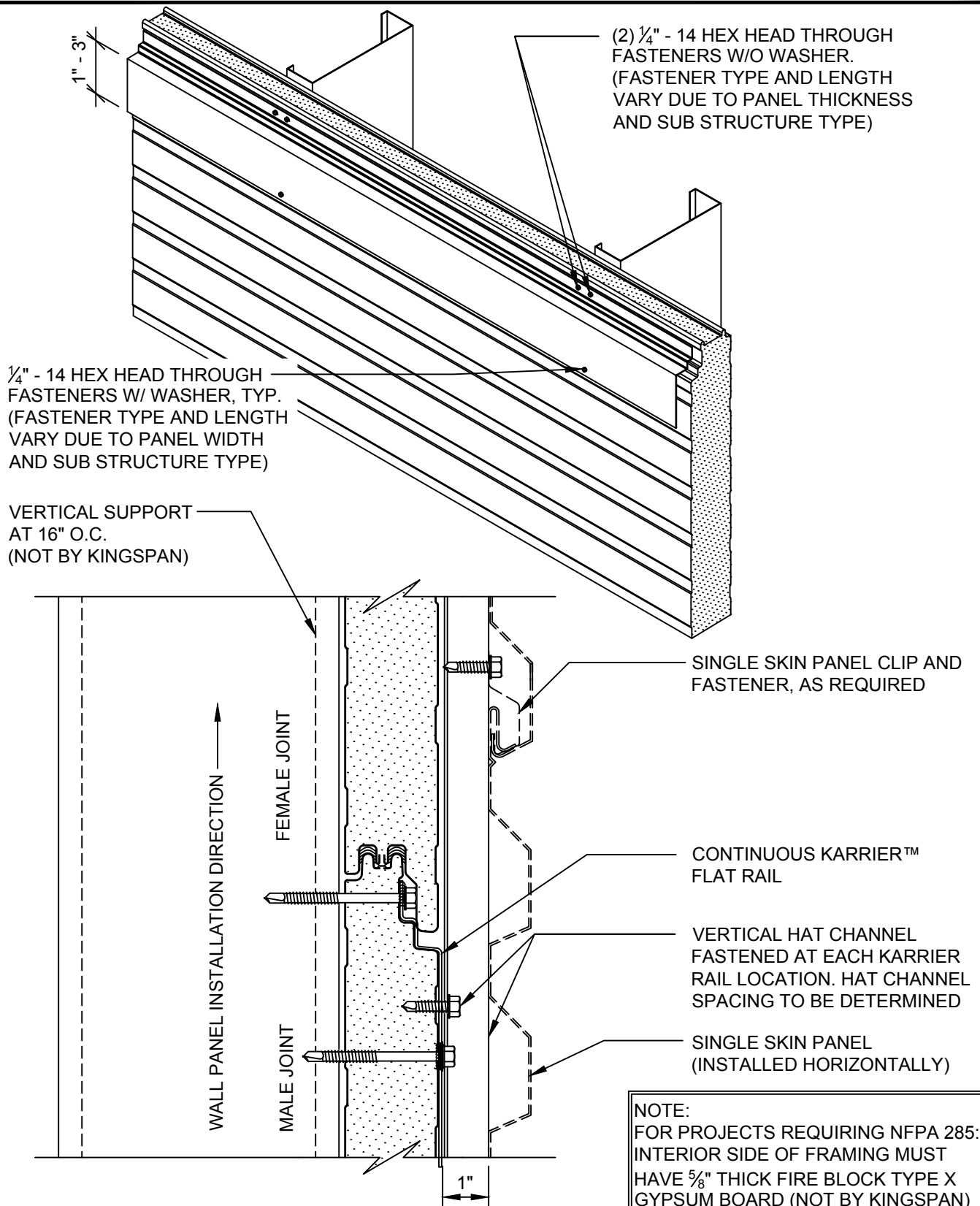
DETAIL #: FRKPH-PJ-01-MTLV

DATE: 2019



www.kingspanpanels.us
www.kingspanpanels.ca

HORIZONTAL KARRIER™ PANEL - FLAT RAIL - METAL FACADE



ENGAGED PANEL
JOINT

DETAIL #: FRKPH-PJ-02-MTLV

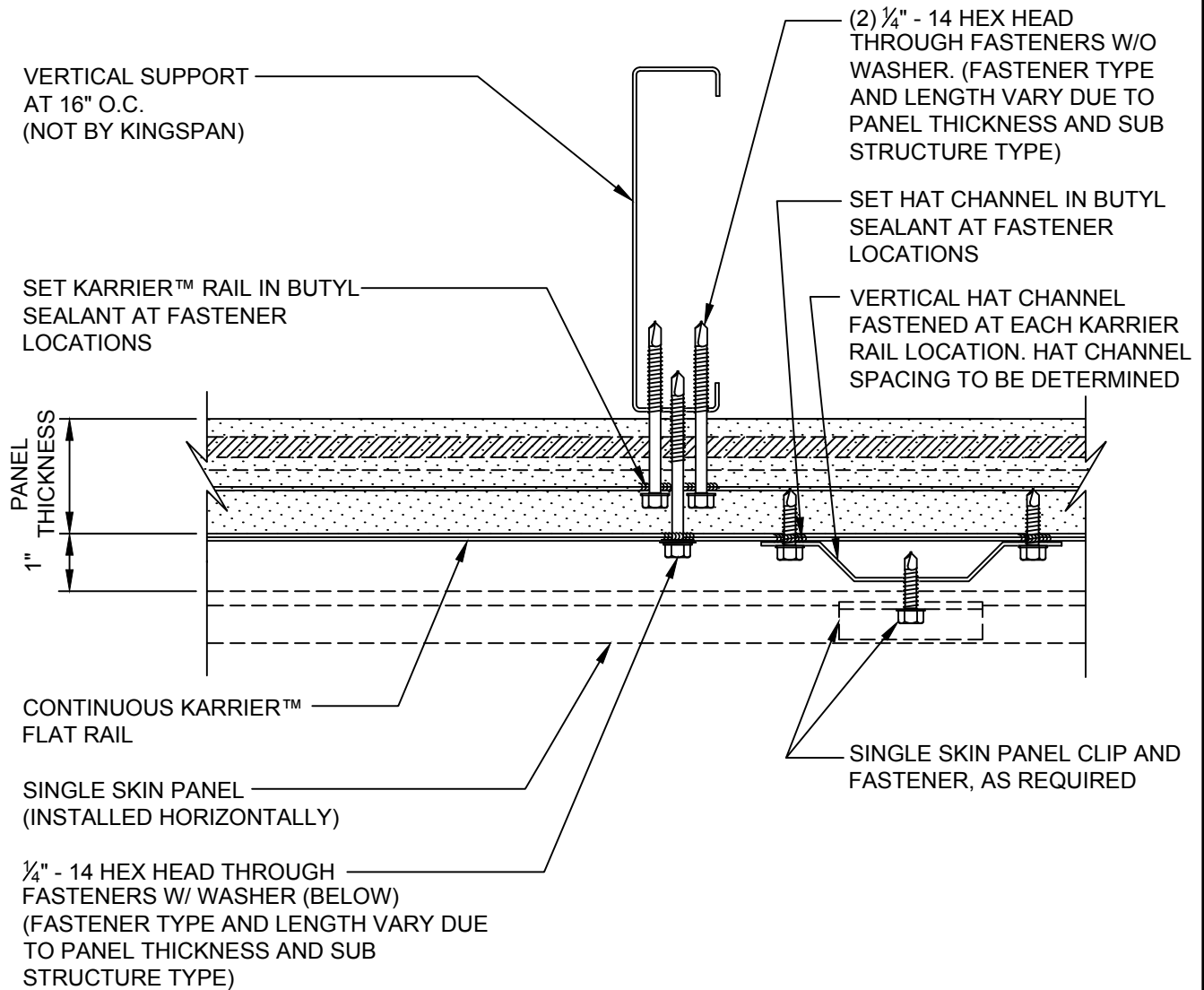
DATE: 2019



www.kingspanpanels.us
www.kingspanpanels.ca

HORIZONTAL KARRIER™ PANEL - FLAT RAIL - METAL FACADE

NOTE:
FOR PROJECTS REQUIRING NFPA 285:
INTERIOR SIDE OF FRAMING MUST
HAVE $\frac{5}{8}$ " THICK FIRE BLOCK TYPE X
GYPSUM BOARD (NOT BY KINGSPAN)



NOTE:
CONTACT KINGSPAN TECHNICAL SERVICES FOR SPECIFIC PROJECT RECOMMENDATIONS

INTERMEDIATE
SUPPORT

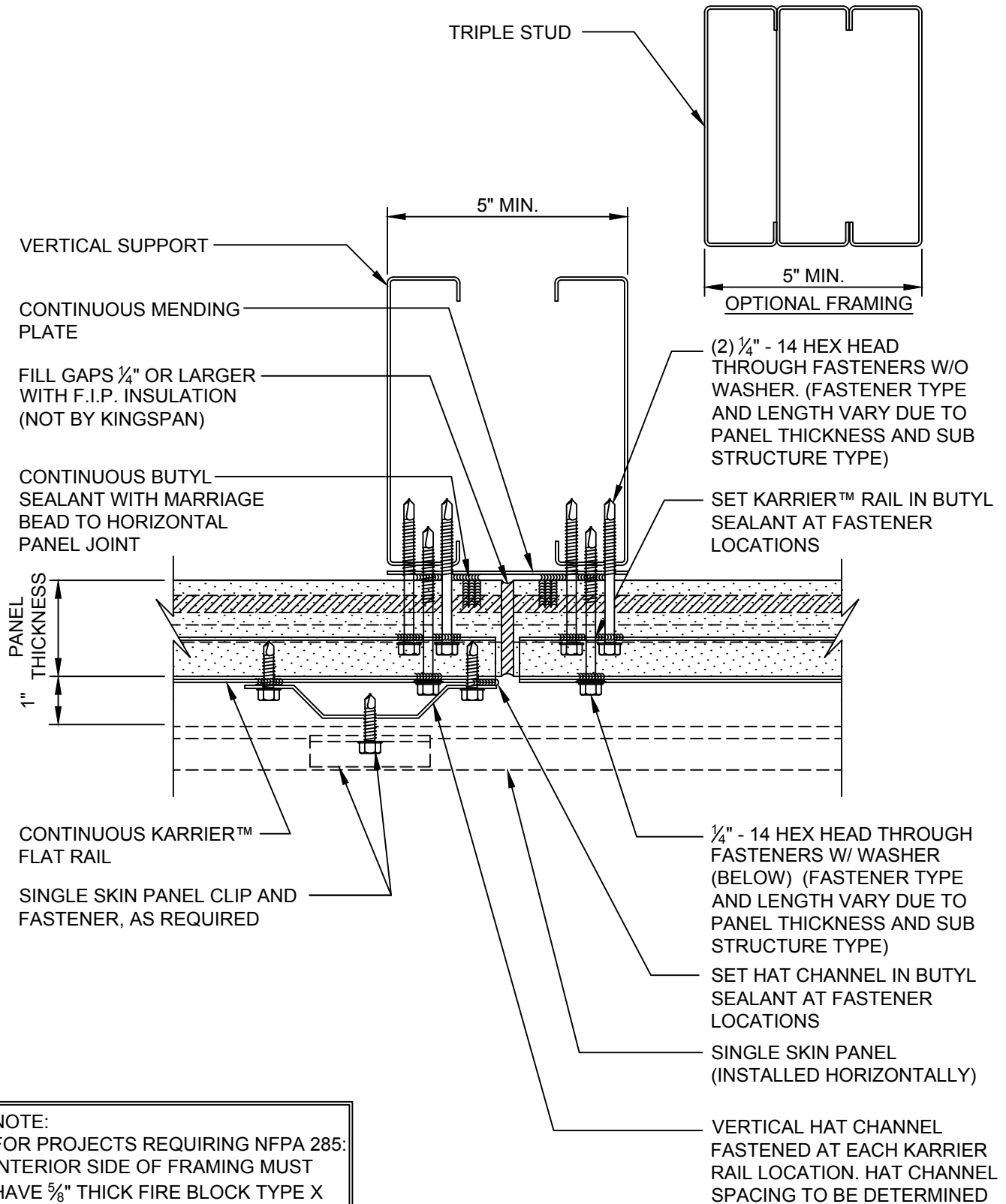
DETAIL #: FRKPH-PJ-03-MTLV

DATE: 2019



www.kingspanpanels.us
www.kingspanpanels.ca

HORIZONTAL KARRIER™ PANEL - FLAT RAIL - METAL FACADE



VERTICAL JOINT

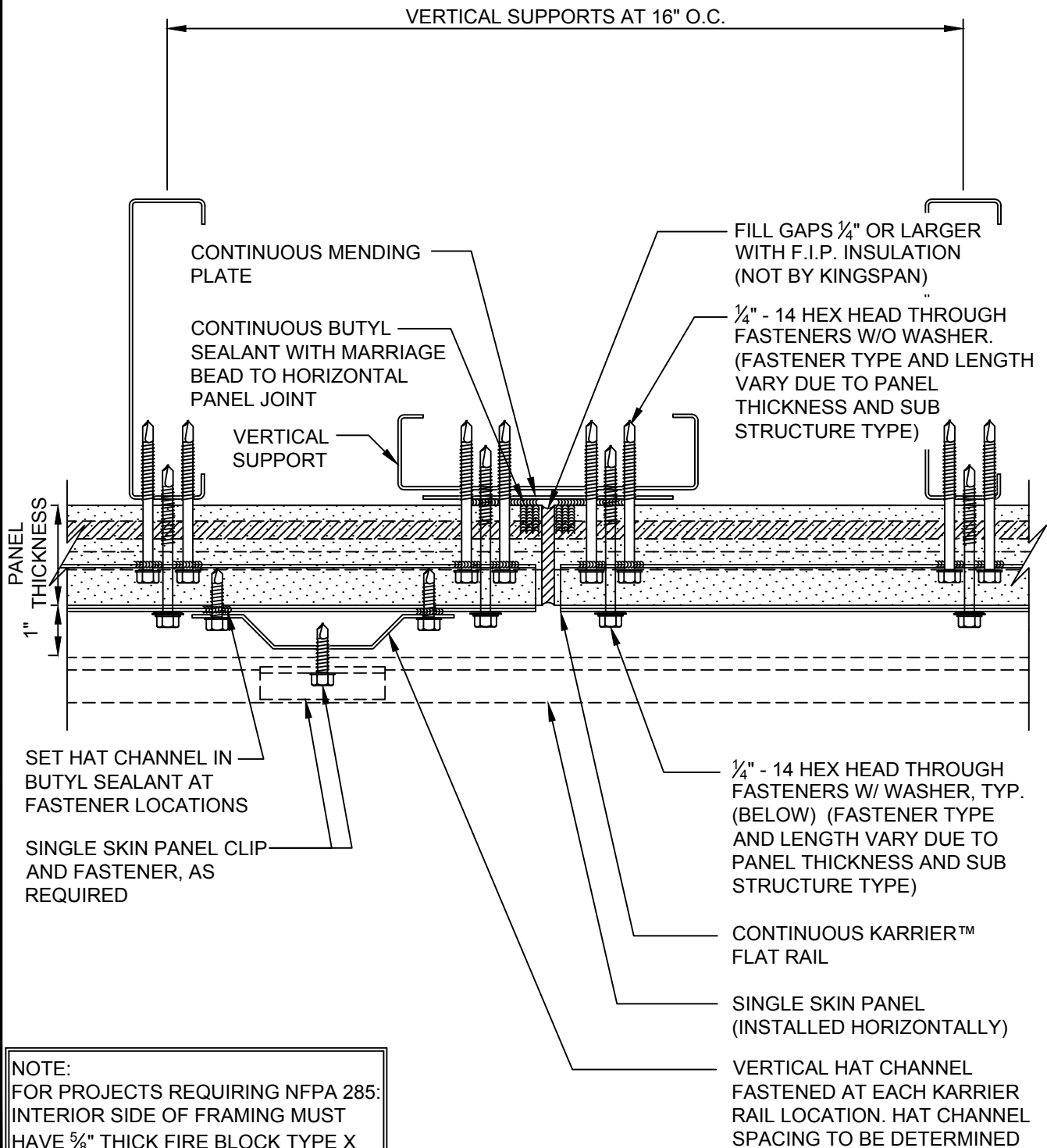
DETAIL #: FRKPH-PJ-04-MTLV

DATE: 2019



www.kingspanpanels.us
www.kingspanpanels.ca

HORIZONTAL KARRIER™ PANEL - FLAT RAIL - METAL FACADE



VERTICAL JOINT BETWEEN STUDS

DETAIL #: FRKPH-PJ-05-MTLV

DATE: 2019



www.kingspanpanels.us
www.kingspanpanels.ca

HORIZONTAL KARRIER™ PANEL - FLAT RAIL - METAL FACADE

NOTE:
FASTENING AND OTHER MATERIALS
NOT SHOWN FOR CLARITY OF
DETAIL

FLOOR SLAB, FRAMING
AND OTHER MATERIALS
(NOT BY KINGSPAN)

KARRIER PANEL
INSTALLED
HORIZONTALLY

FACADE PANEL
(INSTALLED
VERTICALLY)

F.F.

8" MIN

COMPLETELY FILL VOID BETWEEN
INSULATED METAL PANEL SYSTEM
AND FACADE WITH MIN 4PSI
CONTINUOUS FIRE BLOCKING AT
EACH FLOOR LINE
(NOT BY KINGSPAN)

INSULATION WASHER
AND FASTENERS @
12" O.C.
(NOT BY KINGSPAN)

NOTE:
FOR PROJECTS REQUIRING NFPA 285:
INTERIOR SIDE OF FRAMING MUST
HAVE $\frac{5}{8}$ " THICK FIRE BLOCK TYPE X
GYPSUM BOARD (NOT BY KINGSPAN)

VOID

**MULTI-STORY FIRE
STOPPING DETAIL**

DETAIL #: FRKPH-FS-01-MTLV

DATE: 2019


Kingspan
Insulated Panels

www.kingspanpanels.us
www.kingspanpanels.ca

HORIZONTAL KARRIER™ PANEL - FLAT RAIL - METAL FACADE

NOTE:
FOR PROJECTS REQUIRING NFPA 285:
INTERIOR SIDE OF FRAMING MUST
HAVE 5/8" THICK FIRE BLOCK TYPE X
GYPSUM BOARD (NOT BY KINGSPAN)

VERTICAL HAT CHANNEL
FASTENED AT EACH KARRIER
RAIL LOCATION. HAT CHANNEL
SPACING TO BE DETERMINED

KARRIER PANEL INSTALLED
HORIZONTALLY KARRIER RAIL
NOT SHOWN FOR CLARITY

FLOOR SLAB, FRAMING
AND OTHER MATERIALS
(NOT BY KINGSPAN)

KARRIER FLAT
RAIL

INSULATION
WASHER AND
FASTENERS @
12" O.C.
(NOT BY
KINGSPAN)

COMPLETELY FILL VOID
BETWEEN INSULATED
METAL PANEL SYSTEM AND
FACADE WITH MIN. 4 PSI
CONTINUOUS FIRE
BLOCKING AT EACH FLOOR
LINE
(NOT BY KINGSPAN)

MAXIMUM 20'-0"

COMPLETELY FILL VOID
BETWEEN INSULATED METAL PANEL SYSTEM
AND FACADE WITH MIN. 4 PSI
CONTINUOUS FIRE BLOCKING AT
MAX. 20'-0" O.C. SPACING
(NOT BY KINGSPAN)

**MULTI-STORY FIRE
STOPPING ASSEMBLY**

DETAIL #: FRKPH-FS-02-MTLV

DATE: 2019

Kingspan
Insulated Panels

www.kingspanpanels.us
www.kingspanpanels.ca

HORIZONTAL KARRIER™ PANEL - FLAT RAIL - METAL FACADE

NOTE:
FOR PROJECTS REQUIRING NFPA 285:
INTERIOR SIDE OF FRAMING MUST
HAVE $\frac{5}{8}$ " THICK FIRE BLOCK TYPE X
GYPSUM BOARD (NOT BY KINGSPAN)

VERTICAL HAT CHANNEL
FASTENED AT EACH KARRIER
RAIL LOCATION. HAT CHANNEL
SPACING TO BE DETERMINED

INSULATION
WASHER AND
FASTENERS @
12" O.C.
(NOT BY
KINGSPAN)

KARRIER PANEL INSTALLED
HORIZONTALLY KARRIER RAIL
NOT SHOWN FOR CLARITY

FLOOR SLAB, FRAMING
AND OTHER MATERIALS
(NOT BY KINGSPAN)

KARRIER FLAT
RAIL

FACADE PANEL
(INSTALLED
VERTICALLY)

COMPLETELY FILL VOID
BETWEEN INSULATED
METAL PANEL SYSTEM AND
FACADE WITH MIN. 4 PSI
CONTINUOUS FIRE
BLOCKING AT EACH FLOOR
LINE
(NOT BY KINGSPAN)

MULTI-STORY FIRE
STOPPING ASSEMBLY

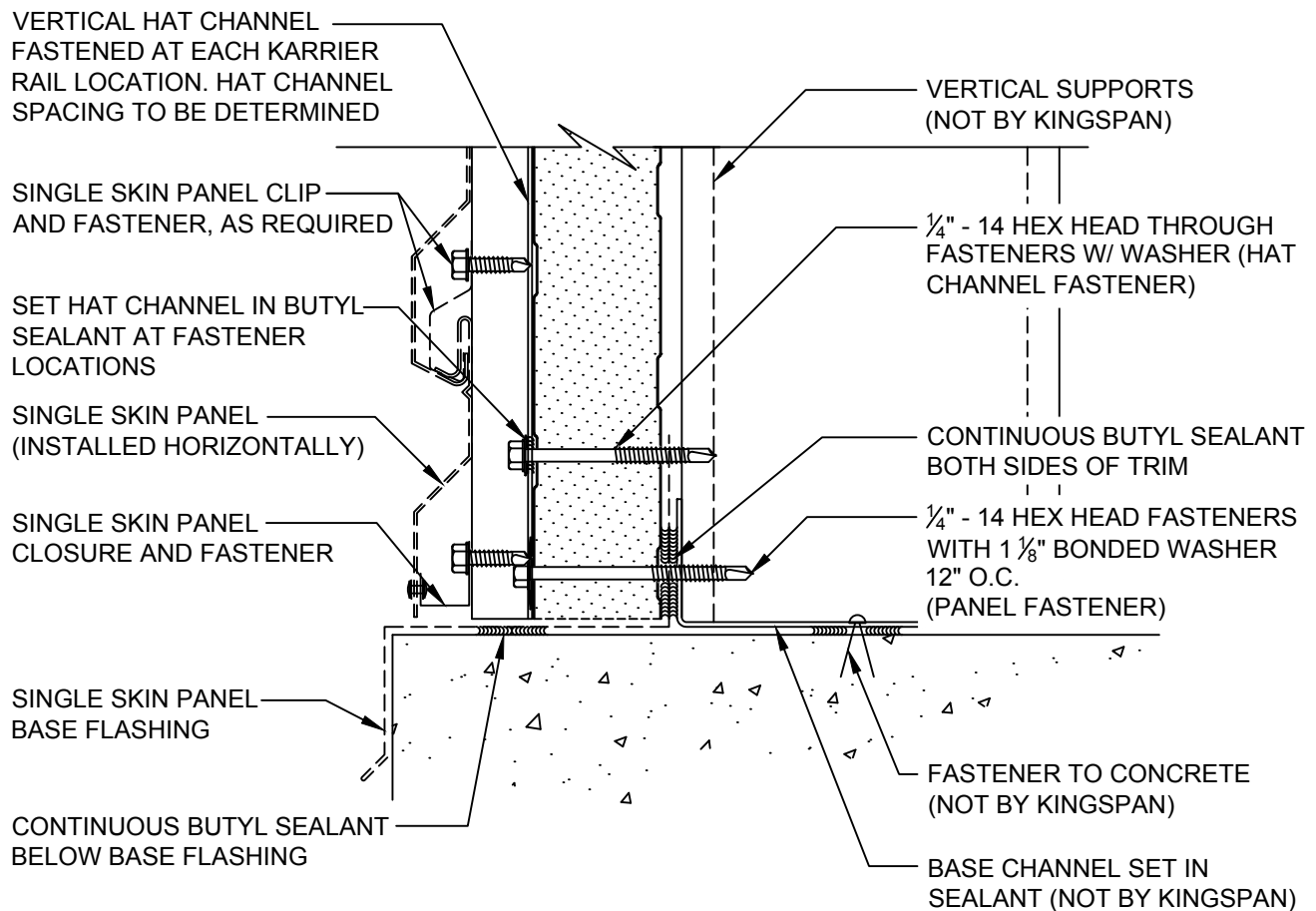
DETAIL #: FRKPH-FS-03-MTLV

DATE: 2019


Kingspan
Insulated Panels

www.kingspanpanels.us
www.kingspanpanels.ca

HORIZONTAL KARRIER™ PANEL - FLAT RAIL - METAL FACADE



NOTE:
FOR PROJECTS REQUIRING NFPA 285:
INTERIOR SIDE OF FRAMING MUST
HAVE 5/8" THICK FIRE BLOCK TYPE X
GYPSUM BOARD (NOT BY KINGSPAN)

**BASE DETAIL
FLUSH**

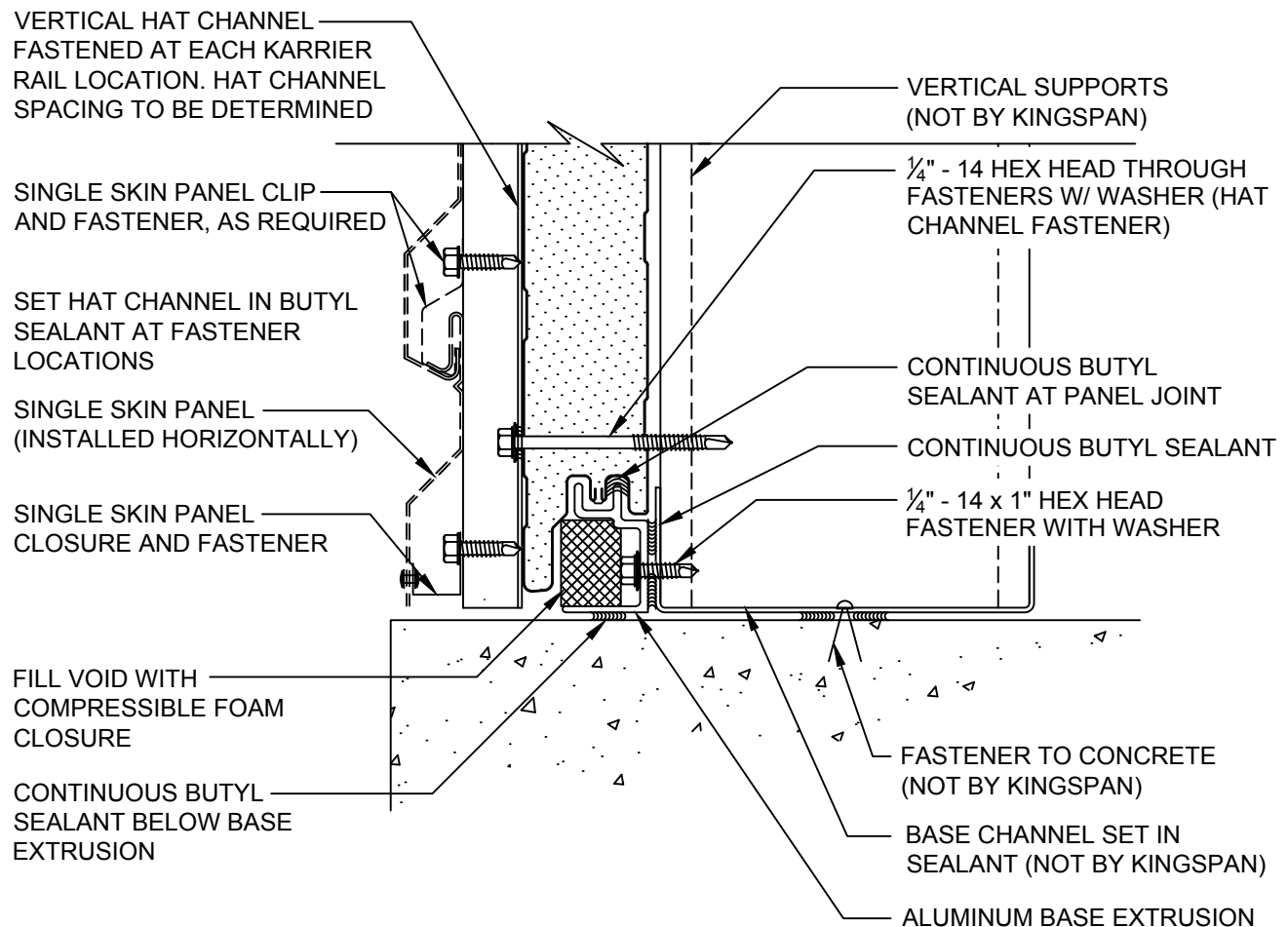
DETAIL #: FRKPH-BS-01-MTLV

DATE: 2019


Kingspan
Insulated Panels

www.kingspanpanels.us
www.kingspanpanels.ca

HORIZONTAL KARRIER™ PANEL - FLAT RAIL - METAL FACADE



NOTE:
FOR PROJECTS REQUIRING NFPA 285:
INTERIOR SIDE OF FRAMING MUST
HAVE 5/8" THICK FIRE BLOCK TYPE X
GYPSUM BOARD (NOT BY KINGSPAN)

**BASE DETAIL
FLUSH WITH
EXTRUSION**

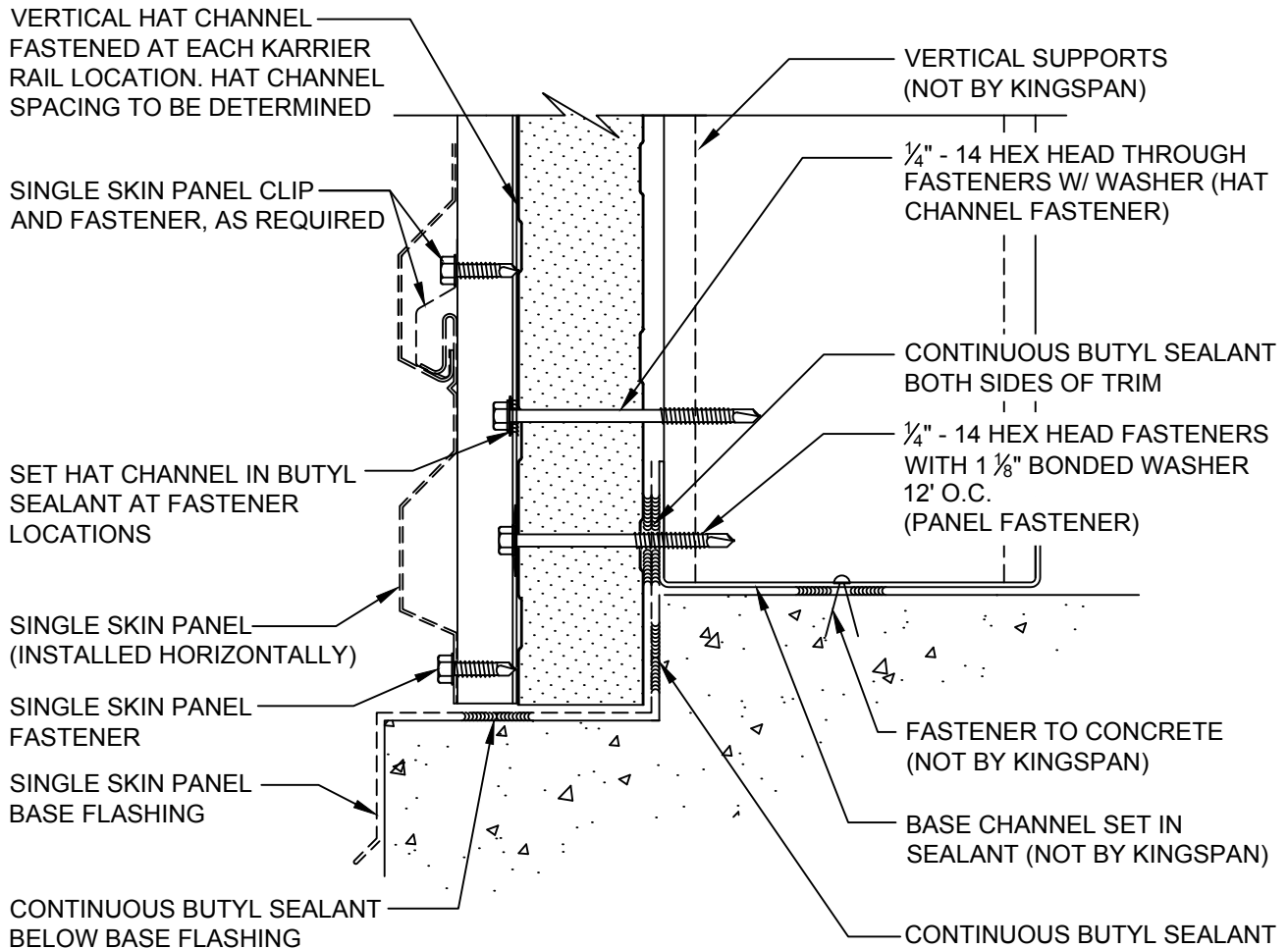
DETAIL #: FRKPH-BS-02-MTLV

DATE: 2019



www.kingspanpanels.us
www.kingspanpanels.ca

HORIZONTAL KARRIER™ PANEL - FLAT RAIL - METAL FACADE



NOTE:
FOR PROJECTS REQUIRING NFPA 285:
INTERIOR SIDE OF FRAMING MUST
HAVE 5/8" THICK FIRE BLOCK TYPE X
GYPSUM BOARD (NOT BY KINGSPAN)

BASE AT NOTCHED
CONCRETE

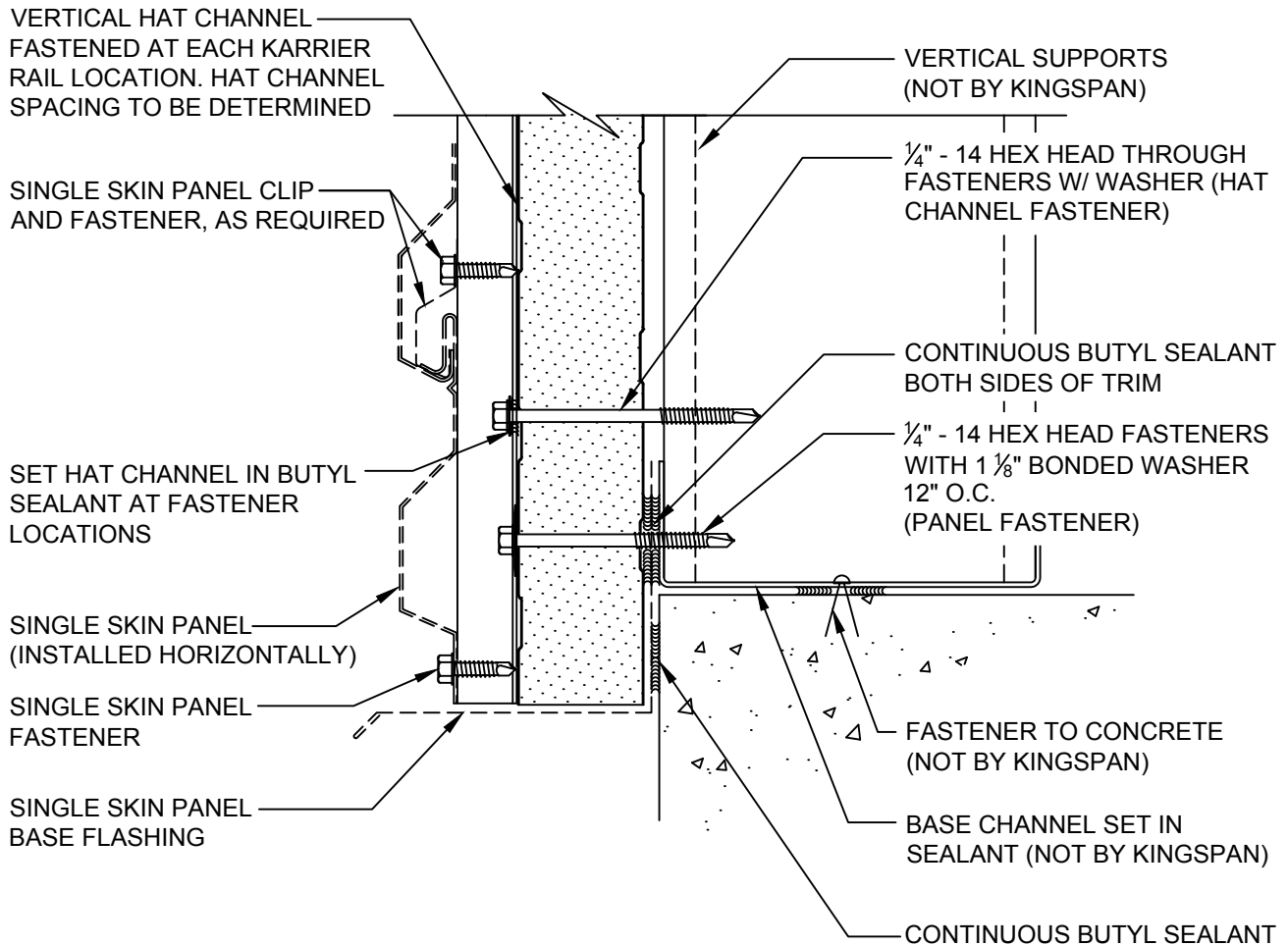
DETAIL #: FRKPH-BS-03-MTLV

DATE: 2019



www.kingspanpanels.us
www.kingspanpanels.ca

HORIZONTAL KARRIER™ PANEL - FLAT RAIL - METAL FACADE



NOTE:
FOR PROJECTS REQUIRING NFPA 285:
INTERIOR SIDE OF FRAMING MUST
HAVE 5/8" THICK FIRE BLOCK TYPE X
GYPSUM BOARD (NOT BY KINGSPAN)

BASE AT OVERHANG

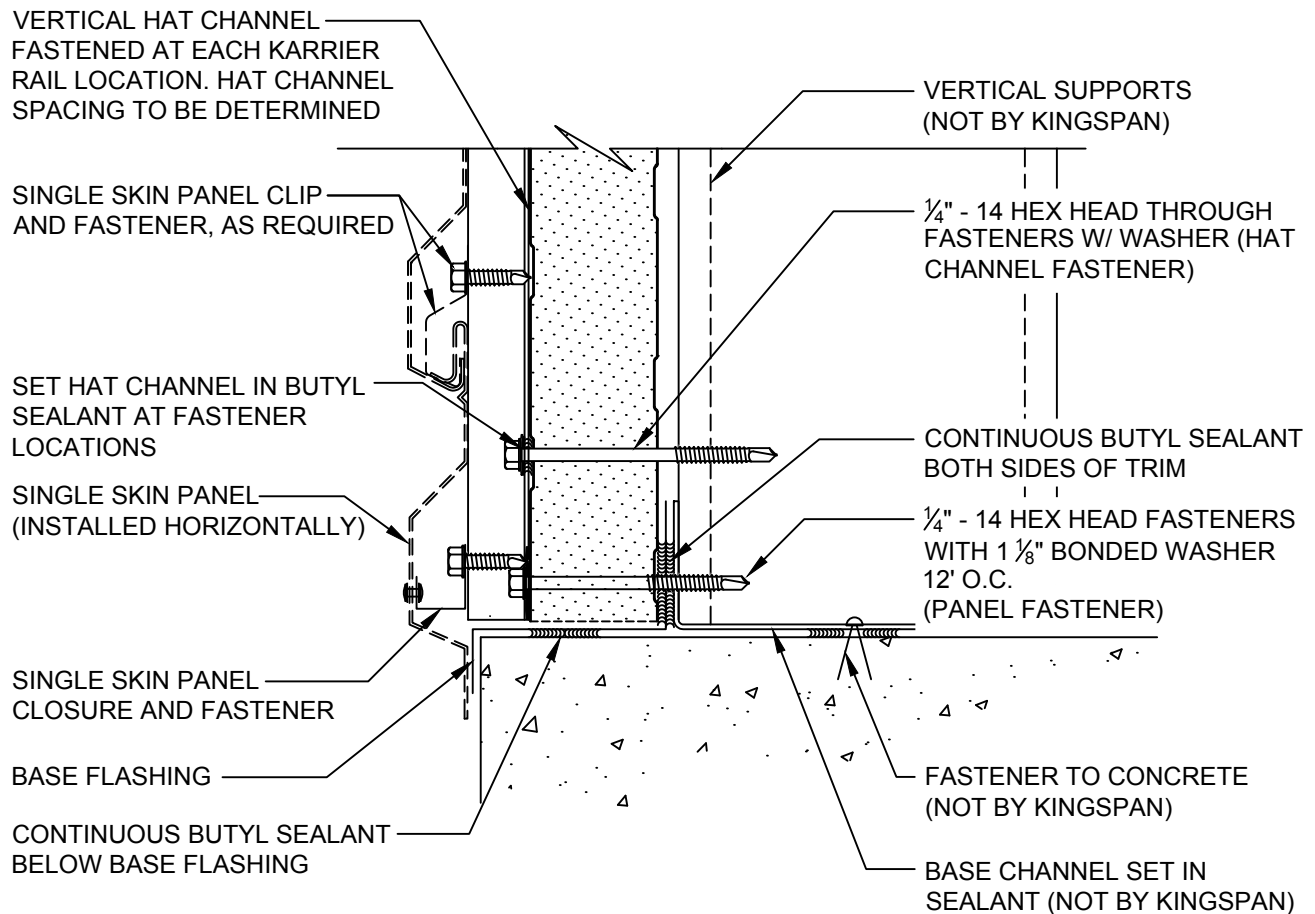
DETAIL #: FRKPH-BS-04-MTLV

DATE: 2019


Kingspan
Insulated Panels

www.kingspanpanels.us
www.kingspanpanels.ca

HORIZONTAL KARRIER™ PANEL - FLAT RAIL - METAL FACADE



NOTE:
FOR PROJECTS REQUIRING NFPA 285:
INTERIOR SIDE OF FRAMING MUST
HAVE 5/8" THICK FIRE BLOCK TYPE X
GYPSUM BOARD (NOT BY KINGSPAN)

BASE AT OVERHANG
SINGLE SKIN

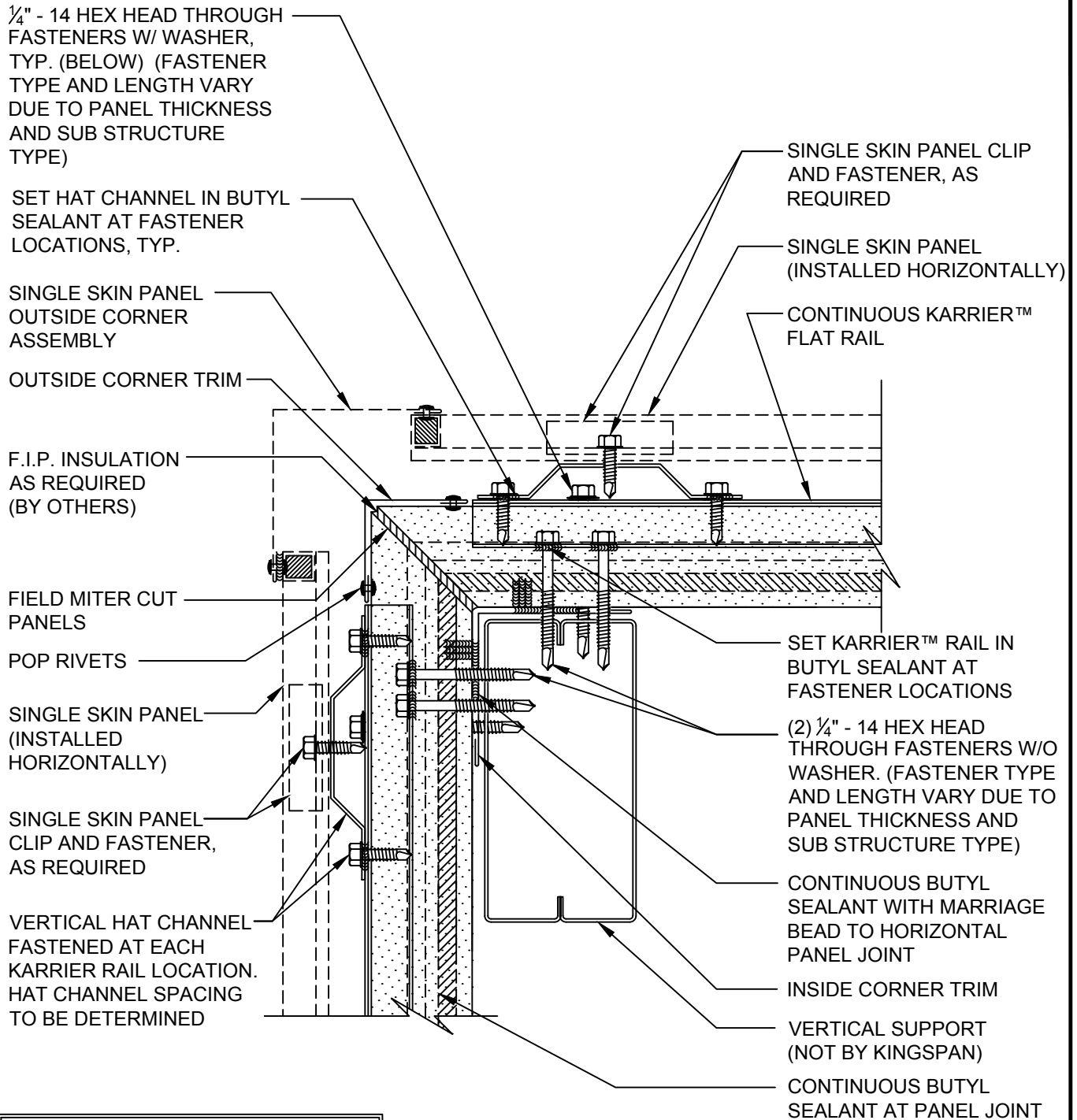
DETAIL #: FRKPH-BS-05-MTLV

DATE: 2019


Kingspan
Insulated Panels

www.kingspanpanels.us
www.kingspanpanels.ca

HORIZONTAL KARRIER™ PANEL - FLAT RAIL - METAL FACADE



NOTE:
FOR PROJECTS REQUIRING NFPA 285:
INTERIOR SIDE OF FRAMING MUST
HAVE 5/8" THICK FIRE BLOCK TYPE X
GYPSUM BOARD (NOT BY KINGSPAN)

OUTSIDE CORNER

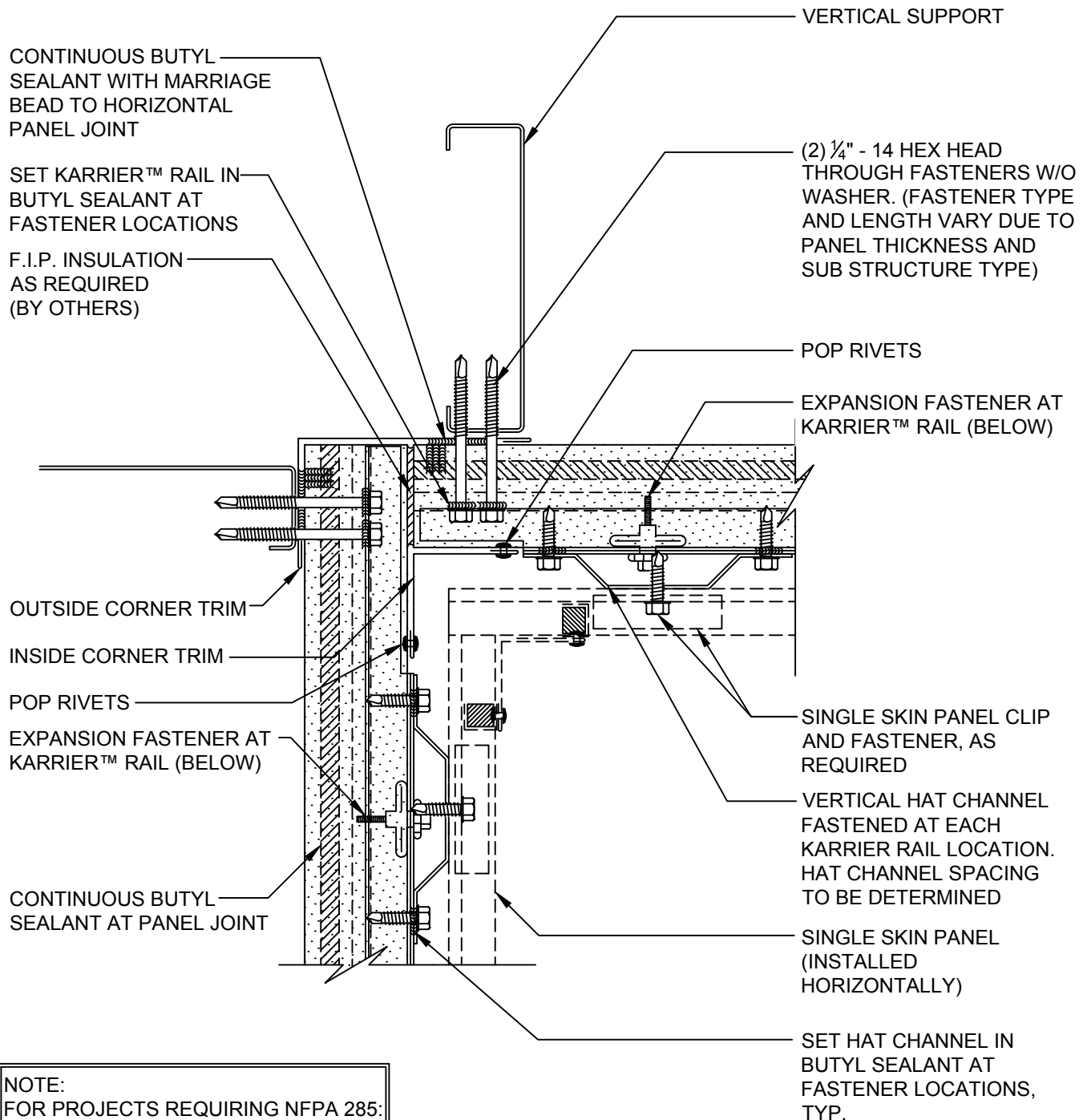
DETAIL #: FRKPH-OC-01-MTLV

DATE: 2019



www.kingspanpanels.us
www.kingspanpanels.ca

HORIZONTAL KARRIER™ PANEL - FLAT RAIL - METAL FACADE



NOTE:
FOR PROJECTS REQUIRING NFPA 285:
INTERIOR SIDE OF FRAMING MUST
HAVE 5/8" THICK FIRE BLOCK TYPE X
GYPSUM BOARD (NOT BY KINGSPAN)

INSIDE CORNER

DETAIL #: FRKPH-IC-01-MTLV

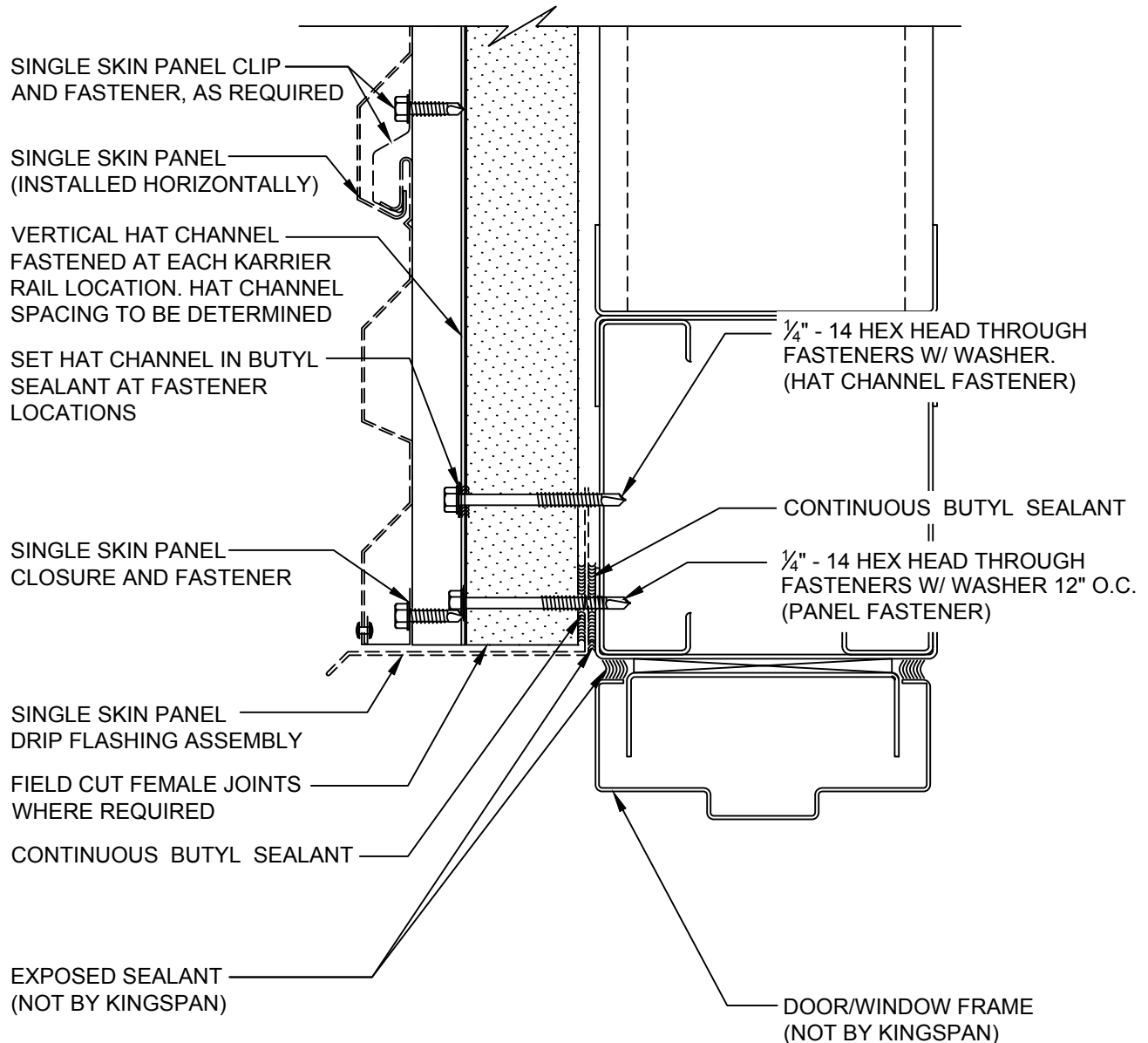
DATE: 2019



www.kingspanpanels.us
www.kingspanpanels.ca

HORIZONTAL KARRIER™ PANEL - FLAT RAIL - METAL FACADE

NOTE:
FOR PROJECTS REQUIRING NFPA 285:
INTERIOR SIDE OF FRAMING MUST
HAVE 5/8" THICK FIRE BLOCK TYPE X
GYPSUM BOARD (NOT BY KINGSPAN)



FRAMED OPENING
HEAD

DETAIL #: FRKPH-FO-01-MTLV

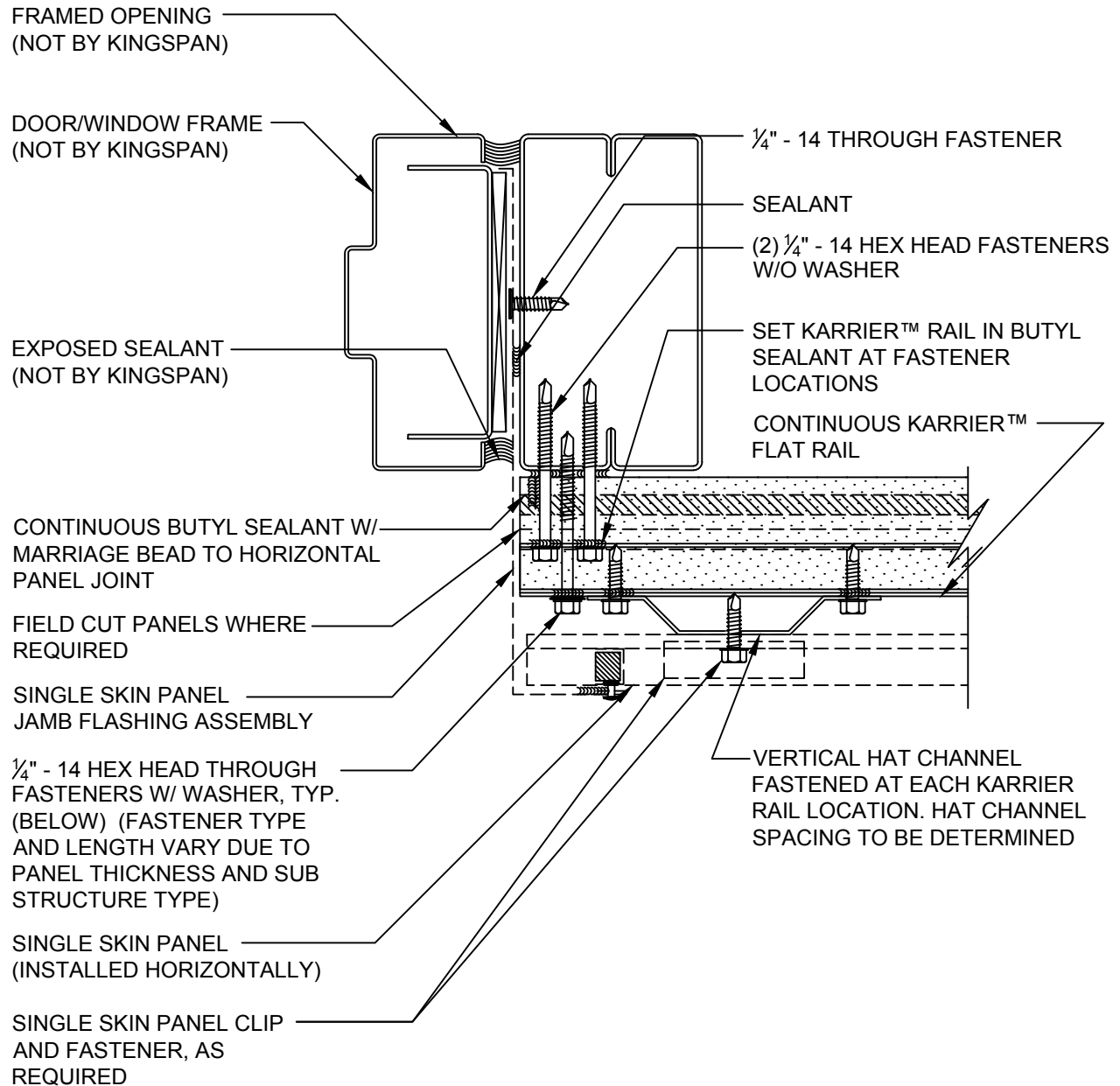
DATE: 2019



www.kingspanpanels.us
www.kingspanpanels.ca

HORIZONTAL KARRIER™ PANEL - FLAT RAIL - METAL FACADE

NOTE:
FOR PROJECTS REQUIRING NFPA 285:
INTERIOR SIDE OF FRAMING MUST
HAVE $\frac{5}{8}$ " THICK FIRE BLOCK TYPE X
GYPSUM BOARD (NOT BY KINGSPAN)



FRAMED OPENING
JAMB

DETAIL #: FRKPH-FO-02-MTLV

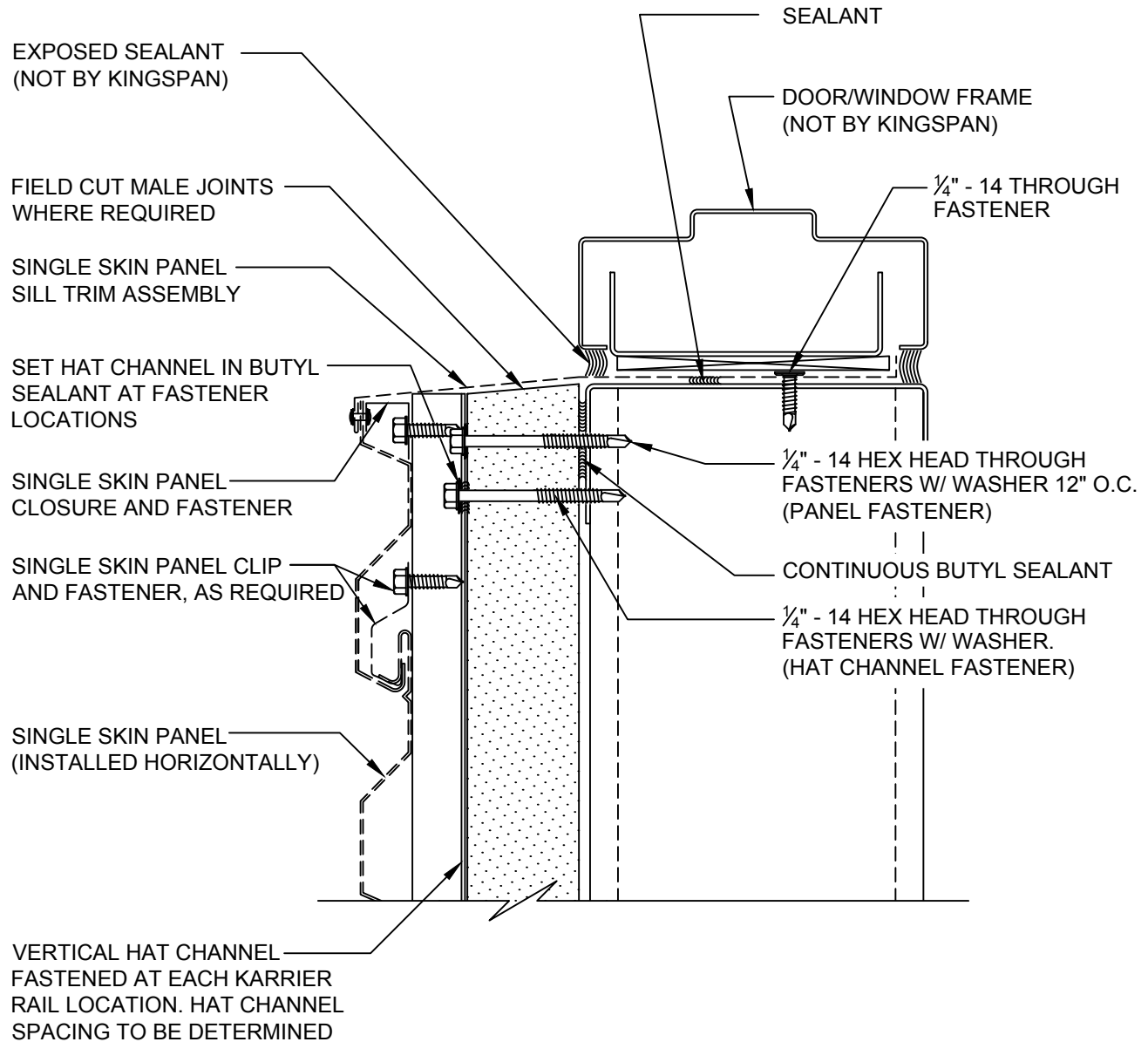
DATE: 2019


Kingspan
Insulated Panels

www.kingspanpanels.us
www.kingspanpanels.ca

HORIZONTAL KARRIER™ PANEL - FLAT RAIL - METAL FACADE

NOTE:
FOR PROJECTS REQUIRING NFPA 285:
INTERIOR SIDE OF FRAMING MUST
HAVE $\frac{5}{8}$ " THICK FIRE BLOCK TYPE X
GYPSUM BOARD (NOT BY KINGSPAN)



FRAMED OPENING SILL

DETAIL #: FRKPH-FO-04-MTLV

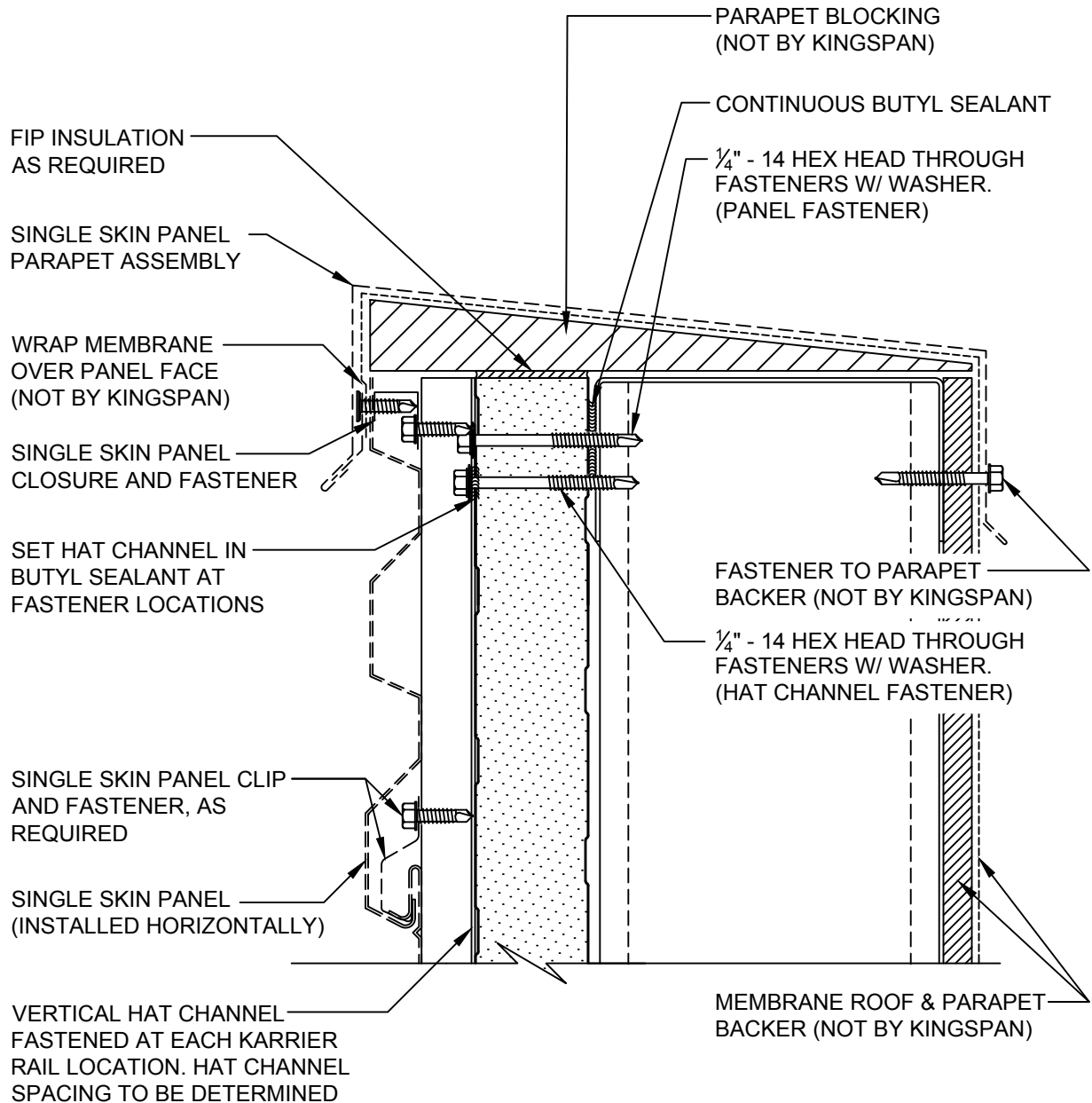
DATE: 2019



www.kingspanpanels.us
www.kingspanpanels.ca

HORIZONTAL KARRIER™ PANEL - FLAT RAIL - METAL FACADE

NOTE:
FOR PROJECTS REQUIRING NFPA 285:
INTERIOR SIDE OF FRAMING MUST
HAVE $\frac{5}{8}$ " THICK FIRE BLOCK TYPE X
GYPSUM BOARD (NOT BY KINGSPAN)



PARAPET DETAIL

DETAIL #: FRKPH-PR-01-MTLV

DATE: 2019



www.kingspanpanels.us
www.kingspanpanels.ca

HORIZONTAL KARRIER™ PANEL - FLAT RAIL - METAL FACADE

NOTE:
FOR PROJECTS REQUIRING NFPA 285:
INTERIOR SIDE OF FRAMING MUST
HAVE $\frac{5}{8}$ " THICK FIRE BLOCK TYPE X
GYPSUM BOARD (NOT BY KINGSPAN)

REFER TO 900/1000 SERIES
ROOF PANEL DETAILS FOR
ADDITIONAL INFORMATION

FIP INSULATION
AS REQUIRED

SINGLE SKIN PANEL
CLOSURE AND FASTENER

SET HAT CHANNEL IN
BUTYL SEALANT AT
FASTENER LOCATIONS

SINGLE SKIN PANEL CLIP
AND FASTENER, AS
REQUIRED

SINGLE SKIN PANEL
(INSTALLED HORIZONTALLY)

VERTICAL HAT CHANNEL
FASTENED AT EACH KARRIER
RAIL LOCATION. HAT CHANNEL
SPACING TO BE DETERMINED

$\frac{1}{4}$ " - 14 HEX HEAD THROUGH
FASTENERS W/ WASHER.
(FASTENER TYPE AND
LENGTH VARY DUE TO
PANEL THICKNESS AND
SUB-STRUCTURE TYPE)

CONTINUOUS BUTYL SEALANT

EAVE STRUT
(NOT BY KINGSPAN)

LOW EAVE DETAIL

DETAIL #: FRKPH-LE-01-MTLV

DATE: 2019



www.kingspanpanels.us
www.kingspanpanels.ca

HORIZONTAL KARRIER™ PANEL - FLAT RAIL - METAL FACADE

NOTE:
FOR PROJECTS REQUIRING NFPA 285:
INTERIOR SIDE OF FRAMING MUST
HAVE $\frac{5}{8}$ " THICK FIRE BLOCK TYPE X
GYPSUM BOARD (NOT BY KINGSPAN)

REFER TO 900/1000 SERIES
ROOF PANEL DETAILS FOR
ADDITIONAL INFORMATION

RAKE ANGLE
(NOT BY KINGSPAN)

FIP INSULATION
AS REQUIRED

SINGLE SKIN PANEL
CLOSURE AND FASTENER

SET HAT CHANNEL IN
BUTYL SEALANT AT
FASTENER LOCATIONS

$\frac{1}{4}$ " - 14 HEX HEAD THROUGH
FASTENERS W/ WASHER.
(FASTENER TYPE AND
LENGTH VARY DUE TO
PANEL THICKNESS AND
SUB-STRUCTURE TYPE)

CONTINUOUS BUTYL SEALANT

SINGLE SKIN PANEL CLIP
AND FASTENER, AS
REQUIRED

SINGLE SKIN PANEL
(INSTALLED HORIZONTALLY)

VERTICAL HAT CHANNEL
FASTENED AT EACH KARRIER
RAIL LOCATION. HAT CHANNEL
SPACING TO BE DETERMINED

RAKE DETAIL

DETAIL #: FRKPH-RD-01-MTLV

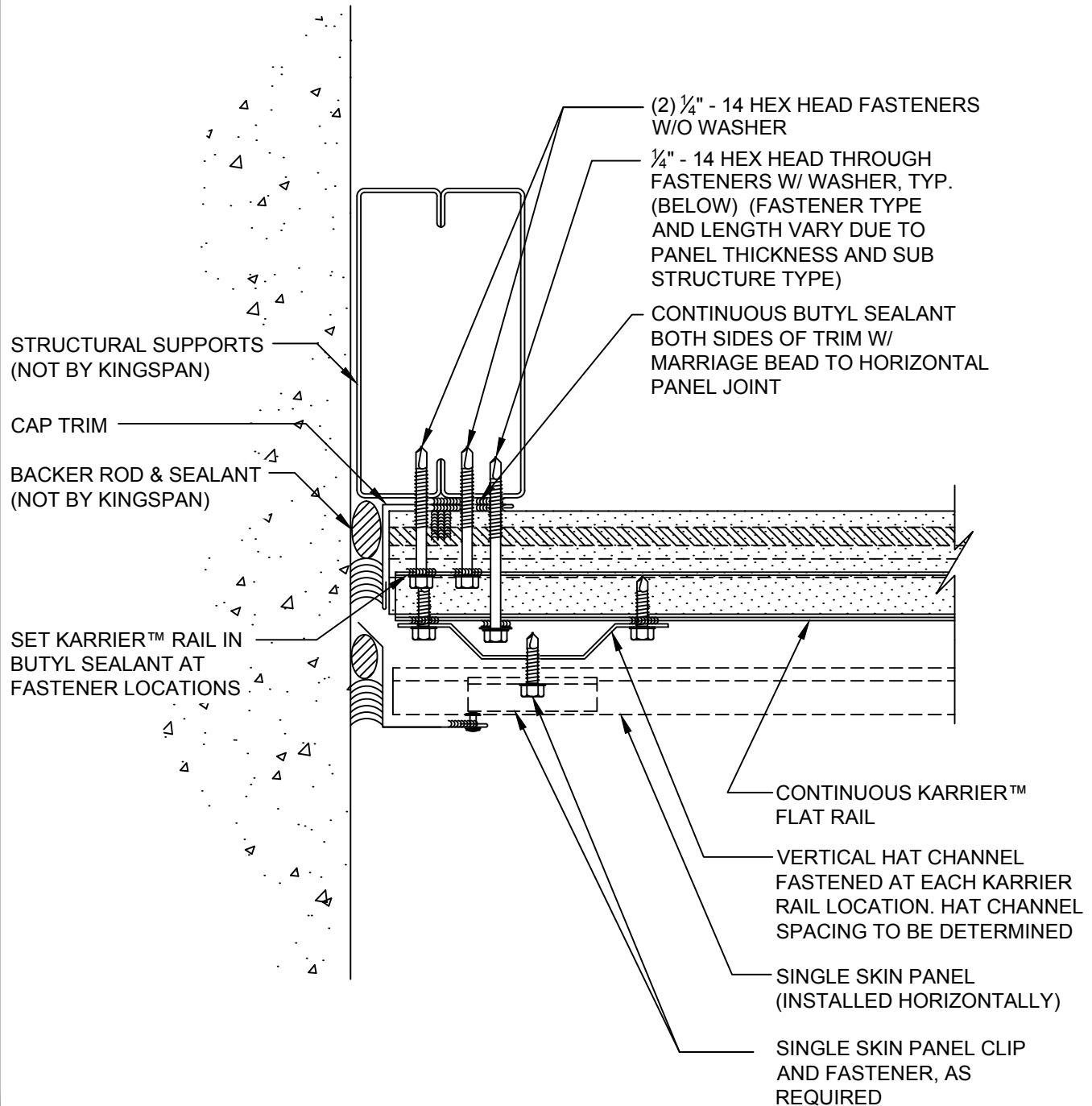
DATE: 2019


Kingspan
Insulated Panels

www.kingspanpanels.us
www.kingspanpanels.ca

HORIZONTAL KARRIER™ PANEL - FLAT RAIL - METAL FACADE

NOTE:
FOR PROJECTS REQUIRING NFPA 285:
INTERIOR SIDE OF FRAMING MUST
HAVE 5/8" THICK FIRE BLOCK TYPE X
GYPSUM BOARD (NOT BY KINGSPAN)



PANEL TERMINATION

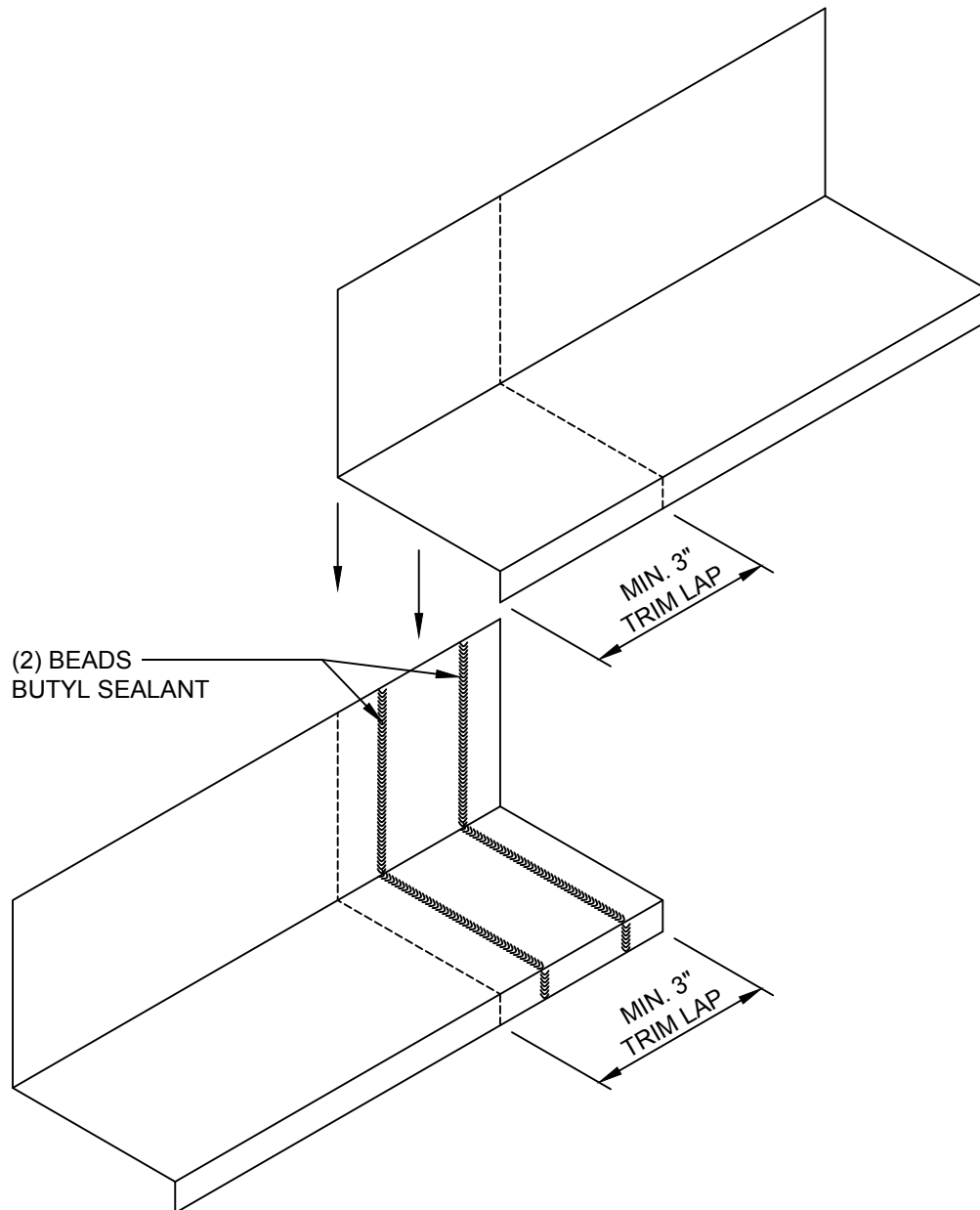
DETAIL #: FRKPH-TP-01-MTLV

DATE: 2019



www.kingspanpanels.us
www.kingspanpanels.ca

HORIZONTAL KARRIER™ PANEL - FLAT RAIL - METAL FACADE



TRIM END LAP

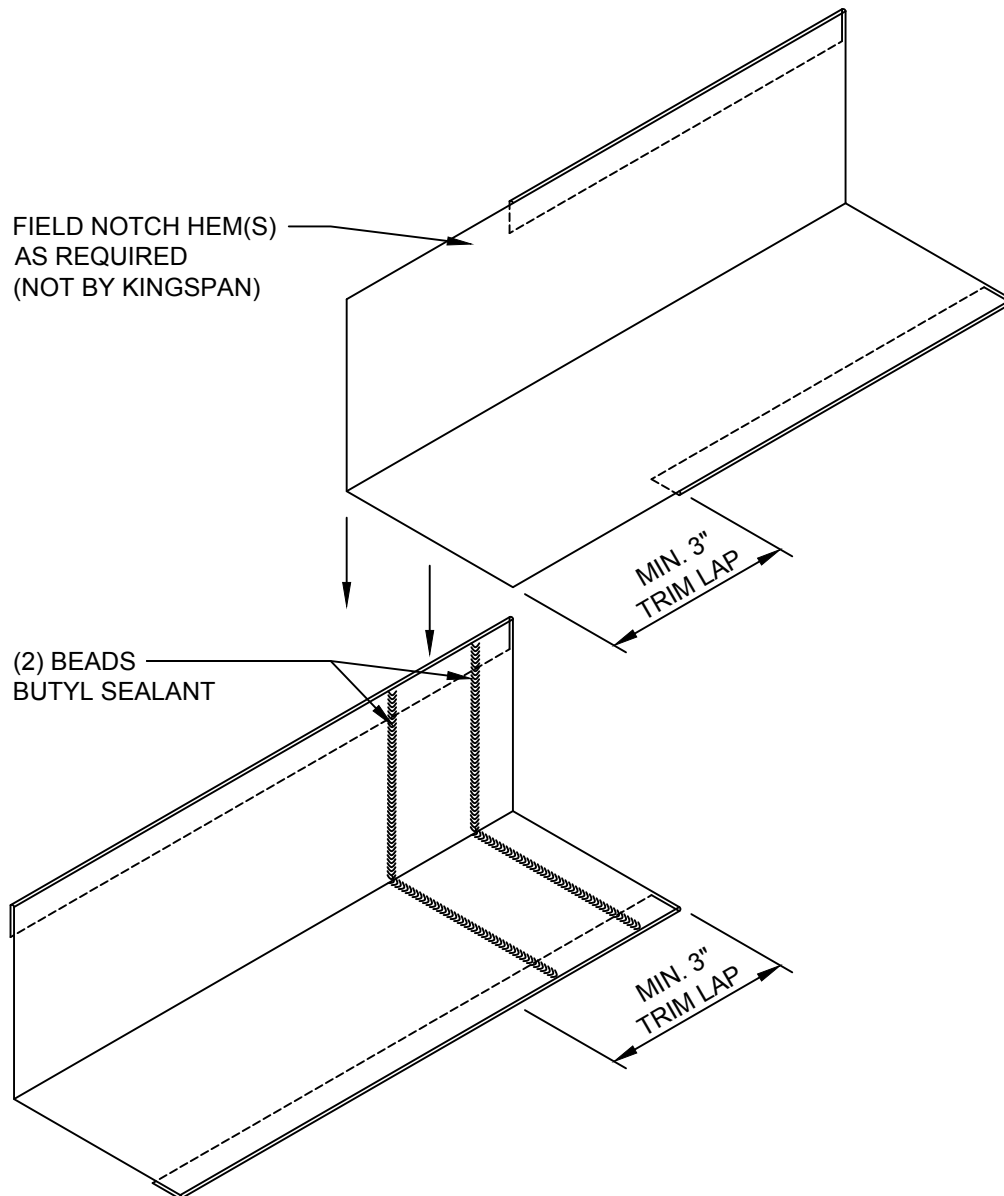
DETAIL #: FRKPH-TL-01-MTLV

DATE: 2019


Kingspan
Insulated Panels

www.kingspanpanels.us
www.kingspanpanels.ca

HORIZONTAL KARRIER™ PANEL - FLAT RAIL - METAL FACADE



TRIM END LAP
WITH HEMS

DETAIL #: FRKPH-TL-02-MTLV

DATE: 2019



www.kingspanpanels.us
www.kingspanpanels.ca