

1 ISOMETRIC
SCALE: 3/4" = 1'-0"

FRAMED HARMONIC CASCADE® SERIES
Small Features - 6' Wide by 10' Tall Maximum Dimensions

- DESIGN CONSIDERATIONS -
- MAXIMUM DIMENSIONS OF A SMALL FEATURE ARE 6 FEET WIDE BY 10 FEET TALL.
 - THE FRAMED CASCADE SERIES FEATURE IS CONSIDERED A SELF-CONTAINED SYSTEM WITH EQUIPMENT LOCATED IN BASIN/OPEN POOL (BY OTHERS) AND PIPING RETROFITTED INSIDE THE FRAME.
 - OPEN POOL (BY OTHERS) MAY BE PROVIDED IN LIEU OF A CLOSED BASIN DESIGN.
 - BASIN/OPEN POOL MAY BE INSTALLED BELOW GRADE, ABOVE GRADE, BUILT INTO SURROUNDING CASEWORK, ETC.
 - UPPER DISTRIBUTION SYSTEM MAY BE CONCEALED BEHIND A SOFFIT, FASCIA, DROP CEILING, ETC.
 - EQUIPMENT SPECS AND PIPE SIZES VARY AND WILL BE DETERMINED PER JOB.

FOR REFERENCE PURPOSES ONLY
NOT FOR CONSTRUCTION USE

Harmonic Environments®
the premier maker of custom waterfalls®

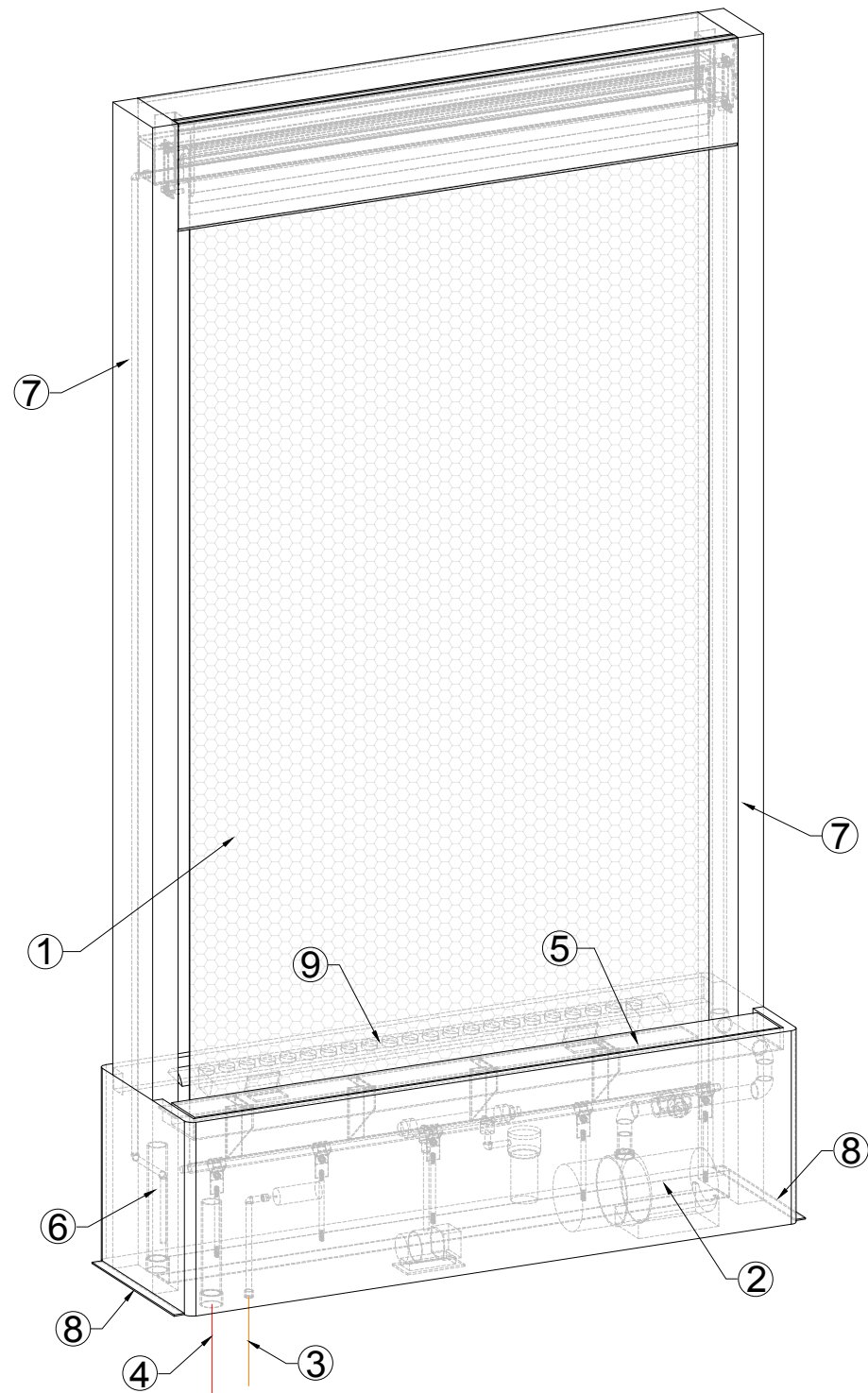
1075 Hialeah Drive
Hialeah, FL 33010 USA
772.223.9011 p 772.382.6431 f

Generic Drawings

Harmonic Cascade® Series
Small Framed and Frameless
Stainless Steel Basin

PROJECT #	N/A
DATE	5/16/17
REVISION #	00
DRAWN BY	JYM
DESIGNED BY	TM
SHEET #	01 OF 13

ALL PLUMBING/ELECTRICAL CONNECTIONS PROVIDED BY OTHERS



1 ISOMETRIC
SCALE: 3/4" = 1'-0"

SHEET NOTES:

1	HARMONIC MESH™
2	MAIN FEATURE PUMP AND WATER SANITATION EQUIPMENT
3	1/2" STANDARD WATER LINE (BY OTHERS); NPT SS FEMALE CONNECTION COUPLING WITH AUTO-FILL FLOAT VALVE BY HARMONIC ENVIRONMENTS
4	1-1/2" DRAIN LINE (BY OTHERS); NPT SS FEMALE CONNECTION COUPLING WITH PVC STANDPIPE OVERFLOW BY HARMONIC ENVIRONMENTS
5	REMOVABLE BASIN LID (IF APPLICABLE)
6	1-1/2" ELECTRICAL CONDUIT; NPT SS FEMALE CONNECTION COUPLING AND CONDUIT PROVIDED BY HARMONIC ENVIRONMENTS
7	FRAME; PLUMBING CONNECTIONS LOCATED INSIDE
8	(2) MOUNTING FLANGE; TO FIX BASIN TO THE FINISHED FLOOR (BY OTHERS); MOUNTING SCREWS PROVIDED BY OTHERS
9	LED LIGHTING FIXTURE (IF APPLICABLE)

FOR REFERENCE PURPOSES ONLY
NOT FOR CONSTRUCTION USE

BREAKDOWN OF LOADS IN LBS	
HARMONIC MESH	TBD
WATERFALL (WITHOUT MESH)	
WITH WATER	TBD
WITHOUT WATER	TBD

BREAKDOWN OF WATER VOLUME IN GALLONS	
UPPER DIST SYS	TBD
HARMONIC MESH	TBD
BASIN	TBD
PIPES	TBD
TOTAL	TBD

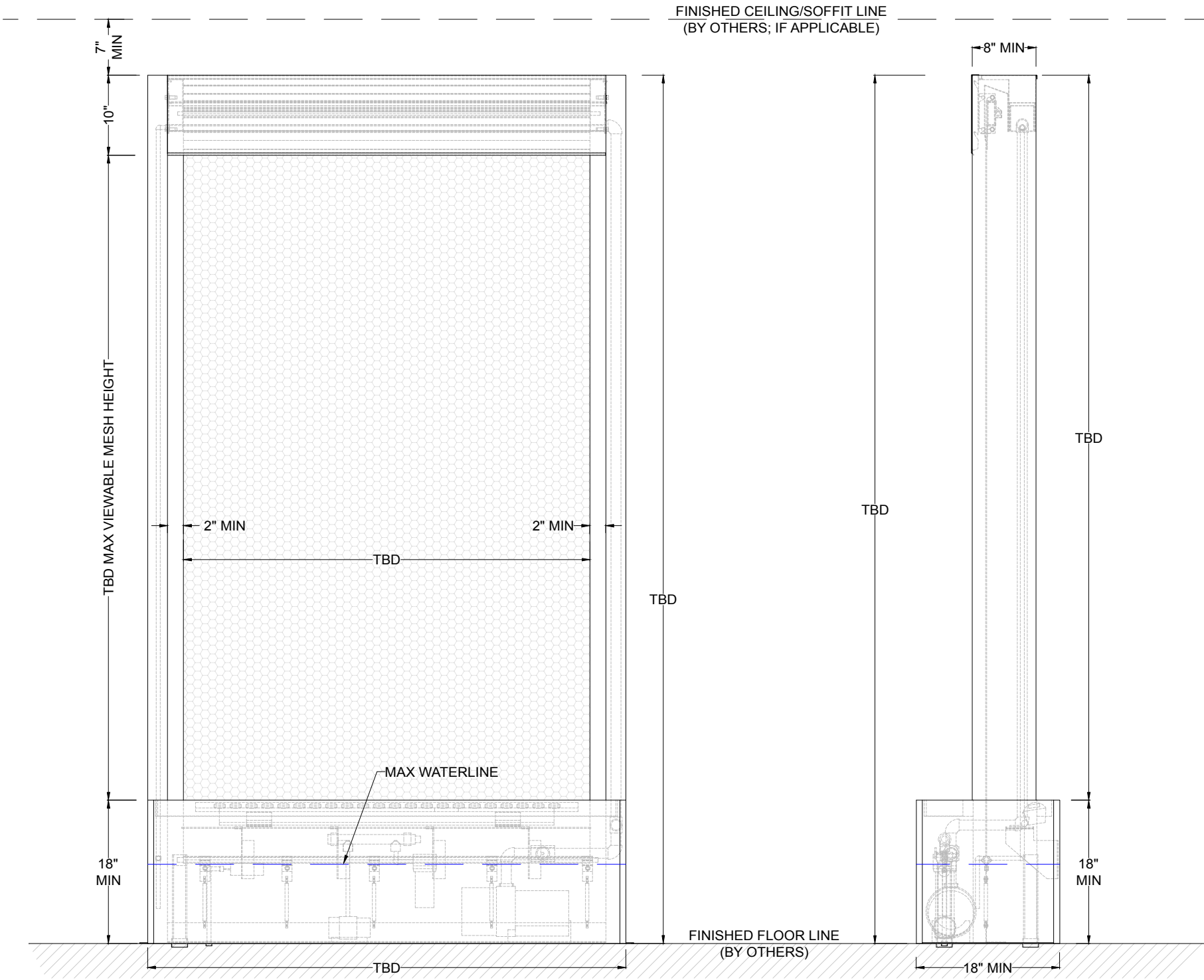
Harmonic Environments®
the premier maker of custom waterfalls®

1075 Hialeah Drive
Hialeah, FL 33010 USA
772.223.9011 p 772.382.6431 f

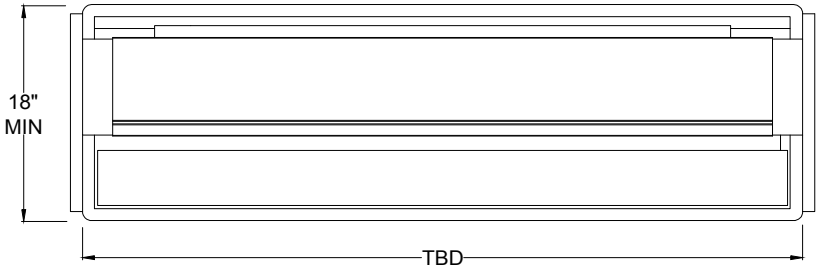
Generic Drawings

Harmonic Cascade® Series
Small Framed and Frameless
Stainless Steel Basin

PROJECT #	N/A
DATE	5/16/17
REVISION #	00
DRAWN BY	JYM
DESIGNED BY	TM
SHEET #	02
OF	13



FOR REFERENCE PURPOSES ONLY
NOT FOR CONSTRUCTION USE



① PLAN AND ELEVATIONS
SCALE: 3/4" = 1'-0"

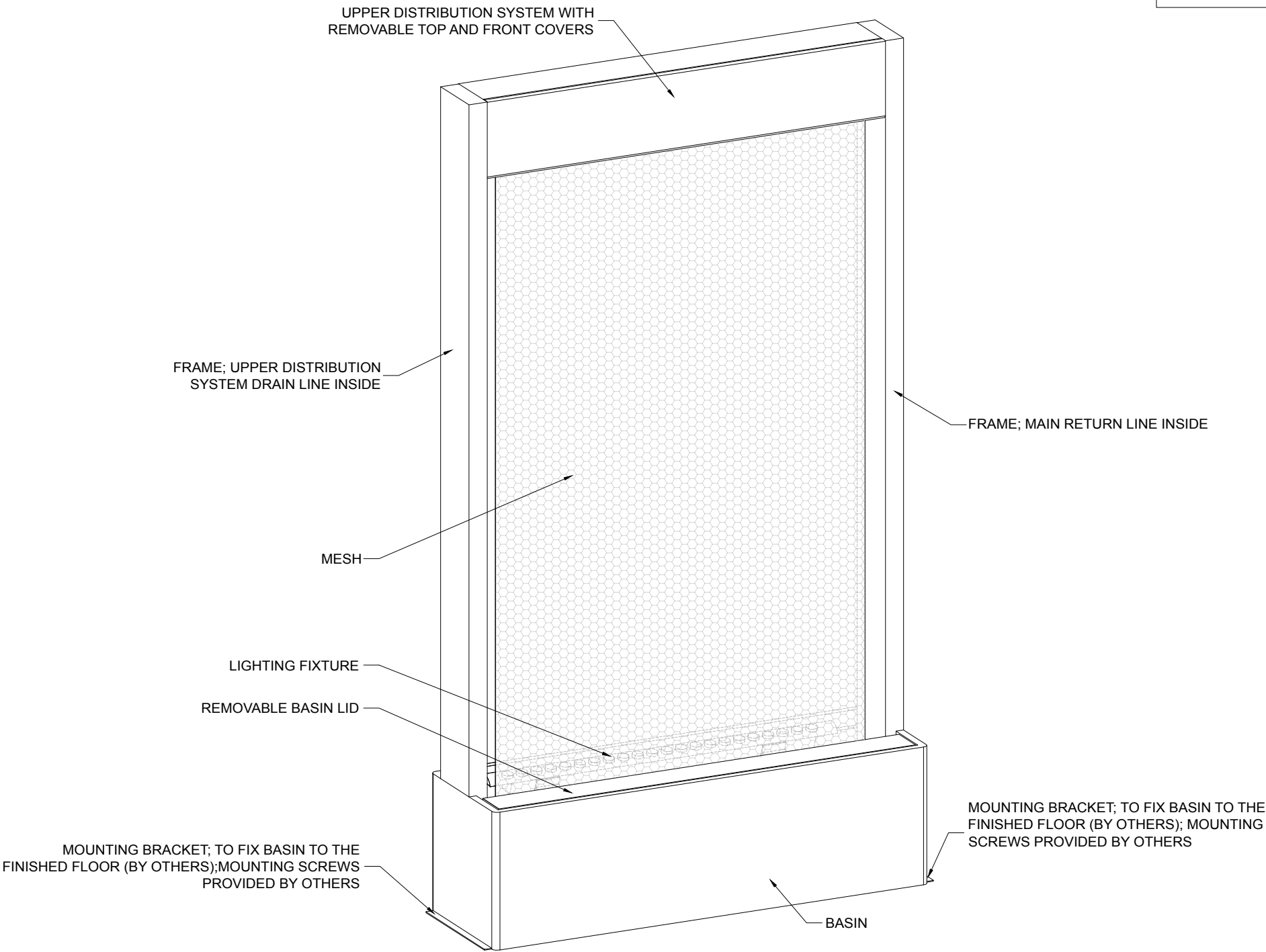
Harmonic Environments®
the premier maker of custom waterfalls®

1075 Hialeah Drive
Hialeah, FL 33010 USA
772.223.9011 p 772.382.6431 f

Generic Drawings

Harmonic Cascade® Series
Small Framed and Frameless
Stainless Steel Basin

PROJECT #	N/A
DATE	5/16/17
REVISION #	00
DRAWN BY	JYM
DESIGNED BY	TM
SHEET #	03 OF 13



FOR REFERENCE PURPOSES ONLY
NOT FOR CONSTRUCTION USE

① ISOMETRIC
SCALE: 3/4" = 1'-0"

Harmonic Environments®
the premier maker of custom waterfalls®

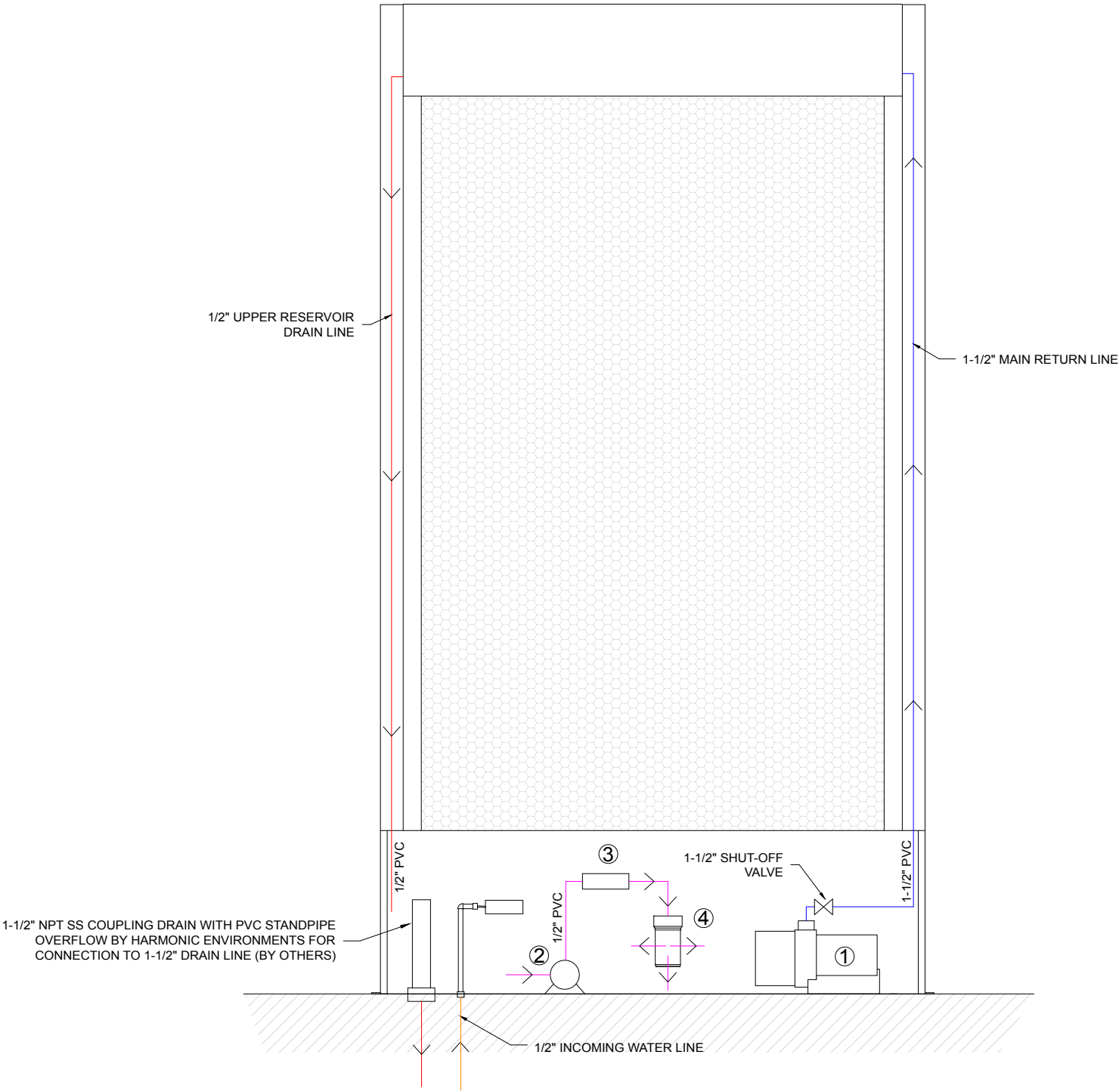
1075 Hialeah Drive
Hialeah, FL 33010 USA
772.223.9011 p 772.382.6431 f

Generic Drawings

Harmonic Cascade® Series
Small Framed and Frameless
Stainless Steel Basin

PROJECT #	N/A
DATE	5/16/17
REVISION #	00
DRAWN BY	JYM
DESIGNED BY	TM
SHEET #	04 OF 13

ALL PLUMBING/ELECTRICAL CONNECTIONS PROVIDED BY OTHERS



1 PLUMBING SCHEMATIC
SCALE: 3/4" = 1'-0"

SHEET NOTES:

1	MAIN SUBMERSIBLE PUMP Product Number: TBD Design Flow Rate: TBD	Specs: 120V,1Ph,10A,50/60Hz
2	SUBMERSIBLE UTILITY PUMP Product Number: TBD Design Flow Rate: TBD	Specs: 115V,1.6A,50/60Hz
3	UV STERILIZER Product Number: TBD	Specs: 120V,0.5A,50/60Hz
4	BROMINE REACTOR Product Number: TBD	

FOR REFERENCE PURPOSES ONLY
NOT FOR CONSTRUCTION USE

Harmonic Environments®
the premier maker of custom waterfalls®

1075 Hialeah Drive
Hialeah, FL 33010 USA
772.223.9011 p 772.382.6431 f

Generic Drawings

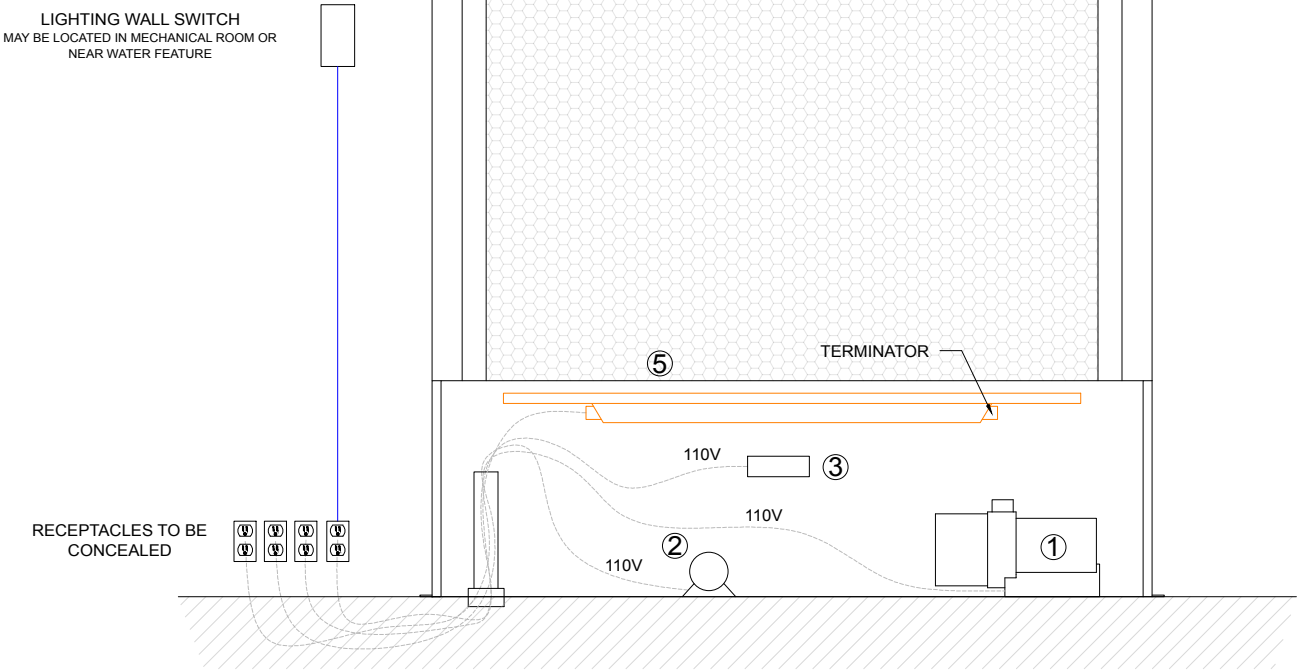
Harmonic Cascade® Series
Small Framed and Frameless
Stainless Steel Basin

PROJECT #	N/A
DATE	5/16/17
REVISION #	00
DRAWN BY	JYM
DESIGNED BY	TM
SHEET #	05 OF 13

SHEET NOTES:

NUMBERS CORRESPOND WITH PLUMBING DIAGRAM

CIRCUIT 1 - 120V,15A circuit,50/60Hz (EXAMPLE; MAY VARY)		
1	MAIN SUBMERSIBLE PUMP Product Number: TBD Design Flow Rate: 2600 gallons	Specs: 120V,1Ph,10A,50/60Hz
CIRCUIT 2 - 120V,15A circuit,50/60Hz (EXAMPLE; MAY VARY)		
2	SUBMERSIBLE UTILITY PUMP Product Number: TBD Design Flow Rate: 700 GPH	Specs: 115V,1.6A,50/60Hz
3	UV STERILIZER Product Number:TBD	Specs: 120V,0.5A,50/60Hz
5	LIGHTING FIXTURE Product Number: TBD Electrical Consumption: 60w total	Power: 120V,1.5A,50/60Hz Beam Angle: 10° x 60°

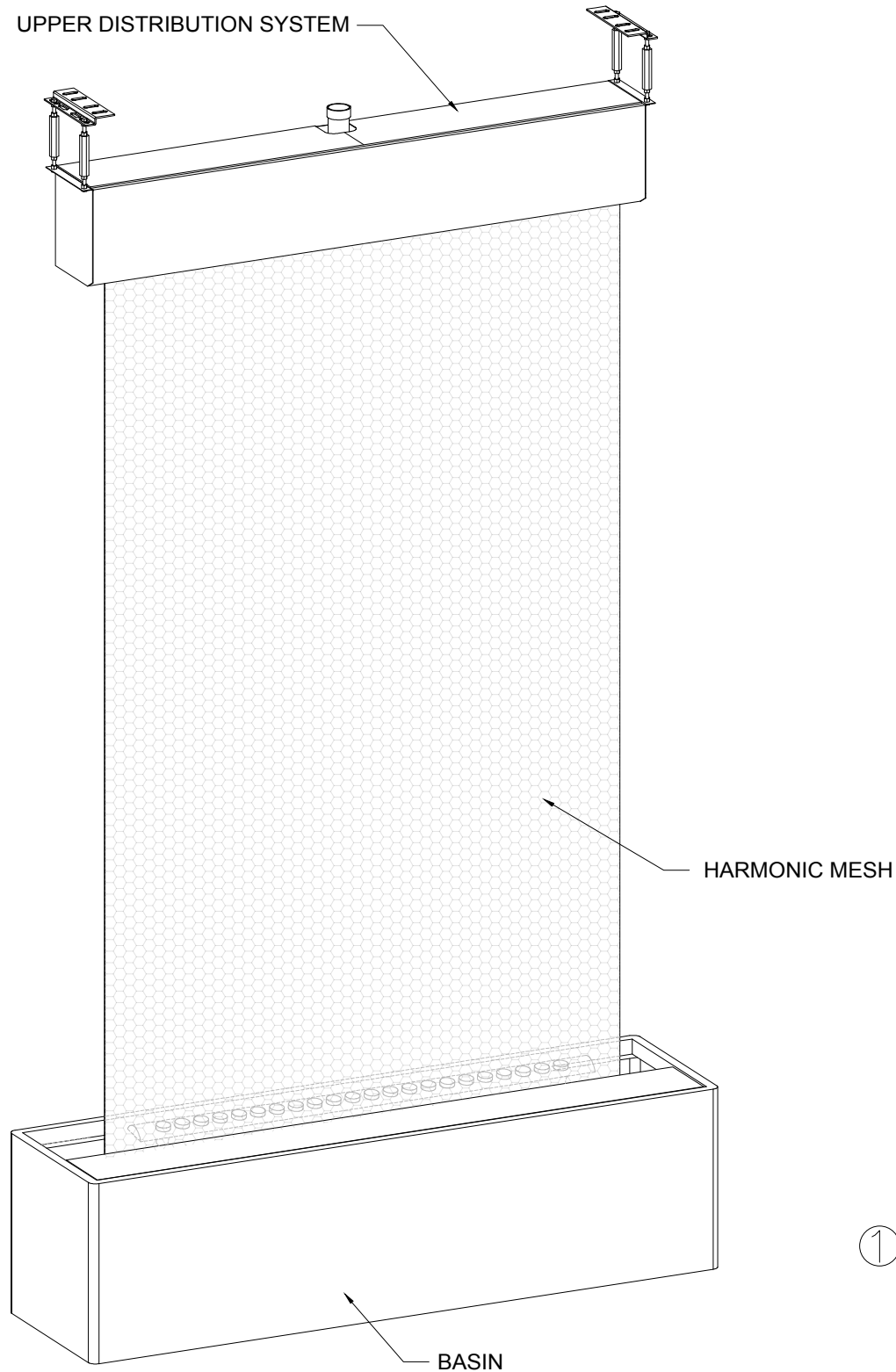


1 ELECTRICAL SCHEMATIC
SCALE: 3/4" = 1'-0"

FOR REFERENCE PURPOSES ONLY
NOT FOR CONSTRUCTION USE

ALL PLUMBING/ELECTRICAL CONNECTIONS PROVIDED BY OTHERS

PROJECT #	N/A	
	DATE	5/16/17
	REVISION #	00
	DRAWN BY	JYM
	DESIGNED BY	TM
SHEET # 06		OF 13
Generic Drawings		Harmonic Cascade® Series Small Framed and Frameless Stainless Steel Basin
Harmonic Environments® the premier maker of custom waterfalls® 1075 Hialeah Drive Hialeah, FL 33010 USA 772.223.9011 p 772.382.6431 f		



FRAMELESS HARMONIC CASCADE® SERIES

Small Features - 6' Wide by 10' Tall Maximum Dimensions

DESIGN CONSIDERATIONS -

- A SMALL FEATURE IS DEFINED WITH MAXIMUM DIMENSIONS OF 6 FEET WIDE BY 10 FEET TALL.
- THE SMALL FRAMELESS CASCADE SERIES FEATURE IS CONSIDERED A SELF-CONTAINED SYSTEM WITH EQUIPMENT LOCATED IN BASIN/OPEN POOL (BY OTHERS).
- OPEN POOL (BY OTHERS) MAY BE PROVIDED IN LIEU OF A CLOSED BASIN DESIGN.
- BASIN/OPEN POOL MAY BE INSTALLED BELOW GRADE, ABOVE GRADE, BUILT INTO SURROUNDING CASEWORK, ETC.
- UPPER DISTRIBUTION SYSTEM MAY BE CONCEALED BEHIND A SOFFIT, FASCIA, DROP CEILING, ETC.
- EQUIPMENT SPECS AND PIPE SIZES VARY AND WILL BE DETERMINED PER JOB.

FOR REFERENCE PURPOSES ONLY
NOT FOR CONSTRUCTION USE

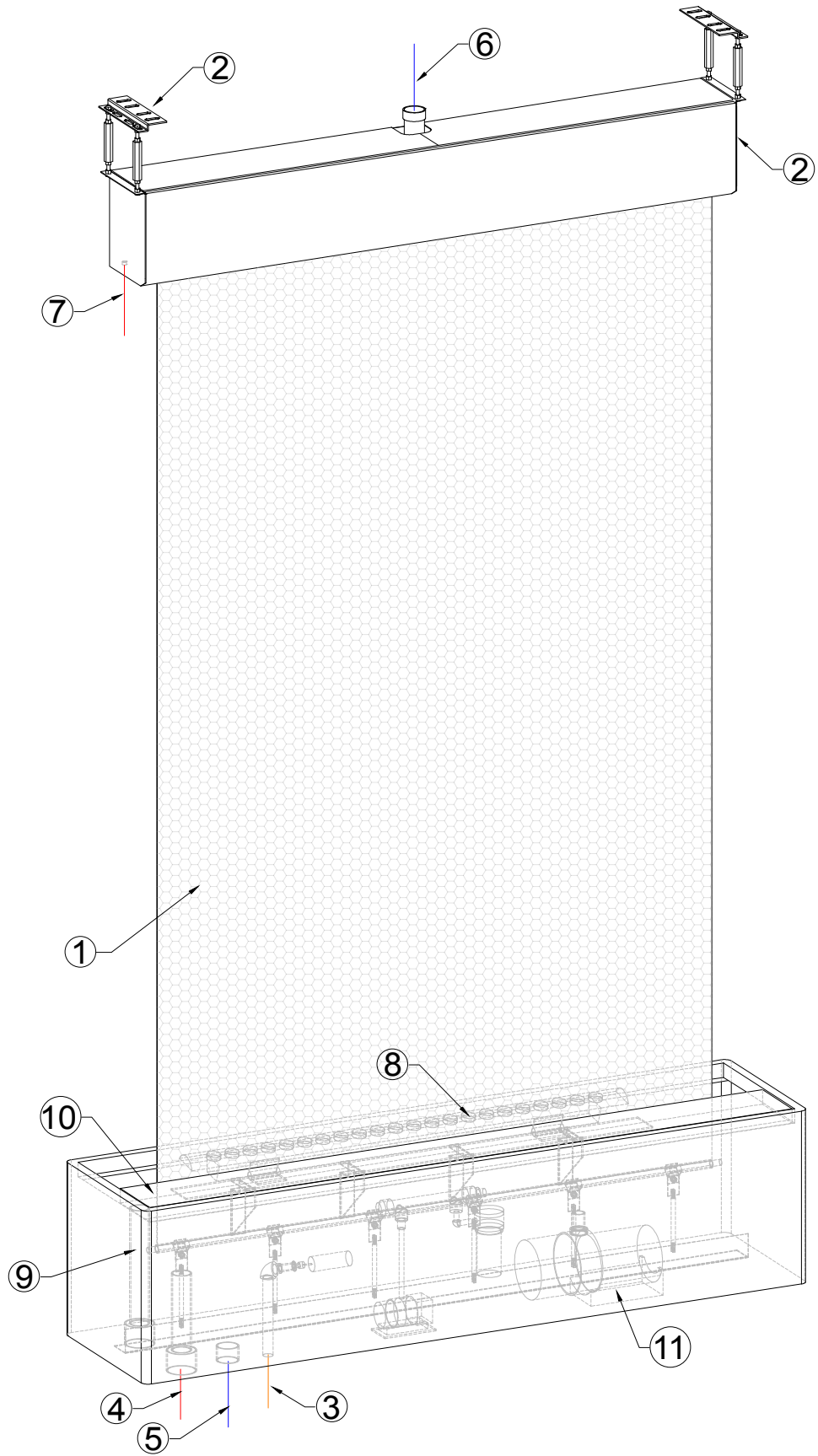
Harmonic Environments®
the premier maker of custom waterfalls®

1075 Hialeah Drive
Hialeah, FL 33010 USA
772.223.9011 p 772.382.6431 f

Generic Drawings

Harmonic Cascade® Series
Small Framed and Frameless
Stainless Steel Basin

PROJECT #	N/A
DATE	5/16/17
REVISION #	00
DRAWN BY	JYM
DESIGNED BY	TM
SHEET #	07
OF	13



1 ISOMETRIC
SCALE: 3/4" = 1'-0"

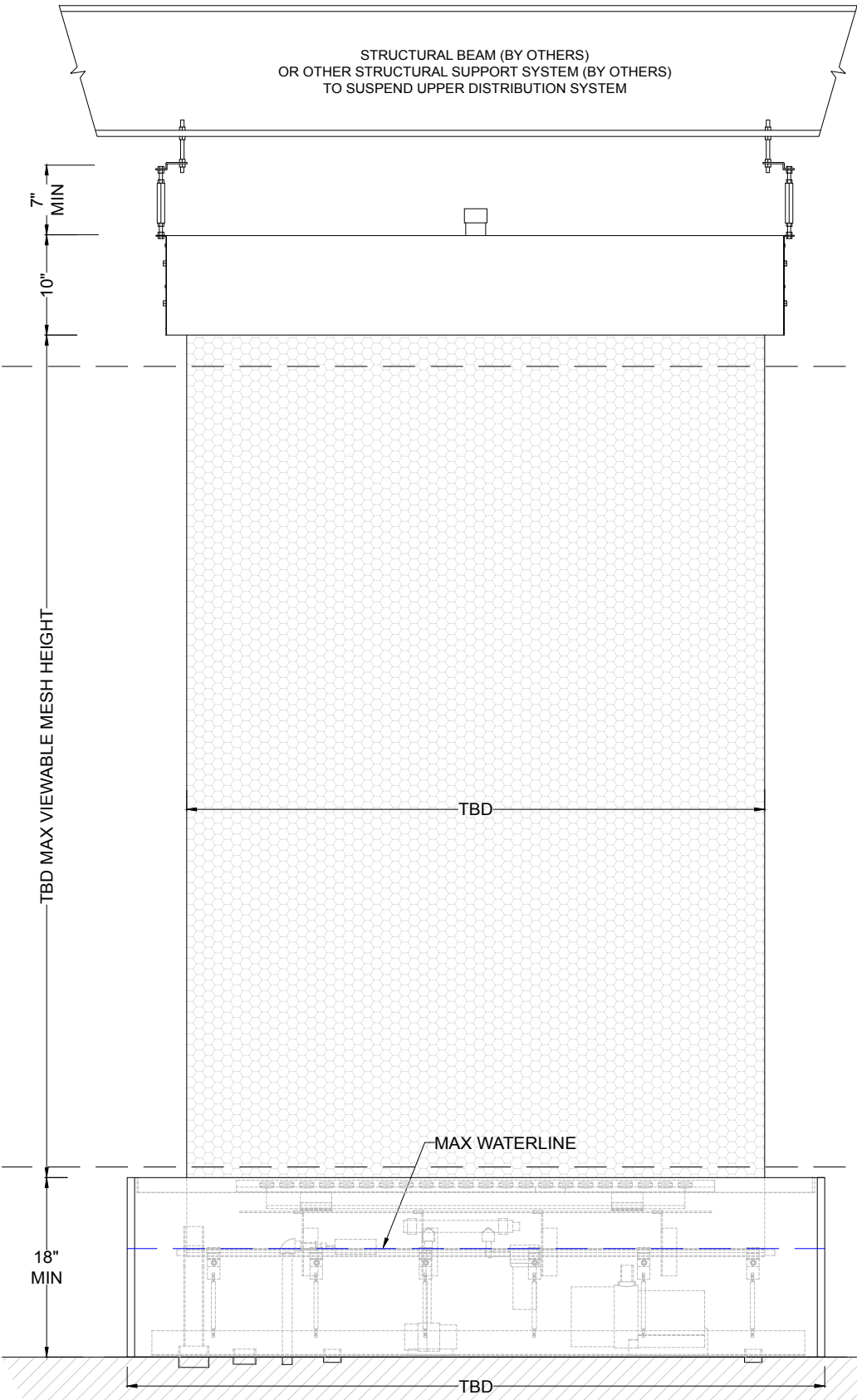
SHEET NOTES:

1	HARMONIC MESH™
2	(2) MOUNTING AND LEVELING BRACKETS; TO SUSPEND UPPER DISTRIBUTION SYSTEM FROM STRUCTURAL SYSTEM (BY OTHERS)
3	1/2" STANDARD WATER LINE (BY OTHERS); NPT SS FEMALE CONNECTION COUPLING WITH AUTO-FILL FLOAT VALVE BY HARMONIC ENVIRONMENTS
4	1-1/2" DRAIN LINE (BY OTHERS); NPT SS FEMALE CONNECTION COUPLING WITH PVC STANDPIPE OVERFLOW BY HARMONIC ENVIRONMENTS
5	2" MAIN SUCTION LINE (BY OTHERS)
6	2" MAIN RETURN LINE (BY OTHERS)
7	1/2" UPPER DISTRIBUTION DRAIN LINE (BY OTHERS)
8	LED LIGHTING FIXTURE (IF APPLICABLE)
9	1-1/2" ELECTRICAL CONDUIT; NPT SS FEMALE CONNECTION COUPLING AND CONDUIT PROVIDED BY HARMONIC ENVIRONMENTS
10	REMOVABLE BASIN LID (IF APPLICABLE)
11	MAIN FEATURE PUMP AND WATER SANITATION EQUIPMENT

FOR REFERENCE PURPOSES ONLY
NOT FOR CONSTRUCTION USE

BREAKDOWN OF LOADS IN LBS	
HARMONIC MESH	TBD
WATERFALL (WITHOUT MESH)	
WITH WATER	TBD
WITHOUT WATER	TBD

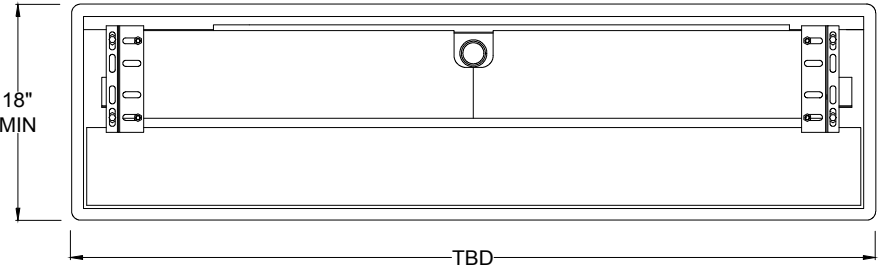
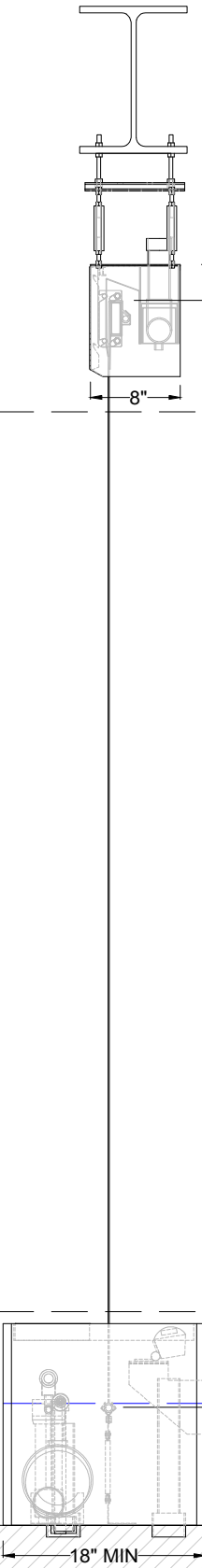
BREAKDOWN OF WATER VOLUME IN GALLONS	
UPPER DIST SYS	TBD
HARMONIC MESH	TBD
BASIN	TBD
PIPES	TBD
TOTAL	TBD



FINISHED CEILING/SOFFIT LINE
(BY OTHERS; IF APPLICABLE)

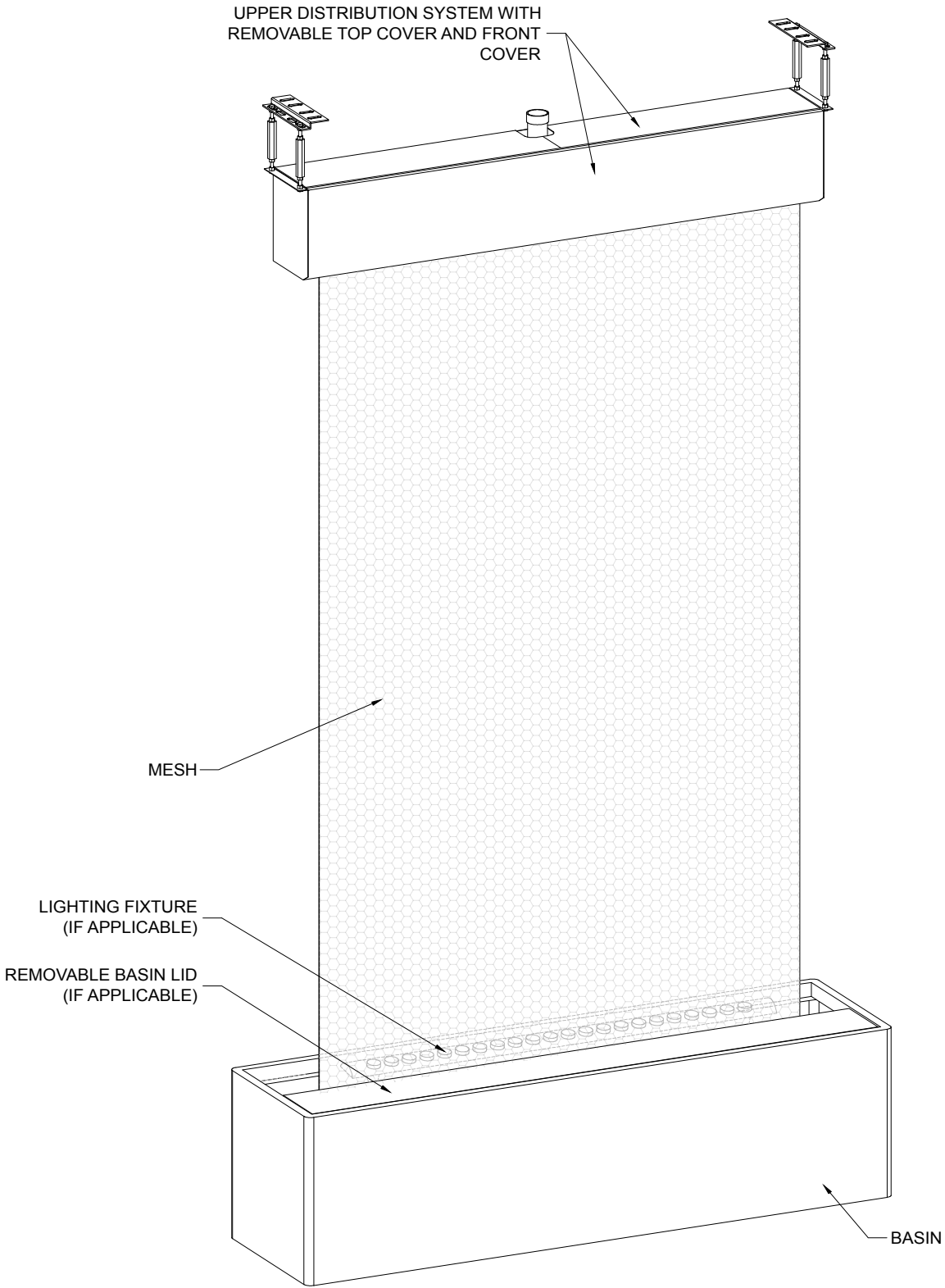
BASIN SURROUND
(BY OTHERS; IF APPLICABLE)

FINISHED FLOOR LINE
(BY OTHERS)



FOR REFERENCE PURPOSES ONLY
NOT FOR CONSTRUCTION USE

① PLAN AND ELEVATIONS
SCALE: 3/4" = 1'-0"



FOR REFERENCE PURPOSES ONLY
NOT FOR CONSTRUCTION USE

① ISOMETRIC
SCALE: 3/4" = 1'-0"

Harmonic Environments®
the premier maker of custom waterfalls®

1075 Hialeah Drive
Hialeah, FL 33010 USA
772.223.9011 p 772.382.6431 f

Generic Drawings

Harmonic Cascade® Series
Small Framed and Frameless
Stainless Steel Basin

PROJECT #	N/A
DATE	5/16/17
REVISION #	00
DRAWN BY	JYM
DESIGNED BY	TM
SHEET #	10 OF 13



1	MAIN SUBMERSIBLE PUMP Product Number: TBD Design Flow Rate: TBD	Specs: 120V,1Ph,10A,50/60Hz
2	SUBMERSIBLE UTILITY PUMP Product Number: TBD Design Flow Rate: TBD	Specs: 115V,1.6A,50/60Hz
3	UV STERILIZER Product Number: TBD	Specs: 120V,0.5A,50/60Hz
4	BROMINE REACTOR Product Number: TBD	

Harmonic Environments®
the premier maker of custom waterfalls®

**1075 Hialeah Drive
Hialeah, FL 33010 USA
772.223.9011 p 772.382.6431 f**

Generic Drawings

Harmonic Cascade® Series Small Framed and Frameless Stainless Steel Basin

PROJECT #	N/A
-----------	-----

DATE	5/16/17
------	---------

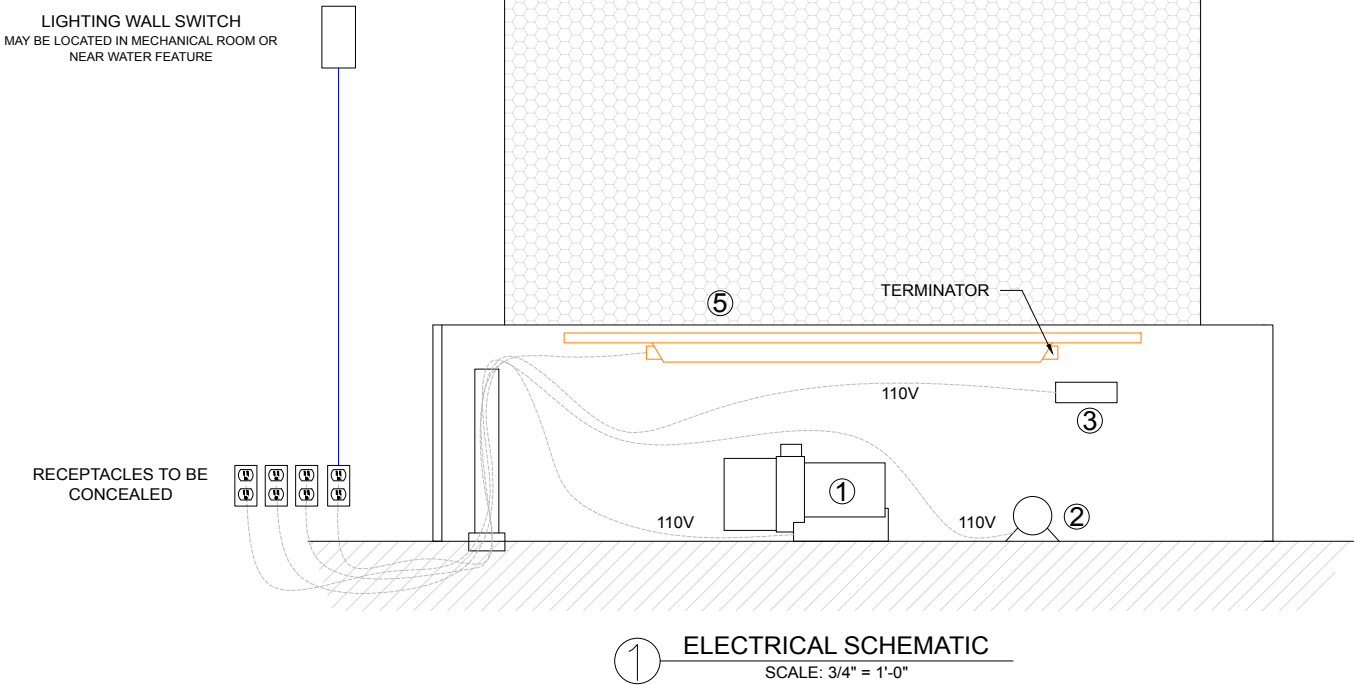
REVISION #	00
------------	----

DRAWN BY	JYM
----------	-----

DESIGNED BY	TM
-------------	----

SHEET # 11 OF 13

SHEET NOTES:	
NUMBERS CORRESPOND WITH PLUMBING DIAGRAM	
CIRCUIT 1 - 120V,15A circuit,50/60Hz (EXAMPLE; MAY VARY)	
1	MAIN SUBMERSIBLE PUMP Product Number: TBD Design Flow Rate: 2600 gallons Specs: 120V,1Ph,10A,50/60Hz
CIRCUIT 2 - 120V,15A circuit,50/60Hz (EXAMPLE; MAY VARY)	
2	SUBMERSIBLE UTILITY PUMP Product Number: TBD Design Flow Rate: 700 GPH Specs: 115V,1.6A,50/60Hz
3	UV STERILIZER Product Number:TBD Specs: 120V,0.5A,50/60Hz
5	LIGHTING FIXTURES Product Number: TBD Electrical Consumption: TBD Power: 120V,1.5A,50/60Hz Beam Angle: 10° x 60°



FOR REFERENCE PURPOSES ONLY
NOT FOR CONSTRUCTION USE

ALL PLUMBING/ELECTRICAL CONNECTIONS PROVIDED BY OTHERS

PROJECT #	N/A
	DATE
	REVISION #
	DRAWN BY
	DESIGNED BY
SHEET # 12 OF 13	
Generic Drawings	
Harmonic Cascade® Series Small Framed and Frameless Stainless Steel Basin	
Harmonic Environments® the premier maker of custom waterfalls® 1075 Hialeah Drive Hialeah, FL 33010 USA 772.223.9011 p 772.382.6431 f	

GENERAL NOTES

OWNER/GENERAL CONTRACTOR TO PROVIDE THE FOLLOWING:

1. MANPOWER AND EQUIPMENT REQUIRED TO UNLOAD THE CRATED PRODUCTS DELIVERED TO THE JOB AND PERFORM INSTALLATION. HARMONIC ENVIRONMENTS WILL PERFORM INSTALLATION CONSULTATION ONLY.
2. PLUMBING CONNECTIONS TO MINIMIZE CLEANING AND MAINTENANCE.

a. STANDARD 1/2" WATER LINE (BY OTHERS); NPT SS FEMALE CONNECTION COUPLING WITH AUTO-FILL FLOAT VALVE BY HARMONIC ENVIRONMENTS.

b. 1-1/2" DRAIN LINE (BY OTHERS); NPT SS FEMALE CONNECTION COUPLING WITH STANDPIPE OVERFLOW BY HARMONIC ENVIRONMENTS.

c. 1/2" UPPER DISTRIBUTION SYSTEM DRAIN LINE (BY OTHERS; FRAMELESS FEATURES ONLY); NPT SS FEMALE CONNECTION COUPLING BY HARMONIC ENVIRONMENTS.
3. LEVEL SURFACE FOR THE BASIN (IF APPLICABLE).
4. STRUCTURAL SUPPORTS AS NECESSARY (FRAMELESS FEATURES ONLY).
5. IF WATER FEATURE TOWER EXTENDS UP BEHIND A SOFFIT OR FASCIA, SOFFIT OR FASCIA SHOULD BE INSTALLED AFTER WATER FEATURE IS IN PLACE.
6. IF THERE IS TO BE A SURROUND AT THE WATER FEATURE BASIN, IT SHOULD BE INSTALLED AFTER WATER FEATURE IS IN PLACE.
7. VERIFY THAT SITE FACILITIES (I.E ELEVATORS, DOORWAYS, ETC.) WILL ALLOW CLEAR ACCESS FOR ALL WATERFALL COMPONENTS TO BE DELIVERED AND MOVED INTO PLACE AS NEEDED.
8. ALLOW 6" MINIMUM ACCESS BEHIND AND AT LEAST 3" ON EACH SIDE OF THE MESH, UNLESS CLEAR ACCESS IS AVAILABLE FROM THE BACK OF THE MESH FOR MAINTENANCE.
9. MINIMUM 7" CLEARANCE REQUIRED ABOVE UPPER DISTRIBUTION SYSTEM FOR REMOVAL OF TOP COVER(S) AND 4" CLEARANCE IN FRONT AND BACK OF UPPER DISTRIBUTION SYSTEM FOR REMOVAL OF FRONT COVER(S) (IF APPLICABLE) AND ACCESS TO LIGHTING (IF APPLICABLE).
10. PLUMBING PER PLUMBING SCHEMATIC ON SHEETS 05 OR 11.
11. ELECTRICAL SERVICES AND OUTLETS PER ELECTRICAL SCHEMATIC ON SHEETS 06 OR 12.

ABBREVIATIONS FOUND IN THIS DOCUMENT REPRESENT THE FOLLOWING -

- TBD: TO BE DEFINED
- LBS: POUNDS (WEIGHT)
- UPPER DIST SYS: UPPER DISTRIBUTION SYSTEM
- NPT SS: NOMINAL PIPE SIZE STAINLESS STEEL

FOR REFERENCE PURPOSES ONLY
NOT FOR CONSTRUCTION USE

Harmonic Environments®
the premier maker of custom waterfalls®

1075 Hialeah Drive
Hialeah, FL 33010 USA
772.223.9011 p 772.382.6431 f

Generic Drawings

Harmonic Cascade® Series
Small Framed and Frameless
Stainless Steel Basin

PROJECT #	N/A
DATE	5/16/17
REVISION #	00
DRAWN BY	JYM
DESIGNED BY	TM
SHEET #	13 OF 13