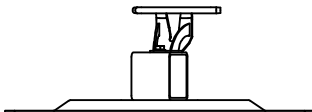
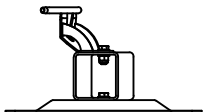
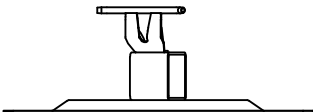
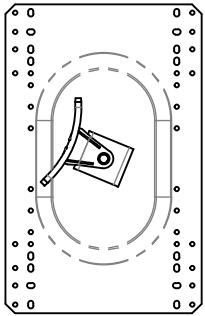
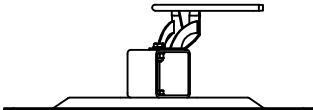
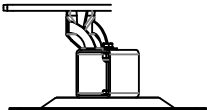
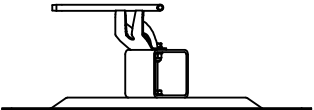
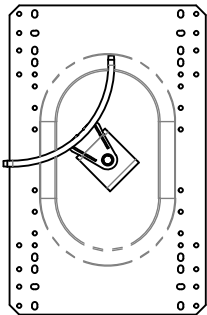
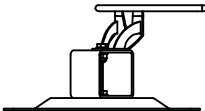
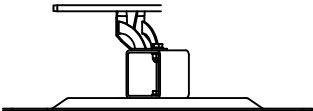
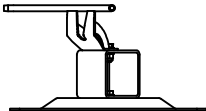
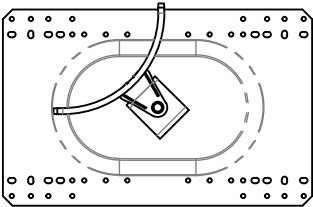


A	LAKL2STIC - ELASTIC - 1/2" METAL ROOF INTERMEDIATE & CORNER POST
B	LAKL20090 - 90CNR - ROOF MOUNTED CORNER - 90 DEGREES
C	LAKL20045 - 45CNR - ROOF MOUNTED CORNER - 45 DEGREES
D	LAKL20090 - 90CNR - ROOF MOUNTED CORNER - 90 DEGREES
E	LAKL20045 - 45CNR - ROOF MOUNTED CORNER - 45 DEGREES
F	LAKL20090 - 90CNR - ROOF MOUNTED CORNER - 90 DEGREES

APPLICATION
Allows the system to turn through 90°

COMPONENT SPECIFICATION

Material	Stainless Steel / Steel Components Throughout
Finish	Electropolish / Zinc Plated
Weight	
Issue Date: 27/09/2016	Issue No: 6



LAKL20090 - 90CNR - ROOF
MOUNTED CORNER - 90 DEGREES

LAKL20045 - 45CNR - ROOF
MOUNTED CORNER - 45 DEGREES