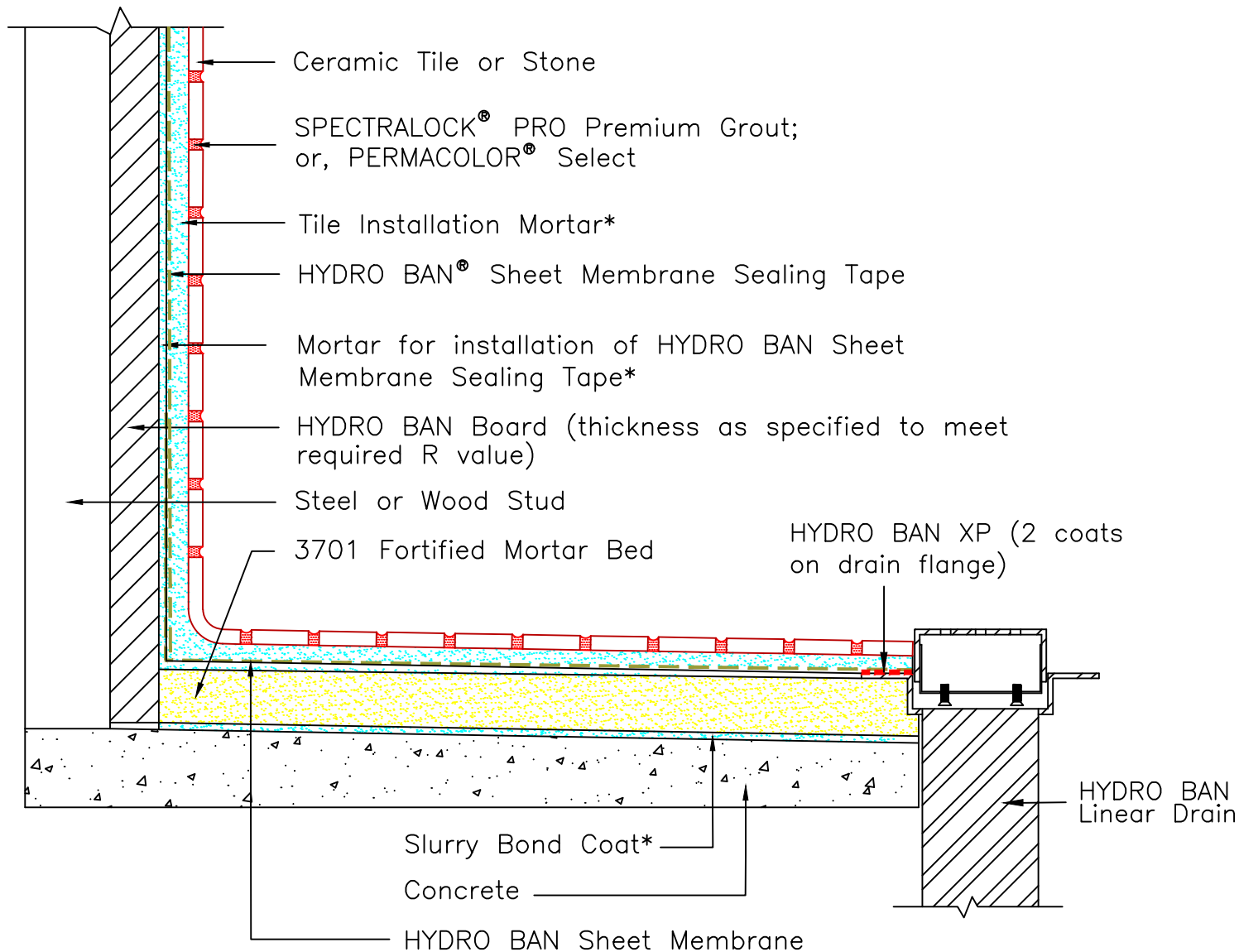




# Drawing No. ES-SR614 HYDRO BAN Board and Linear Drain



NOTE: \* HYDRO BAN Sheet Membrane, HYDRO BAN Sheet Membrane Sealing Tape, slurry bond coat and tile installation mortar to be either 257 TITANIUM™, 254 Platinum or MULTIMAX™ LITE. ^ HYDRO BAN Board Sealing Tape and Pre-Formed Corners to be used at all board joints, fastener penetrations and corners. Pipe penetrations to be treated with HYDRO BAN Sheet Membrane Pipe Collar as stated in D.S. 040.0. This detail is intended to show installation of LATICRETE products and is not to be used to show steam room construction, placement of insulation, type of finish, structural considerations, or other design features.

Revision Date: 11/21

Scale: N.T.S.

AS A PROFESSIONAL COURTESY, LATICRETE OFFERS TECHNICAL SERVICES FREE OF CHARGE. THE USER MAINTAINS ALL RESPONSIBILITY FOR VERIFYING THE APPLICABILITY AND SUITABILITY OF THE TECHNICAL SERVICE OR INFORMATION PROVIDED.

(C)2021 LATICRETE INTERNATIONAL, INC. ALL RIGHTS RESERVED. THE RIGHT TO UTILIZE LATICRETE DETAILS FOR COMMERCIAL PURPOSES IS GRANTED EXCLUSIVELY TO CONTRACTORS, ARCHITECTS, QUANTITY SURVEYORS, ENGINEERS, AND SPECIFICATIONS WRITERS. ALL TRADEMARKS SHOWN ARE THE INTELLECTUAL PROPERTIES OF THEIR RESPECTIVE OWNERS.