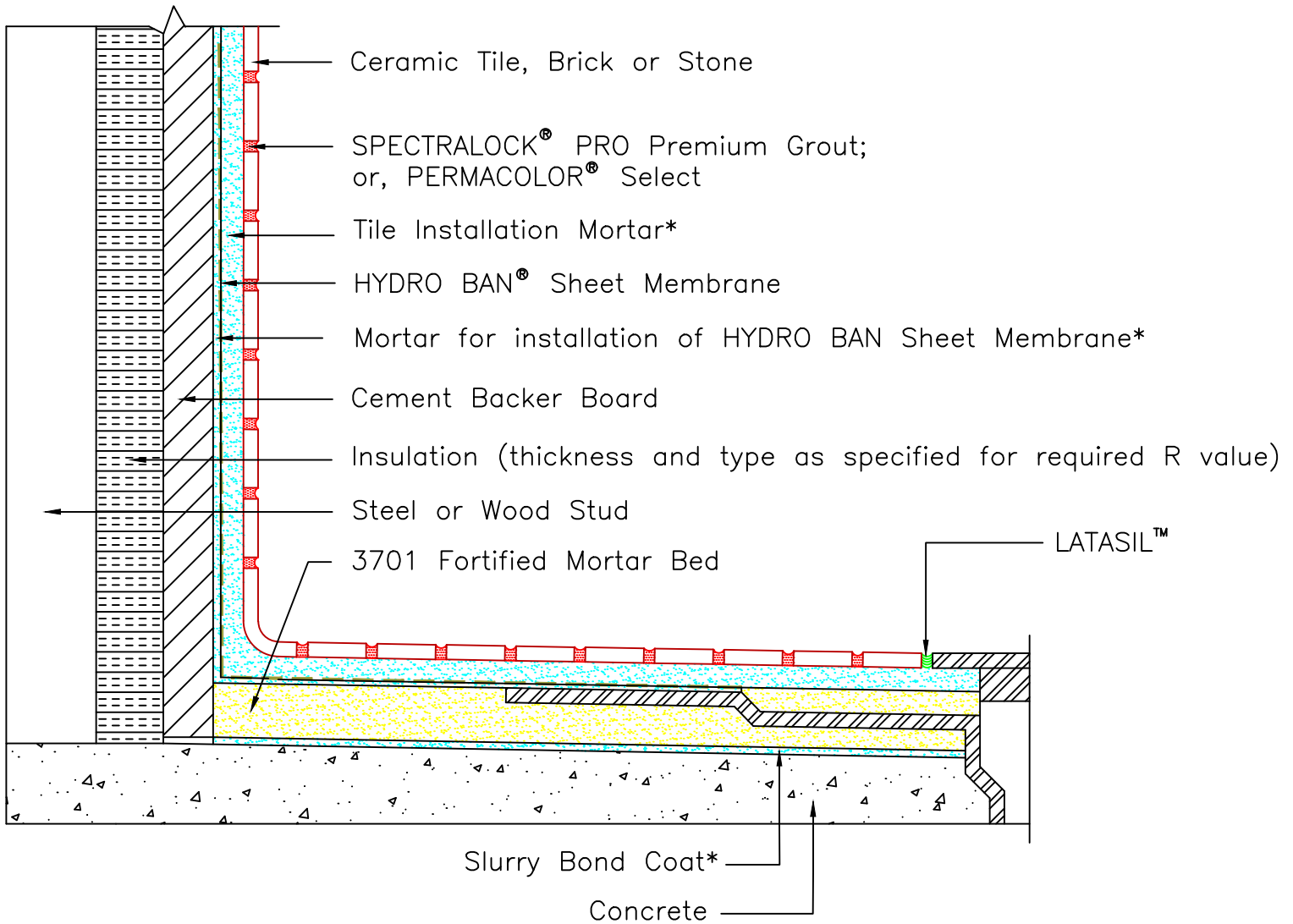




Drawing No. ES-SR614 HYDRO BAN Sheet Membrane and Bonding Flange Drain



NOTE: Cement Backer Board to be installed per board manufacturer's written installation instructions, including taping of joints. All fastener penetrations to be treated with HYDRO BAN Board Sealing Tape or HYDRO BAN Sheet Membrane Pipe Collar as stated in D.S. 040.0. This detail is intended to show installation of LATICRETE products and is not to be used to show steam room construction, placement of insulation, type of finish, structural considerations, or other design features. Insulation must be of proper type and thickness to ensure that dew point temperature occurs within the insulation and prevent condensation within the concrete or concrete masonry wall. Insulation to be continuous on walls and ceiling except at slip joints. * Slurry bond coat, tile installation mortar and mortar for installation of HYDRO BAN Sheet Membrane to be either 257 TITANIUM™, 254 Platinum or MULTIMAX™ LITE.

Revision Date: 11/21

Scale: N.T.S.

AS A PROFESSIONAL COURTESY, LATICRETE OFFERS TECHNICAL SERVICES FREE OF CHARGE. THE USER MAINTAINS ALL RESPONSIBILITY FOR VERIFYING THE APPLICABILITY AND SUITABILITY OF THE TECHNICAL SERVICE OR INFORMATION PROVIDED.

(C)2021 LATICRETE INTERNATIONAL, INC. ALL RIGHTS RESERVED. THE RIGHT TO UTILIZE LATICRETE DETAILS FOR COMMERCIAL PURPOSES IS GRANTED EXCLUSIVELY TO CONTRACTORS, ARCHITECTS, QUANTITY SURVEYORS, ENGINEERS, AND SPECIFICATIONS WRITERS. ALL TRADEMARKS SHOWN ARE THE INTELLECTUAL PROPERTIES OF THEIR RESPECTIVE OWNERS.