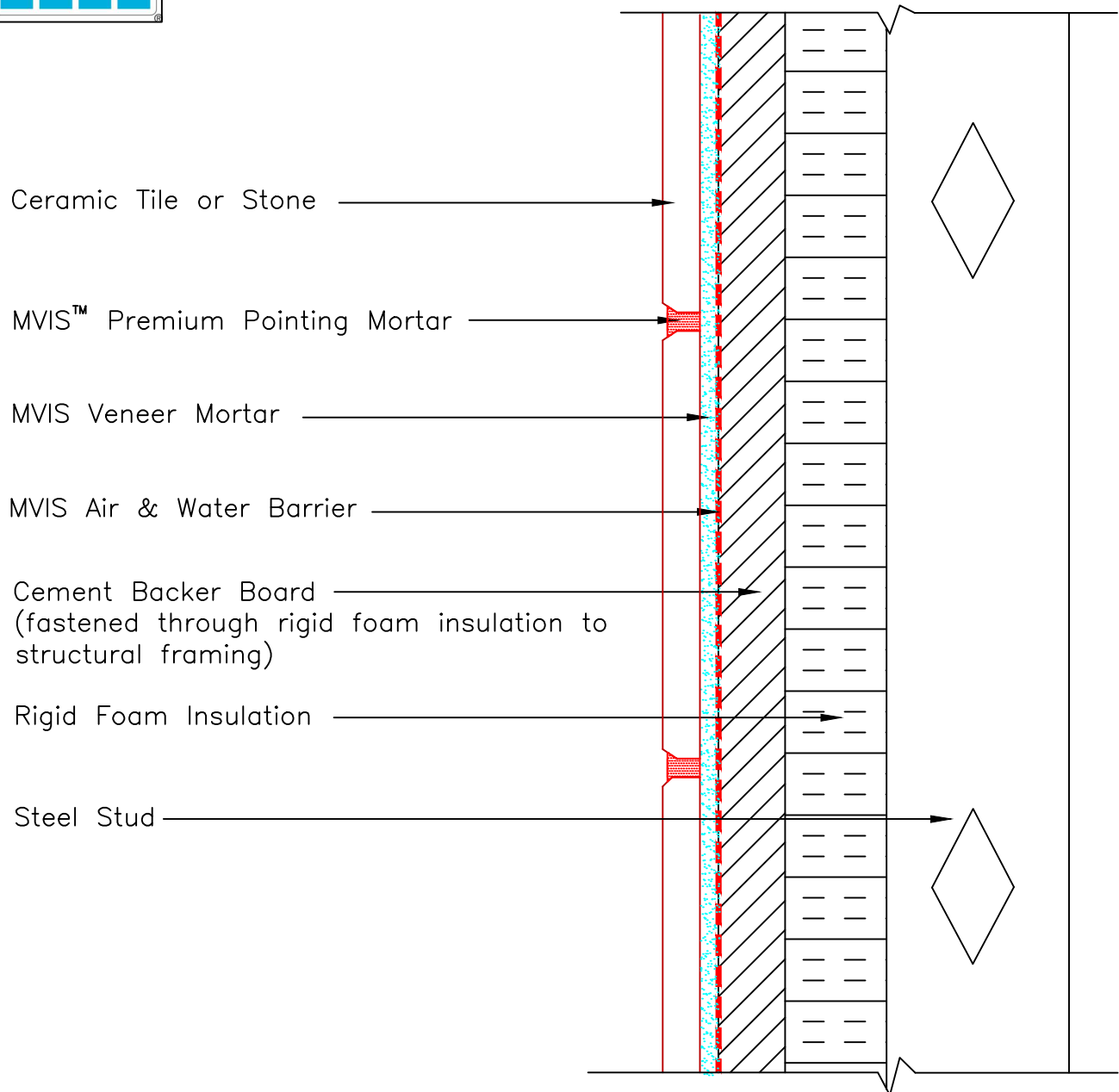




Drawing No. ES W244(E) Rigid Foam Insulation



NOTE: Vapor Barrier, Air Barrier, Weather Barrier, Insulation, Waterproofing, Fastener Type, and Furring Type/Location to be Determined by Design Professional. Maximum Allowable Deflection Under All Live, Dead and Impact Loads, Including Concentrated Loads, Must Not Exceed $L/600$ Where L =Span Length. Design Professional to Ensure Compliance With Building Code(s). Weather Barrier System Continuity to be Designed and Verified By Project Design Professional.

Revision Date: 11/21

Scale: N.T.S.

AS A PROFESSIONAL COURTESY, LATICRETE OFFERS TECHNICAL SERVICES FREE OF CHARGE. THE USER MAINTAINS ALL RESPONSIBILITY FOR VERIFYING THE APPLICABILITY AND SUITABILITY OF THE TECHNICAL SERVICE OR INFORMATION PROVIDED.

(C)2021 LATICRETE INTERNATIONAL, INC. ALL RIGHTS RESERVED. THE RIGHT TO UTILIZE LATICRETE DETAILS FOR COMMERCIAL PURPOSES IS GRANTED EXCLUSIVELY TO CONTRACTORS, ARCHITECTS, QUANTITY SURVEYORS, ENGINEERS, AND SPECIFICATIONS WRITERS. ALL TRADEMARKS SHOWN ARE THE INTELLECTUAL PROPERTIES OF THEIR RESPECTIVE OWNERS.