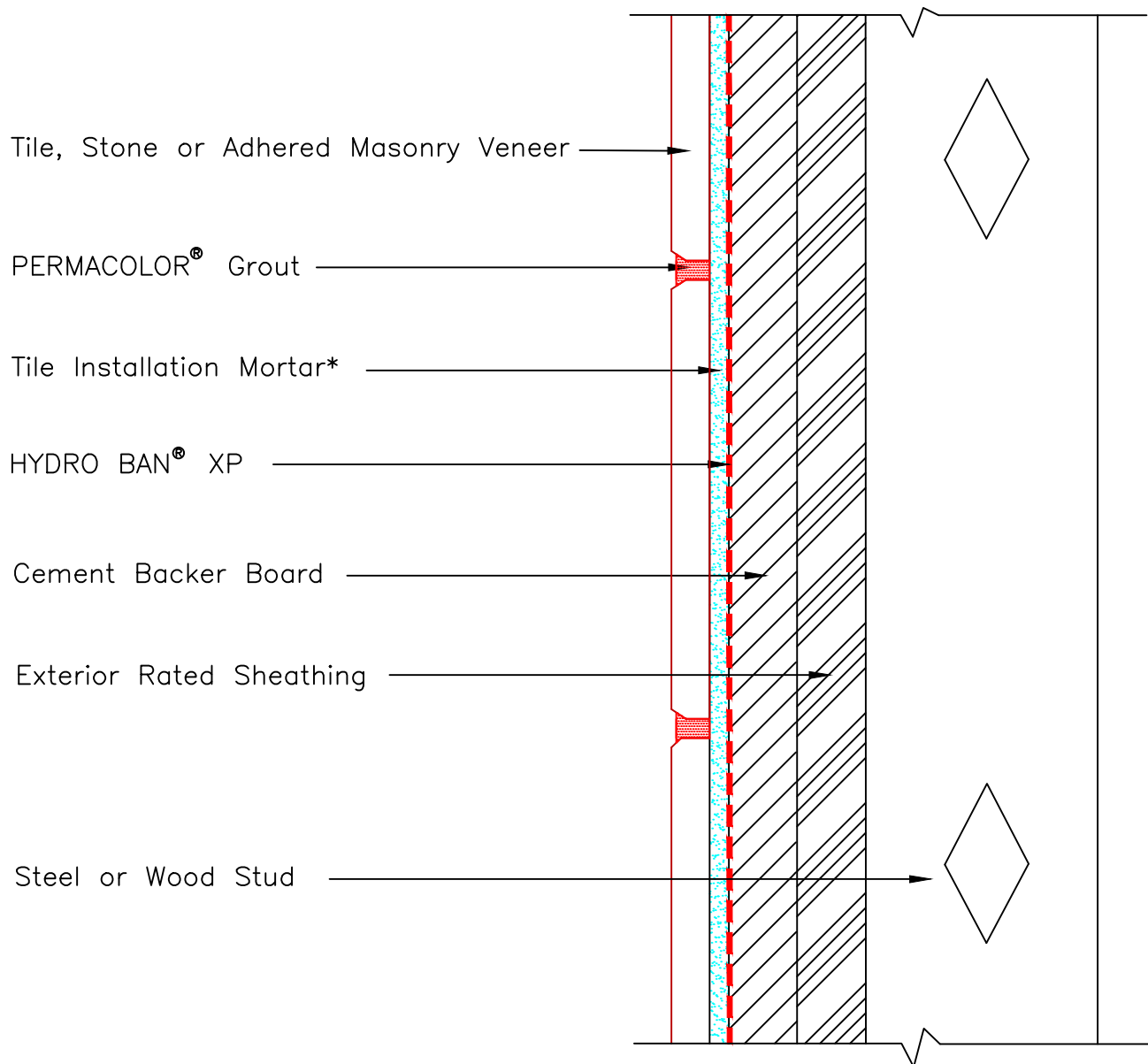




Drawing No. ES W244(E) Sheathing



This detail is intended for use in showing installation of LATICRETE products, and should not be used as the design for wall construction. Wall construction system must be designed and approved by project design professional. Wall construction to meet minimum deflection rating of $L/600$ under anticipated loads. Proper flashing to be installed at top and bottom of wall and any penetrations to prevent water intrusion into wall cavity. * Tile installation mortar to be either 254 Platinum, 257 TITANIUM™ or MULTIMAX™ LITE.

Revision Date: 11/21

Scale: N.T.S.

AS A PROFESSIONAL COURTESY, LATICRETE OFFERS TECHNICAL SERVICES FREE OF CHARGE. THE USER MAINTAINS ALL RESPONSIBILITY FOR VERIFYING THE APPLICABILITY AND SUITABILITY OF THE TECHNICAL SERVICE OR INFORMATION PROVIDED.

(C)2021 LATICRETE INTERNATIONAL, INC. ALL RIGHTS RESERVED. THE RIGHT TO UTILIZE LATICRETE DETAILS FOR COMMERCIAL PURPOSES IS GRANTED EXCLUSIVELY TO CONTRACTORS, ARCHITECTS, QUANTITY SURVEYORS, ENGINEERS, AND SPECIFICATIONS WRITERS. ALL TRADEMARKS SHOWN ARE THE INTELLECTUAL PROPERTIES OF THEIR RESPECTIVE OWNERS.