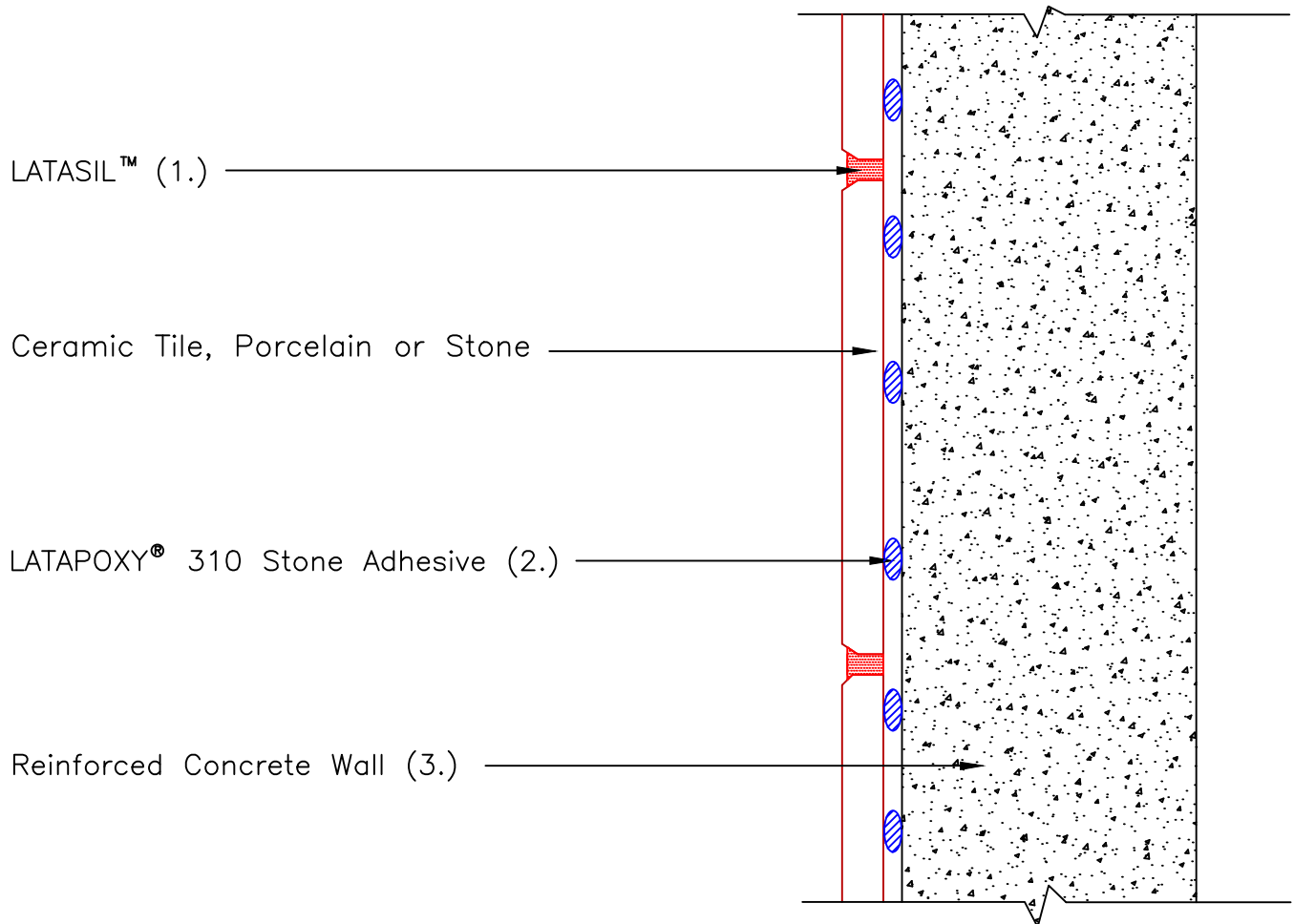




## Detail ES-W309(E)



### NOTES:

- 1.) Flexible Sealant – LATASIL
- 2.) Consult Data Sheet for appropriate diameter dab size thickness and veneer requirements.
- 3.) Surface must be plumb and smooth, clean and free of debris and any contaminants. Minimum requirements for concrete shall be 6" (150mm) thickness; 3,500 psi (24MPa) and 28 days old. Maximum deflection under total anticipated load not to exceed L/360 for tile or L/480 for stone.
- 4.) Install weeps as specified on project documents and industry standards.
- 5.) Consult LATICRETE Technical Services for exterior installations.
- 6.) Installation height not to exceed 30' (9.1m) unless approved by design professional.

Revision Date: 11/21

Scale: N.T.S.

AS A PROFESSIONAL COURTESY, LATICRETE OFFERS TECHNICAL SERVICES FREE OF CHARGE. THE USER MAINTAINS ALL RESPONSIBILITY FOR VERIFYING THE APPLICABILITY AND SUITABILITY OF THE TECHNICAL SERVICE OR INFORMATION PROVIDED.

(C)2021 LATICRETE INTERNATIONAL, INC. ALL RIGHTS RESERVED. THE RIGHT TO UTILIZE LATICRETE DETAILS FOR COMMERCIAL PURPOSES IS GRANTED EXCLUSIVELY TO CONTRACTORS, ARCHITECTS, QUANTITY SURVEYORS, ENGINEERS, AND SPECIFICATIONS WRITERS. ALL TRADEMARKS SHOWN ARE THE INTELLECTUAL PROPERTIES OF THEIR RESPECTIVE OWNERS.