

	EPS FORM	DEPTH		FLOW GPM
		MIN	MAX	
SHALLOW EPS FORMS	06	6"	6 1/2"	200
	07	6 1/2"	7"	228
	08	7"	7 1/2"	257
	09	7 1/2"	8"	286
	10	8"	8 1/2"	315
	11	8 1/2"	9"	345
	12	9"	9 1/2"	374
	13	9 1/2"	10"	404
	14	10"	10 1/2"	433
	15	10 1/2"	11"	463
	16	11"	11 1/2"	493
	17	11 1/2"	12"	523
	18	12"	12 1/2"	553
	19	12 1/2"	13"	583
	20	13"	13 1/2"	613
	21	13 1/2"	14"	643
	22	14"	14 1/2"	673
	23	14 1/2"	15"	704
DEEP EPS FORMS	24	15"	15 1/2"	734
	25	15 1/2"	16"	764
	26	16"	16 1/2"	794
	27	16 1/2"	17"	824
	28	17"	17 1/2"	855
	29	17 1/2"	18"	885
	30	18"	18 1/2"	915
	31	18 1/2"	19"	946
	32	19"	19 1/2"	976
	33	19 1/2"	20"	1006
	34	20"	20 1/2"	1037
	35	20 1/2"	21"	1067
	36	21"	21 1/2"	1098
	37	21 1/2"	22"	1128
	38	22"	22 1/2"	1158
	39	22 1/2"	23"	1189
	40	23"	23 1/2"	1219
	41	23 1/2"	24"	1250
	42	24"	24 1/2"	1280
	43	24 1/2"	25"	1311
	44	25"	25 1/2"	1341
	45	25 1/2"	26"	1372

(*) CUSTOM SLOPES & DEPTHS AVAILABLE

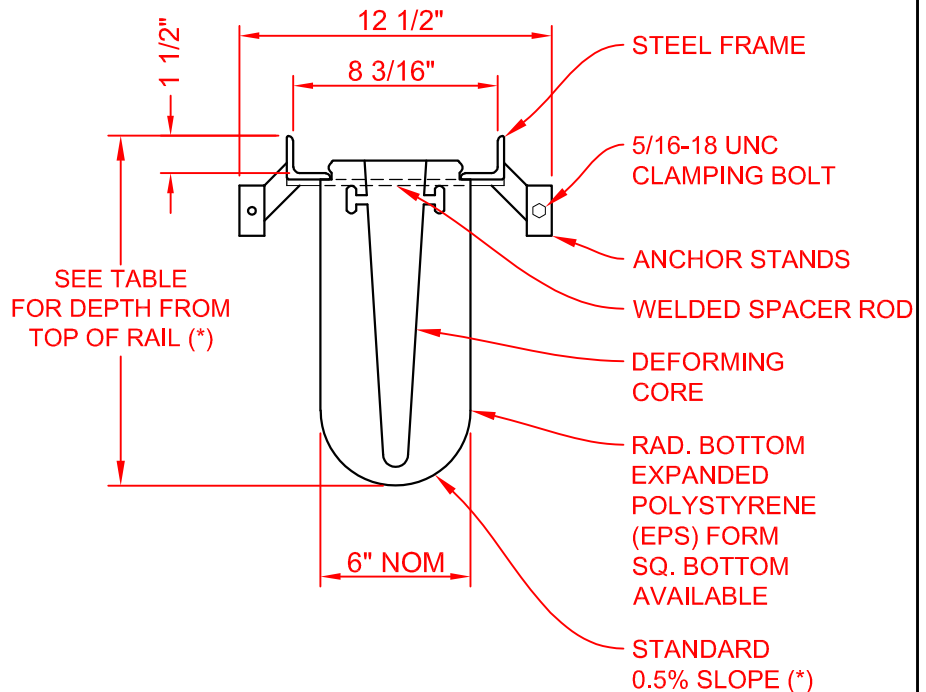
STEEL FRAMES & EPS FORMS ARE STANDARD 8'-0" LENGTHS

06	07	08	09	10	11	12	13	14	15	16	17	18	19	20	21	22	23
----	----	----	----	----	----	----	----	----	----	----	----	----	----	----	----	----	----

SHALLOW EPS FORMS

24	25	26	27	28	29	30	31	32	33	34	35	36	37	38	39	40	41	42	43	44	45
----	----	----	----	----	----	----	----	----	----	----	----	----	----	----	----	----	----	----	----	----	----

DEEP EPS FORMS



NOTES:

1. INSTALLATION TO BE COMPLETED IN ACCORDANCE WITH MANUFACTURER'S SPECIFICATIONS AND INSTALLATION INSTRUCTIONS.
2. A TRENCH SHALL BE EXCAVATED A MINIMUM OF 12" WIDER THAN THE OVERALL WIDTH OF THE STEEL FRAME (6" MINIMUM ON EACH SIDE) AND A MINIMUM OF 6 INCHES DEEPER THAN THE OVERALL DEPTH OF THE ECONODRAIN EPS FORM.
3. DO NOT SCALE DRAWINGS.

A

Copyright © 2014 MultiDrain Systems, Inc.

MultiDrain

1405 INDUSTRIAL DRIVE
STATESVILLE, NC 28625
(704) 508-1010
1-800-433-1119
www.multidrain.com

EconoDrain® Series #6
Standard Pre-Welded Frame

FILE NUMBER:

CSI-ED-EPS-0696-20a

REV: 00

Proprietary rights of MultiDrain Systems, Inc. are included in the information disclosed herein. The recipient, by accepting this document, agrees that neither this document nor the information disclosed herein nor any part thereof shall be copied, reproduced or transferred for manufacturing or for any other purpose except as specifically authorized in writing by MULTIDRAIN.

DISCLAIMER: The customer and the customer's architects, engineers, consultants and other professionals are completely responsible for the selection, installation, and maintenance of any product purchased from MultiDrain, and EXCEPT AS EXPRESSLY PROVIDED IN MULTIDRAIN'S STANDARD WARRANTIES, MULTIDRAIN MAKES NO WARRANTY, EXPRESS OR IMPLIED, AS TO THE SUITABILITY, DESIGN, MERCHANTABILITY, OR FITNESS OF THE PRODUCT FOR CUSTOMER'S APPLICATION. Copies of MultiDrain's standard warranties are available upon request.