

SPECIFICATIONS: LANGFORD

Classification: Residential Structure - Single Dwelling

Code: ASME A17.1 2013, Section 5.3

Operation: Automatic

Model: Artisan CUSTOM

Drive Type: Winding Drum

Power Supply: 230V, 30A Single Phase, 50/60 Hz.

Motor: 3 HP with Integrated Brake

Capacity: 950 lbs

Speed: 30 fpm

Suspension Type: 2 Aircraft Cables, 3/8" Diameter, 7x19

Cable Strength: 14,400 lbs

Interlocks: Honeywell RDI, EMI

Safeties: ECLW 1-A, Type A Instantaneous

Cab Walls: Clear Polycarbonate, Complies with ANSI Z97.1

Hoistway Walls: Clear Polycarbonate, Complies with ANSI Z97.1

Hoistway Frame: Steel and Aluminum Frame, 8 lb T-Rails

Pit/Floor Load: 3500 lbs Dead Load, 7000 Impact Load

Cab Weight: 550 lbs

Number of Levels: 3 Levels

Travel: 266"

Pit Depth: Pitless

Cab Size: 36.606" Width x 25.606" Depth x 78" Tall

Gate Type: Accordion

Gate Operation: Manual

COP Type: Push Button

Cab Lights: 2 x LED

Frame Finish: Powder Coat - Textured White

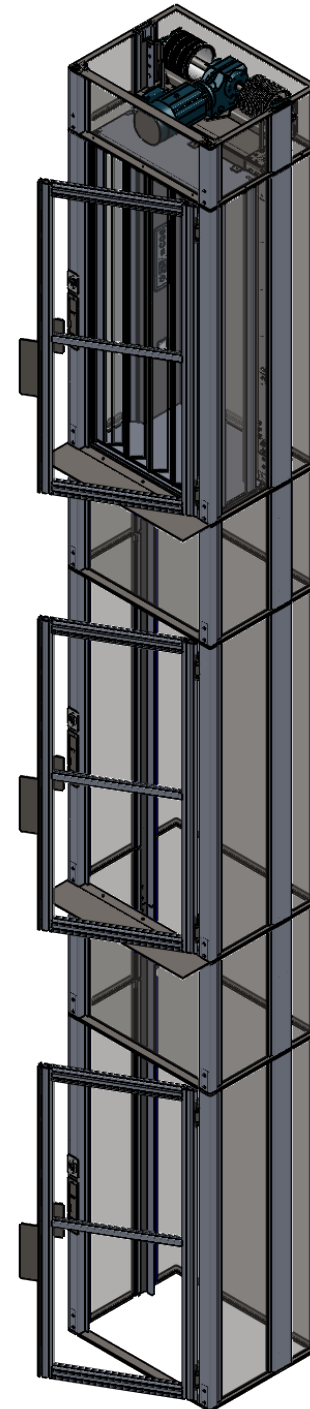
Cab Finish: Powder Coat - Textured White

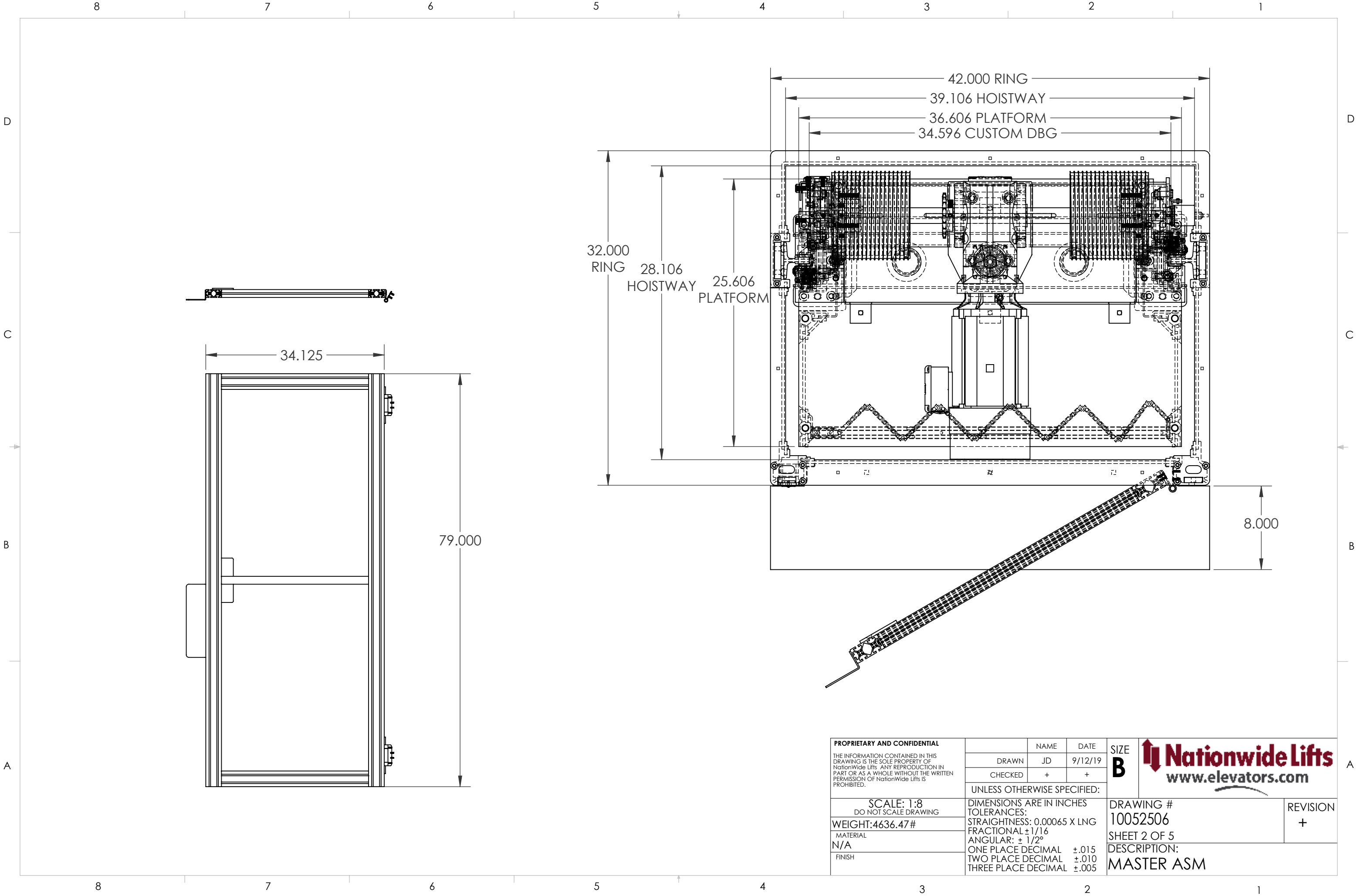
Floor Finish: Powder Coat - Textured White


Handrail Finish: Powder Coat - Stainless

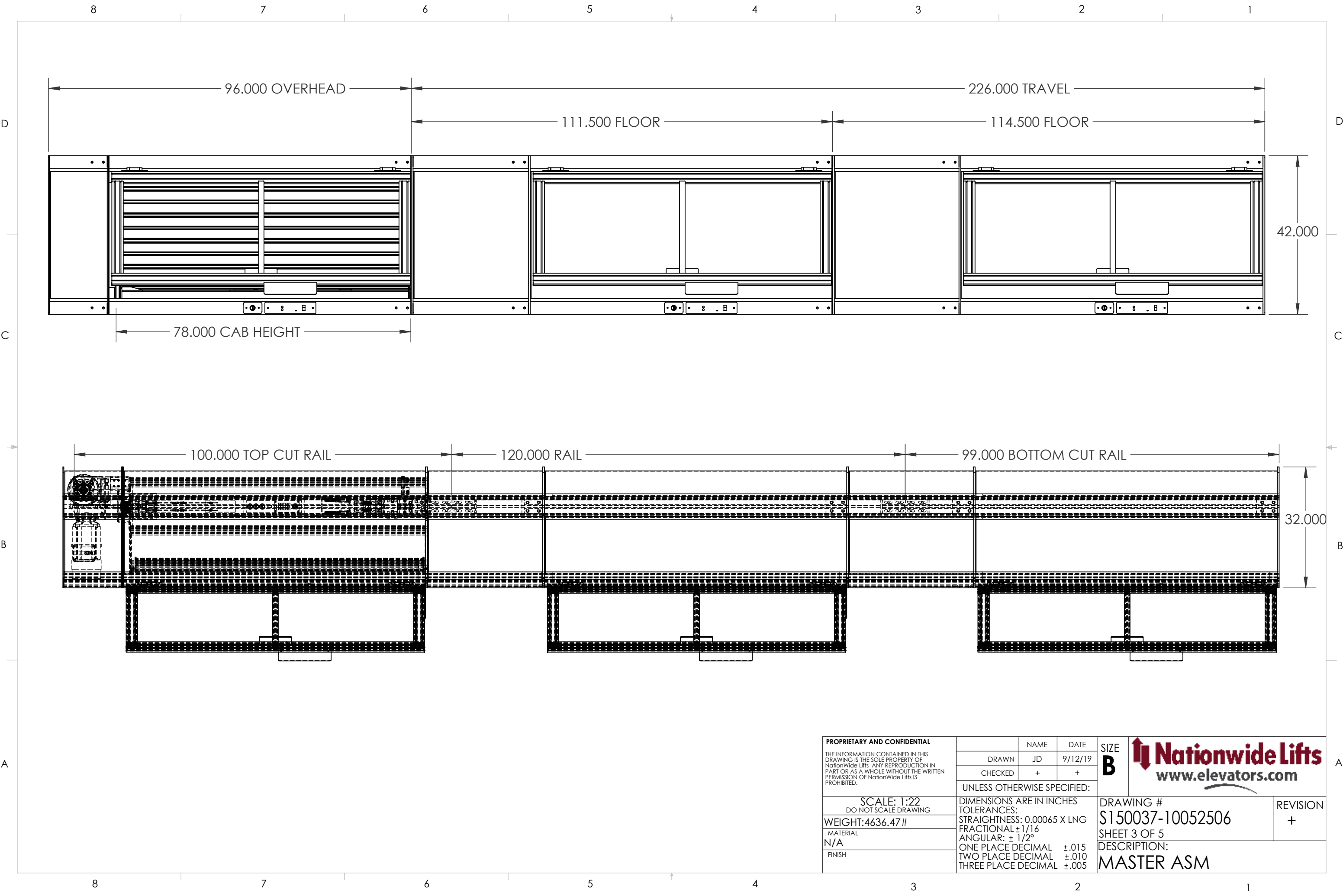
Gate Finish: Powder Coat - Textured White


COP Finish: Powder Coat - Stainless

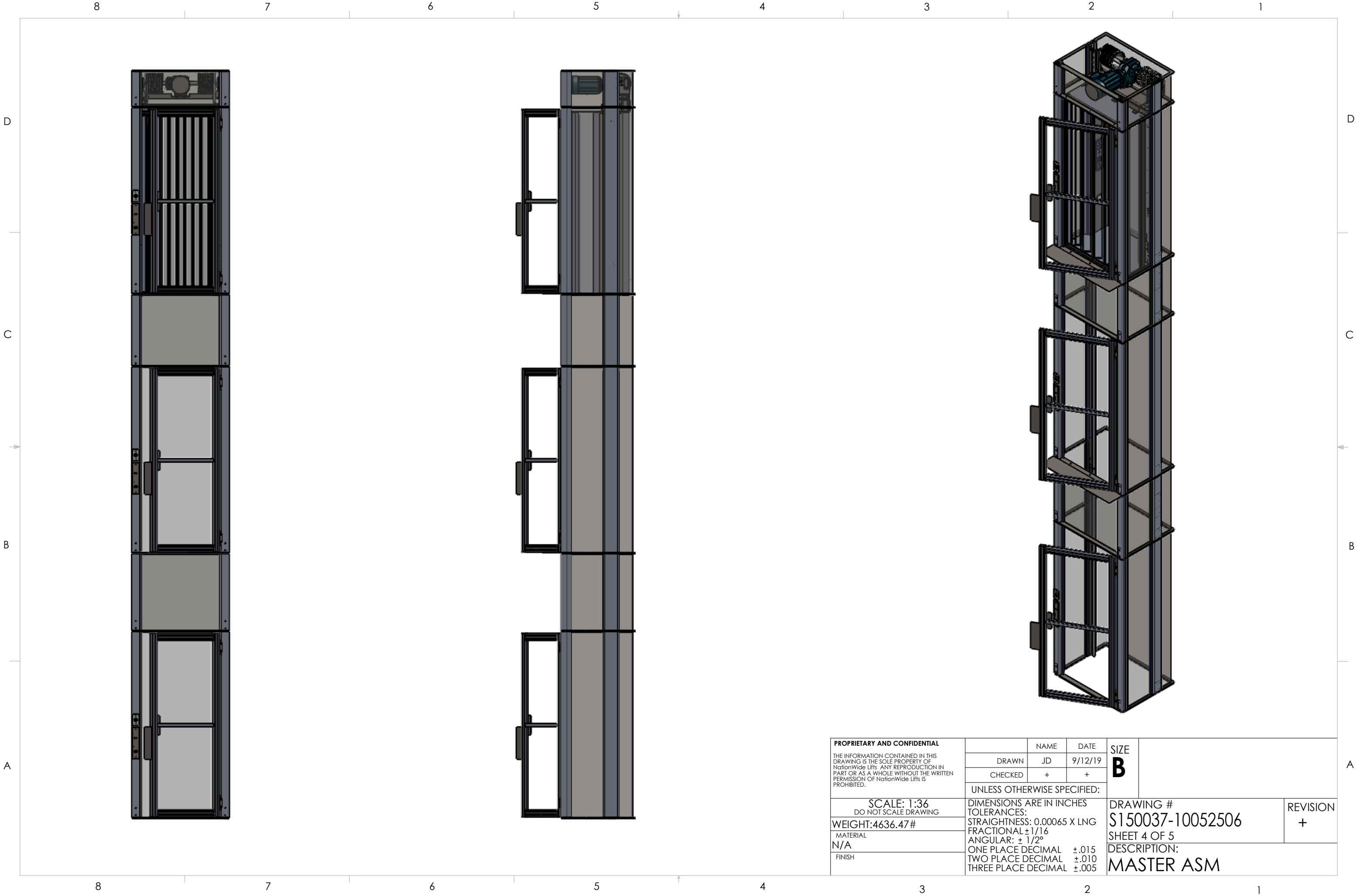




PROPRIETARY AND CONFIDENTIAL			NAME	DATE	SIZE B	 Nationwide Lifts www.elevators.com	DRAWING # 10052506 SHEET 2 OF 5 DESCRIPTION: MASTER ASM	REVISION +
THE INFORMATION CONTAINED IN THIS DRAWING IS THE SOLE PROPERTY OF Nationwide Lifts. ANY REPRODUCTION IN PART OR AS A WHOLE WITHOUT THE WRITTEN PERMISSION OF Nationwide Lifts IS PROHIBITED.		DRAWN	JD	9/12/19				
		CHECKED	+	+				
		UNLESS OTHERWISE SPECIFIED:						
SCALE: 1:8 DO NOT SCALE DRAWING		DIMENSIONS ARE IN INCHES TOLERANCES: STRAIGHTNESS: 0.00065 X LNG FRACTIONAL ± 1/16 ANGULAR: ± 1/2°						
WEIGHT: 4636.47#		ONE PLACE DECIMAL ±.015						
MATERIAL N/A		TWO PLACE DECIMAL ±.010						
FINISH		THREE PLACE DECIMAL ±.005						



PROPRIETARY AND CONFIDENTIAL THE INFORMATION CONTAINED IN THIS DRAWING IS THE SOLE PROPERTY OF NationWide Lifts. ANY REPRODUCTION IN PART OR AS A WHOLE WITHOUT THE WRITTEN PERMISSION OF NationWide Lifts IS PROHIBITED.		NAME	DATE	SIZE B	 Nationwide Lifts www.elevators.com	
	DRAWN	JD	9/12/19			
	CHECKED	+	+			
	UNLESS OTHERWISE SPECIFIED:					
SCALE: 1:22 DO NOT SCALE DRAWING	DIMENSIONS ARE IN INCHES TOLERANCES: STRAIGHTNESS: 0.00065 X LNG FRACTIONAL ±1/16 ANGULAR: ± 1/2°			DRAWING # S150037-10052506		REVISION +
WEIGHT:4636.47#	ONE PLACE DECIMAL ±.015			SHEET 3 OF 5		
MATERIAL N/A	TWO PLACE DECIMAL ±.010			DESCRIPTION:		
FINISH	THREE PLACE DECIMAL ±.005			MASTER ASM		



PROPRIETARY AND CONFIDENTIAL			NAME	DATE	SIZE B			
THE INFORMATION CONTAINED IN THIS DRAWING IS THE SOLE PROPERTY OF NationWide Lifts. ANY REPRODUCTION IN PART OR AS A WHOLE WITHOUT THE WRITTEN PERMISSION OF NationWide Lifts IS PROHIBITED.		DRAWN	JD	9/12/19				
		CHECKED	+	+				
		UNLESS OTHERWISE SPECIFIED:						
SCALE: 1:36 DO NOT SCALE DRAWING		DIMENSIONS ARE IN INCHES TOLERANCES: STRAIGHTNESS: 0.00065 X LNG FRACTIONAL ±1/16 ANGULAR: ± 1/2° ONE PLACE DECIMAL ±.015 TWO PLACE DECIMAL ±.010 THREE PLACE DECIMAL ±.005			DRAWING #		REVISION +	
WEIGHT:4636.47#					S150037-10052506			
MATERIAL N/A					SHEET 4 OF 5		DESCRIPTION: MASTER ASM	
FINISH								

SITE PREPARATION

The following items are the responsibility of the owner or general contractor. These items must be completed prior to beginning the elevator installation.

- Electrical Main Power, Lighting Power, GFI, Lights, and Phone. See Electrical Preparation section.
- Wire chases must be run from the controller location to the top of elevator. See Electrical Preparation section.
- The lowest landing floor must be capable of supporting the load as specified in the drawings.
- Overhead clearance must meet the minimum requirements as outlined in the drawings.
- Finished floors must be installed prior to installation of the elevator.
- If elevator is attaching to a balcony, final handrails at balcony must not be installed prior to elevator. Precautions must be taken to protect the landings from fall hazards. Final handrails must be installed immediately after elevator.
- If the elevator is traveling through a hole in the floor, the hole must be cut to exact measurements as shown in drawings. The space between the ceiling and floor must be finished as it may be seen from inside the elevator.
- If a pit is required, the dimensions that match the drawings. Pit must be level, and be constructed to handle the load as specified in drawings.

ELECTRICAL PREPARATION

The location of the elevator controller must be discussed with the Elevator Contractor. Local and national codes must be considered when determining the location. There are several things that must be installed in the location of the controller. It is the responsibility of the Owner, General Contractor, or Electrician to install the following items in close proximity to the elevator controller.

- 240V, 30A Disconnect, Fused, 3 Pole, with Lockable Arm. Square D #D321N or equivalent will meet this requirement. There must be 36" of clear space in front of the disconnect.
- Live Phone Line. This can be a shared line. This will be routed from the controller to a phone located inside the elevator cab. This is required by code.
- 120V, 15A Disconnect, Fused, 2 Pole, with Lockable Arm. Square D #D221N or equivalent will meet this requirement. There must be 36" of clear space in front of the disconnect.
- Live Phone Line. This can be a shared line. This will be routed from the controller to a phone located inside the elevator cab. This is required by code.
- There must be 36" of clear space in front of the controller. The controller measure 24"w x 24"h x 8"d.
- Wire chases must be run from controller location to top of elevator. If there is not a way to run to the ceiling above the elevator, consult with the Elevator Contractor for an alternative solution. One wire chase is designated high voltage and must be capable of holding qty 8 AWG #12 wires. One wire chase is designated low voltage and must be capable of holding qty 10 CAT5 wires. Note, the wires can be pulled prior to sheetrock if needed.

