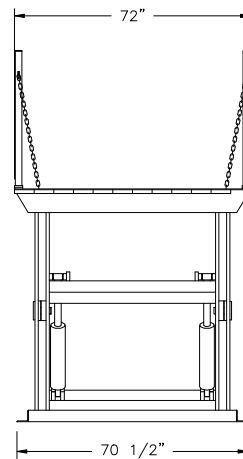
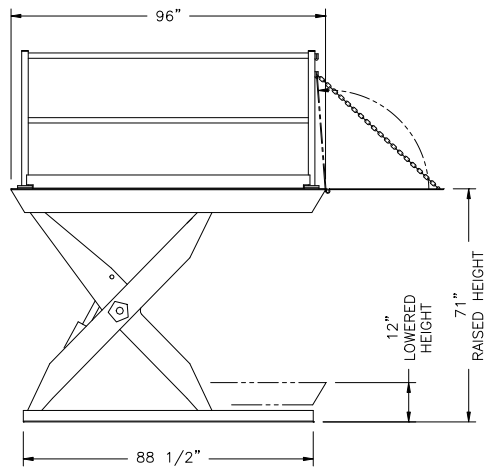


DRAWING
NO. 260-6202



NOTE: Refer to appropriate pit construction drawing (available from your Pentlift representative), for dimensions and information relative to pit construction and conduit routing requirements.



PENTALIFT EQUIPMENT CORPORATION
MATERIALS HANDLING EQUIPMENT

NOTICE: THIS DRAWING IN DESIGN AND DETAIL IS THE PROPERTY OF PENTALIFT EQUIPMENT CORPORATION AND IS LOANED SUBJECT TO RETURN ON DEMAND AND UNDER THE EXPRESS CONDITION THAT IT MUST NOT BE COPIED OR USED EXCEPT BY PERMISSION OF PENTALIFT EQUIPMENT CORPORATION.

DRAWN BY

DATE

TITLE
6 FT x 8 FT DOCK LIFT
3,000 TO 15,000 LBS CAPACITY

FOR SERIES
HED

SCALE	LOT QTY	DECIMAL TOLERANCES ± 0.25 (EXCEPT AS NOTED)	FRACTION TOLERANCES ± 1/4 (EXCEPT AS NOTED)	DRAWING NO.	REV
				260-6202	