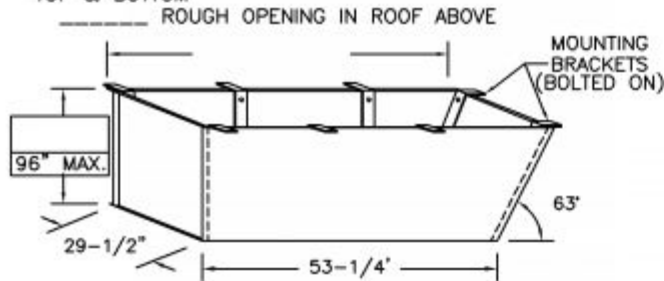


# SUPER SIMPLEX WITH DEEP ANGLE FRAME WITH NON-RATED ALUMINUM DOOR

ONE INCH FLANGE  
ALL AROUND  
TOP & BOTTOM

(USE THIS DRAWING FOR CEILING HEIGHTS UP TO 9' 9")

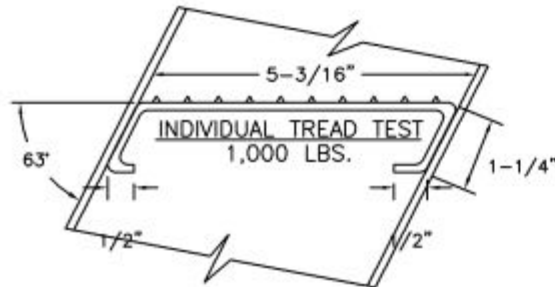
TOP STEP LOCATED AT  
ONE INCH BELOW  
BOTTOM OF FRAME



30" x 54" REQUIRED  
ROUGH OPENING IN CEILING

## SPECIAL DEEP FRAME

1/8" STEEL, 63 DEGREE ANGLE ONE END, 90 DEGREE  
OTHER END, TO CONTAIN SUPER SIMPLEX FOLDING STAIRWAY  
CUT FOR EXACT FINISHED CEILING HEIGHT. THIS FRAME, WITH  
FACTORY INSTALLED BUILT-IN TREADS, PROVIDES STEPS  
FROM THE DROPPED-CEILING LINE TO THE UPPER FLOOR.

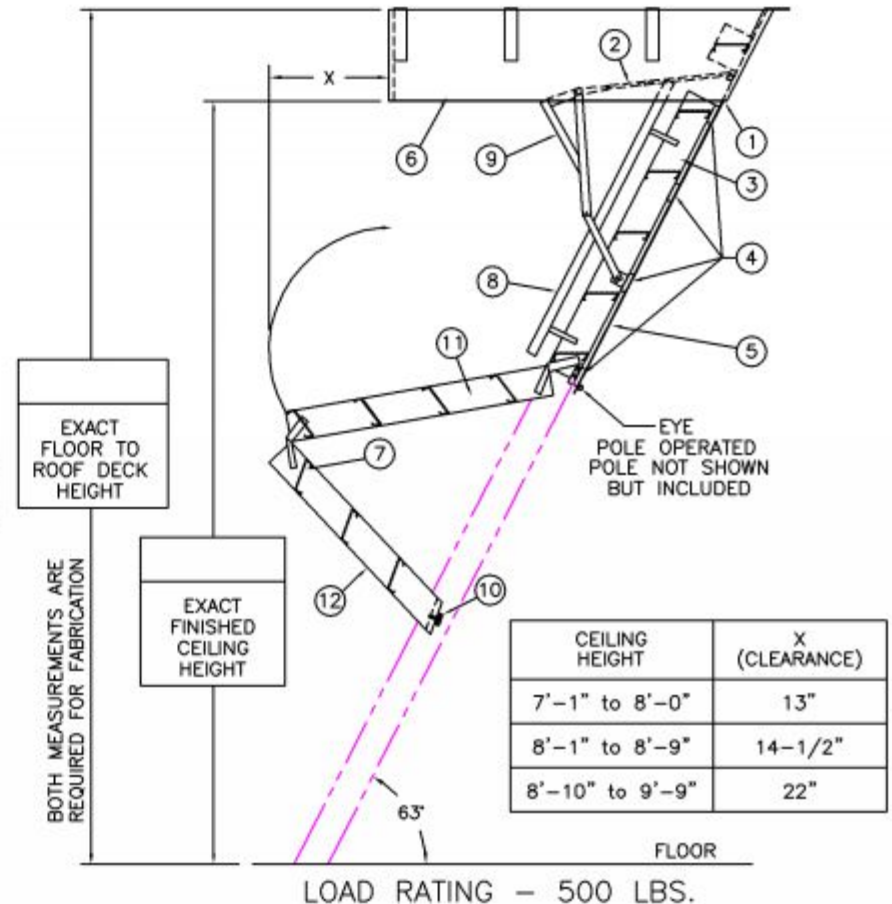
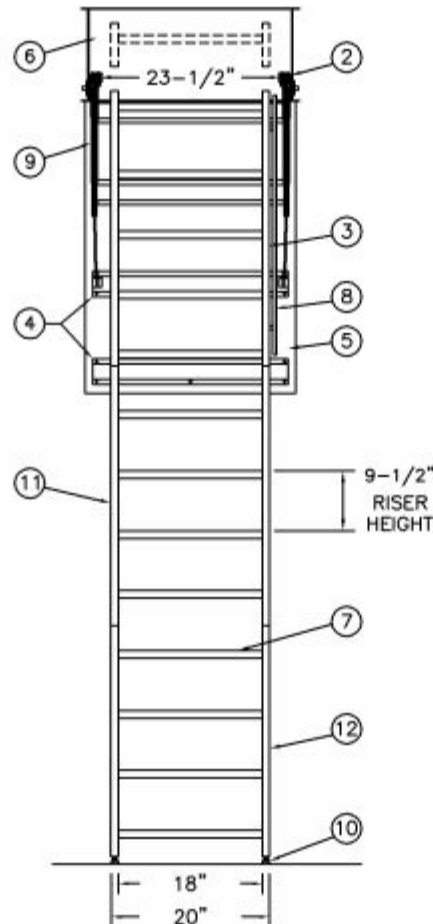


## NOTES

IF FLOOR ABOVE IS MORE THAN 12" ABOVE CEILING LINE,  
63 DEGREE ANGLE FRAME IS RECOMMENDED.

DIMENSIONS ON THIS DRAWING PERTAIN ONLY TO CEILING  
HEIGHTS 9'-9" OR LESS.

(SHIPS COMPLETELY ASSEMBLED AS ONE UNIT)



## LADDER LEGEND

- |                           |                              |
|---------------------------|------------------------------|
| 1. STEEL PIANO DOOR HINGE | 7. TREAD (SERRATED ALUM.)    |
| 2. DOUBLE SPRING ACTION   | 8. HANDRAIL RIGHT SIDE ONLY  |
| 3. SIDE RUNNER 5" ALUM.   | 9. EXTRA HEAVY OPERATING ARM |
| 4. BATTEN 1/8" ALUM.      | 10. ADJUSTABLE FOOT          |
| 5. DOOR PANEL 1/8" ALUM.  | 11. MIDDLE SECTION           |
| 6. STEEL ANGLE FRAME      | 12. BOTTOM SECTION           |

S1117-A-30



Precision Ladders, LLC

P.O. BOX 2279 Morristown, TN 37816-2279  
Ph: (423) 586-2265 Fax: (423) 586-2091  
www.PrecisionLadders.com

WORK ORDER ( )

DWG. CHECK

BUILT BY:

CHECKED BY:

ARCHT OR ENGR.

PURCHASE ORDER

DRAWN BY:

TMF

PROJECT

REVISION

DATE

8/19/21

PURCHASER

MODEL#

S1

QTY.

PRECISION REP

SERIAL#