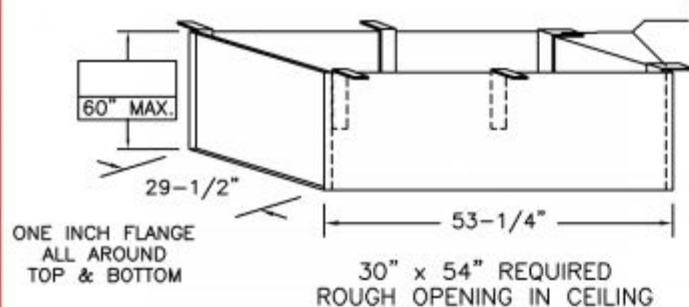


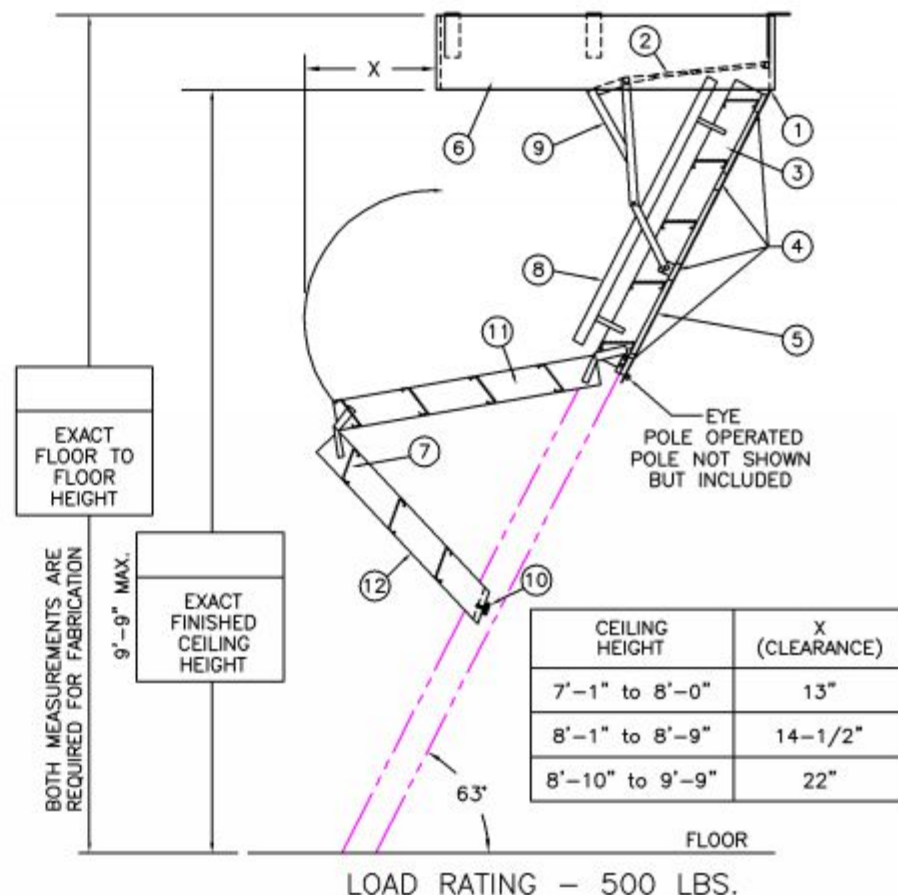
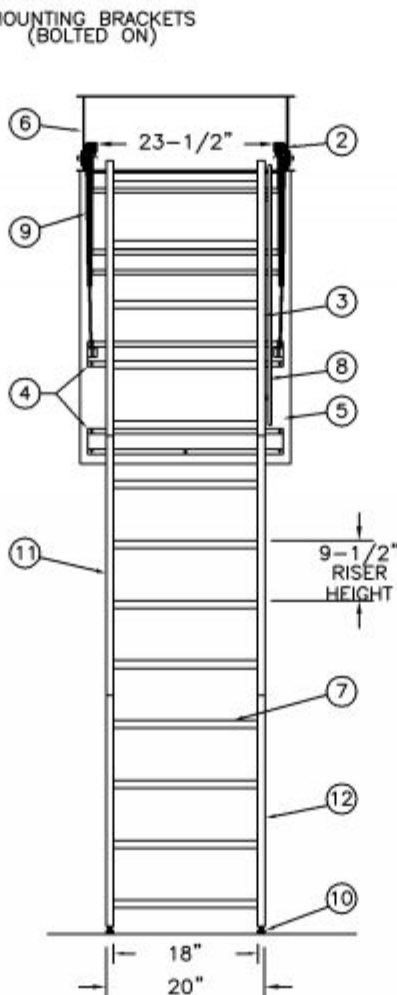
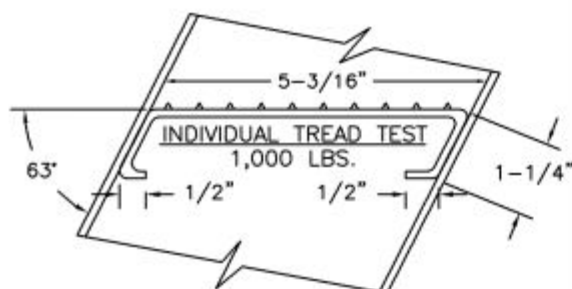
# SUPER SIMPLEX DISAPPEARING STAIRWAY WITH NON-RATED ALUMINUM DOOR

(USE THIS DRAWING FOR CEILING HEIGHTS 9'-9" OR LESS)



## STANDARD BOX FRAME FABRICATED FROM 1/8" STEEL

THIS DRAWING ACCOMMODATES FRAME DEPTHS  
FROM 6" TO 11".



## NOTES

IF FLOOR ABOVE IS MORE THAN 12" ABOVE CEILING LINE,  
63 DEGREE ANGLE FRAME IS RECOMMENDED.

DIMENSIONS ON THIS DRAWING PERTAIN ONLY TO CEILING  
HEIGHTS 9'-9" OR LESS AND LESS THAN A 12" FRAME.

SHIPS COMPLETELY ASSEMBLED AS ONE UNIT.

## LADDER LEGEND

- |                           |                              |
|---------------------------|------------------------------|
| 1. STEEL PIANO DOOR HINGE | 7. TREAD (SERRATED ALUM.)    |
| 2. DOUBLE SPRING ACTION   | 8. HANDRAIL RIGHT SIDE ONLY  |
| 3. SIDE RUNNER 5" ALUM.   | 9. EXTRA HEAVY OPERATING ARM |
| 4. BATTEN 1/8" ALUM.      | 10. ADJUSTABLE FOOT          |
| 5. DOOR PANEL 1/8" ALUM.  | 11. MIDDLE SECTION           |
| 6. STEEL BOX FRAME        | 12. BOTTOM SECTION           |

NOT TO SCALE

S1117-B-30



Precision Ladders, LLC

P.O. BOX 2279 Morristown, TN 37816-2279  
Ph: (423) 586-2265 Fax: (423) 586-2091  
www.PrecisionLadders.com

WORK ORDER: ( )	DWG. CHECK	ARCHT OR ENGR.	PROJECT	PRECISION REP
	BUILT BY:	PURCHASE ORDER	REVISION	PURCHASER
	CHECKED BY:	DRAWN BY: TMF	DATE 8/23/21	MODEL# S1
			QTY.	SERIAL#