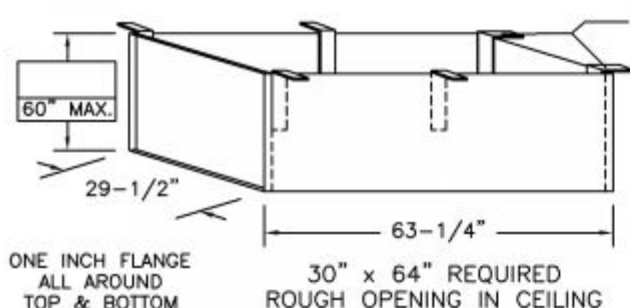


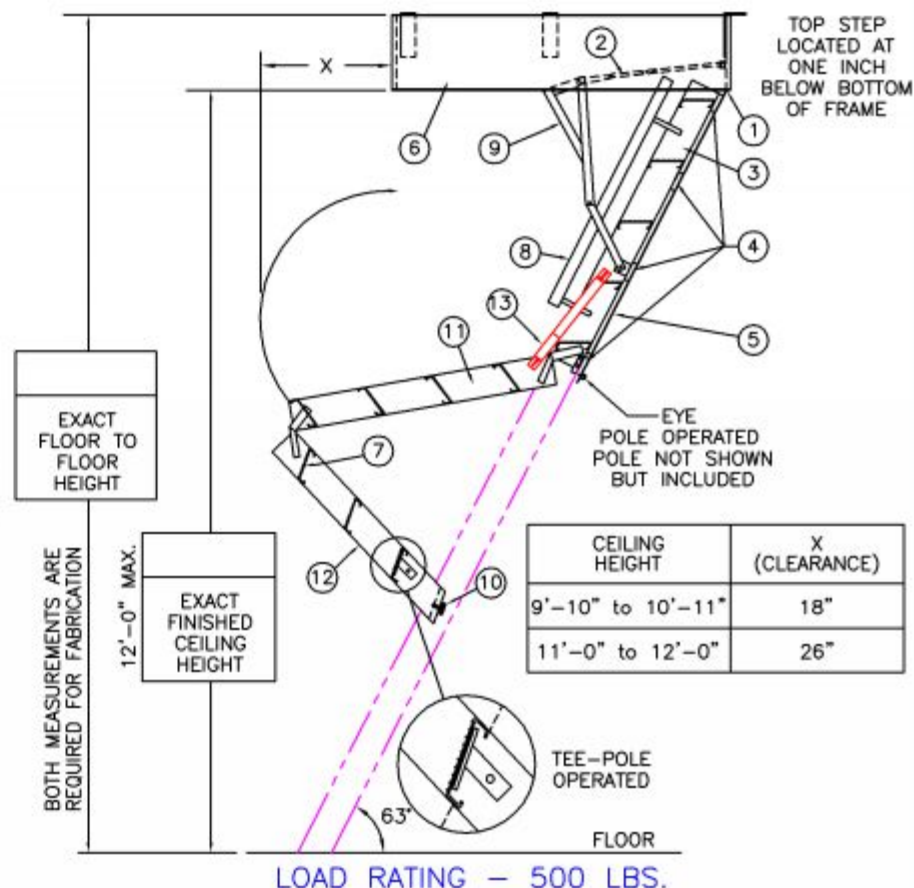
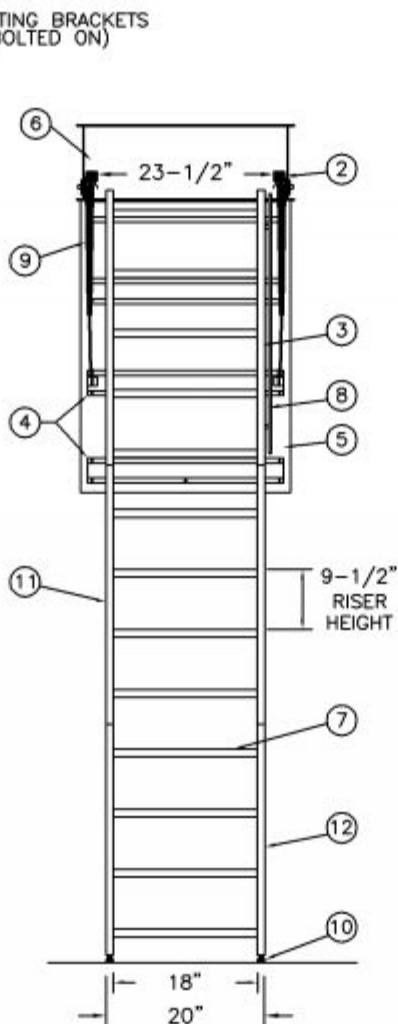
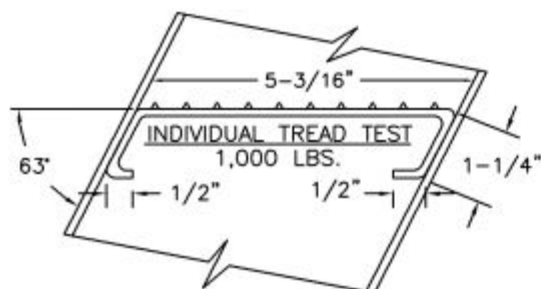
SUPER SIMPLEX DISAPPEARING STAIRWAY WITH NON-RATED ALUMINUM DOOR

(USE THIS DRAWING FOR CEILING HEIGHTS BETWEEN 9'-10" TO 12'-0")



STANDARD BOX FRAME FABRICATED FROM 1/8" STEEL

THIS DRAWING ACCOMMODATES FRAME DEPTHS
FROM 6" TO 11".



NOTES

IF FLOOR ABOVE IS MORE THAN 12" ABOVE CEILING LINE,
63 DEGREE ANGLE FRAME IS RECOMMENDED.

DIMENSIONS ON THIS DRAWING PERTAIN ONLY TO CEILING
HEIGHTS BETWEEN 9'-10" AND 12'-0" WITH LESS
THAN A 12" FRAME.

SHIPS COMPLETELY ASSEMBLED AS ONE UNIT.

MANUFACTURER RECOMMENDS THAT 2 PEOPLE OPEN/CLOSE
UNITS INSTALLED IN CEILINGS 11' AND OVER.

LADDER LEGEND

1. STEEL PIANO DOOR HINGE
2. DOUBLE SPRING ACTION
3. SIDE RUNNER 5" ALUM.
4. BATTEN 1/8" ALUM.
5. DOOR PANEL 1/8" ALUM.
6. STEEL BOX FRAME
7. TREAD (SERRATED ALUM.)
8. HANDRAIL RIGHT SIDE ONLY
9. EXTRA HEAVY OPERATING ARM
10. ADJUSTABLE FOOT
11. MIDDLE SECTION
12. BOTTOM SECTION
13. FOLD-ASSIST

NOT TO SCALE

S1144-B-30



Precision Ladders, LLC
P.O. BOX 2279 Morristown, TN 37816-2279
Ph: (423) 586-2265 Fax: (423) 586-2091
www.PrecisionLadders.com

WORK ORDER: ()	DWG. CHECK	ARCHT OR ENG'R.	PROJECT	PRECISION REP
	BUILT BY:	PURCHASE ORDER	WORK ORDER	PURCHASER
	CHECKED BY:	DRAWN BY: TMF	DATE 8/23/21	MODEL# S1
				QTY.