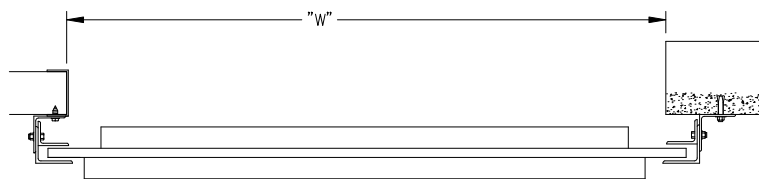
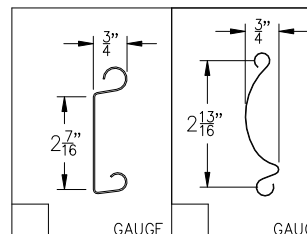


ELEVATION

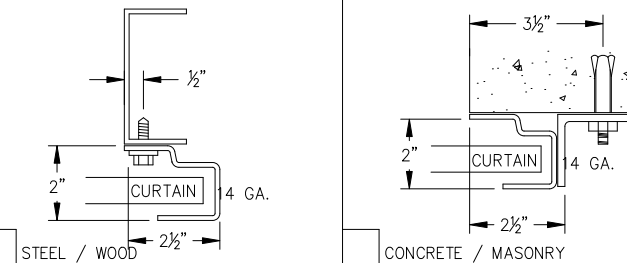
SECTION-A-A



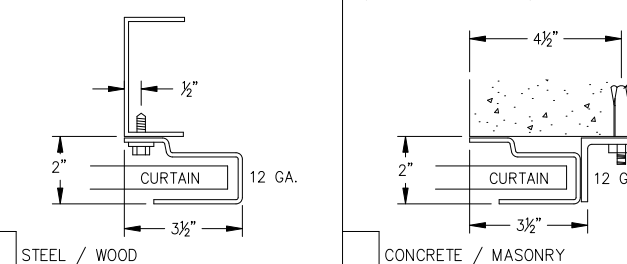
PLAN VIEW



GUIDE DETAIL (NON-WINDLOCK)



GUIDE DETAIL (NON-WINDLOCK)



SIDEROOM REQUIREMENTS (CHOOSE TYPE OF OPERATION) HEADROOM REQUIREMENTS (SEE ELEVATION)

	ROPE PULL	CHAIN HOIST	MOTOR OPERATION	HEIGHT	"X"	"V"
*A-1	6"	10"	9"	UP TO 8'-0"	20"	20"
*A-2	6"	6"	6"	UP TO 10'-0"	21"	21"
				OVER 10'-0"	23"	23"

* NOTE: ALL DOORS GREATER THAN OR EQUAL TO 14' WIDE A-1 AND A-2 = 7" MINIMUM

* NOTE: UPGRADE TO STRUCTURAL STEEL GUIDES A-1 AND A-2 = 7" MINIMUM

* NOTE: ALL DIMENSIONS ON CHART BASED ON INSIDE FACING OUT

GENERAL NOTES

SLATS/HOOD: SELECT FINISH OPTION BELOW:

- ☐ GALVANIZED ONLY
- ☐ GRAY POLYESTER TOP COAT
- ☐ WHITE POLYESTER TOP COAT

OTHER SURFACES:

- ☐ SHOP COAT BLACK PRIMER

OPERATION:

- ☐ RIGHT HAND SHOWN, LEFT HAND OPPOSITE

MRK.	QTY.	OPENING SIZE		OPERATION	R.H.	OPTION	PROJECT:	ARCHITECT:	CONTRACTOR:	DISTRIBUTOR:	DATE:	SHEET:	OF:	BY:	REF.#
		WIDTH "W"	HEIGHT "H"												

Richards-Wilcox **ROLLTITE**
Garage Doors
5100 Timberlea Boulevard, Mississauga, ON Canada L4W 2S5
1-800-667-1572 • www.rwddoors.com

Richards-Wilcox is not responsible for the use of improper installation procedures, structural supports as well as field inspection prior to manufacturing and installation.

APPROVAL SIGNATURE: _____ DATE: _____

300 SERIES-COMMERCIAL SLAT DOOR (CHAIN HOIST)