

## GENERAL

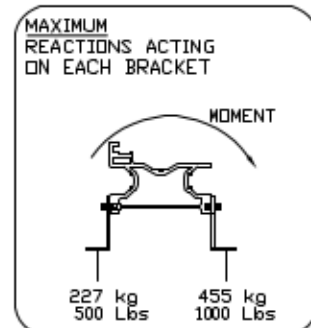
CLASSIFICATION: STAIR LIFT  
MODEL: SL1000  
CAPACITY: 158 kg [350 Lb]  
SPEED: 0.1 m/sec [20'/min]  
POWER SUPPLY: 110V,15A,60Hz,SINGLE PHASE  
MOTOR: 1/2 HP-24 VDC / 110V AC CHARGER  
DRIVE SYSTEM: RACK AND PINION  
CONTROLLER  
MODEL: LUT125  
TYPE: CPFS  
c UL us#: 100556887MTL-002  
CONTROL VOLTS: 24VDC  
MFR: CONTROLLED SPEED ENGINEERING LTD

## SPECIFICATIONS

ANGLE OF STAIRCASE: 25° TO 45°  
LENGTH OF STAIRWAY: MAX 384"  
LOCATION: INDOOR  
SEAT COVERING: VINYL PUBLIC PACKAGE:  
COLOR: BEIGE  
CALL STATION: A REMOTE FOR RESIDENTIAL

## ANCHORING

WOODEN THREAD:  
ANCHOR EACH BRACKET SET USING  
A MINIMUM OF 4X Ø1/4 X 2"  
WOOD SCREW  
REINFORCED CONCRETE  
ANCHOR EACH BRACKET SET USING  
A MINIMUM OF 4X SLEEVE ANCHORS 1/4-2"  
METAL PLATE / BLOCK  
ANCHOR EACH BRACKET SET USING  
A MINIMUM OF 4X TRHU BOLT 1/4"  
BRACKET POSITION:  
WITHIN 18 INCHES [457] OF EACH END  
OF EACH SECTION OF TRACK  
IN THE CENTER OF EVERY SECTION  
OF TRACK LONGER THAN 4 FEET  
SUPPORT LOAD DIAGRAM

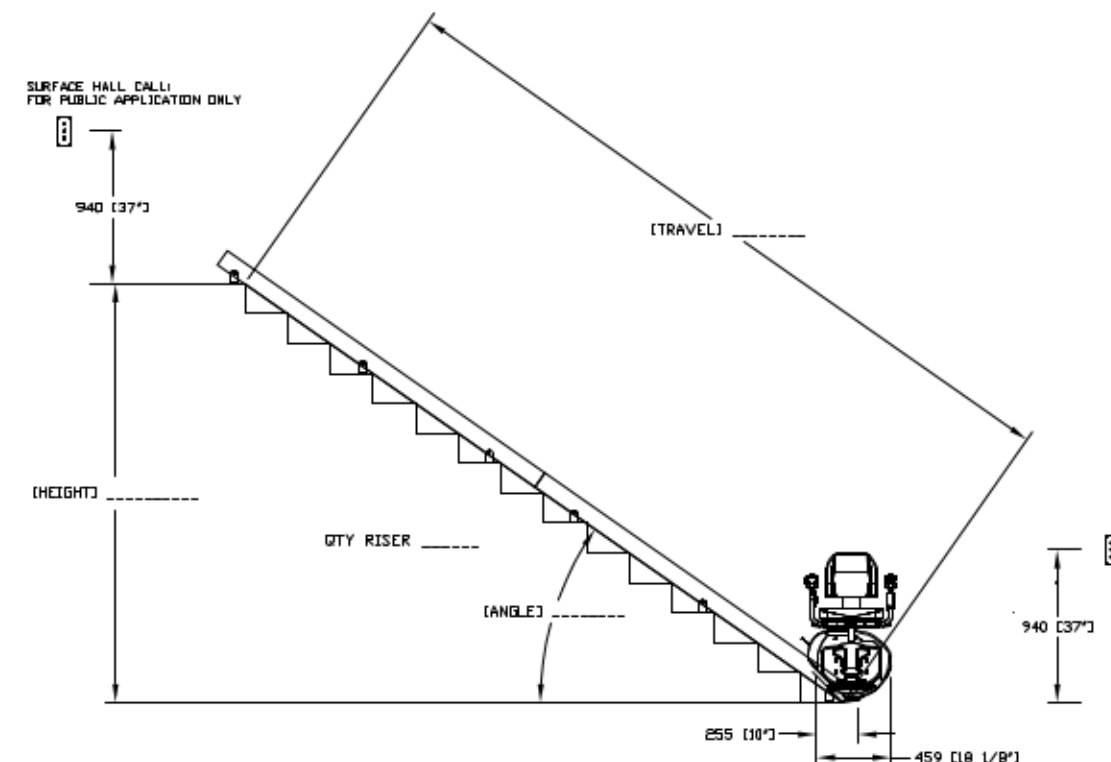
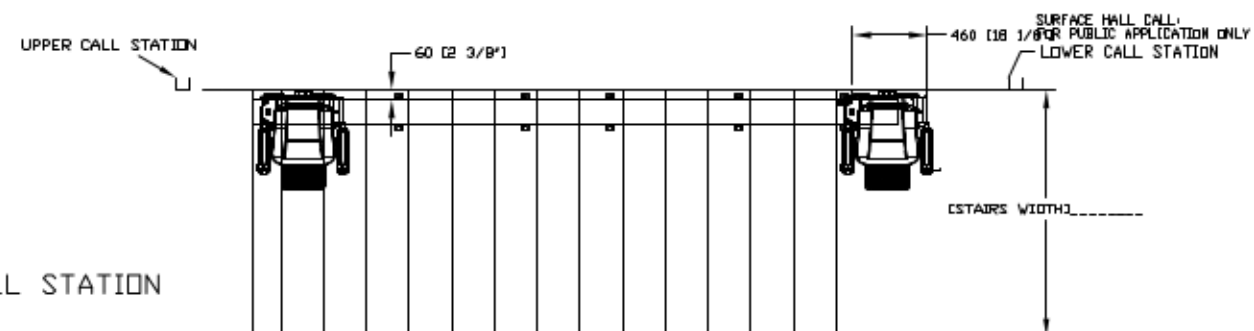
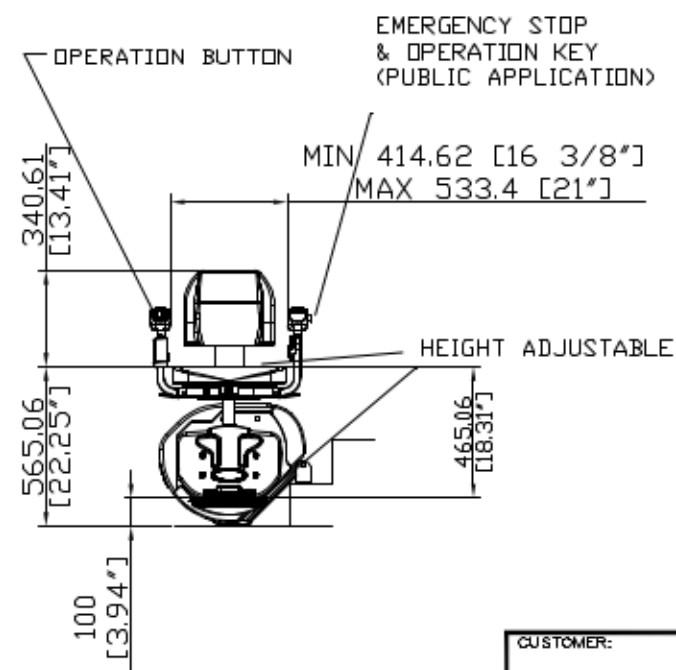
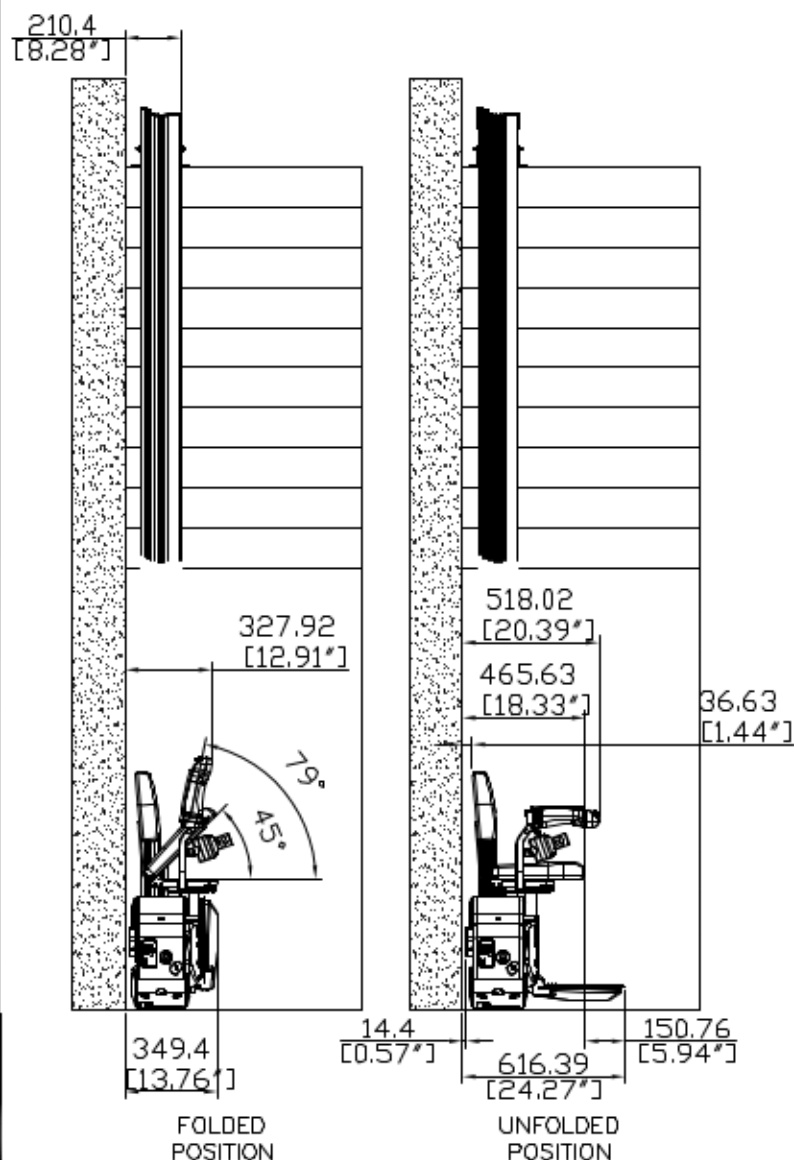


## PUBLIC PACKAGE INCLUDES:

- KEYED SURFACE MOUNT CALL STATION
- OVERSPEED GOVERNOR
- EMERGENCY STOP WITH ALARM
- IN USE LIGHT AND ALARM (ONTARIO ONLY)
- 2252 ON/OFF KEY
- FOLDING ARM SWITCHES

## OPTIONS

SIDE OF INSTALLATION: LEFT ☐ RIGHT ☐  
QTY OF RAIL SECTION: \_\_\_\_\_ (94" EACH)  
PUBLIC PACKAGE: YES ☐



RH SHOWN

CUSTOMER:	DATE:	Part No.	SL1000
PROJECT:	REVISION DATE:	Variant No.	N/A
ADDRESS:	COMPLETED BY:	savarria	
	ALEX B	JOB No.	SHEET No.
			1 OF 1