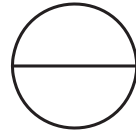


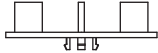


National Distribution Tel: 213-550-3803
Toll Free: 888-550-3803 Fax: 213-380-5561

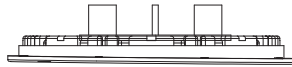


STAK-CAP™ & UNI-JUST™ PEDESTALS

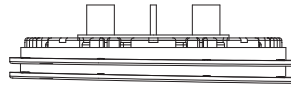
SAMPLE PEDESTAL CONFIGURATION & COMBINATION
COMPENSATION FROM 1/2" TO 36" HIGH & 0% TO 4% SLOPE



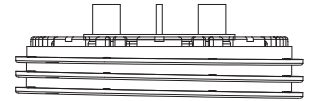
SPACER
FIXED HEIGHT 1/8"



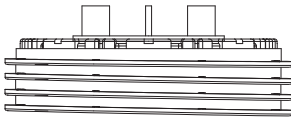
STAK-CAP™
HEIGHT 3/8" SLOPE 1% Max



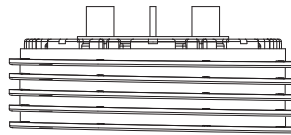
STAK-CAP™ X2
HEIGHT 1" SLOPE 2% Max



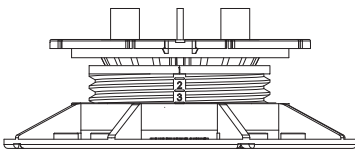
STAK-CAP™ X3
HEIGHT 1-3/8" SLOPE 3% Max



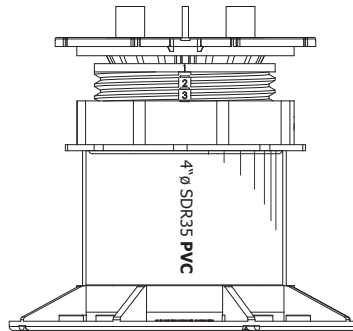
STAK-CAP™ X4
HEIGHT 1-7/8" SLOPE 4% Max



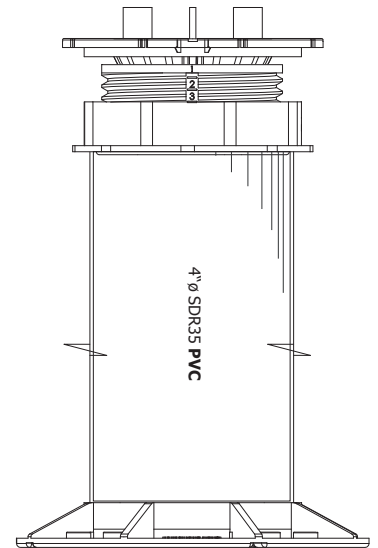
STAK-CAP™ X5
HEIGHT 2-1/4" SLOPE 5% Max



UNI-JUST™ w/o PVC PIPE
HEIGHT 2-1/4" TO 3"
SLOPE 0% TO 4%



UNI-JUST™ w/ PVC PIPE
HEIGHT 3" TO 3-3/4"
SLOPE 0% TO 4%



UNI-JUST™ w/ PVC PIPE
HEIGHT "VARIABLE" MAX 36"
SLOPE 0% TO 4%

GENERAL NOTES: APPLY TO ALL OF THE ABOVE PRODUCTS

1. INSTALLATION MUST BE COMPLETED IN ACCORDANCE WITH TILE TECH INC PRODUCT SPECIFICATIONS.
2. DRAWING NOT TO SCALE.
3. USE OF BUFFER PADS IS MANDATORY.
4. CONTRACTOR'S NOTE: FOR PRODUCT AND COMPANY INFORMATION VISIT www.TILETECHPAVERS.com