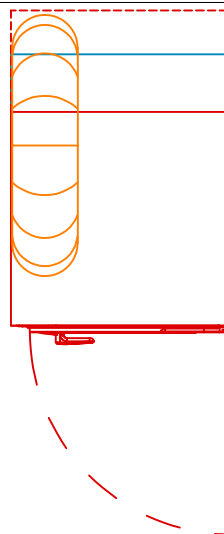
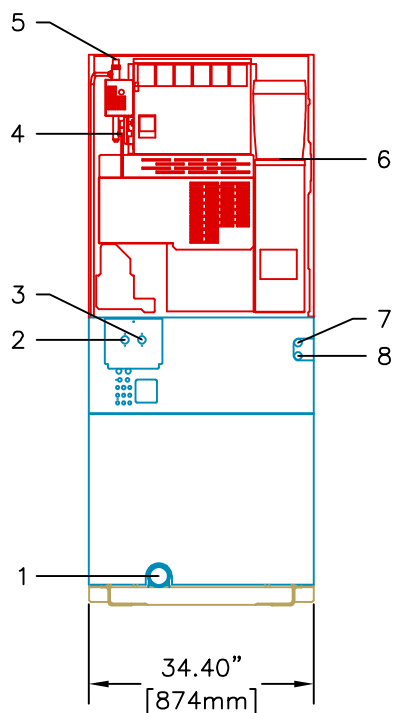


LEGEND:

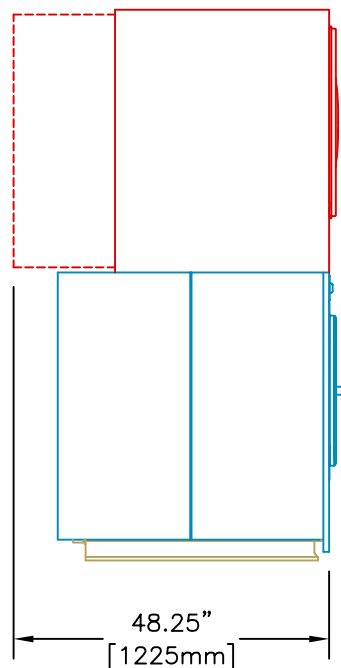
- | | |
|-------------------------|-----------------------|
| 1: 3" DRAIN OUTLET | 6: 10" EXHAUST OUTLET |
| 2: 1.2" HOT FILL VALVE | 7: 1.313" ELECTRICAL |
| 3: 1.2" COLD FILL VALVE | 8: 1.062" ELECTRICAL |
| 4: 0.875" ELECTRICAL | |
| 5: 1/2 NPT GAS INLET | |



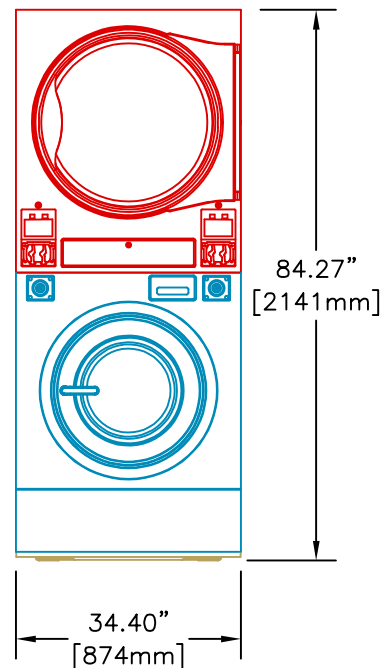
PLAN VIEW



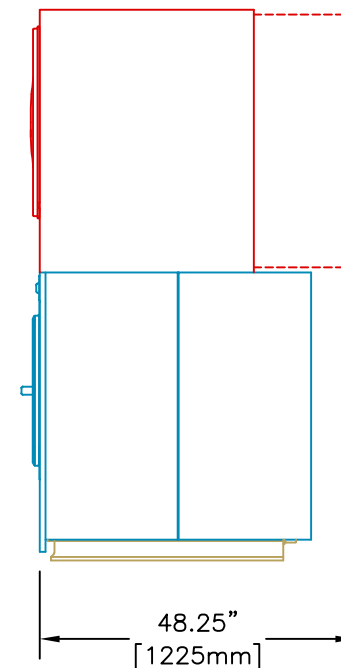
REAR VIEW



LEFT SIDE VIEW



FRONT VIEW



RIGHT SIDE VIEW

**50 LB. STACK WASHER-EXTRACTOR
/ TUMBLE DRYER (UST50)**



Equipment specifications are subject to change without notice. Please use this drawing along with the installation manuals for updated equipment installation requirements.

| | | |
|----------|-------------|-----------|
| | | |
| KRP | CAD BLOCK | 13-Apr-22 |
| Drawn by | Description | Date |