

# MODELS LC-12 & LC-12-3SA

## 12,000 LB. CLEAR FLOOR 2 POST LIFT

*The lift that fits where others won't*

**LOW CEILING/LOW CLEARANCE**



**Also available with 3 stage swing arms for all of your lifting needs!**



TO MEET THE ONE AND ONLY NATIONAL STANDARD FOR VEHICLE LIFTS

### THE LIFT YOU CAN'T WEAR OUT



*Americas Best Lift Investment...*

Still proudly designed, welded and manufactured in the U.S.A.



# MOHAWK LC-12 & LC-12-3SA LOW CEILING LIFTS

## HEAVY DUTY LIFTS FOR... HEAVY DUTY SERVICE

### MOHAWK DESIGN

- Mohawk columns are constructed of  $\frac{3}{4}$ " thick forklift masts, for a **lifetime** of trouble-free service.
- Each Mohawk carriage rolls on 8 double-sealed, self-lubricating, steel **ball bearing rollers** (NOT plastic sliders).
- Two 4" heavy duty cylinders make for safer, steadier lifting than single cylinder lifts or lift brands with tiny cylinders.
- Easily **adjustable** overhead stainless steel hydraulic lines can be set at **any** height (or routed in floor) to accommodate all tall trucks and vans.
- **Low profile** 5" (4½" with 3 stage arms) swing arms fit under most passenger cars.
- Equipped with Mohawk's 5", 7½" and 10" stackable lift adaptor pads or optional height adjustable screw pads.
- Available with optional lower height three stage swing arms that retract 2" (1" each side) shorter and reach 10" longer for varied fleets.



**LC-12-3SA SHOWN WITH IN-FLOOR HYDRAULIC LINES**



▲ Two post lifts offer FULL unobstructed under vehicle access for all repairs, take up minimal bay space and leaves wheels hanging free for tire, brake or any other necessary repairs.

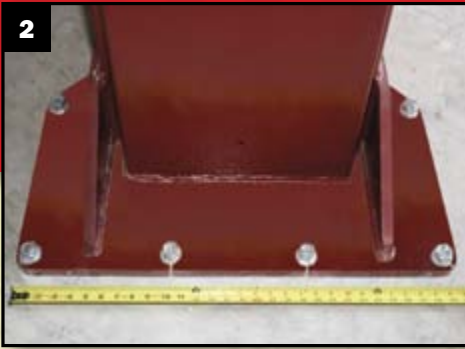
### MOHAWK PATENTED INDUSTRY LEADING SAFETY SYSTEMS

- Mohawk lifts feature **all position** mechanical safety locks in both columns, **starting at the ground**, to full lifting height.
- Patented **infinite position**, internal hydraulic safeties backed by pressure compensated flow controls and velocity fuse valving.
- Swing arm restraints automatically engage upon lifting and automatically disengage when the vehicle has been fully lowered.

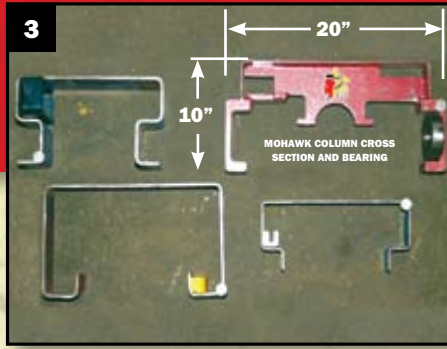
- The best, and most inclusive warranty in the lift business; 25 years structural, 10 year mechanical, plus limited lifetime cylinder seal warranty. **Mohawk builds the best lifts, with the best warranty.**
- Lease/purchase plans available for 1-5 years. Call Mohawk now!

### OPERATION

- Hydraulic fluid is pumped between the two cylinders through the overhead (or optional in-floor) stainless steel hydraulic lines. Patented hydraulic synchronization eliminates the need for restrictive height overhead covers, cables, pulleys, equalizer chains or obstructive floor plates.



▲ Mohawk's **large and stable footprint** measures 30" wide by 24" and is made of ¾" thick plate. Mohawk's large base gives stability to the lift, while distributing the load to the shop floor.

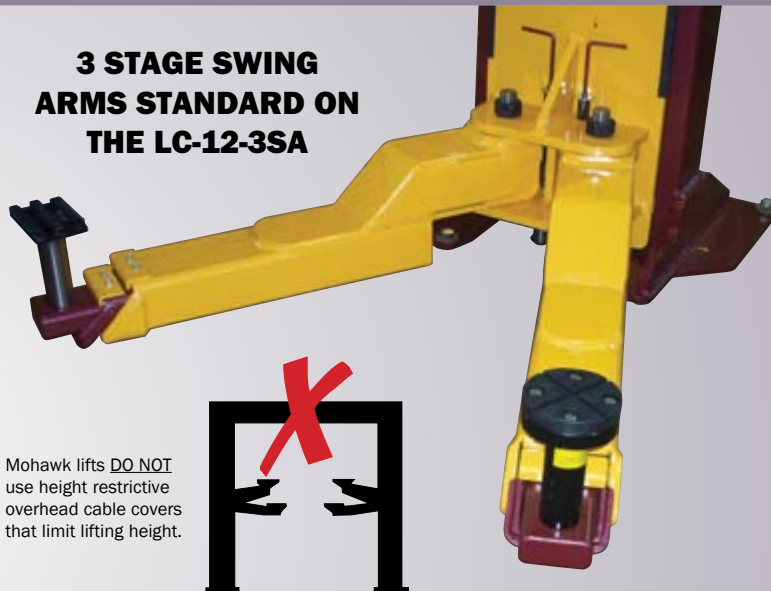


▲ Mohawk's fork lift channel & bearing (top right) VS. 3 different sheet metal columns which use plastic slides. Like your fork lifts mast, Mohawk Lifts **DON'T WEAR OUT!**

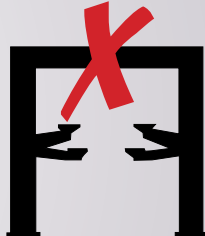


▲ Heavy duty column construction with dual cylinders, #BL-848 lifting chain (not cables) and stainless steel hydraulic lines (not rubber hoses) which will never wear.

### 3 STAGE SWING ARMS STANDARD ON THE LC-12-3SA



Mohawk lifts DO NOT use height restrictive overhead cable covers that limit lifting height.



▲ Each carriage rolls on (8) 4" double sealed, self lubricating, heavy duty ball bearing rollers for a lifetime of trouble-free service (not plastic slideblocks).



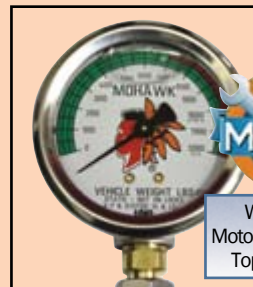
▲ **LARGE 4" CYLINDERS** equal longer seal life and lower operating pressures vs. smaller competitive cylinders.

**FORK LIFT CHANNEL** ▶ & bearing (bottom) vs. competitive columns & plastic slider (top)



▲ ALL position 1" thick mechanical locks on BOTH carriages engage the full length of travel starting at 5".

- Mohawk's LC-12 uses heavy duty leaf #BL-848 chains and twin bearings located on each of the cylinders. Chain lifting eliminates the constant stretch, fray, maintenance and replacement costs associated with cable or screw lifts.
- Mohawk carriages roll on eight double sealed, self-lubricating, steel ball bearing rollers, for a lifetime of maintenance-free operation.
- Mohawk bearings are longer lasting, with less friction and wear than competitive lifts using plastic slide blocks which need constant greasing and maintenance.
- **What other lift offers a 25 year structural warranty?**



**Safety Weight Gauge**  
to determine vehicle weight, aid vehicle diagnosis & generate repair revenue.

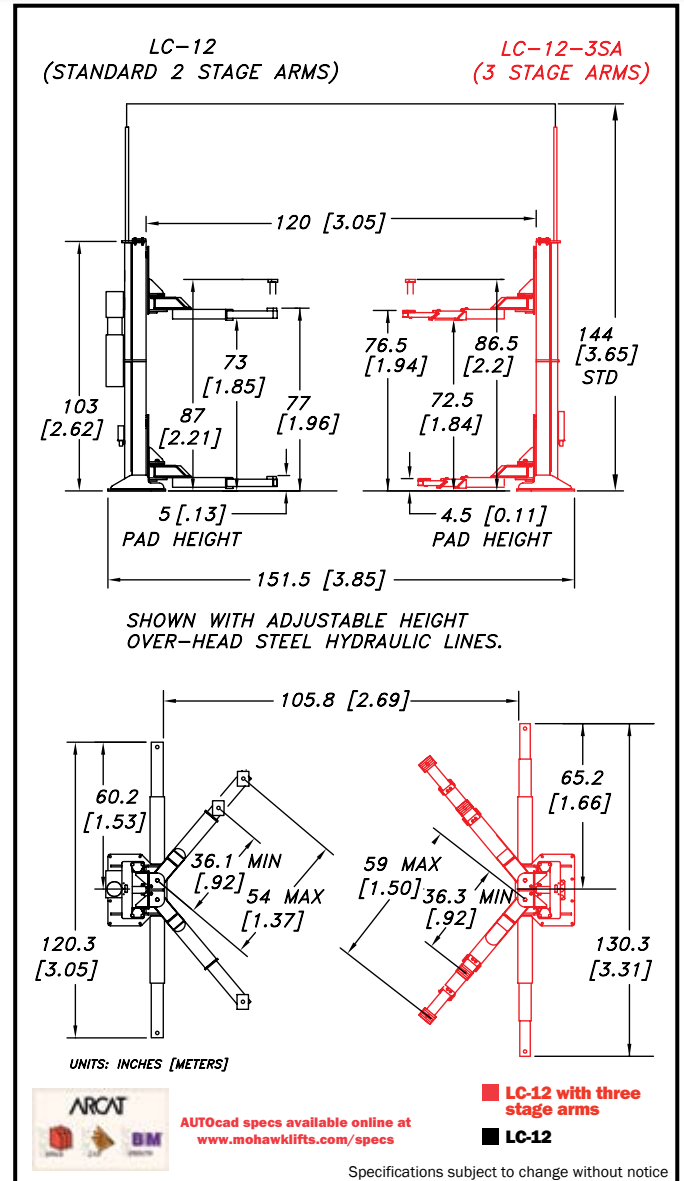


**Speedlane Adaptor**  
Slips on quickly for instant lifting without positioning swing arms yet leaves the wheels hanging free for tire and brake work.



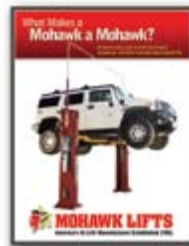
# MODEL LC-12 + LC-12-3SA SPECIFICATIONS

<b>Capacity:</b> .....	12,000 lbs. (5,443.11 kg)
<b>Lifting Speed:</b> .....	80 seconds at full load (faster with lighter vehicles)
<b>Motor Rating:</b> .....	2.5 HP/208-230V, Single-phase (3Ø optional)
<b>Synchronization:</b> .....	Hydraulic fluid displacement using no chains, cables, or overhead obstructions
<b>Arm Pad Height:</b> .....	5" (12.7 cm) min.
<b>Lifting Height:</b> .....	6' (1.83 m) under arm
<b>Arm Pad Height @ Full Rise:</b> .....	6' 5" (1.96 m)
<b>Overall Width:</b> .....	12' 7" (3.84 m) ( <b>adjustable</b> )
<b>Width Between Posts:</b> .....	10' (3.05 m) ( <b>adjustable</b> )
<b>Width Between Lifting Arms:</b> .....	8' 10" (2.69 m) ( <b>adjustable</b> )
<b>Column Height:</b> .....	8' 7" (2.62 m)
<b>Overhead Hydraulic Line Height:</b> .....	12' (3.66 m) Standard ( <b>adjustable</b> to accommodate any height ceiling or routed in-floor)
<b>Weight:</b> .....	2900 lbs. (1,315.42 kg)
<b>Concrete Floor Requirements:</b> .....	4000 psi (27579.02 kPa) mix 6½" (16.51 cm) depth
<b>Anchoring System: Included</b> .....	(16) ¾"x6" (1.9x15.2 cm) bolts
<b>Mechanical Safety Locks:</b> .....	<b>Automatic;</b> all position starting ground level
<b>Hydraulic Safety Systems:</b> .....	<b>Automatic;</b> all position
<b>Swing Arm Restraints:</b> .....	<b>Automatic</b> upon ascent
<b>Cylinders:</b> .....	2 (1 per column)
<b>Drive System:</b> .....	#BL-848 leaf chain routed over cylinder
<b>5" Frame Adaptors (stackable):</b> .....	4 included as standard equipment
<b>7½" Frame Adaptors (stackable):</b> .....	4 included as standard equipment
<b>10" Frame Adaptors (stackable):</b> .....	4 included as standard equipment
<b>Steel Carriage Bearings:</b> .....	8 per carriage, double sealed, self-lubricating
<b>Floor Access Between Posts:</b> .....	Clear and unobstructed
<b>Warranty:</b> .....	<b>25 year structural, 10 year mechanical warranty</b>



Mohawk builds the best products with the finest materials, to the highest standards. Just compare our lifts. Our staff will assist you with a fleet evaluation, design assistance and answer any technical questions you have. We invite your calls.

Mohawk lifts are manufactured in compliance with the following standards: OSHA, ALI, ANSI, ASME, AISI, ASTM, ASA, NEC, AWG, NEMA.



Scan the QR Code or Microsoft Tag to find out more about Mohawk LC-12 & LC-12-3SA Lifts



For more detailed product information read this book at [www.mohawklifts.com/wmamam](http://www.mohawklifts.com/wmamam)



[www.facebook.com/mohawklifts](http://www.facebook.com/mohawklifts)

# MOHAWK

Mohawk Resources, LTD.  
P.O. Box 110  
65 Vrooman Ave  
Amsterdam, NY 12010  
(800) 833-2006  
(518) 842-1431  
FAX: (518) 842-1289  
[www.mohawklifts.com](http://www.mohawklifts.com)



GSA contract #GS07F-7099B

AVAILABLE UNDER DISCOUNTED GOVERNMENT CONTRACT IN ALL 50 STATES



**DISTRIBUTED BY:**