

ASA



Baked Enamel
Stainless Steel
Plastic Laminate
Phenolic Core
HDPE Solid Plastic



American Sanitary Partition

ADA-COMPLIANT

Planning the Restroom

American Sanitary toilet compartments are available in many beautiful colors, all selected to give you freedom with interior design. All models are available in: Powder Coated Baked Enamel finish on galvanized bonderized steel, Stainless Steel, high pressure decorative Plastic Laminate & Phenolic Core and Solid Plastic. Color charts are available on request.

ELEVATION

PLAN

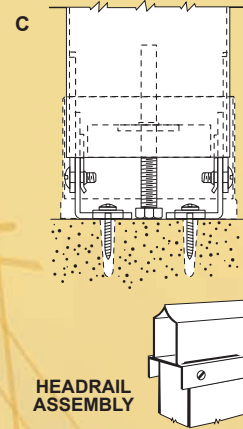
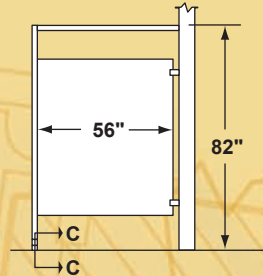
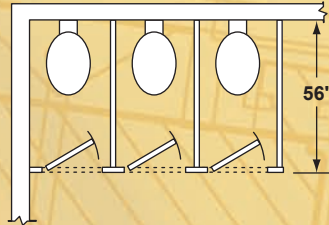
SECTION

DETAIL

FULL FLUSH



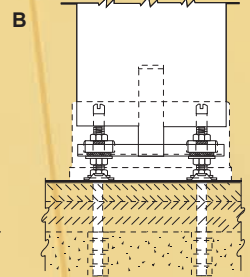
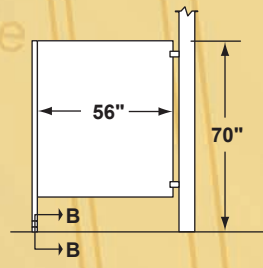
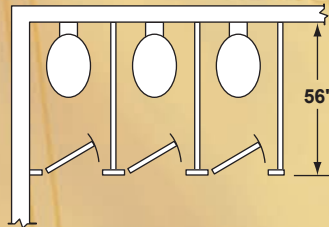
NOTE: Since this type does not require any special ceiling or floor provisions, headrail bracing will be required.



FLOOR STILE



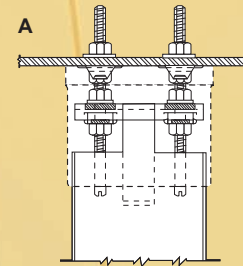
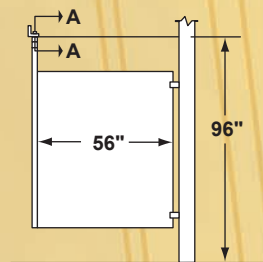
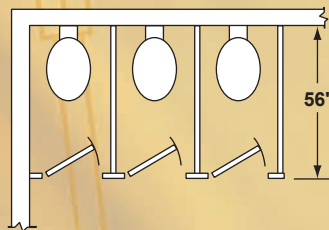
NOTE: To provide a secure fastening of stiles, a solid sub-floor not over 2" below the finish floor shall be provided by others.



CEILING STILE



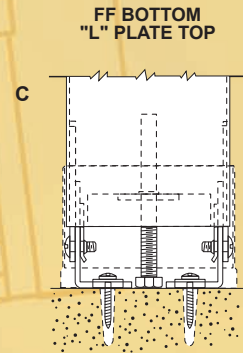
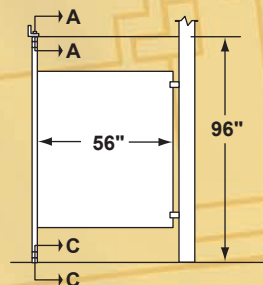
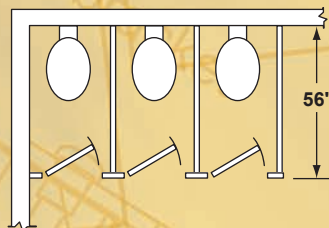
NOTE: Steel structural members required in ceiling to fasten stiles shall be provided by others.



FLOOR TO CEILING

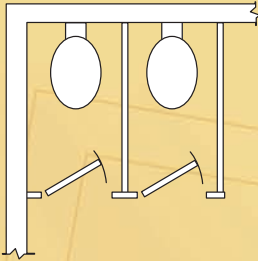


NOTE: To provide a secure fastening of stiles, steel structural members required in ceiling and a solid sub-floor not over 2" below the finish floor shall be provided by others.

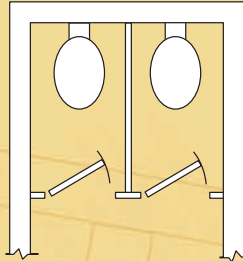


Standard Layout & Sizes

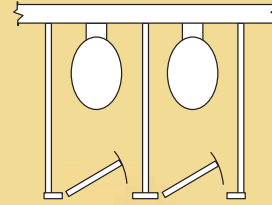
We are now able to provide prompt stock shipment on many items because of standardization of toilet room sizes and layouts. This can assure on-time completion of projects operating under a tight or limited time schedule. Many applications can be covered by the layouts detailed below. Individual type specifications are adhered to throughout.



LAYOUT IN A CORNER



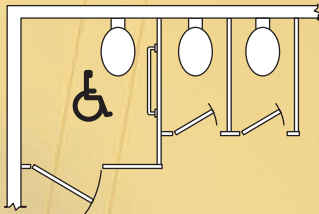
LAYOUT BETWEEN WALLS



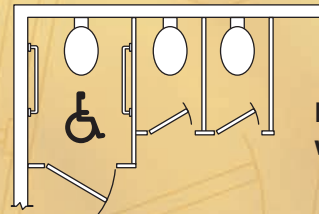
LAYOUT FREE STANDING

ADA Compatibility

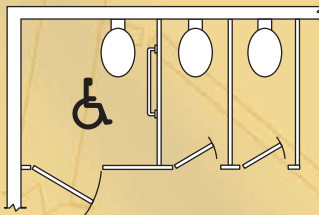
Please take note of your state, city, and country codes to comply with all ADA regulations.



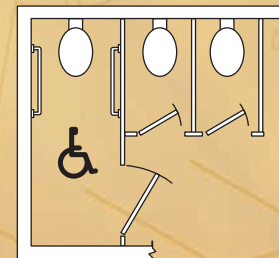
LAYOUT IN A CORNER
with stepped adjacent stalls



LAYOUT IN A CORNER
with limited space



LAYOUT IN A CORNER
with flush adjacent stalls



ALCOVE LAYOUT

LEED qualifications

American Sanitary LEED V3 2009 (July 2012)

LEED Category	Section & Points	Description	Powder Coated Steel	Stainless Steel	Phenolic (black core)	Plastic Laminate	Solid Plastic (HDPE)
Recycled Content	MR 4 (1-2)	Post Consumer Content	54%	21%	0%	0%	20%-70%
Regional Materials	MR 5 (1)	500 mi. radius of Final Manufacturing	Ocoee, FL. 34761	Ocoee, FL. 34761	Ocoee, FL. 34761	Ocoee, FL. 34761	Ocoee, FL. 34761
Rapidly Renewable Materials	MR 6 (1)	Content	2%	2%	67%	50%	
Certified Wood	MR 7 (1)	FSC - Certified	N/A	N/A	N/A	95%	N/A
Low Emitting Materials	IEQ 4.1 (1) IEQ 4.2 (1)	VOC Content of Adhesive/Paint Below Defined Limits	Adhesives - YES Paint - YES	Adhesives - YES	N/A	Adhesives - YES	N/A
	IEQ 4.4 (1)	Free of Added Urea-Formaldehyde Resins	N/A	N/A	N/A	YES	N/A
Possible Points			Up to 4	Up to 4	Up to 2	Up to 5	Up to 2

Baked Enamel Partitions

General: Toilet compartments shall be Type BE-____ (CS-Ceiling Stile; or FS-Floor Stile; or FF-Full Flush; or FC-Floor to Ceiling) as manufactured by American Sanitary Partition Corporation.

Materials: All steel shall be Galvanized and Bonderized or Galvanealed. Zinc Coating to be .00015" thick each side. Panels over 48" wide shall be 20ga. Panels 48" and smaller; and doors shall be 22ga. Headrail shall be 6063-T5 aluminum etched and anodized. FF and FC stiles shall be 20ga. CS and FS stiles shall be 18ga.

Construction: Stiles, panels and doors shall be of veneer steel construction, laminated under pressure to a honeycomb core of correct dimension producing a stile unit of not less than 1 1/4" thick and panel and door units of not less than 1" thick. The edges of the stile, panel and door sheets shall be formed to interlock with each other, producing a rigid two-piece unit. All corners shall be welded and ground smooth. Stile, panel and door units shall be reinforced internally and pre-pierced for the application of fittings and hardware. Panels shall be attached to stiles with 3 concealed tension cleats

Fittings: All wall brackets shall be cast alloy non-ferrous metal. All brackets are chrome plated and adjustable to keep panels and stiles clear from walls. Stile cover bases shall be 3" high, of No. 304 stainless steel.

Finish: A powder-coated paint over zinc-coated Bonderite-treated steel, baked on at 350°F to provide maximum protection and durability. Finish to be one color or one combination of two-colors selected from American Sanitary's standard color chart; color charts are available on request.

Hardware: Doors shall be equipped with "Trouble-Proof" hinge set. Each hinge set shall consist of cast non-ferrous metal. All hinge brackets are chrome plated. The top pivot shall be recessed into the edge of the door 2 1/2" below the top. Heavy steel pin operating with "Zytel" nylon cam permits the setting of the door at any desired position when door is not latched. Slide latch, combination bumper keepers and coat hooks shall be of cast metal, which are chrome plated. All door hardware shall be thru-bolted. Theft-proof screws and fasteners shall be provided for all hardware.

Additional Cost Options: Hinges; Stainless Steel "Trouble-Proof" or Continuous (Gravity or 20°), Aluminum Continuous (Gravity or Spring Loaded), Brackets; Stainless Steel Stirrup or Continuous, Aluminum Continuous, Doors; Concealed Latch.

Stainless Steel Partitions

General: Toilet compartments shall be Type SS-____ (CS-Ceiling Stile; or FS-Floor Stile; or FF-Full Flush; or FC-Floor to Ceiling) as manufactured by American Sanitary Partition Corporation.

Materials: All steel shall be stainless steel type #304 - #4 finish. Panels over 48" wide shall be 20ga. Panels 48" and smaller; and doors shall be 22ga. FF and FC stiles shall be 20ga. CS and FS stiles shall be 18ga.

Construction: Stiles, panels and doors shall be of stainless steel construction, laminated under pressure to a honeycomb core of correct dimension producing a stile unit of not less than 1 1/4" thick and panel and door units of not less than 1" thick. The edges of the stile, panel and door sheets shall be formed to interlock with each other, producing a rigid two-piece unit. All corners shall be welded and ground smooth. Stile, panel and door units shall be reinforced internally and pre-pierced for the application of fittings and hardware. Panels shall be attached to stiles with 3 concealed tension cleats.

Fittings: All fittings shall be stainless steel with a #4 finish and adjustable to keep stiles and panels clear from walls. Stile cover bases shall be 3" high, of No. 304 stainless steel.

Hardware: Doors shall be equipped with "Trouble-Proof" hinge set. Each hinge set shall consist of cast non-ferrous metal. All hinge brackets are chrome plated. The top pivot shall be recessed into the edge of the door 2 1/2" below the top. Heavy steel pin operating with "Zytel" nylon cam permits the setting of the door at any desired position when door is not latched. Slide latch, combination bumper keepers and coat hooks shall be cast metal, which are chrome plated. All door hardware shall be thru-bolted. Theft-proof screws and fasteners shall be provided for all hardware.

Additional Cost Options: Hinges; Stainless Steel "Trouble-Proof" or Continuous (Gravity or 20°), Aluminum Continuous (Gravity or Spring Loaded), Brackets; Stainless Steel Stirrup or Continuous Stainless Steel, Doors; Concealed Latch.

Stock Shipment

AVAILABILITY

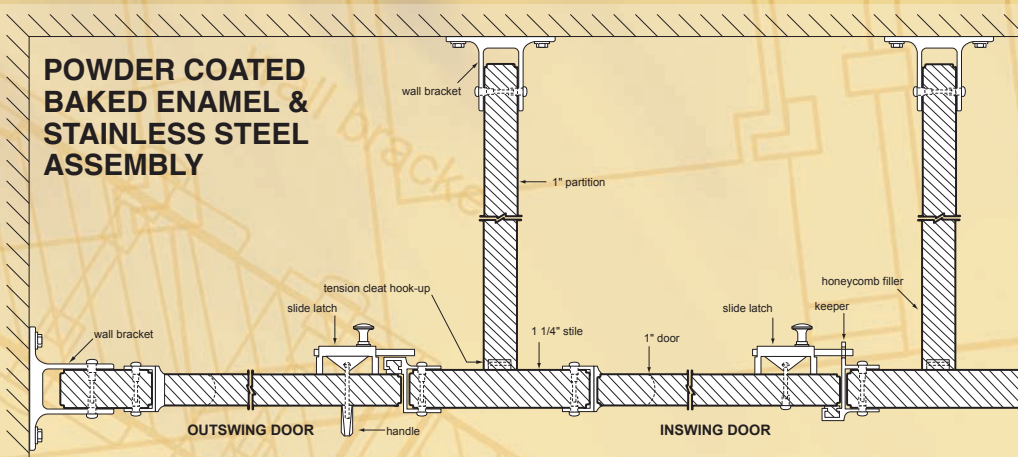
Immediate shipment of many items can be obtained due to standardization of toilet room sizes and general layouts. Experienced representatives throughout the country are at your disposal for consultation on preliminary estimates, layouts and any other inquiries you may have. A group of these representatives carry inventory for immediate shipment.

A complete list of items ready for stock shipment can be found to the right. Door availability: Baked Enamel Standard Slide Latch available, 20 1/2"-35 1/2" (1" increments). Stainless Steel Standard Slide Latch available, 23 1/2" & 35 1/2" (primarily).

POWDER COATED BAKED ENAMEL & STAINLESS STEEL STOCK REFERENCE

PANEL COMPARTMENT DEPTH	PANEL COMPARTMENT SIZE	OTHER STOCK PANELS
48"	46 3/8"	10 3/8"
52"	50 3/8"	12 3/8"
54"	52 3/8"	16 3/8"
56"	54 3/8"	22 3/8"
57"	55 3/8"	28 3/8"
60"	58 3/8"	30 3/8"
61"	59 3/8"	32 3/8"
66"	64 3/8"	34 3/8"
72"	70 3/8"	40 3/8"
78"	76 3/8"	

Add 1" for wall clearance.



Plastic Laminate Partitions



General: Toilet compartments shall be Type PL-____ (CS-Ceiling Stile; or FS-Floor Stile; or FF-Full Flush; or FC-Floor to Ceiling) as manufactured by American Sanitary Partition Corporation.

Materials: Panels and doors shall be externally covered with high pressure decorative laminated plastic, all edges bound, the above bonded to industrial grade 53lb. particle board core. Stiles shall be of veneer steel construction (**NO PARTICLE BOARD**, similar to our Baked Enamel construction) laminated to a honeycomb core and externally covered with high-pressure decorative plastic. **This construction meets or exceeds any steel core and particle board specification.**

Construction: Stiles, panels and doors shall be laminated to a correct dimension producing a stile unit of not less than 1 1/4" thick and a panel and door unit of not less than 1" thick. Stiles, panels and door units shall be pre-pierced for application of fittings and hardware.

Fittings: All wall brackets shall be Zamac cast alloy non-ferrous metal. All brackets are chrome plated and adjustable to keep panels and stiles clear from walls. Stile cover bases shall be 3" high, of No. 304 stainless steel.

Finish: Color shall be one color or one combination of two colors selected, but not limited to American Sanitary's standard color chart; color charts are available on request.

Hardware: Doors shall be equipped with "Trouble-Proof" hinge set. Each hinge set shall consist of cast non-ferrous metal. All hinge brackets are chrome plated. The top pivot shall be recessed into the edge of the door 2 1/2" below the top. Heavy steel pin operating in a "Zytel" nylon cam which permits setting of the door at any desired position when door is not latched. Slide latch, combination bumper keepers and coat hooks shall be of cast metal which is chrome plated. All door hardware shall be through bolted. Theft-proof screws and fasteners shall be provided for all hardware.

Additional Cost Options: Materials; No Added Urea Formaldehyde Free Particle Board, Plywood core panels and doors, Hinges; Stainless Steel "Trouble-Proof" or Continuous (Gravity or 20°), Aluminum Continuous (Gravity or Spring Loaded), Brackets; Stainless Steel Stirrup or Continuous, Aluminum Continuous.

Phenolic Core Partitions



General: Toilet compartments shall be Type PH-____ (CS-Ceiling Stile; or FS-Floor Stile; or FF-Full Flush; or FC-Floor to Ceiling) as manufactured by American Sanitary Partition Corporation.

Materials: Panels, doors and pilasters shall be made of multiples layers of phenol resin impregnated kraft papers compressed under heat and pressure, the phenolic component is decoratively faced as an integral part of the core.

Construction: Stiles and doors shall be made of phenolic core to a correct dimension producing a stile unit of not less than 3/4" thick and door unit of not less than 3/4" thick. Panels shall be 1/2" thick units. Other thickness configurations are available for an additional cost.

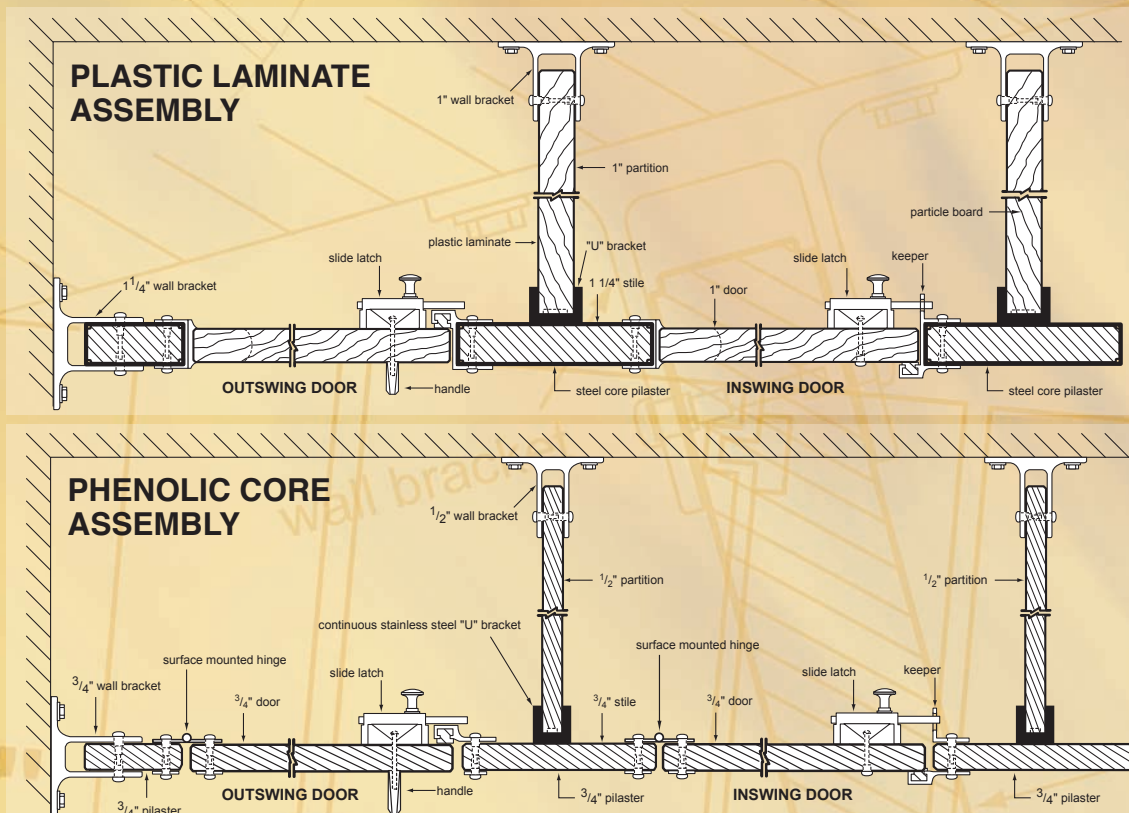
Fittings: All fittings shall be stainless steel with a #4 finish and adjustable to keep stiles and panels clear from walls. Stile cover bases shall be 3 1/2" high, of No. 304 stainless steel.

Finish: Color shall be one color selection, but not limited to American Sanitary's standard color chart; use Plastic Laminate color selector. Color charts are available on request.

Hardware: Doors shall be equipped with a stainless steel vault ball bearing hinge set. Each hinge set shall consist of stainless steel with a #4 finish. Slide latch, combination bumper keeper, and coat hooks shall be stainless steel with a #4 finish. All hardware except coat hooks shall be through bolted. Theft-proof screws and fasteners shall be provided for all hardware.

Additional Cost Options: Hinges; Continuous Stainless Steel (Gravity or 20°), Continuous Aluminum (Gravity or Spring Loaded), Brackets; Stainless Steel Continuous, Aluminum Continuous.

Availability: Please note that ASPC Phenolic is on a custom order basis, allowing the selection of 350+ colors to choose from, without an additional charge. (1) Color selection per job. Call factory for multiple color jobs.



Solid Plastic HDPE Partitions



General: Toilet compartments shall be Type SP-____ (CS-Ceiling Stile; or FS-Floor Stile; or FF-Full Flush; or FC-Floor to Ceiling) as manufactured by American Sanitary Partition Corporation.

Materials: All material shall have a **Certified "Class B" fire rating** (standard). Pilasters, doors, and panels shall be 1" thick with homogenous color throughout, constructed from high density poly-ethylene (HDPE) resins. Partitions shall be fabricated from polymer resins, compounded under high pressure, forming a single component section which is waterproof, non-absorbent and has a self lubricating surface that resists markings from pens, pencils, markers and other writing instruments.

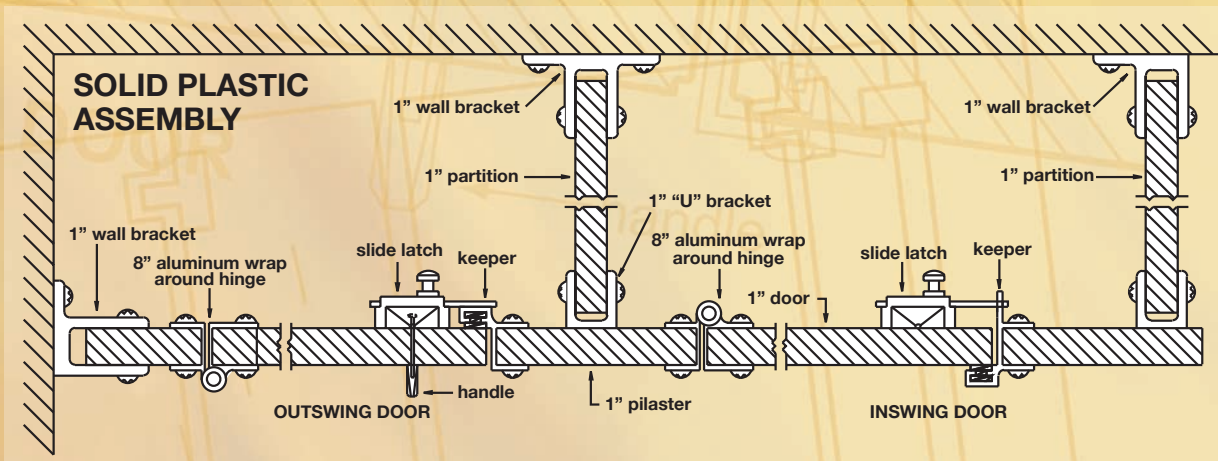
Construction: Stiles, doors and pilasters shall be made of high density poly-ethylene to a correct dimension producing a stile unit, door, and panel unit of not less than 1" thick. Doors and panels are to be 55" high. Full flush pilasters will be 84" tall with headrail. Floor to ceiling pilasters will vary depending on ceiling heights (120" maximum).

Fittings: All fittings shall be aluminum stirrup brackets (standard) and adjustable to keep stiles and panels clear from walls. Stile cover bases shall be 4" high, 18ga. Stainless Steel (standard). Poly bases will not be available for CS or FC.

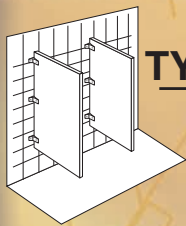
Finish: Color shall be one color or one combination of two colors selected from American Sanitary's standard color chart; color charts are available on request.

Hardware: Doors shall be equipped with heavy duty 8" aluminum wrap around hinges (2 per standard, 3 per handicap). Slide latch, combination bumper and keeper, and coat hooks shall be anodized aluminum. Theft-proof screws and fasteners shall be provided for all hardware.

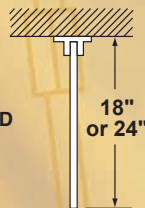
Additional Cost Options: Hinges; Stainless Steel Vault or Continuous (Gravity or 20°), Continuous Aluminum (Gravity or Spring Loaded), Brackets; Aluminum Continuous, Stainless Steel Stirrup or Continuous, Poly-Propylene Continuous; Bases; Poly-Propylene. Materials: Certified Class "A" fire rating (20 sheet minimum ≈25 stalls), call factory for pricing.



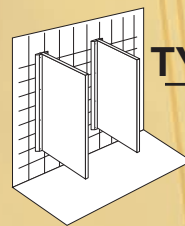
Urinal Screens



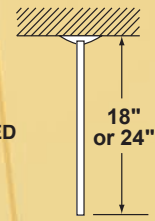
TYPE# 1
WALL HUNG
- BRACKET SUPPORTED



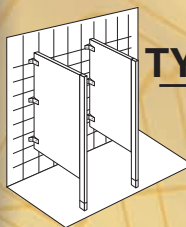
Most popular and most economical type offers clear floor area for ease of cleaning and maintenance. Panel to match material thickness and is supported by three heavy wall brackets. Each bracket is fastened to the wall with three screws and attached to the panel with two thru-bolts. Panel is reinforced with 4" wide steel blocking at each bracket location; the blocking runs entire height of panel to create a sturdy durable unit. **Availability:** Powder Coated Baked Enamel, Stainless Steel, Plastic Laminate, Phenolic Core or HDPE Solid Plastic.



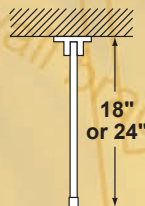
TYPE# 3
WALL HUNG
- FLANGE SUPPORTED



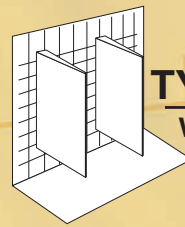
A heavy duty wall hung screen with integral flanges and continuous heavy anchor plate to support the panel. Panel is 1 1/4" thick of flush construction with a continuous flanged edge formed for attachment to the wall. The supporting wall bracket is also continuous and fabricated of heavy steel and is concealed by the panel flange when installed. **Available in Powder Coated Baked Enamel or #304 Stainless Steel.** For a more economical application, this same design can be accomplished with a continuous bracket on all materials.



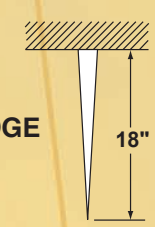
TYPE# 2
WALL HUNG
- POST SUPPORTED



This type offers all the features of the #1 Type urinal screen and then adds the extra floor support that is necessary in heavily used locations. Panel to match material thickness and supported at the wall with two heavy wall brackets. The support to the floor is an 1 1/4" square aluminum post which is anchored to the floor with a floor shoe, with two fastenings to the floor, spaced 3" apart which offer a sturdy, rigid installation. **Availability:** Powder Coated Baked Enamel, Stainless Steel, Plastic Laminate, Phenolic Core or HDPE Solid Plastic.

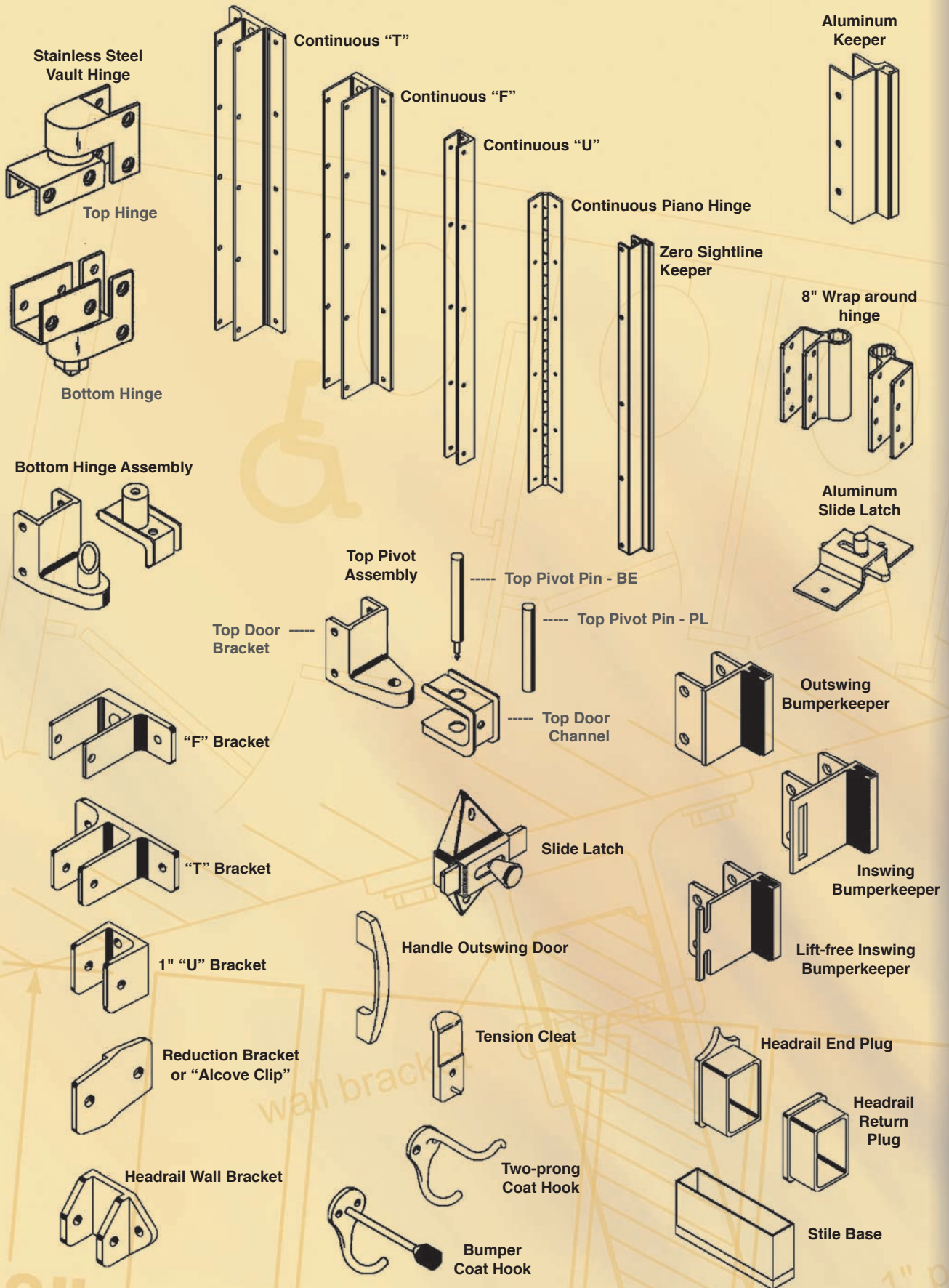


TYPE# 4
WALL HUNG - WEDGE



This modern design offers distinctive appearance. There are no exposed wall brackets or screws. Panel body is fabricated on one piece of 18ga steel. The top and bottom are made of 20ga steel and electrically welded to the panel body to form a single unit. The interior surfaces are treated with a sound deadening material. The panel body is mounted on a full height steel bracket, fastened to the wall with five fasteners. **Availability:** Stainless Steel, Powder Coated Baked Enamel or Plastic Laminate (plywood core).

Standard Hardware & Accessories

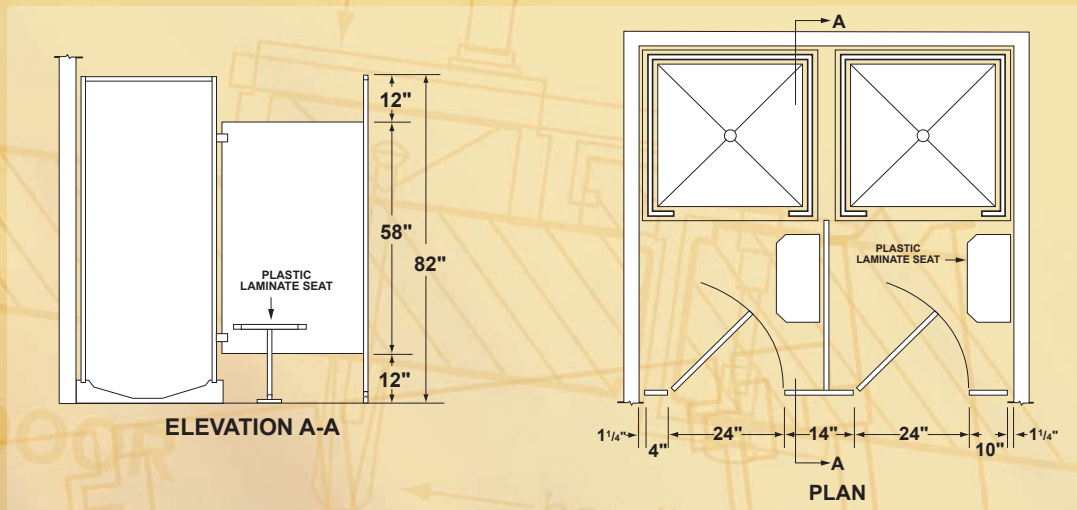


58"

1" pa

Cabinet Showers & Dressing Compartments

Full Flush Cabinet Showers with Terrazzo Receptors are furnished in a design similar to our toilet compartments. Watertight, leak-proof, double wall insulated unit 1" thick, offers maximum durability. Available in sizes 32"x32"x82" & 36"x36"x82". Shipped knocked down; designed for speedy assembly, showers available in Powder Coated Baked Enamel, Stainless Steel (no warranty available on metal cabinets), Phenolic Core, and HDPE Solid Plastic materials. Dressing Compartments are also available in a design to match the shower cabinet. ADA Cabinet showers available in 40"x40"x82" & 36"x48"x82" (custom order).



About the Company

AMERICAN SANITARY Partition Corporation

Since 1932, American Sanitary Partition Corporation is the accepted standard among many architects and contractors across the nation. Along with toilet compartments, we also produce complete lines of shower cabinets.

American Sanitary's partitions provide the comfort and convenience that are important with today's fast-paced lifestyle.

With our many years of experience in the toilet partition industry, our products offer more advantages and beauty than any other materials used to date. Our design is developed from our metal partition line, incorporating all of the features required to produce a sound, rigid and lasting installation. The partitions are available in a wide variety of appealing colors and patterns, and will delight the architect and decorator with their beauty and durability. All models are available in powder coated baked enamel finish on galvanealed steel, stainless steel, high pressure decorative laminated plastic, phenolic core, and solid plastic.

300 Enterprise Street
P.O. Box 99
Ocoee, FL 34761
Phone: 407-656-0611
Fax: 407-656-8189
www.am-sanitary-partition.com
amersan@aol.com

