



SafetyRailCompany

Fall Protection for Life and Compliance



SRC SKYLIGHT SCREENS

SKYLIGHT FALL PROTECTION

DESCRIPTION

The SRC Skylight Screen is an OSHA compliant fall protection screen for skylights. These screens compression-fit to the aluminum frame of the skylight without any mechanical penetrations. Heavy-duty construction prevents contact with skylight lens in the event of a fall. Installation takes 30 minutes.

APPLICATIONS

Use on any domed or flat lens acrylic skylight with an aluminum frame. Sizes available up to 52" wide x 120" long.

OSHA COMPLIANCE

- Compliant with OSHA standards: (29 CFR 1910.28 & 29 CFR 1926.502)
- Models available to meet CalOSHA Title 8, Chapter 7, Article 2, 3212(e)(1)
- Independently tested by a nationally accredited engineering lab - documentation available upon request

FEATURES

- Heavy-duty protection prevents contact with skylight lens in event of fall
- Non-penetrating design will not compromise building envelope
- No welding or drilling required for installation
- American Welding Society Certified (AWS D1.1 & D1.3)
- 100% Made in USA
- Galvanized finish screen with aluminum frame
- Use on skylights with standard curb detail

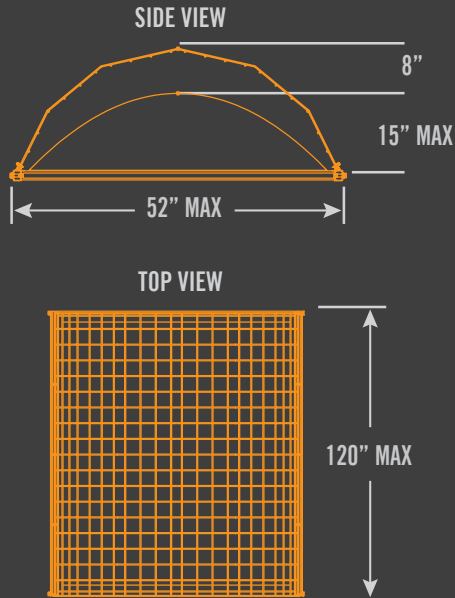
MINIMUM REQUIREMENTS

- Requires standard aluminum frame for mounting

SRC SKYLIGHT SCREENS

PRODUCT SPECIFICATIONS

DIMENSIONS TYPICAL DESIGN TOLERANCE



SIZE OPTIONS

SRC Skylight Screens are made for skylights ranging from 24" x 24" up to 52" x 120"

WEIGHT

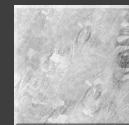
24"x 24"	13 lbs
24"x 120"	52 lbs
36"x 36"	24 lbs
36"x 120"	78 lbs
48"x 48"	42 lbs
48"x 120"	104 lbs
52"x 60"	59 lbs
52"x 120"	121 lbs

ANY INTERMEDIATE
SIZES AVAILABLE

NON-PENETRATING FRAME ATTACHMENT



FINISH



**GALVANIZED SCREEN
ALUMINUM FRAME**

PRODUCT SPECIFICATIONS

- Designed in accordance with OSHA Standards (29 CFR 1910.28 and CFR 1926.502) and
- CalOSHA Title 8, Chapter 7, Article 2, 3212(e)(1) compliant up to 52"W x 120"L
- Prevents contact with lens in event of fall
- Compression fits to skylight without penetrations
- Galvanized steel and aluminum components
- Provides high degree of safety at high risk skylight fall hazards
- Heavy-duty 4" x 4" x .25" welded wire screen
- American Welding Society Certified (AWS D1.1 & D1.3)
- 100% Made in USA



INSTALLATION

- Using two people, position skylight guard over skylight
- Use a standard wrench to tighten (4) compression bolts against skylight curb
- Estimated time to completion: 30 minutes

PROJECT:

CONTRACTOR:

DATE:

**Certified third party OSHA testing
results available on request**