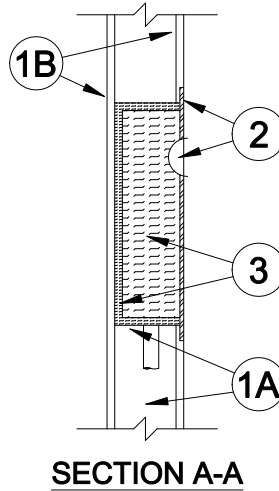
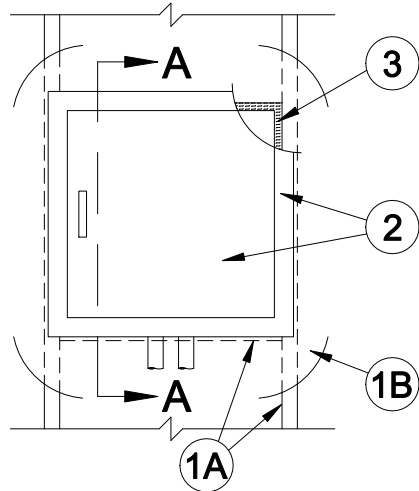


System No. W-L-7168
March 15, 2007
T Rating - 1 and 2 Hr (See Item 1)
F Rating - 1 and 2 Hr (See Item 1)



REVISIONS				
ZONE	REV	DESCRIPTION	DATE	APPROVED

1. Wall Assembly - The 1 or 2 hr fire rated framed gypsum board wall assembly shall be constructed of the materials and in the manner specified in the individual U400 or V400 Series Wall and Partition Designs in the UL Fire Resistance Directory and shall include the following construction features:

A. Stude - Wall framing shall consist of steel channel studs. Steel studs to be min 3-5/8 in. (92 mm) wide and spaced max 24 in. (610 mm) OC. An additional framing member shall be used to form a shelf within the wall cavity to support the steel box (Item 2) and mat fill material (Item 3). The framed opening is to be 1 in. (25 mm) wider than the width of the steel box.

B. Gypsum Board* - The gypsum board type, thickness, number of layers and orientation shall be, as specified in the individual Wall and Partition Design. Size of cutout made to accommodate steel box (Item 2) is to be 1 in. (25 mm) wider and 1 in. (25 mm) higher than the width and height of the steel box.

The hourly F and T Ratings of the firestop system are equal to the hourly fire rating of the wall in which the firestop system is installed.

2. Steel Box - Max 19 in. (483 mm) wide by max 32 in. (813 mm) high by max 3 1/2 in. (89 mm) deep recessed steel utility box with hinged steel door and mounting flange. Steel box secured to steel studs with steel screws after application of mat material (Item 3) on exterior surfaces of steel box. Bottom and/or top of steel box may be penetrated by up to two max 1-1/2 in. (38 mm) diam copper, steel or iron pipes or tubes. Open pipes or tubes which terminate within the box shall be sealed with caulk (Item 4) or plugged with a ball of putty (Item 5).

3. Fill, Void or Cavity Materials* - Mat - Nominal 0.4 in. (10 mm) thick aluminum foil faced endothermic mat supplied in 24 in. wide rolls. Individual pieces of mat cut to cover four sides and back of box and laminated to box with high strength, fast, contact type adhesive (foil face exposed). The mat sections on the top and bottom of the box shall be cut to overlap the mat sections on the sides of the box. The mat section on the back of the box shall be cut to lap over the edge of the mat sections on the top, bottom and vertical sides of box. Circular cutouts made in the mat to accommodate the pipes or tubes to be 1/4 in. to 1/2 in. (6 to 13 mm) larger than outside diam of pipe or tube. All corners and butted seams in the mat are to be covered with min 2 mill aluminum foil tape.

3M COMPANY - Type E-54A or E-5A-4 Mat

4. Fill, Void or Cavity Materials* - Caulk or Sealant - (Not Shown) - Nom 1/4 in. (6 mm) diam bead of caulk applied to the edge of the mat material around the perimeter of the box mounting flange. Additional caulk fill material shall be used to completely fill each circular cutout made in the mat material to accommodate a pipe or tube. The end of each open pipe or tube which terminates within the box shall be sealed with a min 1/2 in. (13 mm) depth of caulk.

3M COMPANY - Type CP 25WB+ Caulk, FB-3000WT Sealant

5. Fill, Void or Cavity Materials* - Putty - (Not Shown) - As an alternate to the caulk (Item 4), the end of each open pipe or tube which terminates within the box may be sealed with a min 1/2 in. (13 mm) depth of putty fill material.

3M COMPANY - Type MP+ Moldable Putty

*Bearing the UL Classification Mark

CONSULT CURRENT INDEPENDENT LABORATORIES (UL) FOR SYSTEMS OR DESIGN DETAILS.

PROJECT	SHT 1 of 1	SIGNATURE	DATE
	WL7168.DWG		
SYSTEM/DESIGN NO.	DATE	<small>All statements, technical information recommendations contained herein are based on tests we believe to be reliable. However since the conditions of use and application are beyond our control, 3M shall not be liable for any damage direct or consequential resulting from the use of this material or design. 3M's only warranty shall be to replace our products proved to be defective.</small>	
W-L-7168	03-15-07		
3M Fire Protection Products		NOT FOR USE AS CONSTRUCTION DOCUMENT. DRAWING NOT TO SCALE.	