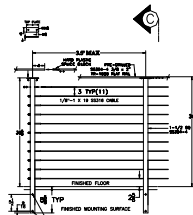
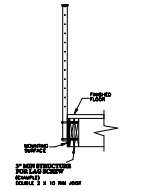


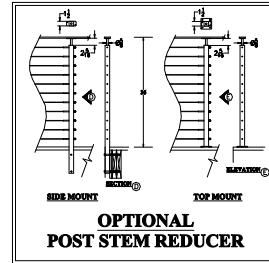
TYPICAL END CONDITION A



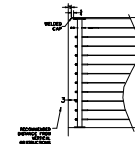
ELEVATION B



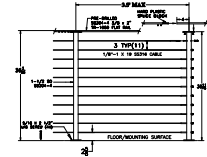
SECTION VIEW C



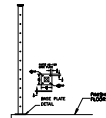
**OPTIONAL
POST STEM REDUCER**



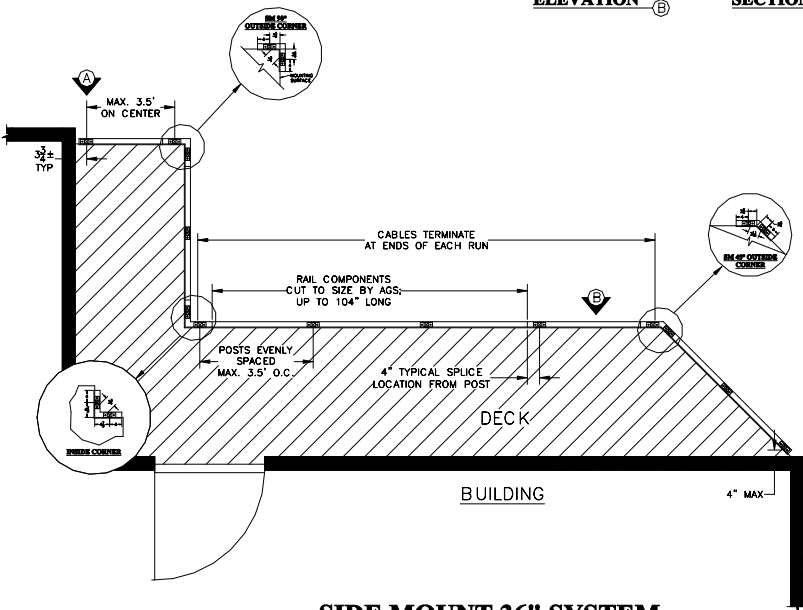
TYPICAL END CONDITION A



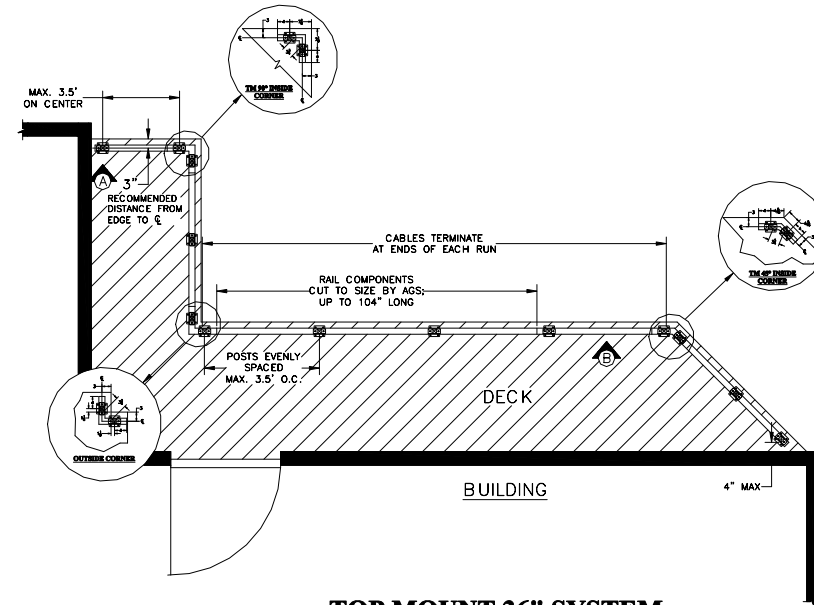
ELEVATION B



ELEVATION C



1 SIDE MOUNT 36" SYSTEM
WITH STOCK FLAT TOP RAIL COMPONENTS
CONTACT AGS FOR CUSTOMIZATION OPTIONS
888-842-9492 OR info@agsstainless.com



2 TOP MOUNT 36" SYSTEM
WITH STOCK FLAT TOP RAIL COMPONENTS
CONTACT AGS FOR CUSTOMIZATION OPTIONS
888-842-9492 OR info@agsstainless.com