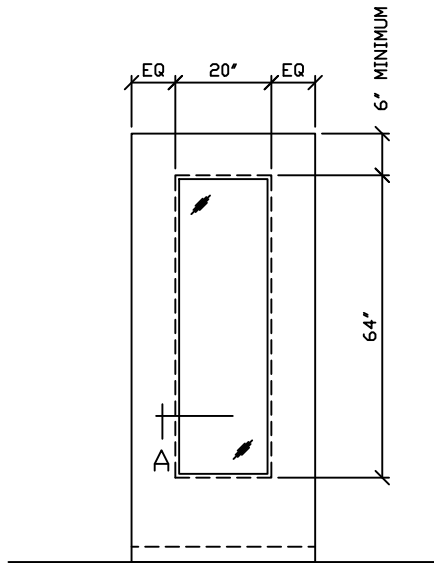


NOTE: VISION LITE AS SHOWN BELOW  
HAS BEEN CERTIFIED FOR ACOUSTIC  
PERFORMANCE AS PER AMBICO ENGINEERS.  
INDEPENDENT TEST DATA FOR GLAZED  
OPENINGS EXCEEDING 300 SQUARE INCHES  
IS PENDING.



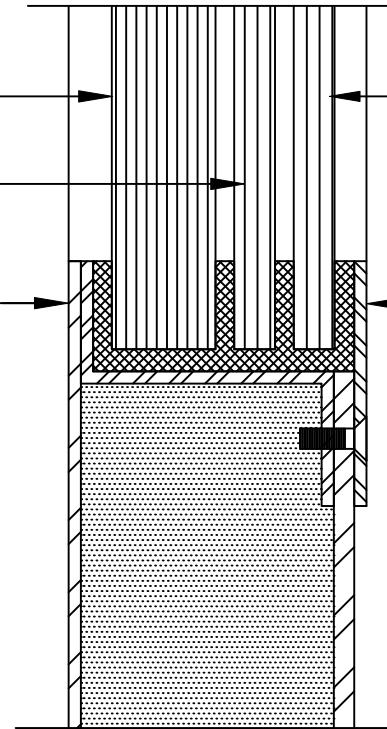
ELEVATION

ALL DIMENSIONS SHOWN REFER  
TO DOOR CUTOUT SIZES

3/4" ACOUSTIC GLASS

1/4" CLEAR GLASS

FIXED STOP ON THE SECURE  
SIDE (LOCK CYLINDER SIDE)  
OF THE DOOR



1/4" CLEAR OR 1/4" GEORGIAN  
WIRE GLASS (PLEASE SPECIFY).  
WIRED GLASS WILL BE USED  
AUTOMATICALLY IF THE OPENING  
IS FIRE RATED

REMOVABLE STOP

SECTION 'A'

NOTE: ALL GLASS TO BE FACTORY INSTALLED BY AMBICO

\*\* FULL LITES AVAILABLE ABOVE STC 46, CONSULT FACTORY

TYPICAL FULL LITE FOR STC STEEL DOORS FROM STC 33 THROUGH STC 46 \*\*

JOB NO: XXXXXXXX

SHEET: 1

OF: 1