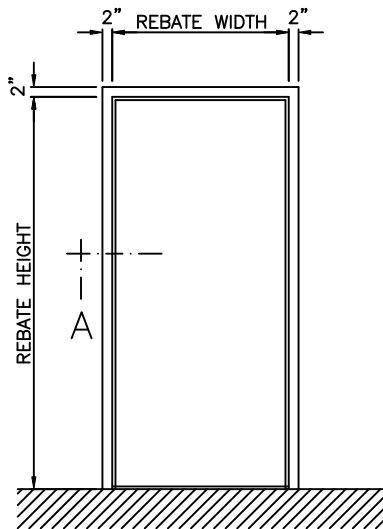
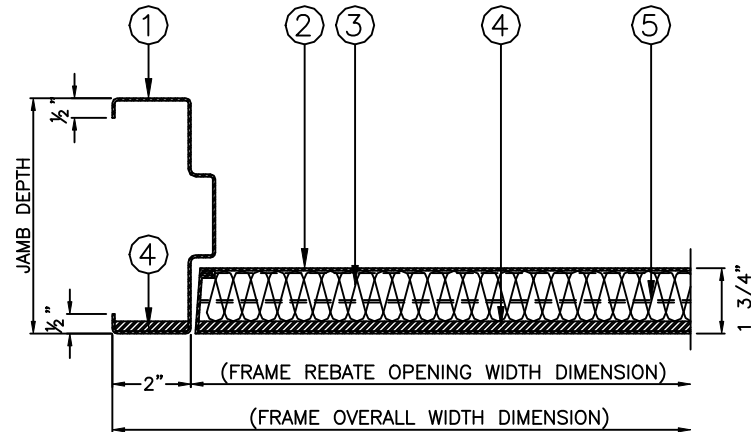


LEGEND:

1. PRESSED STEEL FULLY WELDED BULLET RESISTANT FRAME.
2. HOLLOW METAL BULLET RESISTANT DOOR.
3. VOIDS FILLED WITH INSULATION.
4. ARMOUR SHIELD PLATE TO UL752. ARMOUR SHIELD MAY VARY IN THICKNESS AS REQUIRED TO ACHIEVE PERFORMANCE RATING.
5. HORIZONTAL STEEL STIFFENERS.



ELEVATION



SECTION 'A'

NOTE:
FRAME MUST BE INSTALLED AT FINISHED FLOOR HEIGHT.
(DO NOT EMBED IN FLOOR)

OUR STOCK OPTIONS

STOCK FRAMES & DOORS ARE AVAILABLE IN LEVELS 1 THRU 8 IN 3'-0" x 7'-0" SIZE ONLY, WITH A VARIETY OF JAMB DEPTHS. HARDWARE TEMPLATING INCLUDES 4.50"x.180" HINGES, CYLINDRICAL OR MORTISED LOCK OR EXIT DEVICE, AND SURFACE CLOSER.

SIDELITE, BORROWED LITE FRAMES, AND DOORS WITH VISION LITES ARE AVAILABLE. SEE VISION LITE DETAIL DRAWINGS ON WEBSITE FOR LEVELS 1 THROUGH 4. FOR OTHER OPTIONS, PLEASE CONSULT FACTORY.

PRODUCT OPTIONS

- ☐ TACK & FILLED "SEAMLESS EDGE SEAMS"
- ☐ FLUSH CLOSED TOP CAP
- ☐ FLUSH CLOSED BOTTOM CAP

FIRE RATINGS

- ☐ 20 MINUTE
- ☐ 45 MINUTE
- ☐ 90 MINUTE



TYPICAL BULLET RESISTANT SINGLE FRAME AND STEEL DOOR TO UL752 LEVEL 1 TO 8

JOB NO:

SHEET: 1

OF: 1