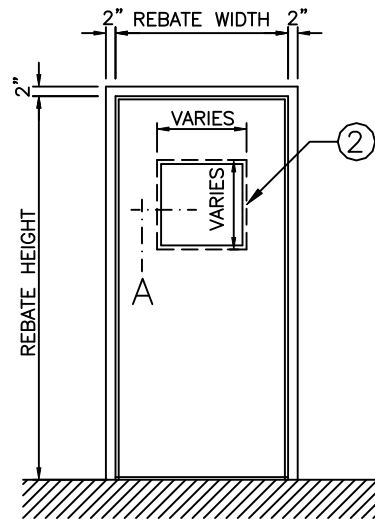


LEGEND:

1. ARMOUR SHIELD LEVEL 3.
2. ARMOUR SHIELD 1 1/16" MAXIMUM THICK GLASS LEVEL 3, FACTORY INSTALLED.

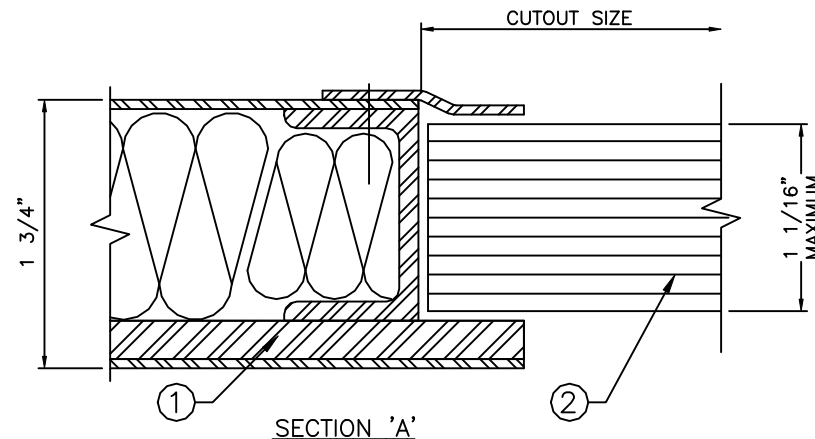
NOTE:

IF GLASS IS SUPPLIED BY OTHERS FOR SITE INSTALLATION, CUSTOMER MUST ENSURE THAT THE GLASS HAS BEEN TESTED AND IS CERTIFIED UNDER UL 752.



ELEVATION

NOTE: – THE SIZES SHOWN IN THE ELEVATION REFER TO THE DOOR CUTOUT SIZE.



SECTION 'A'

NOTE:
FRAME MUST BE INSTALLED AT FINISHED FLOOR HEIGHT.
(DO NOT EMBED IN FLOOR)

OUR STOCK OPTIONS

STOCK DOORS ARE AVAILABLE AT
3'-0" x 7'-0" WITH A 12 3/8"x12
3/8" CUTOUT TO RECEIVE 12"x12"
BULLET RESISTANT GLASS TO UL 752
LEVEL 3. THE GLASS WILL BE
FACTORY INSTALLED.



TYPICAL BULLET RESISTANT VISION LITE TO UL752 LEVEL 3

JOB NO:

SHEET: 1

OF: 1