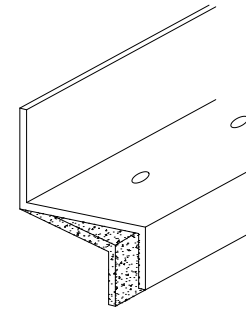
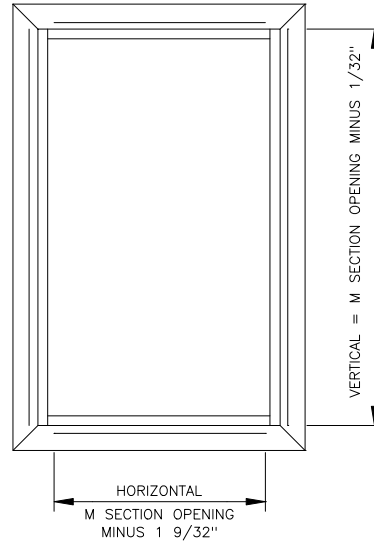
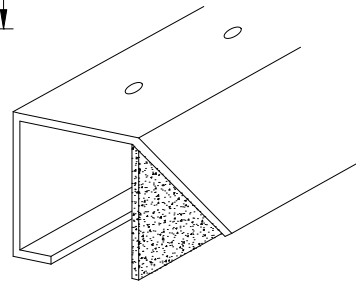
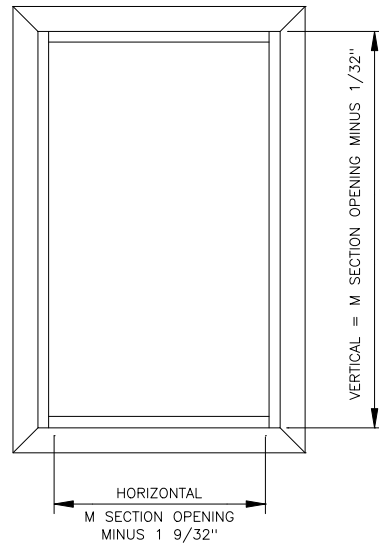


1. REMOVE BEAD & MOULDING FROM "M" SECTION



2. CUT ZEE TO SUIT.
NOTCH ENDS IF REQ'D TO CLEAR LANCING.



3. CUT GLAZING BEAD,
NOTCH GLAZING BEAD IF REQ'D TO CLEAR LANCING.

4. PLUGWELD ZEE TO "M" SECTION. (SEE REVERSE SIDE)
5. GRIND WELD SMOOTH
6. INSERT 1 1/8" BLOCK FOR GLAZING GAP.
7. INSTALL GLAZING BEAD WITH #9443-3 SCREWS.
8. REMOVE SPACER BLOCK.

NOTE: GLAZING GAP CAN BE VARIED BY UTILIZING OTHER SPACER BLOCK THICKNESSES.