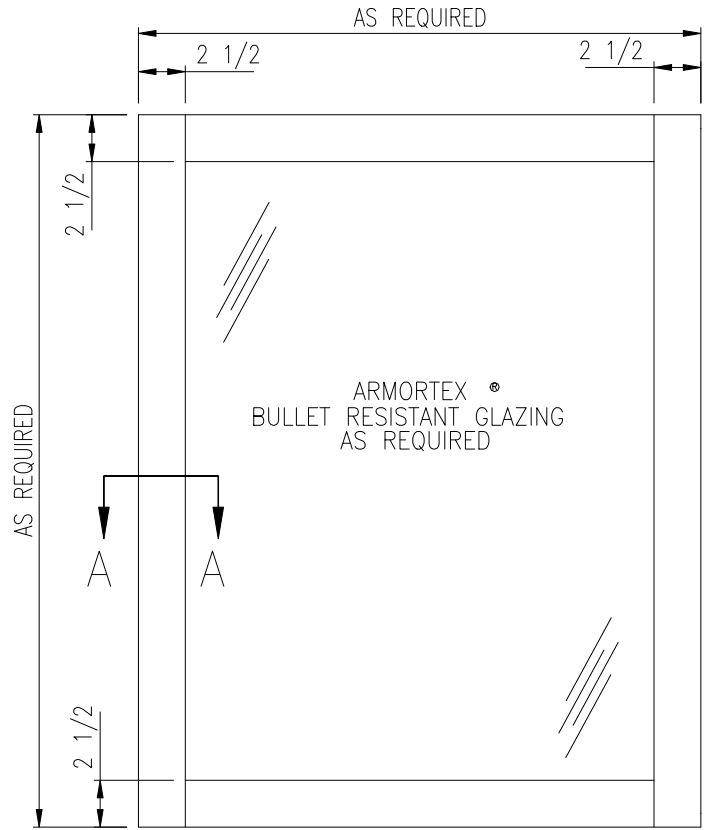


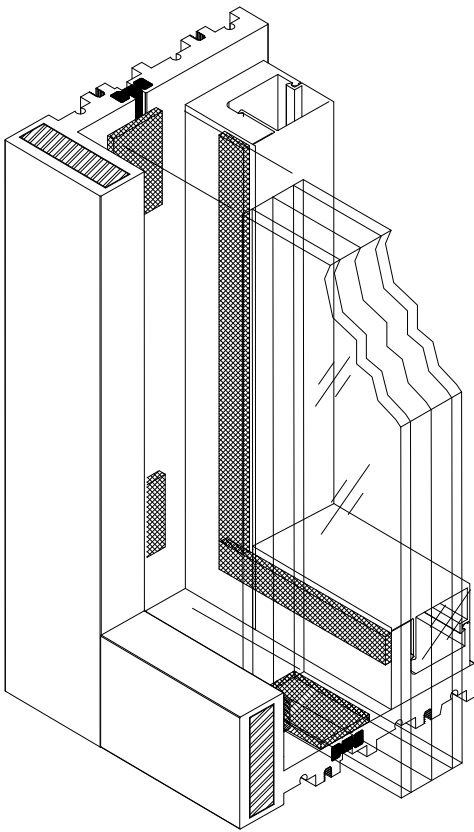
MODEL 625BR BULLET RESISTANT (.30cal AP MAXIMUM)

NOTES:

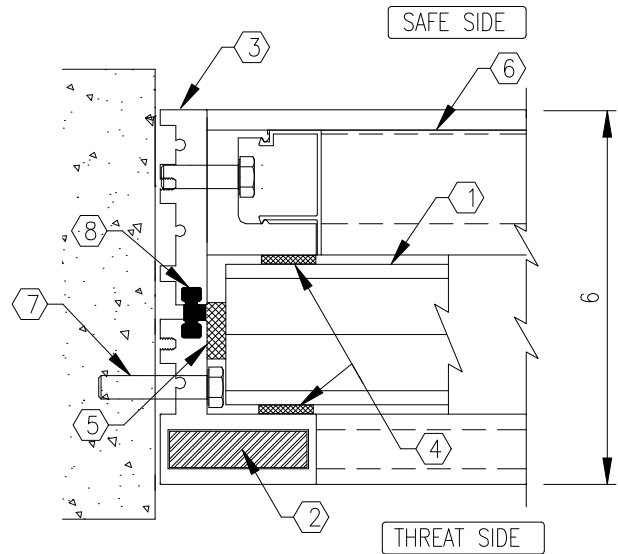
- ① ARMORTEX® BULLET RESISTANT GLAZING
- ② ARMORTEX® HI-HARD BALLISTIC STEEL (IF REQUIRED)
- ③ EXTRUDED ALUMINUM FRAME (CLEAR ANODIZED)
- ④ TREMCO-440 GLAZING TAPE
- ⑤ NEOPRENE SETTING BLOCKS
- ⑥ REMOVABLE STOP
- ⑦ ANCHORS AS REQUIRED (BY OTHERS)
- ⑧ URETHANE THERMAL BRAKE



ELEVATION



THIS VIEW FOR
CLARITY ONLY



SECTION A-A

I:\BARRY\BLAST WINDOWS\BR WINDOW.DWG.DWG 10/02/08 @ 11:52 User: blewis

REVISIONS			ARMORTEX® BULLET / BLAST RESISTANT PRODUCTS 5926 CORRIDOR PKWY SCHERTZ, TX 78154 TEL: 210-661-8306 800-880-8306 FAX: 210-661-8308		BALLISTIC LEVEL	
No.	DESCRIPTION	DATE			DRN.BY:	DATE:
			B. LEWIS	02-20-08		
			CHKD.BY:	DATE:		
			DRAWING No.	SHEET		
			W1011700	1 OF 1		
TITLE: ARMORTEX® MODEL 625BR WINDOW 30 cal. AP MAXIMUM THERMALLY BROKEN ALUMINUM			PROJECT NAME:			
UNLESS OTHERWISE SPECIFIED ALL DIMENSIONS ARE IN INCHES			SCALE	PROJECT No.		
			NONE			