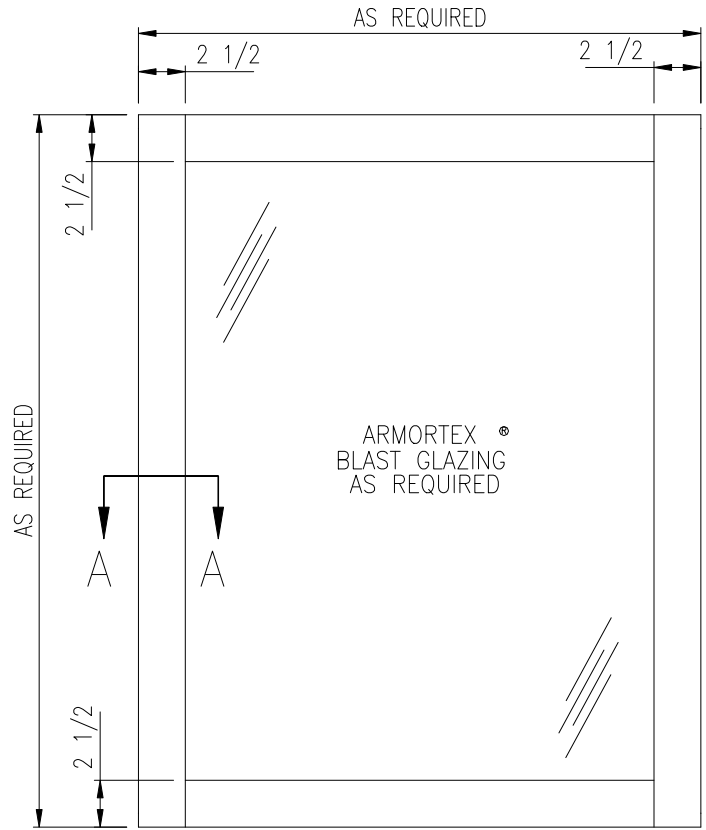


# MODEL 625BL

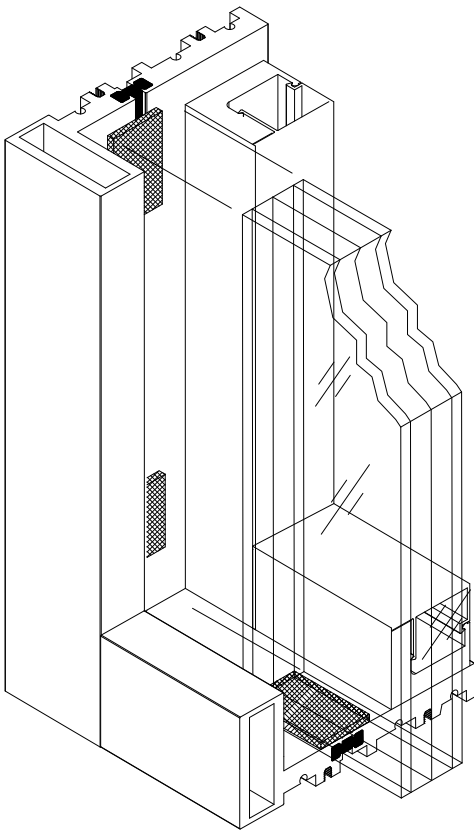
## BLAST - 42 psi MAXIMUM

NOTES:

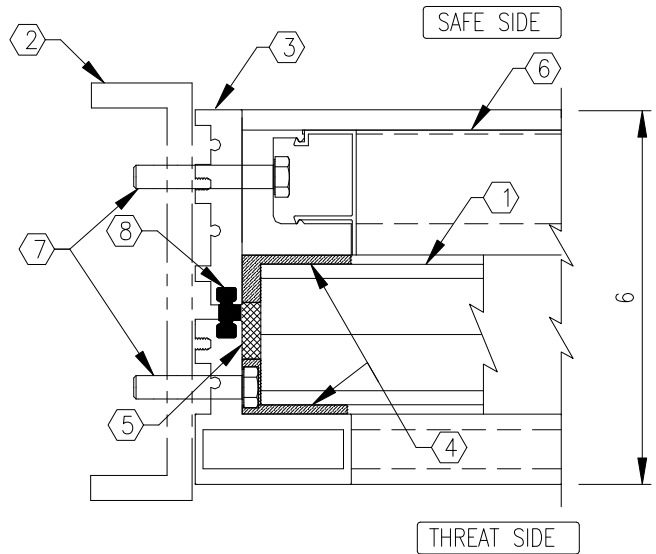
- ① ARMORTEX® BLAST GLAZING
- ② EMBEDS WILL VARY PER SPECIFIC BLAST-INSTALLATION REQUIREMENTS
- ③ EXTRUDED ALUMINUM FRAME (CLEAR ANODIZED)
- ④ DOW CORNING 995 STRUCTURAL SILICONE
- ⑤ NEOPRENE SETTING BLOCKS
- ⑥ REMOVABLE STOP
- ⑦ HHCS 3/8"-16NC, GRADE 8 ANCHOR BOLTS OR AS REQUIRED, BY ARMORTEX®
- ⑧ URETHANE THERMAL BRAKE



ELEVATION



THIS VIEW FOR CLARITY ONLY



SECTION A-A

I:\BARRY\BLAST WINDOWS\BL WINDOW.DWG.DWG 09/24/08 @ 09:03 User: blewis

REVISIONS			ARMORTEX® BULLET / BLAST RESISTANT PRODUCTS		psi	msec	
No.	DESCRIPTION	DATE	5926 CORRIDOR PKWY SCHERTZ, TX 78154		DRN.BY:	DATE:	
			TEL: 210-661-8306 800-880-8306 FAX: 210-661-8308		B. LEWIS	02-20-08	
			TITLE:	PROJECT NAME:	CHKD.BY:	DATE:	
			ARMORTEX® MODEL 625BL BLAST WINDOW THERMALLY BROKEN ALUMINUM				
			UNLESS OTHERWISE SPECIFIED ALL DIMENSIONS ARE IN INCHES	SCALE	PROJECT No.	DRAWING No.	SHEET
				NONE		W1011720	1 OF 1