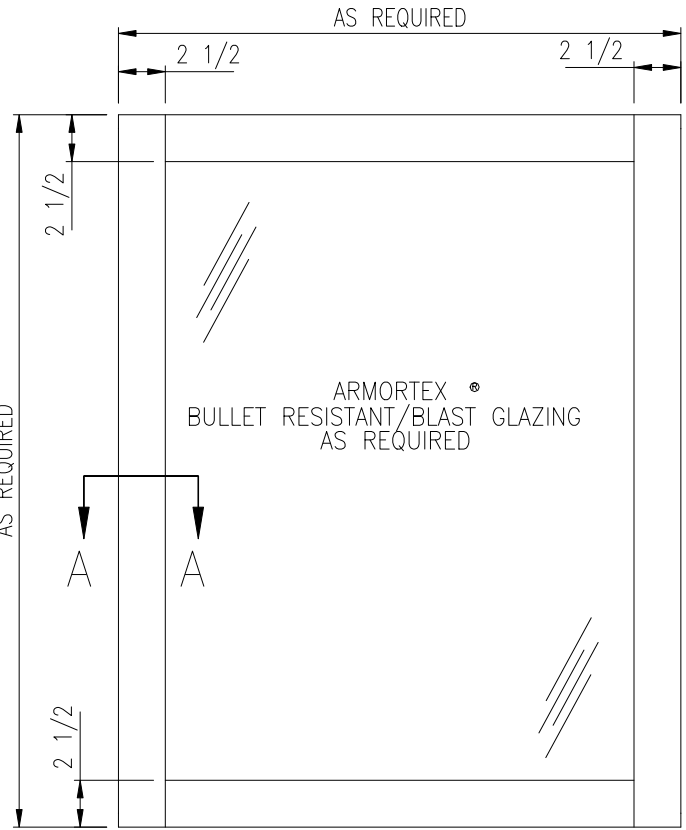


MODEL 625BR/BL BULLET RESISTANT/BLAST

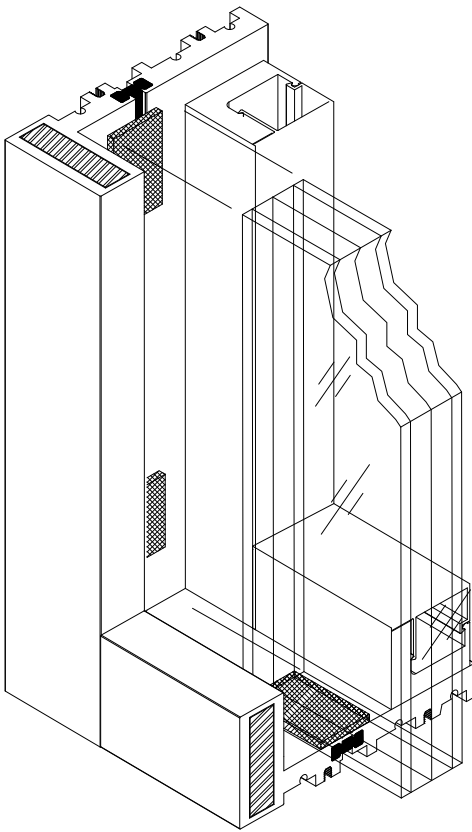
(30cal AP MAXIMUM/42psi MAXIMUM)

NOTES:

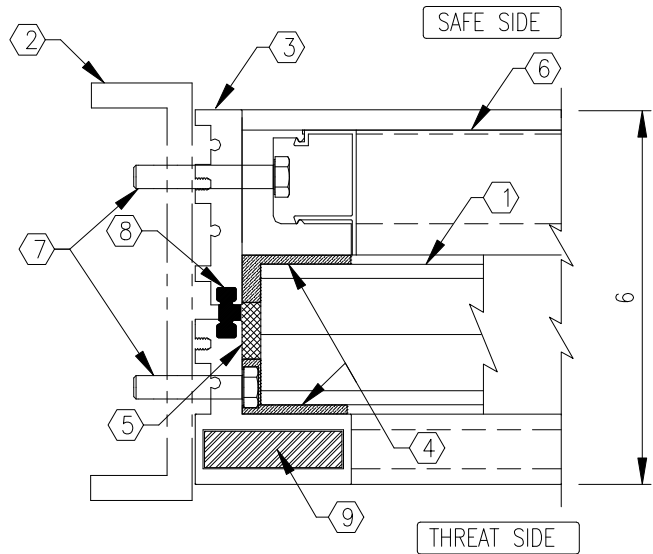
- ① ARMORTEX® BULLET RESISTANT/BLAST GLAZING
- ② EMBEDS WILL VARY PER SPECIFIC BLAST-INSTALLATION REQUIREMENTS
- ③ EXTRUDED ALUMINUM FRAME (CLEAR ANODIZED)
- ④ DOW CORNING 995 STRUCTURAL SILICONE
- ⑤ NEOPRENE SETTING BLOCKS
- ⑥ REMOVABLE STOP
- ⑦ HHCS 3/8"-16NC, GRADE 8 ANCHOR BOLTS OR AS REQUIRED, BY ARMORTEX®
- ⑧ URETHANE THERMAL BRAKE
- ⑨ ARMORTEX® HI-HARD BALLISTIC STEEL (IF REQUIRED)



ELEVATION



THIS VIEW FOR CLARITY ONLY



SECTION A-A

I:\BARRY\BLAST WINDOWS\BR-BL WINDOW.DWG.DWG 09/24/08 @ 09:03 User: blewis

REVISIONS			ARMORTEX® BULLET / BLAST RESISTANT PRODUCTS 5926 CORRIDOR PKWY SCHERTZ, TX 78154 TEL: 210-661-8306 800-880-8306 FAX: 210-661-8308		BALLISTIC LEVEL	
No.	DESCRIPTION	DATE			psi	msec
			DRN.BY:	DATE:		
			B. LEWIS	02-20-08		
			CHKD.BY:	DATE:		
			DRAWING No.	SHEET		
			W1011740	1 OF 1		
			TITLE: ARMORTEX® MODEL 625BR/BL WINDOW	PROJECT NAME:		
			30 cal. AP MAXIMUM/42psi MAXIMUM THERMALLY BROKEN ALUMINUM	SCALE	PROJECT No.	
			UNLESS OTHERWISE SPECIFIED ALL DIMENSIONS ARE IN INCHES	NONE		