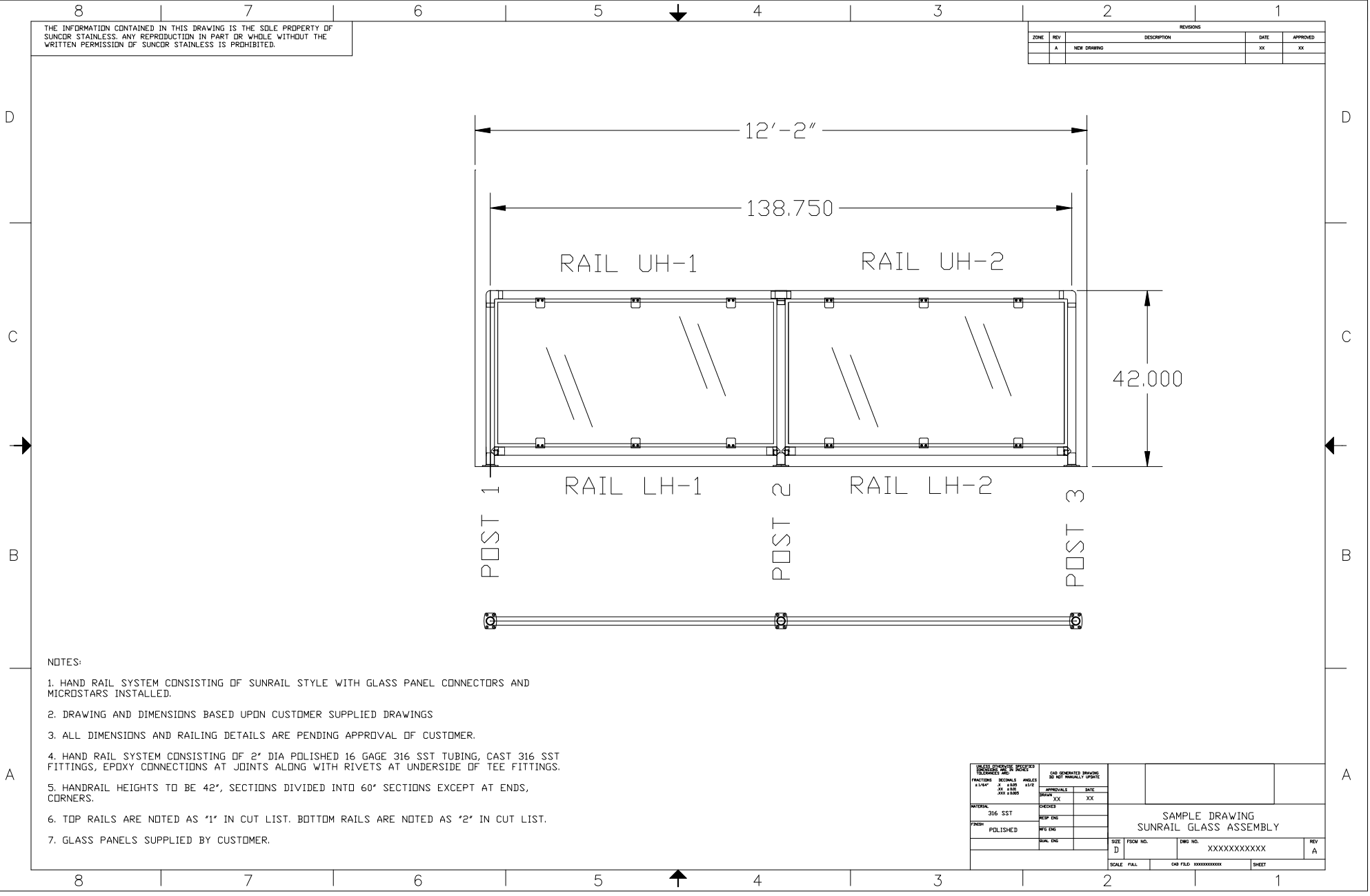


THE INFORMATION CONTAINED IN THIS DRAWING IS THE SOLE PROPERTY OF SUNGER STAINLESS. ANY REPRODUCTION IN PART OR WHOLE WITHOUT THE WRITTEN PERMISSION OF SUNGER STAINLESS IS PROHIBITED.

		REVISIONS		DATE	APPROVED
ZONE	REV	DESCRIPTION			
A		NEW DRAWING		XX	XX



- NOTES:
- HAND RAIL SYSTEM CONSISTING OF SUNRAIL STYLE WITH GLASS PANEL CONNECTORS AND MICROSTARS INSTALLED.
 - DRAWING AND DIMENSIONS BASED UPON CUSTOMER SUPPLIED DRAWINGS
 - ALL DIMENSIONS AND RAILING DETAILS ARE PENDING APPROVAL OF CUSTOMER.
 - HAND RAIL SYSTEM CONSISTING OF 2" DIA POLISHED 16 GAGE 316 SST TUBING, CAST 316 SST FITTINGS, EPDXY CONNECTIONS AT JOINTS ALONG WITH RIVETS AT UNDERSIDE OF TEE FITTINGS.
 - HANDRAIL HEIGHTS TO BE 42", SECTIONS DIVIDED INTO 60" SECTIONS EXCEPT AT ENDS, CORNERS.
 - TOP RAILS ARE NOTED AS '1' IN CUT LIST. BOTTOM RAILS ARE NOTED AS '2' IN CUT LIST.
 - GLASS PANELS SUPPLIED BY CUSTOMER.

<small>UNLESS OTHERWISE SPECIFIED DIMENSIONS ARE IN INCHES</small>		<small>CAD GENERATED DRAWING DO NOT MANUALLY UPDATE</small>			
<small>FRACTIONS 1/8" 1/4" 3/8" 1/2" 5/8" 3/4" 7/8" 1"</small>	<small>DECIMALS 0.125 0.25 0.375 0.5 0.625 0.75 0.875 1</small>	<small>ANGLES 30 45 60 90 120 150 180</small>	<small>APPROVALS</small>	<small>DATE</small>	<small>XX</small>
<small>MATERIAL</small>	<small>CHECKED</small>	<small>APPROVED</small>	<small>DATE</small>		
<small>316 SST</small>	<small>REV ENG</small>				
<small>FINISH</small>	<small>REV ENG</small>				
<small>POLISHED</small>	<small>REV ENG</small>				
	<small>SCALE</small>	<small>FORM NO.</small>	<small>DWG NO.</small>	<small>REV</small>	<small>A</small>
	<small>SCALE</small>	<small>SCALE</small>	<small>CAD FILE: XXXXXXXXXXXX</small>	<small>SHEET</small>	

SAMPLE DRAWING
SUNRAIL GLASS ASSEMBLY

XXXXXXXXXXXX