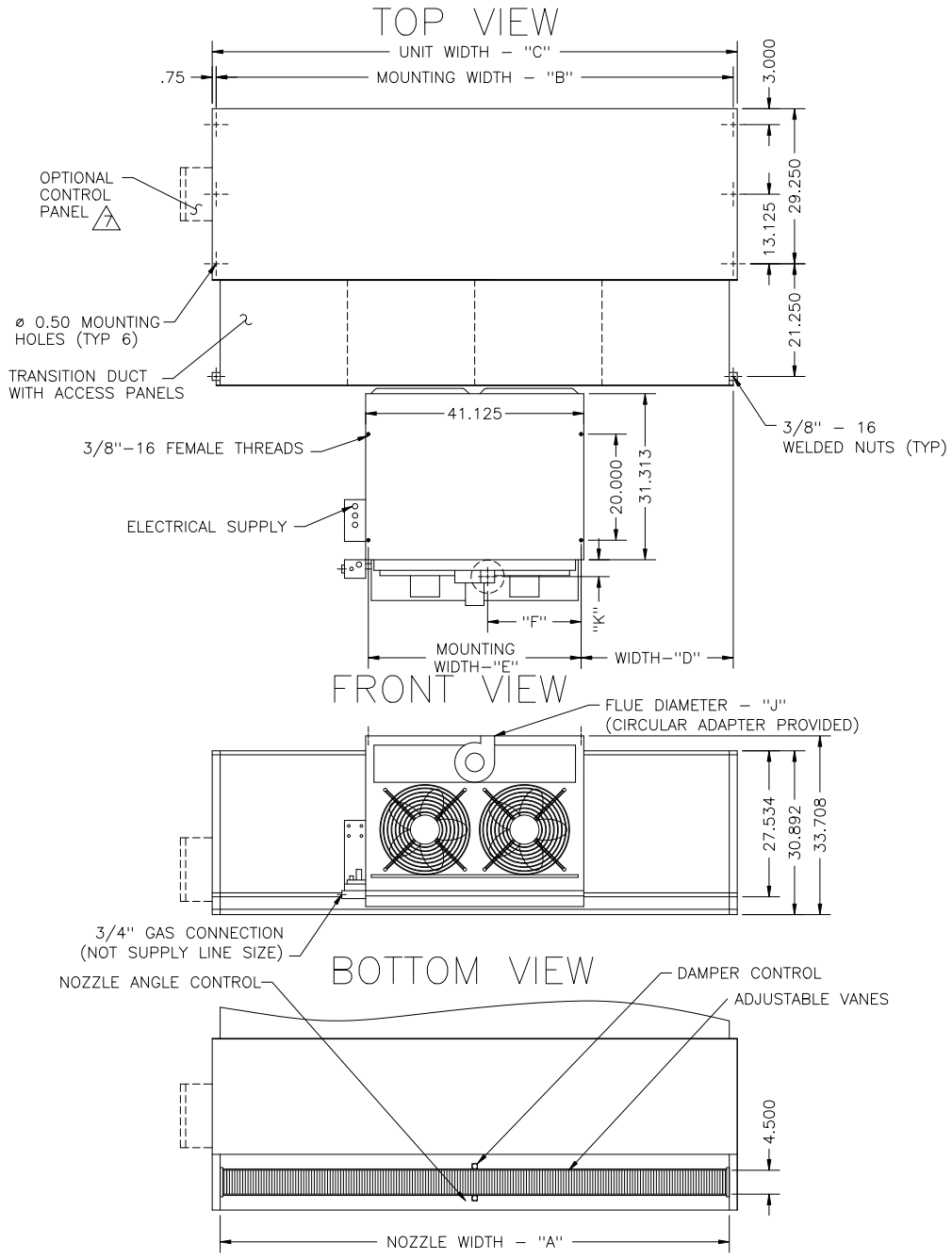


# CFA

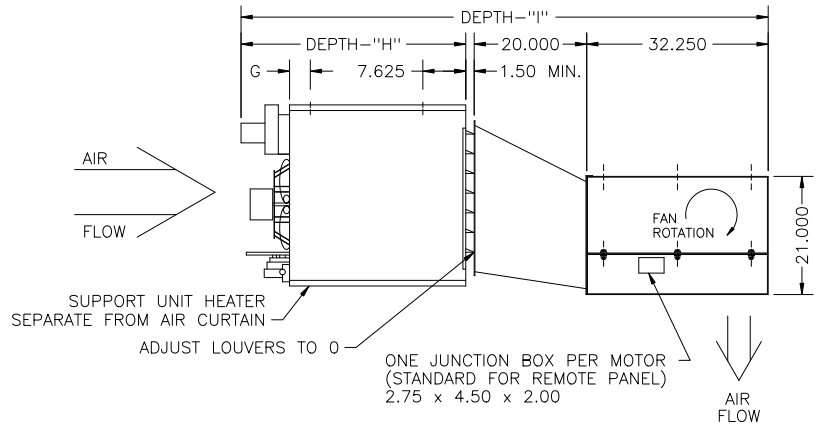
## POSITIVE INDIRECT GAS ONE HEATER SYSTEM



### NOTES:

- ⚠ AIR CURTAIN MUST BE INSTALLED SO AIR STREAM IS NOT OBSTRUCTED WHEN DEFLECTED 20° TO EITHER SIDE OF C.
- ⚠ ELECTRICAL CONNECTIONS TO BE FLEXIBLE.
- ⚠ FIELD VERIFY DIMENSIONS.
- ⚠ ANCHORS TO SUPPORTING STRUCTURE BY OTHERS.
- ⚠ ADEQUACY OF SUPPORTING STRUCTURE IS TO BE VERIFIED BY A PROFESSIONAL STRUCTURAL ENGINEER.
- ⚠ SUPPLY PRESSURES HIGHER THAN 0.50 POUND REQUIRE INSTALLATION OF AN ADDITIONAL SERVICE REGULATOR EXTERNAL TO THE UNIT.
- ⚠ OPTIONAL CONTROL PANEL AVAILABLE: LEFT HAND MOUNT, RIGHT HAND MOUNT, & REMOTE. PLEASE SPECIFY.
- ⚠ DIMENSIONS IN INCHES.

### END VIEW



### CAUTION:

HEATER IS EQUIPPED FOR A MAXIMUM GAS SUPPLY PRESSURE OF 1/2 POUND, 8 OUNCES, OR 14 INCHES WATER COLUMN.

MODEL	NOZZLE WIDTH "A"	MOUNTING WIDTH "B"	UNIT WIDTH "C"	MBTU INPUT	WIDTH "D"	WIDTH "E"	WIDTH "F"	DEPTH "G"	DEPTH "H"	DEPTH "I"	FLUE "J"	WIDTH "K"
CFA-1-60G	60.00	61.50	63.00	230	10.6875	40.125	17.00	3.688	40.000	93.750	5.00	3.50
CFA-1-72G	72.00	73.50	75.00	290	16.6875	40.125	17.00	3.688	40.000	93.750	5.00	3.50
CFA-1-96G	96.00	97.50	99.00	400	22.6875	40.125	21.625	3.688	41.125	94.875	6.00	3.50
CFA-1-108G	108.00	109.50	111.00	400	28.6875	40.125	21.625	3.688	41.125	94.875	6.00	3.50

PROJECT		
LOCATION		
ARCHITECT		
ENGINEER		
DWG. NO.	CFAK3036	TITLE: <b>BERNER</b>
DATE	09JUL01	MODEL CFA AIR CURTAIN
BY	B. Peffer	INDIRECT GAS FIRED - ONE HEATER SYSTEM
REPLACES	22SEP99	
BY	B. Peffer	BERNER INTERNATIONAL CORP. NEW CASTLE, PA.