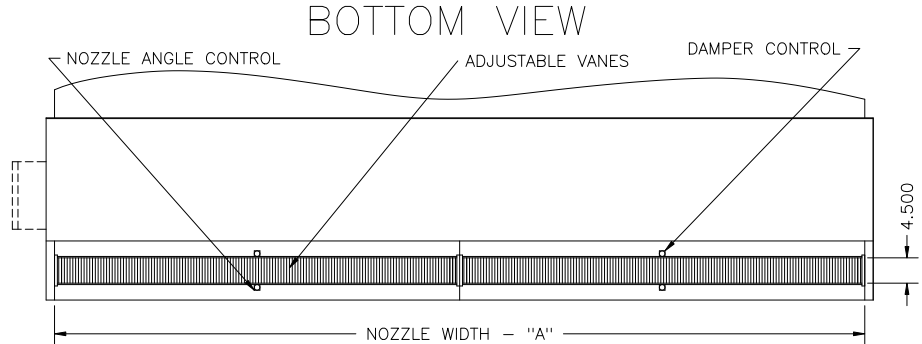
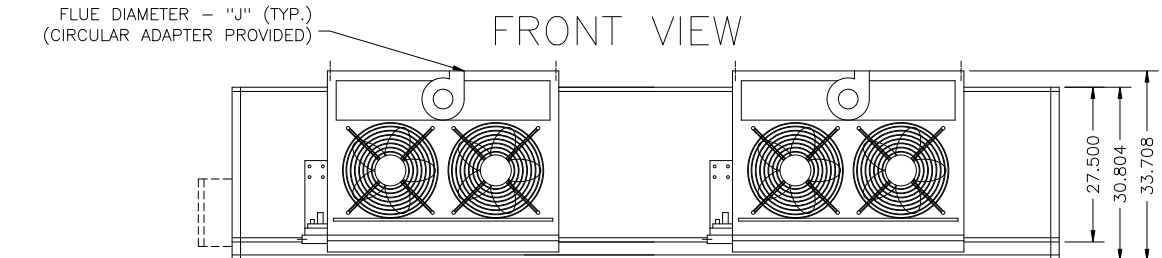
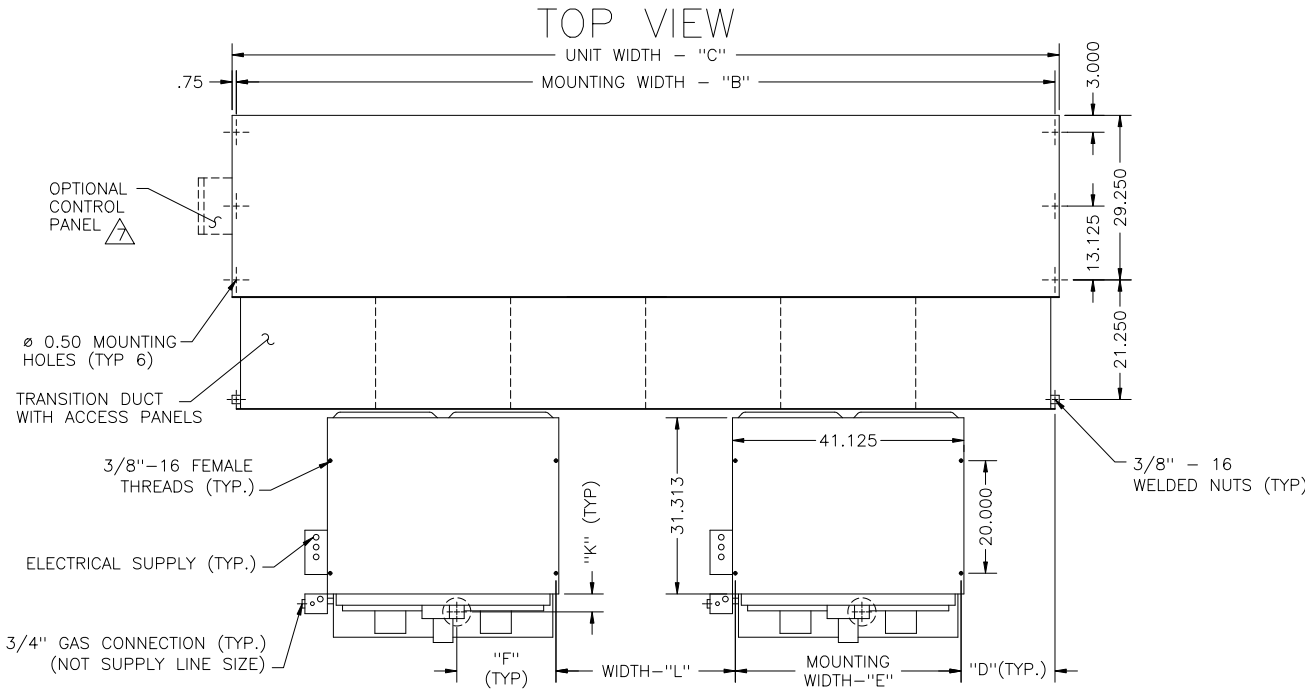


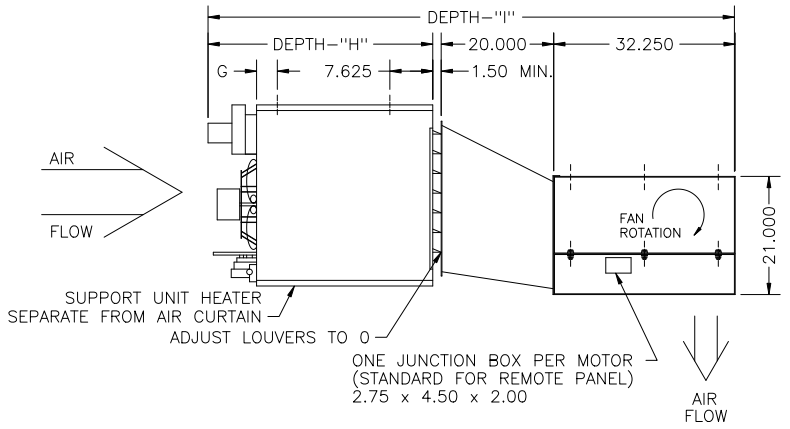
CFA POSITIVE INDIRECT GAS TWO HEATER SYSTEM



NOTES:

- 1 AIR CURTAIN MUST BE INSTALLED SO AIR STREAM IS NOT OBSTRUCTED WHEN DEFLECTED 20° TO EITHER SIDE OF C.
- 2 ELECTRICAL CONNECTIONS TO BE FLEXIBLE.
- 3 FIELD VERIFY DIMENSIONS.
- 4 ANCHORS TO SUPPORTING STRUCTURE BY OTHERS.
- 5 ADEQUACY OF SUPPORTING STRUCTURE IS TO BE VERIFIED BY A PROFESSIONAL STRUCTURAL ENGINEER.
- 6 SUPPLY PRESSURES HIGHER THAN 0.50 POUND REQUIRE INSTALLATION OF AN ADDITIONAL SERVICE REGULATOR EXTERNAL TO THE UNIT.
- 7 OPTIONAL CONTROL PANEL AVAILABLE: LEFT HAND MOUNT, RIGHT HAND MOUNT, & REMOTE. PLEASE SPECIFY.
- 8 DIMENSIONS IN INCHES.

END VIEW



CAUTION:

HEATER IS EQUIPPED FOR A MAXIMUM GAS SUPPLY PRESSURE OF 1/2 POUND, 8 OUNCES, OR 14 INCHES WATER COLUMN.

MODEL	NOZZLE WIDTH "A"	MOUNTING WIDTH "B"	UNIT WIDTH "C"	MBTU INPUT	WIDTH "D"	WIDTH "E"	WIDTH "F"	DEPTH "G"	DEPTH "H"	DEPTH "I"	FLUE "J"	WIDTH "K"	WIDTH "L"
CFA-1-120G	117.00	118.50	120.00	2 @ 290	9.938	40.125	17.00	3.688	40.00	93.750	5.00	3.50	18.375
CFA-1-144G	144.00	145.50	147.00	2 @ 290	16.688	40.125	17.00	3.688	40.00	93.750	5.00	3.50	31.874
CFA-2-168G	168.00	169.50	171.00	2 @ 345	22.688	40.125	17.00	3.688	41.125	94.875	6.00	3.50	43.874
CFA-2-192G	192.00	193.50	195.00	2 @ 400	28.688	40.125	21.625	3.688	41.125	94.875	6.00	3.50	55.874

PROJECT		
LOCATION		
ARCHITECT		
ENGINEER		
DWG. NO.	CFAK3040	TITLE: BERNER
DATE	09JUL01	MODEL CFA AIR CURTAIN
BY	B. Peffer	INDIRECT GAS FIRED - TWO HEATER SYSTEM
REPLACES	22SEP99	
BY	B. Peffer	BERNER INTERNATIONAL CORP. NEW CASTLE, PA.