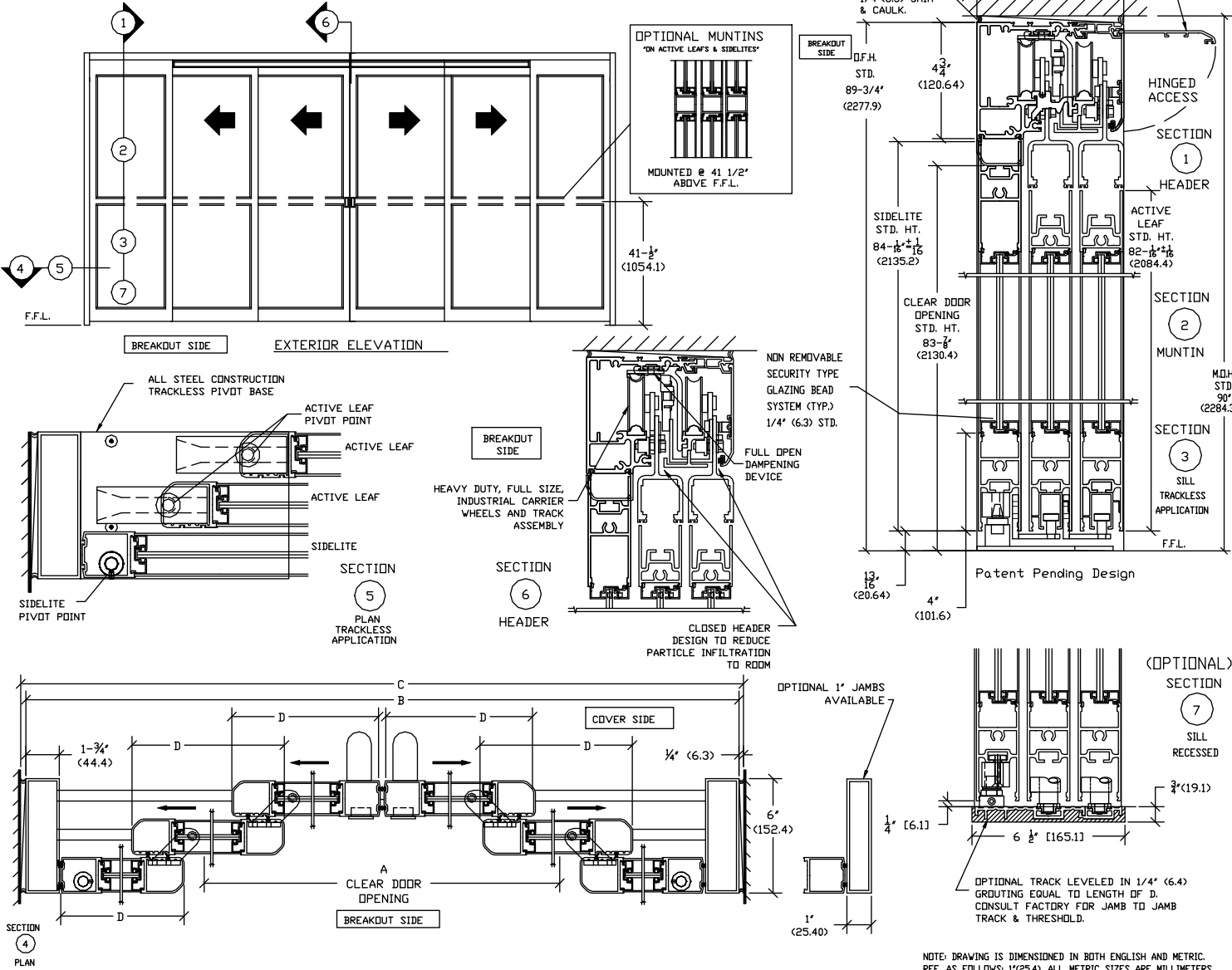


**ASSA ABLOY**

ASSA ABLOY Entrance Systems  
1900 Airport Road  
Monroe, NC 28110  
Phone: 1-866-237-2687  
specdesk@assabloy.com

**BESAM VERSAMAX ICU**  
FULL BREAKOUT, TELESCOPIC EQUAL PANEL BIPART  
SLIDING DOOR SYSTEM WITH TRACKLESS  
OR RECESSED TRACK GUIDE OPTIONS



NOTE:  
THE STANDARD PACKAGE CONSISTS OF:  
THE HEADER, FRAME, NARROW STILE, DOOR(S) & SIDELITE(S),  
PULL HANDLES, RECESSED FINGER PULL(S), GLASS STOPS & BLOCKS FOR 1/4" (6.3)  
TEMPERED GLASS, BREAKAWAY, VERTICAL WEATHER-STRIPPING, HEAVY  
DUTY FULL SIZE INDUSTRIAL CARRIER WHEELS AND TRACK ASSEMBLY,  
CONCEALED HEAVY DUTY PIVOTS, TAMPER PROOF COVER LATCHES, FULL OPEN  
DAMPENING DEVICE, FAST AND SLOW LEAF TIMING BELT ASSEMBLY, FLUSH BOLT  
(FOR TRACKLESS W/ DOUBLE 'C' HANDLES OR POSITIVE LATCH) AND  
REPLACEMENT PARTS COMMON TO STANDARD DOOR LINE.  
STANDARD FINISH: CLEAR - AA-M12C22A44, CLASS 1, .018 MM.  
SPECIAL FINISHES ARE AVAILABLE.

OPTIONS:  
MEDIUM STILE RAILS, POSITIVE LATCHING, BREAKOUT DAMPENER WITH 90° STOPS,  
CONCEALED DOOR SWEEPS, 5/8", 1" & 1 1/4" INSULATED GLASS, FLUSHBOLT FOR  
MANUAL LOCKING DOORS (FOR TRACKLESS W/ FINGER PULL, GUIDE TRACK OR  
SILL RECESSED), SLOPED GLASS FOR CLEAN ROOM ENVIRONMENTS, MUNTINS,  
SELF CLOSING, DOUBLE 'C' HANDLES, CLOSING DAMPENER, 1" WIDE JAMBS,  
7" & 10" BOTTOM RAILS, ANTI-STATIC AND NURSE ASSIST MAGNETIC CATCHES.

**DOOR PACKAGE WITH 1 3/4" JAMBS**

MODEL NO.	CLEAR DOOR OPENING	OVERALL FRAME WIDTH	MASONRY OPENING WIDTH	ACTIVE & SIDELITE WIDTH
	A	B	C	D
ICU-TE-6FB0-10	61 7/16" (1560.5)	120" (3048)	120 1/2" (3062.7)	21 3/16" (538.2)
ICU-TE-6FB0-12	77 7/16" (1966.9)	144" (3657.6)	144 1/2" (3678.3)	25 3/16" (639.8)
ICU-TE-6FB0-14	93 7/16" (2373.9)	168" (4267.2)	168 1/2" (4279.3)	29 3/16" (741.4)
KEY	28/3-18 9/16" (471.4)	C - 1/2" (12.7)	B + 1/2" (12.7)	B/6+ 3/16" (30.2)

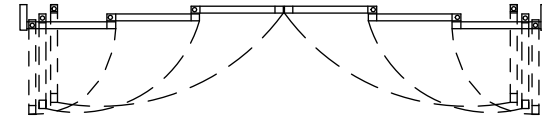
CONSULT FACTORY FOR ALL CUSTOM CONFIGURATION SIZES OR SIZES OVER 14'.  
ALL PACKAGES REQUIRE OVERHEAD SUPPORT.

**DOOR PACKAGE WITH 1" JAMBS**

MODEL NO.	CLEAR DOOR OPENING	OVERALL FRAME WIDTH	MASONRY OPENING WIDTH	ACTIVE & SIDELITE WIDTH
	A	B	C	D
ICU-TE-6FB0-10	62 7/16" (1585.9)	120" (3048)	120 1/2" (3062.7)	21 7/16" (544.5)
ICU-TE-6FB0-12	78 7/16" (1992.9)	144" (3657.6)	144 1/2" (3678.3)	25 7/16" (646.1)
ICU-TE-6FB0-14	94 7/16" (2398.7)	168" (4267.2)	168 1/2" (4279.3)	29 7/16" (747.7)
KEY	28/3-17 9/16" (446.0)	C - 1/2" (12.7)	B + 1/2" (12.7)	B/6+ 1/16" (36.5)

CONSULT FACTORY FOR ALL CUSTOM CONFIGURATION SIZES OR SIZES OVER 14'.  
ALL PACKAGES REQUIRE OVERHEAD SUPPORT.

**SURFACE/RECESSED TRACK APPLICATIONS**



**VIEW FROM BREAK OUT SIDE**

DOORS WILL BREAKOUT FROM ANY POSITION FOR  
SURFACE & RECESSED TRACK APPLICATIONS

**TRACKLESS APPLICATIONS**

DOORS WILL ONLY BREAK OUT WHEN IN THE  
FULLY OPEN POSITION FOR TRACKLESS APPLICATIONS

DWG NO. US23-3400-27  
DRN BY SS DATE 11/10/09 CHK BY DW DATE 11/10/09 REV. F DATE 5/29/14

**ASSA ABLOY**

NOTE: DRAWING IS DIMENSIONED IN BOTH ENGLISH AND METRIC.  
REF. AS FOLLOWS: 1"(25.4), ALL METRIC SIZES ARE MILLIMETERS.