

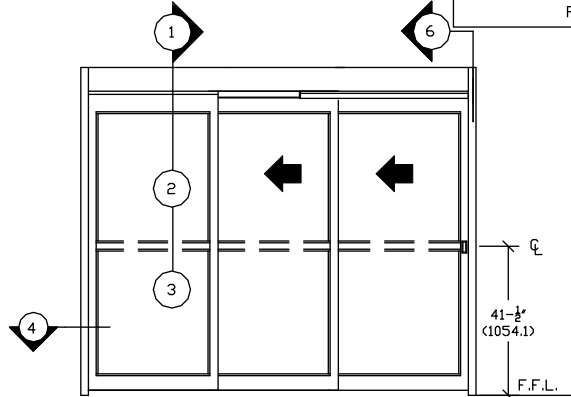
ASSA ABLOY

ASSA ABLOY Entrance Systems
1900 Airport Road
Monroe, NC 28110
Phone: 1-866-237-2687
specdeskna.besam@assaabloy.com

BESAM VERSAMAX ICU

TELESCOPIC SLIDING DOOR SYSTEM
WITH SMOKE SEAL KIT

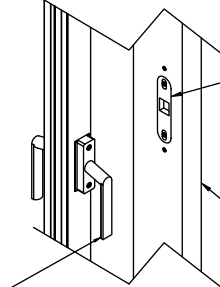
Patent Pending Design



EXTERIOR ELEVATION

LEFT HAND SLIDE (R.H.S. OPPOSITE)

BREAKOUT SIDE

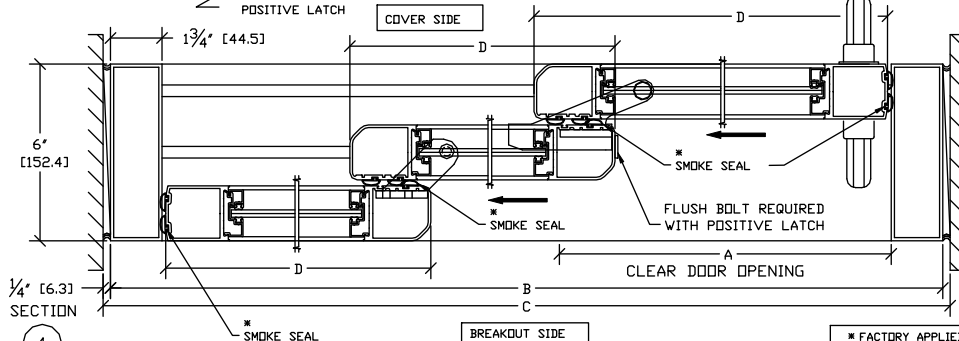


FLUSH STAINLESS
STEEL LATCH STRIKE
WITH INTERNAL DUST
CAP

SINGLE SLIDE
RECEIVER JAMB

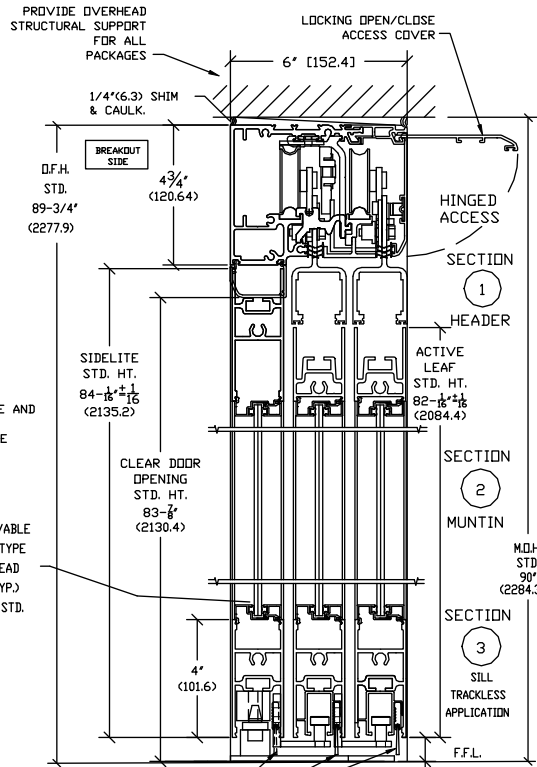
ACTIVE LEAF WITH
POSITIVE LATCH

COVER SIDE



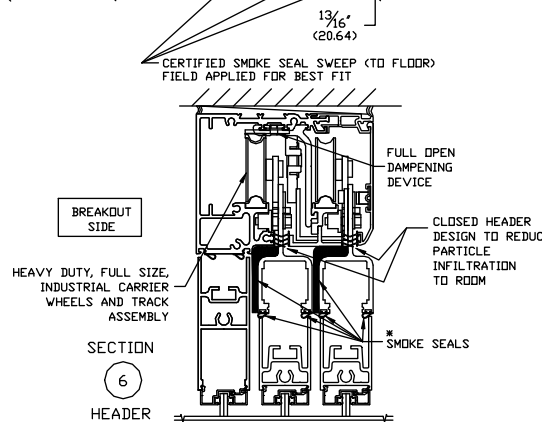
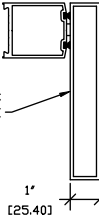
LEFT HAND SHOWN (RIGHT HAND OPPOSITE)

NOTE: DRAWING IS DIMENSIONED IN BOTH ENGLISH AND METRIC.
REF. AS FOLLOWS: 1"=25.4; ALL METRIC SIZES ARE MILLIMETERS.



NON REMOVABLE
SECURITY TYPE
GLAZING BEAD
SYSTEM (TYP.)
1/4" (6.3) STD.

OPTIONAL 1" JAMBS
AVAILABLE



BREAKOUT SIDE

HEAVY DUTY, FULL SIZE,
INDUSTRIAL CARRIER
WHEELS AND TRACK
ASSEMBLY

SECTION
6
HEADER

* FACTORY APPLIED SEALS USED ON THIS SYSTEM TO SLOW OR RESTRICT PASSAGE OF SMOKE
ARE CERTIFIED UNDER BHMA.
SMOKE TESTED TO MEET REQUIREMENTS OF STANDARDS: UL1784, ANSI/NFPA105 2007,
UBC7-2, PART 11 & B5476
PRESSURE/FIRE TESTED TO MEET REQUIREMENTS: UL10B, UL10C, UBC7-2 PART 1 & B5476

THE STANDARD PACKAGE CONSISTS OF:
THE HEADER, FRAME, NARROW STILE DOOR(S) & SIDELITE(S),
POSITIVE LATCH, GLASS STOPS & BLOCKS FOR 1/4" (6.3) TEMPERED GLASS,
BREAKAWAY, SMOKE SEALS, FLUSH BOLT, VERTICAL WEATHER-STRIPPING, HEAVY
DUTY FULL SIZE INDUSTRIAL CARRIER WHEELS AND TRACK ASSEMBLY,
CONCEALED HEAVY DUTY PIVOTS, TAMPER PROOF COVER LATCHES, FULL OPEN
DAMPENING DEVICE AND REPLACEMENT PARTS COMMON TO STANDARD DOOR LINE.

STANDARD FINISH:
CLEAR - AA-M122A44, CLASS 1, .018 MM.
SPECIAL FINISHES ARE AVAILABLE.

OPTIONS:
SLOPED GLASS FOR CLEAN ROOM ENVIRONMENTS, MUNTINS,
1" WIDE JAMBS, SELF CLOSING, ANTI-STATIC, CLOSING DAMPENER,
BREAKOUT DAMPENER WITH 90° STOPS, 7" & 10" BOTTOM RAILS AND
NURSE ASSIST MAGNETIC CATCHES.

DOOR PACKAGE WITH 1 3/4" JAMBS

MODEL NO.	CLEAR DOOR OPENING	OVERALL FRAME WIDTH	MASONRY OPENING WIDTH	ACTIVE & SIDELITE WIDTH
	A	B	C	D
ICU-TE-3F80-8	53 11/16" (1363.6)	96" (2438.4)	96 1/2" (2451.1)	32 9/16" (827.1)
ICU-TE-3F80-10	69 11/16" (1770.1)	120" (3048.0)	120 1/2" (3060.7)	40 9/16" (1030.3)
ICU-TE-3F80-12	85 11/16" (2176.5)	144" (3657.6)	144 1/2" (3670.3)	48 9/16" (1233.5)
KEY	2B/3-10 5/16" (268.3)	C - 1/2" (12.7)	B + 1/2" (12.7)	B/3+9/16" (14.3)

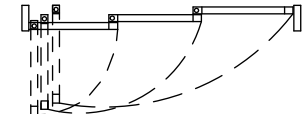
CONSULT FACTORY FOR ALL CUSTOM CONFIGURATION SIZES OR SIZES OVER 12'.

DOOR PACKAGE WITH 1" JAMBS

MODEL NO.	CLEAR DOOR OPENING	OVERALL FRAME WIDTH	MASONRY OPENING WIDTH	ACTIVE & SIDELITE WIDTH
	A	B	C	D
ICU-TE-3F80-8	54 11/16" (1389.0)	96" (2438.4)	96 1/2" (2451.1)	33 1/16" (839.8)
ICU-TE-3F80-10	70 11/16" (1795.5)	120" (3048.0)	120 1/2" (3060.7)	41 1/16" (1043.0)
ICU-TE-3F80-12	86 11/16" (2201.9)	144" (3657.6)	144 1/2" (3670.3)	49 1/16" (1246.2)
KEY	2B/3-9 5/16" (236.5)	C - 1/2" (12.7)	B + 1/2" (12.7)	B/3+1 1/16" (26.9)

CONSULT FACTORY FOR ALL CUSTOM CONFIGURATION SIZES OR SIZES OVER 12'.

SURFACE/RECESSED TRACK APPLICATIONS



L.H. SLIDE

VIEW FROM BREAK OUT SIDE

DOORS WILL BREAKOUT FROM ANY POSITION FOR
SURFACE & RECESSED TRACK APPLICATIONS

TRACKLESS APPLICATIONS

DOORS WILL ONLY BREAK OUT WHEN IN THE FULLY OPEN
POSITION FOR TRACKLESS APPLICATIONS

DWG NO.	US23-3400-32
DRN BY	SS
DATE	3/29/10
CHK BY	DW
DATE	3/29/10
REV.	H
DATE	5/29/14

ASSA ABLOY