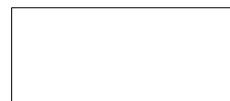


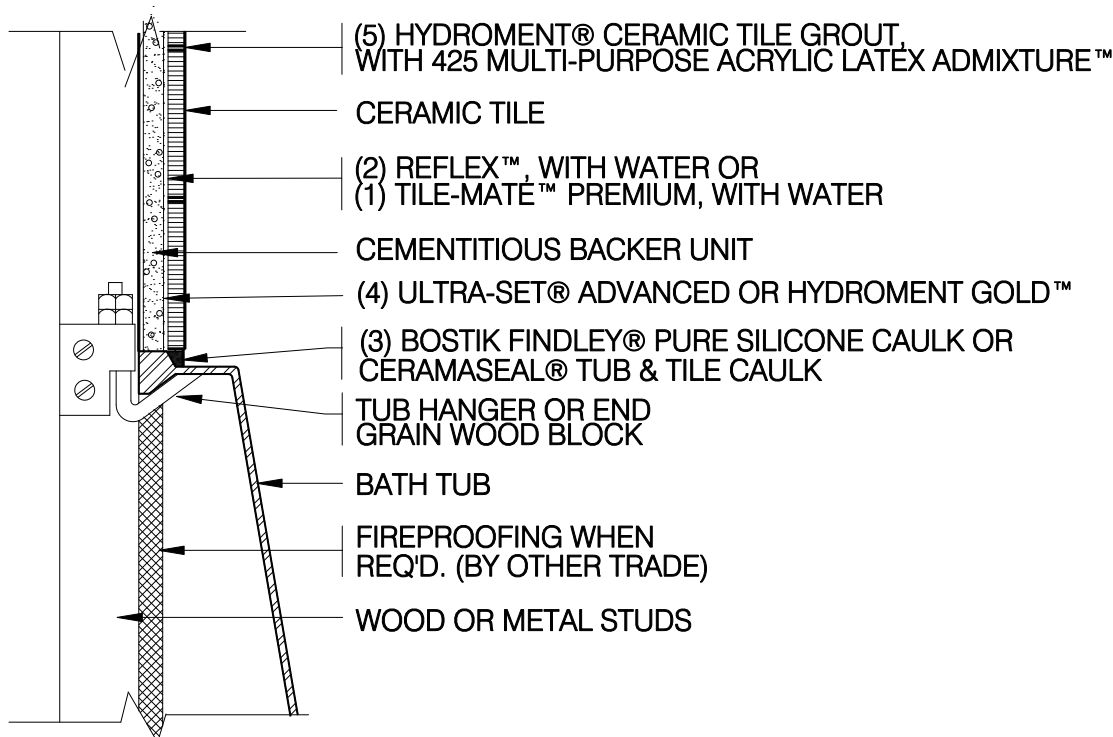
BATHTUB WALLS

Wood or Metal Studs

HB412



Cement Backer Board/ Underlayment



- (5) Hydroment® Grout Options:
 Hydroment Ceramic Tile Grout (sanded), with 425 Multi-Purpose Acrylic Latex Admixture™
 Hydroment Ceramic Tile Grout (sanded), with water
 Hydroment Plus™ Ceramic Tile Grout (sanded), with water
 Hydroment Dry Tile Grout (unsanded), with 425 Multi-Purpose Acrylic Latex Admixture
 Hydroment Dry Tile Grout (unsanded), with water
- (4) Hydroment Waterproof Membrane Options:
 Ultra-Set® Advanced/ Ultra-Set
 Hydroment Gold™
 Black-Top 90210™
- (3) Hydroment Sealant Options:
 CeramaSeal® Tub & Tile Caulk
 Bostik Findley® Pure Silicone Caulk
 Chem-Calk® 900
- (2) Hydroment Latex Portland Cement Mortar Options:
 ReFlex™, with water
 Single-Flex FS™, with 425 Multi-Purpose Acrylic Latex Admixture
 Single-Flex FS, with water
 Single-Flex™, with water
 Hydroment PM™, with water
 Tile-Mate™ Premium, with 447 Flex-A-Lastic™
 Tile-Mate Premium, with 425 Multi-Purpose Acrylic Latex Admixture
 Tile-Mate Floor & Wall, with 447 Flex-A-Lastic
 Tile-Mate Floor & Wall, with 425 Multi-Purpose Acrylic Latex Admixture
- (1) Hydroment Dry-Set Mortar Options (Do not use to bond directly to membrane):
 Tile-Mate Premium, with water
 Tile-Mate Floor & Wall, with water

These drawings have been taken from the Tile Council of America's "Handbook for Ceramic Tile Installation". For your convenience, Hydroment® Product Options have been substituted for the TCA's generic product descriptions. Please refer to the Handbook for complete information!