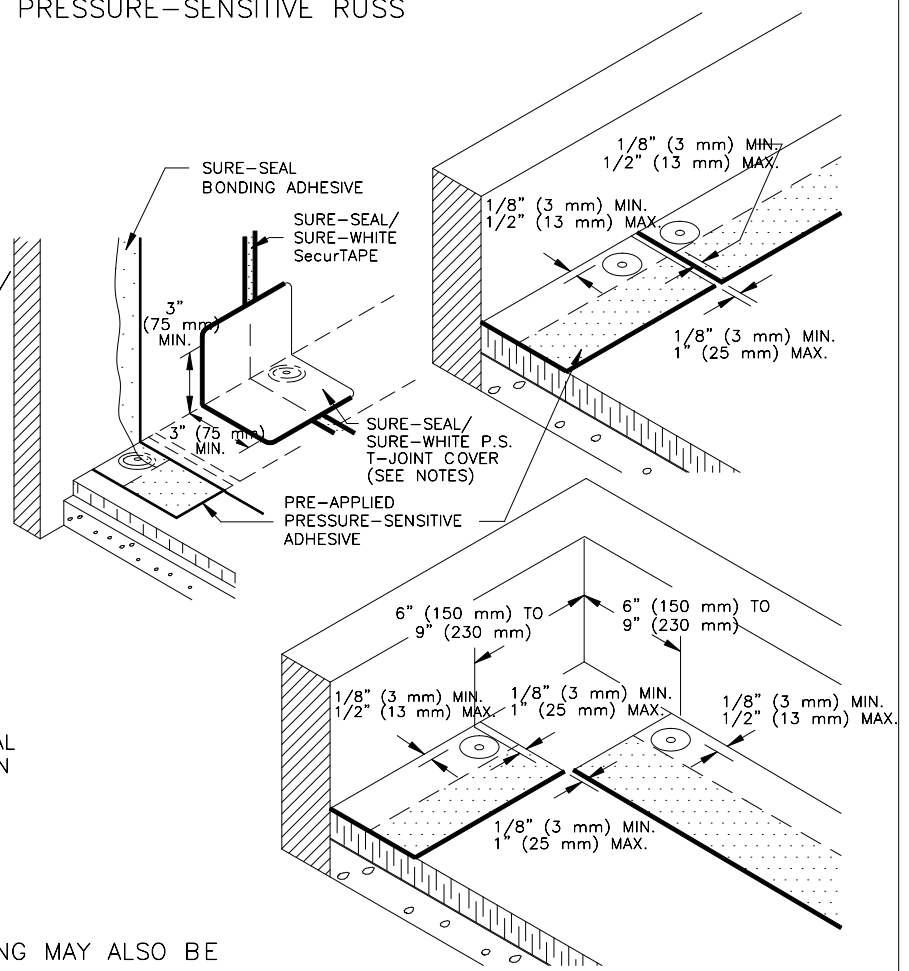
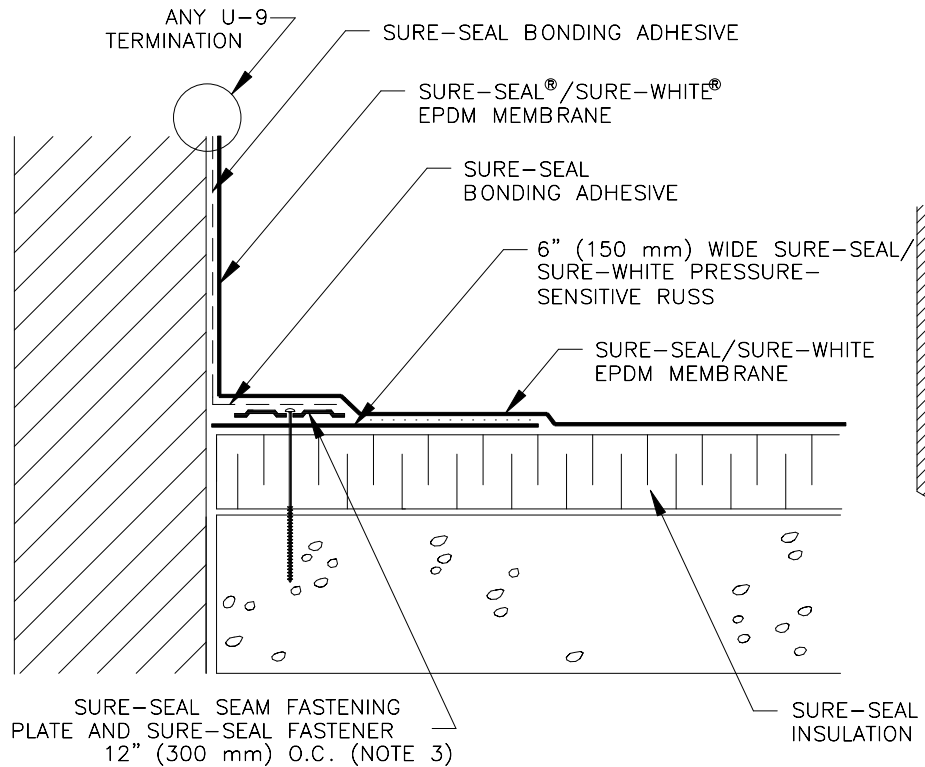


SURE-SEAL PRIMER MUST BE APPLIED TO BACK SIDE OF EPDM PRIOR TO ADHERING MEMBRANE TO PRESSURE-SENSITIVE RUSS



NOTES:

1. FOR CORNER APPLICATION, SEE DETAIL U-15-D.
2. 6" (150 mm) WIDE PRESSURE-SENSITIVE ELASTOFORM FLASHING MAY ALSO BE CENTERED OVER FIELD SPLICE AT ANGLE CHANGE.
3. POLYMER SEAM PLATES ARE REQUIRED IN LIEU OF SEAM FASTENING PLATES FOR MECHANICALLY-FASTENED ROOFING SYSTEMS OVER STEEL DECKS.

PS-12-C
WALL FLASHING WITH PRESSURE-SENSITIVE RUSS STRIP

