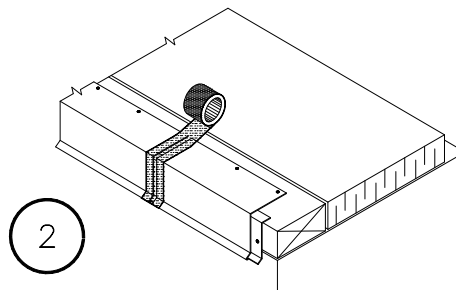
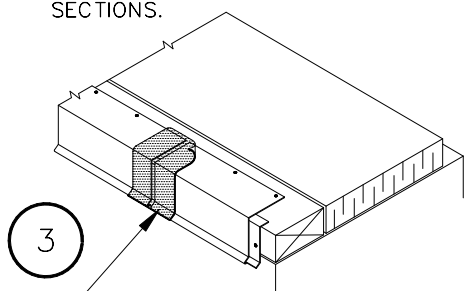


1. INSTALL CONTINUOUS CLEAT, PER DETAIL SFU-1F.

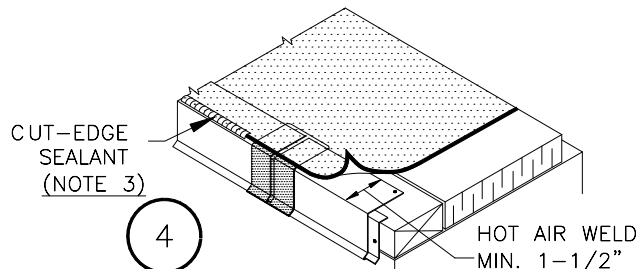
2. INSTALL SURE-FLEX COATED METAL WITH 1/8" - 1/4" (3 - 6 mm) JOINTS BETWEEN ADJOINING SECTIONS.



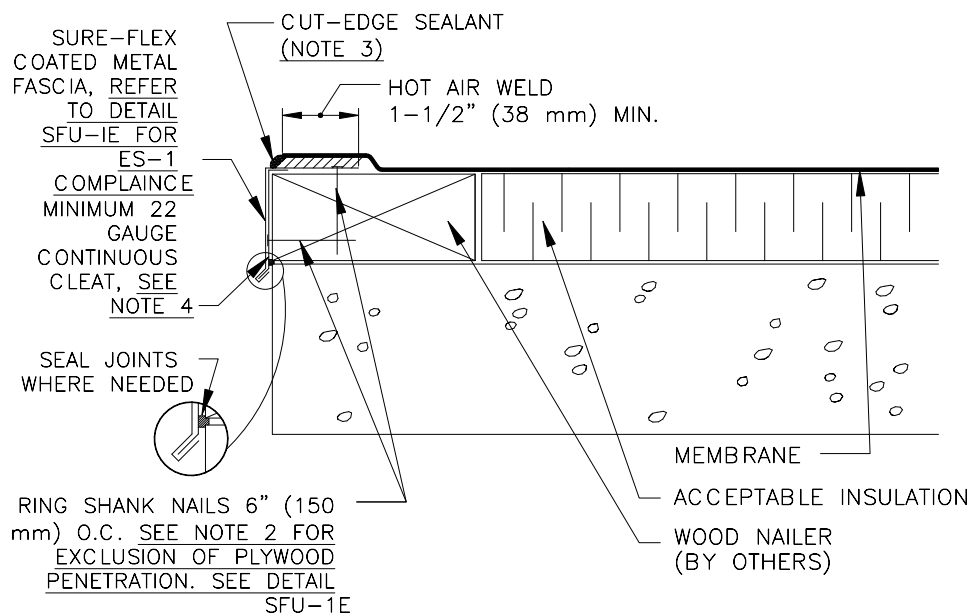
INSTALL 2" (50 mm) WIDE FOIL GRIP ALUMINUM TAPE OVER JOINTS IN SURE-FLEX COATED METAL & COMPLETELY COVER THE JOINT.



HEAT WELD 6" (150 mm) WIDE PIECE OF REINFORCED MEMBRANE OVER JOINT.



POSITION FIELD MEMBRANE AND HEAT WELD TO SURE-FLEX COATED METAL A MINIMUM OF 1-1/2" (40 mm) AS SHOWN.



NOTES:

1. FASTENERS USED TO ATTACH SURE-FLEX COATED METAL MUST PENETRATE WOOD NAILERS A MINIMUM OF 1-1/4" (32 mm).
2. IF 1/2" (13 mm) PLYWOOD IS USED AS THE TOP NAILER, FASTENERS MUST PENETRATE A MINIMUM OF 1-1/4" INTO NAILER BELOW.
3. APPROXIMATELY 1/8" (3 mm) DIAMETER BEAD OF CUT-EDGE SEALANT IS REQUIRED ON CUT EDGES OF REINFORCED MEMBRANE.
4. REFER TO ES-COMPLIANCE NOTED IN TABLE NO. 1 ON DETAIL SFU-1E.

COATED METAL DRIP EDGE

SURE-FLEX UNIVERSAL - 1D