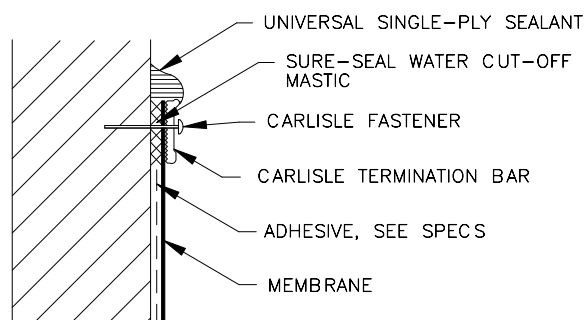
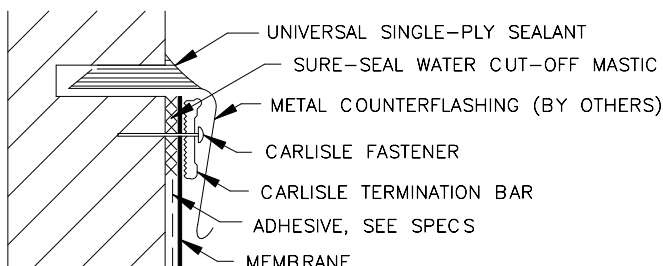


SURE-FLEX UNIVERSAL-9C
COUNTERFLASHING TERMINATION

NOTES:

1. COUNTERFLASHING SHALL BE ELEVATED ABOVE PONDED WATER.
2. NOT FOR USE ON 15 OR 20 YEAR WARRANTY PROJECTS (REFER TO SURE-FLEX UNIVERSAL 9F DETAIL).

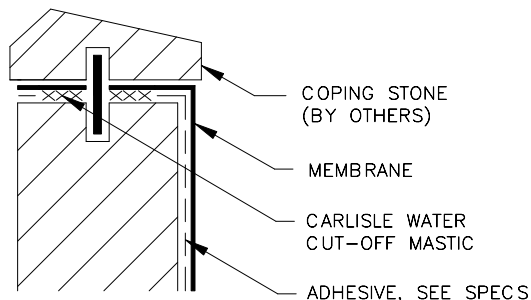
FOR USE ON TOTAL SYSTEM WARRANTY PROJECTS.
TERMINATION BAR IS NOT REQUIRED ON 5 OR 10 YEAR WARRANTY PROJECTS (REFER TO SURE-FLEX UNIVERSAL-9C DETAIL)



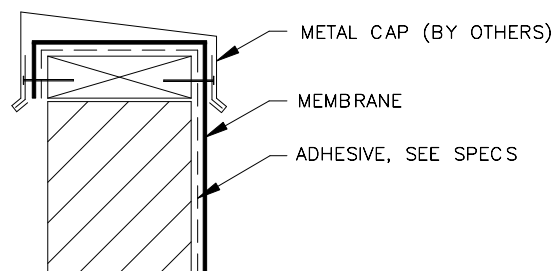
1. APPLY ON HARD SMOOTH SURFACE ONLY; NOT FOR USE ON WOOD.
2. DO NOT WRAP COMPRESSION TERMINATION AROUND CORNERS.
3. FASTENERS OF METAL BAR MUST PROVIDE CONSTANT COMPRESSION ON WATER CUT-OFF MASTIC.
4. ALLOW 1/4" to 1/2" (6 to 13 mm) SPACING BETWEEN CONSECUTIVE LENGTHS OF TERMINATION BAR.

SURE-FLEX UNIVERSAL-9F
MECHANICAL TERMINATION

SURE-FLEX UNIVERSAL-9D
MECHANICAL TERMINATION



SURE-FLEX UNIVERSAL-9E
COPING STONE TERMINATION



SURE-FLEX UNIVERSAL-9B
CAP FLASHING TERMINATION