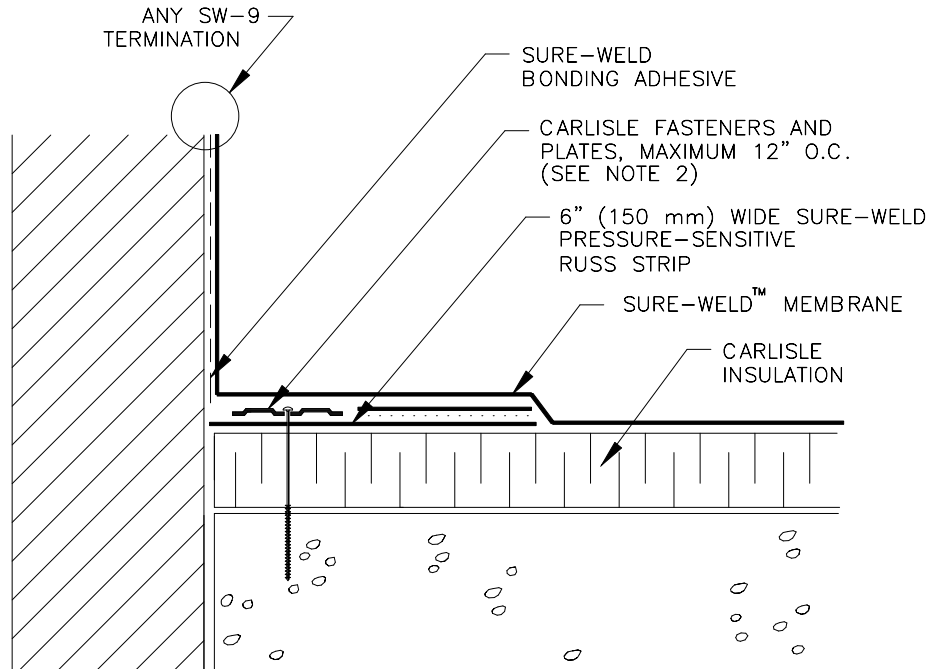


Carlisle SynTec Incorporated

Sure-Weld® ROOFING SYSTEM

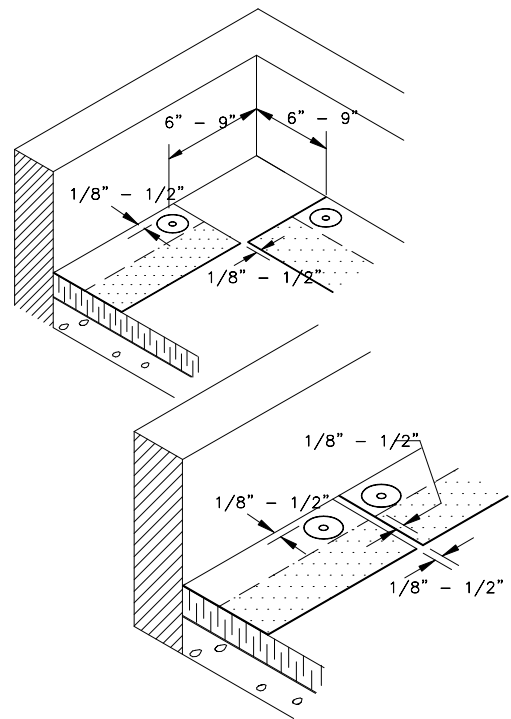
CREASE MEMBRANE AT ANGLE CHANGE TO
LIMIT BRIDGING TO 3/4" (19 mm) MAXIMUM



SURE-SEAL HP-250 PRIMER MUST BE APPLIED TO BACK SIDE OF MEMBRANE
PRIOR TO ADHERING MEMBRANE TO PRESSURE-SENSITIVE RUSS

NOTES:

1. FOR CORNER APPLICATION, SEE DETAIL SW-15E.
2. ON MECHANICALLY FASTENED SYSTEMS, HP-X FASTENERS AND PIRANHA PLATES OR HP-XTRA FASTENERS AND PIRANHA XTRA PLATES ARE REQUIRED OVER STEEL AND WOOD DECKS. ON CONCRETE DECKS, CD-10, OR HD 14-10 FASTENERS ARE USED WITH PIRANHA PLATES.
3. WHEN COUNTER-FLASHING IS USED FOR TERMINATION, BONDING ADHESIVE IS NOT REQUIRED WHEN FLASHING HEIGHT IS 12" (300 mm) OR LESS. WHEN COPING OR TERMINATION BAR IS USED, ADHESIVE MAY BE ELIMINATED WHEN FLASHING HEIGHT IS 18" (500 mm) OR LESS.



WALL FLASHING/PRESSURE-SENSITIVE RUSS

SW-12B