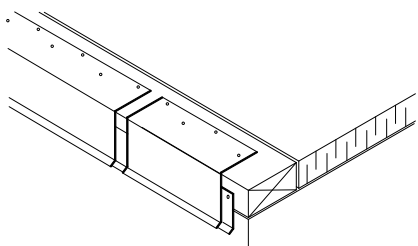
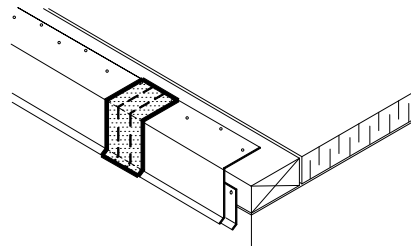


Carlisle SynTec Incorporated

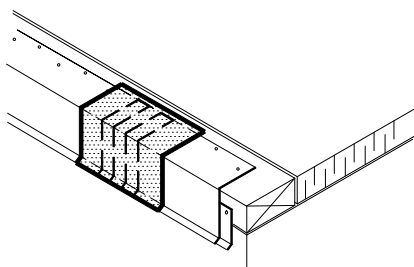
Sure-Weld™ ROOFING SYSTEM



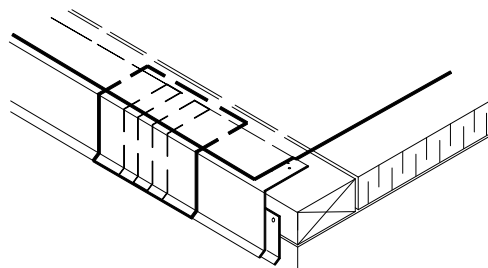
1. INSTALL SURE-WELD COATED METAL WITH 1/8" - 1/4" (3 - 6 mm) JOINTS BETWEEN ADJOINING SECTIONS.



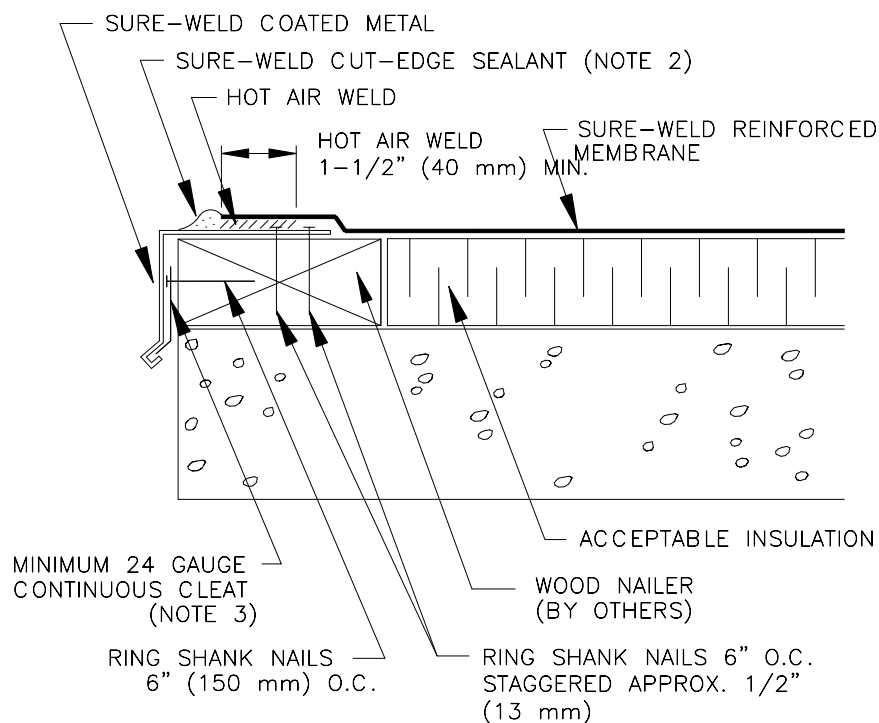
2. INSTALL 2" (50 mm) WIDE FOIL GRIP ALUMINUM TAPE OVER JOINTS IN SURE-WELD COATED METAL.



3. HEAT WELD 6" (150 mm) WIDE PIECE OF SURE-WELD NON-REINFORCED MEMBRANE OVER JOINT.



4. POSITION SURE-WELD REINFORCED MEMBRANE AND HEAT WELD TO SURE-WELD COATED METAL A MINIMUM OF 1-1/2" (40 mm) AS SHOWN BELOW.



NOTES:

1. FASTENERS USED TO ATTACH SURE-WELD COATED METAL MUST PENETRATE WOOD NAILERS A MINIMUM OF 1-1/4" (32 mm). IF 1/2" (13 mm) PLYWOOD IS USED AS THE TOP NAILER, FASTENERS MUST PENETRATE A MINIMUM OF 1-1/4" INTO NAILER BELOW.
2. APPROXIMATELY 1/8" (3 mm) DIAMETER BEAD OF CUT-EDGE SEALANT IS REQUIRED ON CUT EDGES OF SURE-WELD REINFORCED MEMBRANE.
3. GAUGE OF CONTINUOUS CLEAT IS DEPENDENT ON THE FASCIA HEIGHT AS SHOWN ON THE CHART BELOW.

MAX. FASCIA LENGTH	GAUGE OF CONT. CLEAT
4" (100 mm)	24 GAUGE (.59 mm)
6" (150 mm)	22 GAUGE (.75 mm)
8" (200 mm)	20 GAUGE (.91 mm)

COATED METAL DRIP EDGE

SW-1D