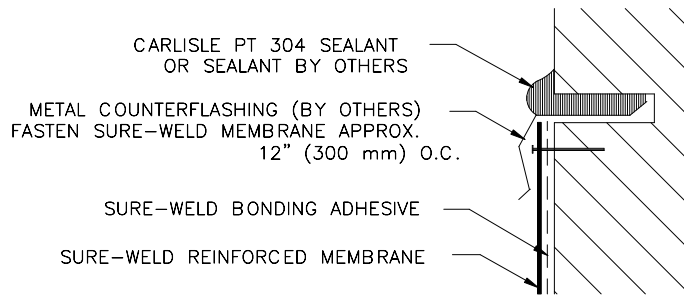


Carlisle SynTec Incorporated

Sure-Weld® ROOFING SYSTEM

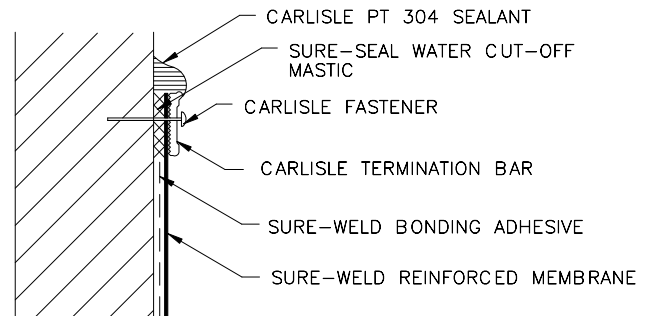
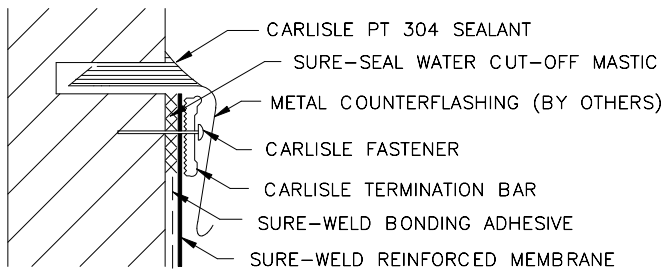


NOTES:

1. COUNTERFLASHING SHALL BE ELEVATED ABOVE PONDED WATER.
2. NOT FOR USE ON 15 YEAR WARRANTY PROJECTS (REFER TO DETAIL SW-9F).
3. BONDING ADHESIVE IS NOT REQUIRED WHEN FLASHING HEIGHT IS 12" (300 mm) OR LESS.

SW-9C COUNTERFLASHING TERMINATION

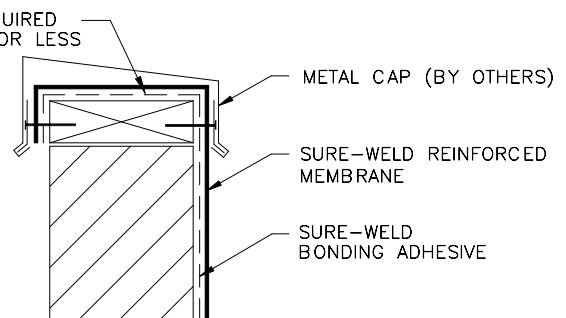
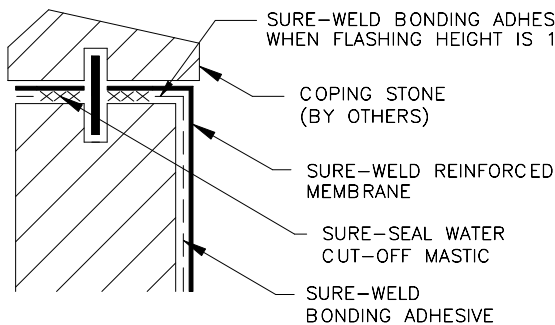
FOR USE ON 15 YEAR WARRANTY PROJECTS.
TERMINATION BAR IS NOT REQUIRED ON 10 YEAR WARRANTY PROJECTS (REFER TO DETAIL SW-9C)



1. APPLY ON HARD SMOOTH SURFACE ONLY; NOT FOR USE ON WOOD.
2. DO NOT WRAP COMPRESSION TERMINATION AROUND CORNERS.
3. FASTENERS OF METAL BAR MUST PROVIDE CONSTANT COMPRESSION ON WATER CUT-OFF MASTIC.
4. ALLOW 1/4" to 1/2" (6 to 13 mm) SPACING BETWEEN CONSECUTIVE LENGTHS OF TERMINATION BAR.
5. BONDING ADHESIVE IS NOT REQUIRED WHEN FLASHING IS 18" (500 mm) OR LESS.

SW-9F MECHANICAL TERMINATION

SW-9D MECHANICAL TERMINATION



SW-9E COPING STONE TERMINATION

SW-9B CAP FLASHING TERMINATION

FLASHING TERMINATIONS

SW-9