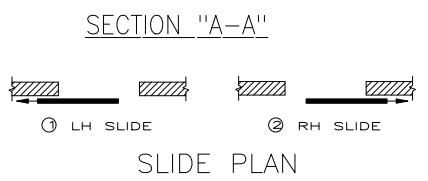
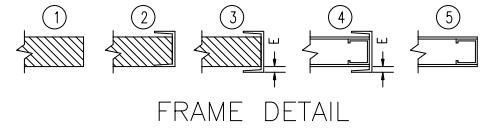


- NOTES**
- BINDERS ARE ATTACHED TO OPENING WITH 3/8" x 1" THREADCUTTING SCREWS FOR STEEL JAMBS OR 3/8" KWIK BOLTS FOR MASONRY JAMBS.
  - FOR ALTERNATE CLOSING SYSTEMS (WEIGHTS TO THE REAR, REEL TO THE FRONT, AND REEL TO THE REAR) SEE "SHEET 1000ALT".

RIGHT HAND SLIDE SHOWN  
 LEFT HAND SLIDE OPPOSITE



SAINO SERIES 1000  
 SAINO SERIES 2000, 250 F. TEMP. RISE  
 MANUAL DOOR WITH WEIGHT CLOSING SYSTEM  
 U.L. LABELED MODULAR DOORS



TAG MARK	DOOR TYPE	OPENING		SLIDE PLAN	FINISH DOOR		NO. OF PANELS	WALL THICKNESS	FRAME DETAIL	E	WEIGHTS		REEL		CLEARANCE REQ'D			U.L. LABEL	CRUSH PLATES	TRACK-HOOD	WEATHER-STRIPPING	LOCKING SYSTEM	REMARKS
		WIDTH	HEIGHT		WIDTH	HEIGHT					FRONT	REAR	FRONT	REAR	CLOS. SIDE	OPNG. SIDE	HEAD						
							JOB					CUSTOMER NO:			NO. PRINTS		FOR		DATE		REVISED		
							SOLD TO					CHASE ORDER NO:											
												DRAWN BY:											
												SHEET ___ OF ___											

Tel: (800) 543-4455  
 www.chasedoors.com