

ATTACH SLIP TRACK TO STRUCTURE  
 USING: (2)0.145"Ø P.D.F.'s @ EACH  
 STUD LOCATION AND (4)0.145"Ø  
 P.D.F.'s @ EACH JAMB LOCATION.

DEEP LEG RUNNER TRACK.  
 MEMBER SIZE AS REQ'D  
 PER DESIGN.

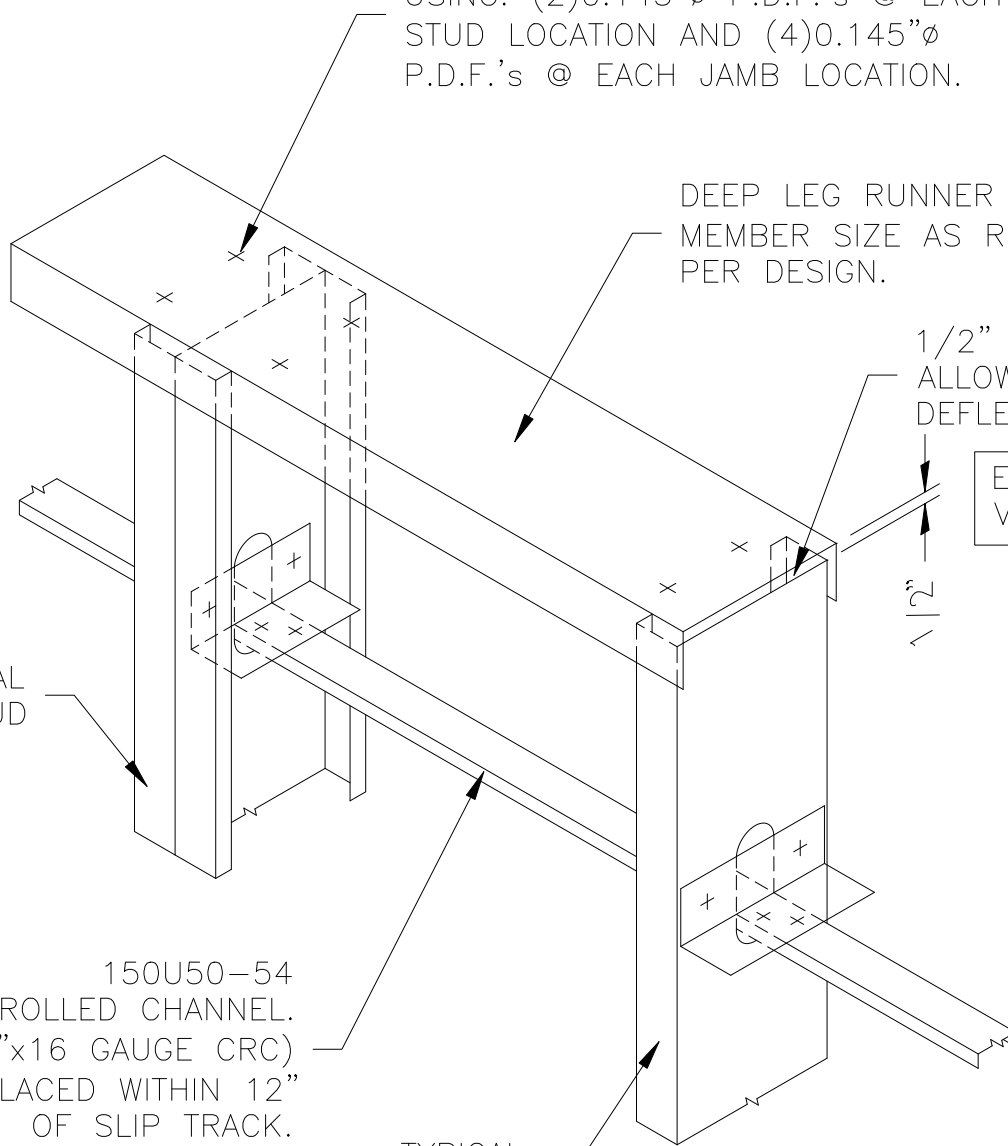
1/2" GAP TO  
 ALLOW FOR VERTICAL  
 DEFLECTION.

E.O.R.:  
 VERIFY GAP DEPTH

TYPICAL  
 JAMB STUD

150U50-54  
 COLD ROLLED CHANNEL.  
 (1-1/2"x16 GAUGE CRC)  
 TO BE PLACED WITHIN 12"  
 OF SLIP TRACK.

TYPICAL  
 WALL STUD



**CLARKWESTERN**  
 DESIGN

East Coast - Atlanta, GA  
 20 Mansell Court East, Suite 350B  
 Roswell, GA 30076

West Coast - San Diego, CA  
 2035 Corte Del Nogal, Suite 165  
 Carlsbad, CA 92011

Toll Free Phone: 877-832-3206

## SLIP TRACK DETAIL

CURTAIN WALL STUD w/ LATERAL BRACING  
 WITHIN 12" OF SLIP TRACK