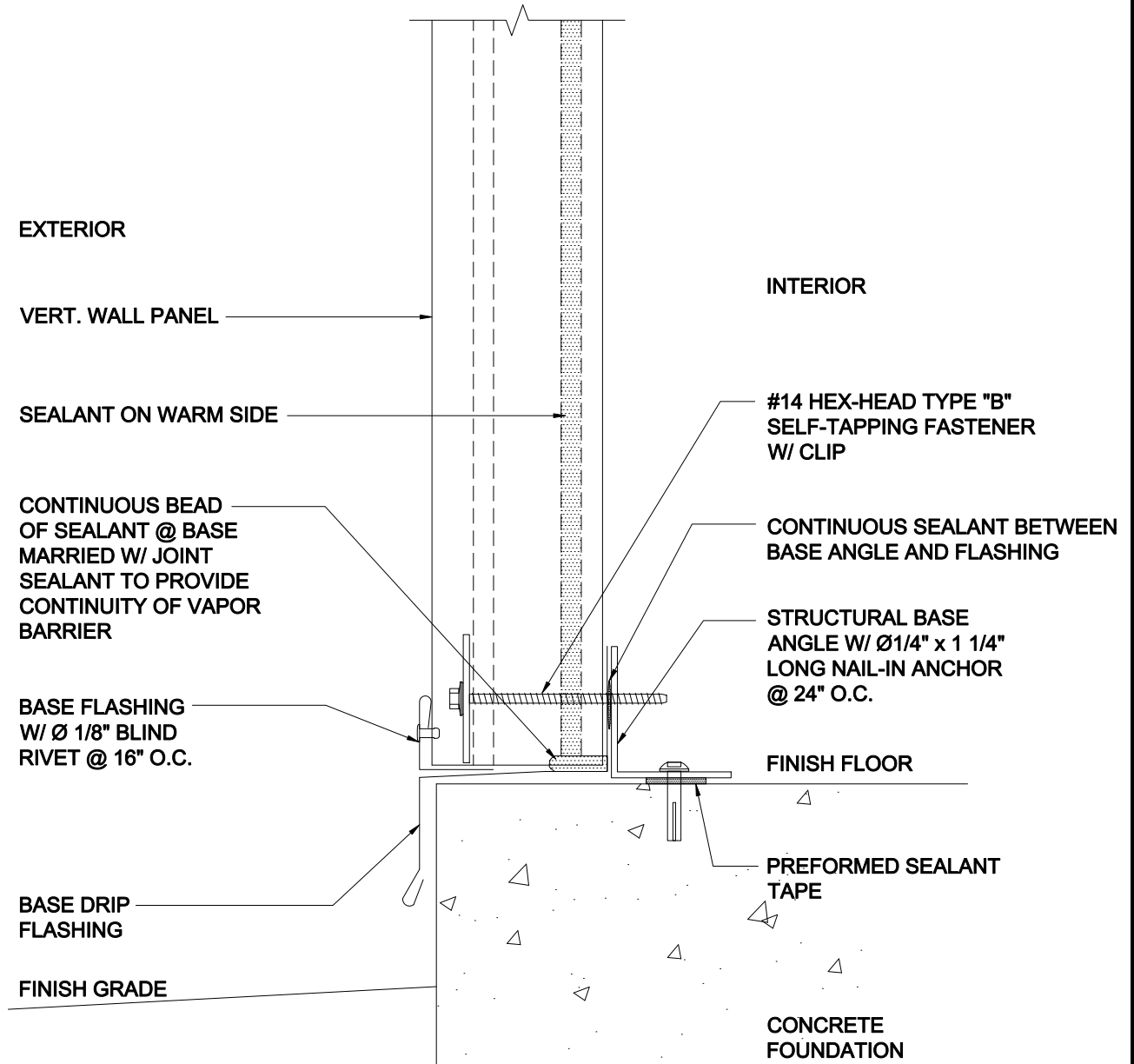


KINGSPAN "KS" SERIES PANEL



NOTES:

1. CONSULT FACTORY FOR ALLOWABLE LOADS, SPANS AND FASTENING DETAILS.
2. CONSULT FACTORY ON AVAILABILITY OF VARIOUS FINISHES AND FACING MATERIALS.

**PANEL BASE DETAIL
VERTICAL PANEL**

DETAIL #: C1

DATE: JAN 2007

Kingspan Drafting & Engineering Department\LD001\Kingspan Inverted Panels