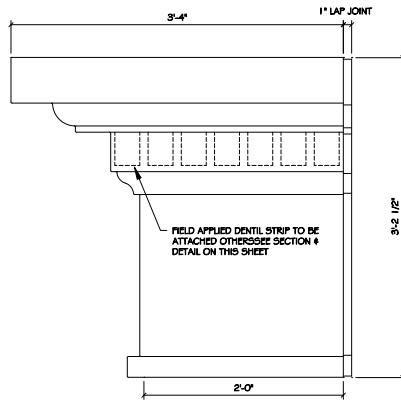
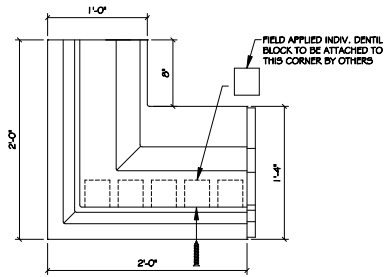


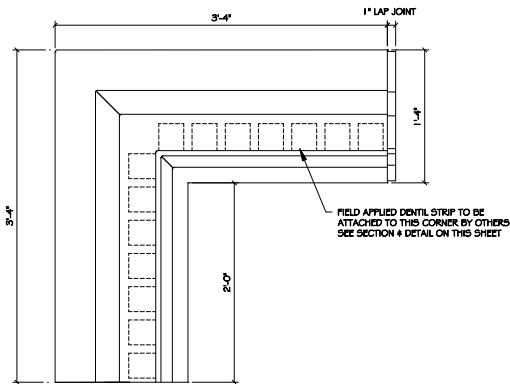
1
6 ELEV. CORNICE "C" TO "D"
INSIDE TRANSITION CORNER
SCALE: 1 1/2" = 1'-0"



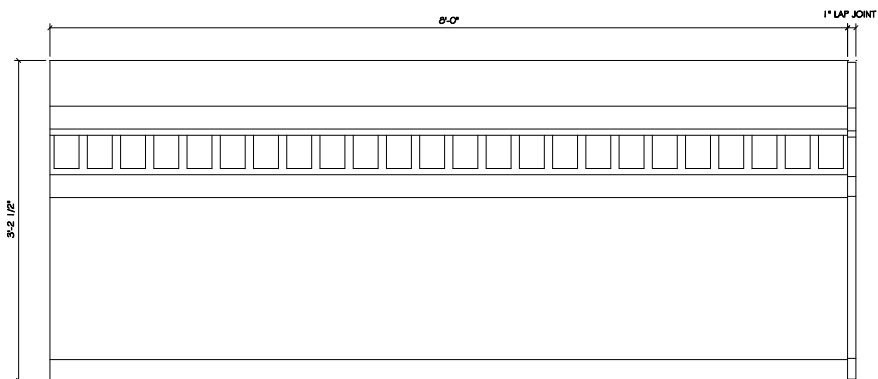
4
6 CORNICE "C" OUTSIDE CORNER
SCALE: 1 1/2" = 1'-0"



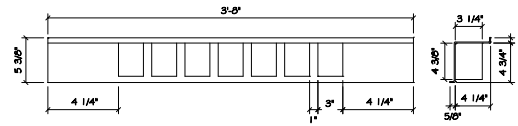
2
6 CORNICE "C" TO "D" INSIDE
TRANSITION CORNER FROM BELOW
SCALE: 1 1/2" = 1'-0"



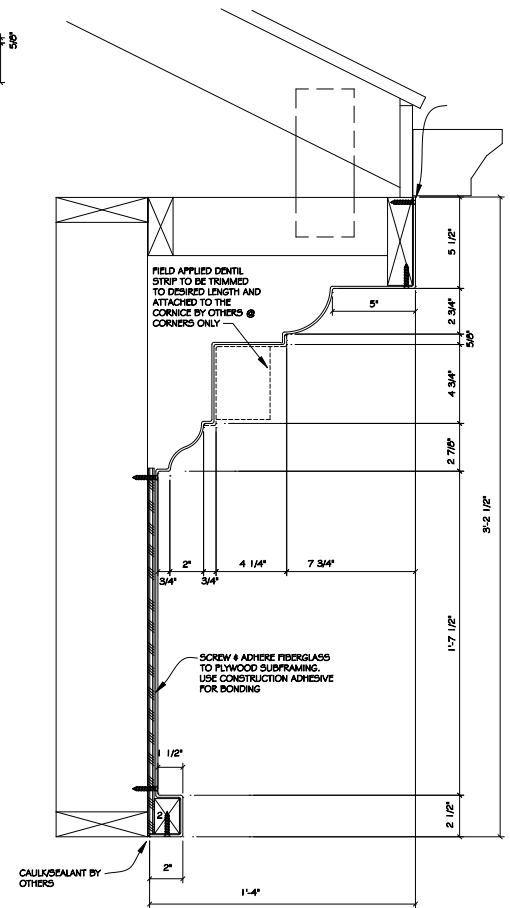
5
6 CORNICE "C" OUTSIDE CORNER
SCALE: 1 1/2" = 1'-0"



3
6 CUSTOM CORNICE "C" SECTION
SCALE: 3" = 1'-0"



7
6 DENTIL STRIP FOR CORNERS
SCALE: 1 1/2" = 1'-0"



B
6 SECTION THRU CR-349
SCALE: 3" = 1'-0"