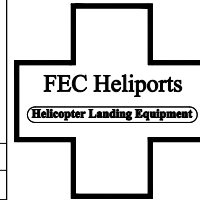


THIS DOCUMENT IS THE PROPERTY OF FEC HELIPORTS, A DIVISION OF FEDERAL EQUIPMENT COMPANY. CREATION DATE: 10/10/07. ANY INFORMATION CONTAINED ON THIS DOCUMENT SHALL NOT BE DISCLOSED TO OTHERS UNDER THE UNLESS SPECIFICALLY OR SEPARATELY PROVIDED FOR BY WRITING WITHOUT THE EXPRESSED WRITTEN PERMISSION OF FEC HELIPORTS, A DIVISION OF FEDERAL EQUIPMENT COMPANY.

REVISION BLOCK		
REVISION:	DATE:	REVISION NOTES:
A	9/12/07	ADDED FOUNDATION FOR THREE COLOR BEACON AND LIGHTED WINDCONE ASST.

BUFFALO GENERAL HOSPITAL  
100 HIGH ST.  
BUFFALO, NY 14203



A Division of  
Federal Equipment Company,  
5298 River Rd.  
Cincinnati, Ohio 45233  
(513) 621-5260  
(513) 621-0524 Fax  
www.FECHeliports.com

DRAWN BY: JDB  
CHECKED BY: JUS

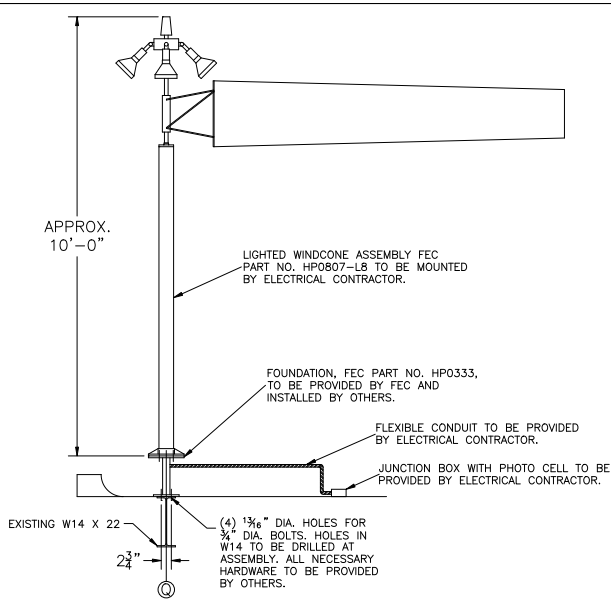
JOB NO. 9216

DATE: 7/18/07

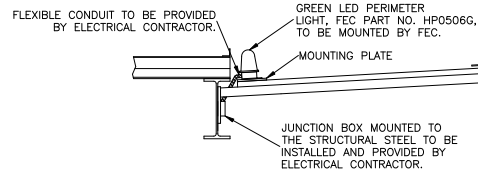
ELECTRICAL  
DETAILS  
SCALE: NONE

DWG SIZE: D A

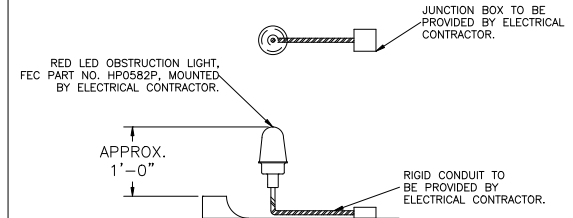
E-2



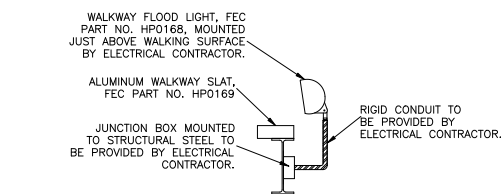
DETAIL 1 TYPICAL LIGHTED WINDCONE CONNECTION



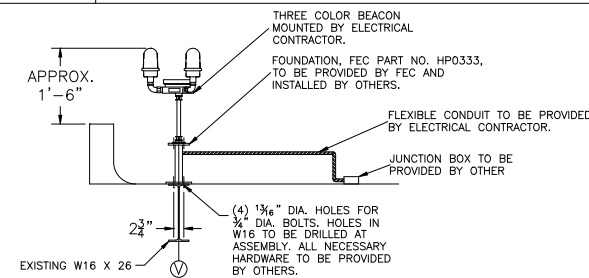
DETAIL 2 TYPICAL PERIMETER LIGHT CONNECTION



DETAIL 3 TYPICAL OBSTRUCTION LIGHT CONNECTION



DETAIL 4 TYPICAL WALKWAY FLOOD LIGHT CONNECTION



DETAIL 5 TYPICAL THREE COLOR BEACON CONNECTION

NOTES:

1. THE ELECTRICAL CONTRACTOR SHALL FURNISH, INSTALL, AND SIZE ALL SLEEVES, HOLES, CORES, PATCHING, SLOTS, ANCHORS, BRACKETS, SUPPORTS, JUNCTION BOXES, PULL BOXES, AND OTHER APPURTENANCES NECESSARY TO EXECUTE THE CONTRACT DOCUMENTS COMPLETE. SOME OF THESE ITEMS MAY BE SHOWN ON THE DRAWING FOR CLARITY OR DESIGN PREFERENCE. HOWEVER, NOT ALL OF THE ITEMS, NECESSARY FOR COMPLETE EXECUTION AND INSTALLATION, ARE SHOWN.

ELECTRICAL SYMBOLS

REFERENCE NO.	LIGHTING PLAN	ONE LINE	DESCRIPTION	WATTAGE	VOLTAGE
1		PL	PERIMETER LIGHT	9 W	120 V, 1ϕ
2		OL	OBSTRUCTION LIGHT	9 W	120 V, 1ϕ
3		TCB	THREE COLOR BEACON	1500 W	120 V, 1ϕ
4		LW	LIGHTED WINDCONE	269 W	120 V, 1ϕ
5		WF	WALKWAY FLOOD LIGHT	150 W	120 V, 1ϕ
6		JB	JUNCTION BOX	N/A	N/A
7		HOLS	HIGH OIL LEVEL SENSOR	N/A	N/A
8		CB	BREAKER, XX INDICATES TRIP RATING	N/A	N/A
9		PE	PHOTOCELL	N/A	N/A
10		RR	RADIO RECEIVER	N/A	N/A
11		PS	PULL STATION	N/A	N/A

ELECTRICAL SYMBOLS

REFERENCE NO.	LIGHTING PLAN	ONE LINE	DESCRIPTION	WATTAGE	VOLTAGE
12		FSH	FUEL/WATER SEPARATOR HEATER	5000 W	240 V, 1ϕ
13		RL	RED LIGHT	N/A	120 V, 1ϕ
14		GL	GREEN LIGHT	N/A	120 V, 1ϕ
15		MX	MOTOR NUMBER X	9 AMPS	480 V, 3ϕ
16		OLX OR MX	NORMALLY CLOSED CONTACT	N/A	N/A
17		OLX OR MX	NORMALLY OPEN CONTACT	N/A	N/A
18		CV	CONTROL VALVE	N/A	24 VDC
19		XX	TERMINAL BLOCK IN CONTROL BOX FOR SNOWMELT SYSTEM	N/A	
20		LRX	LIGHTING RELAY X	N/A	N/A