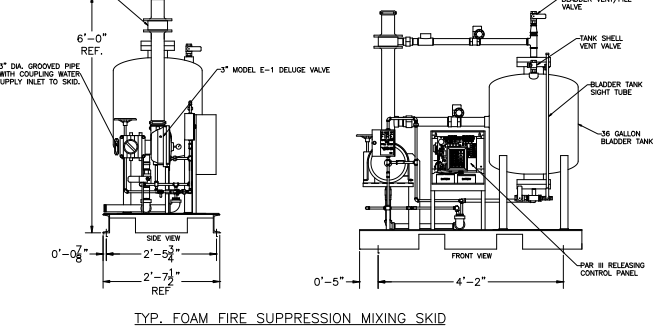
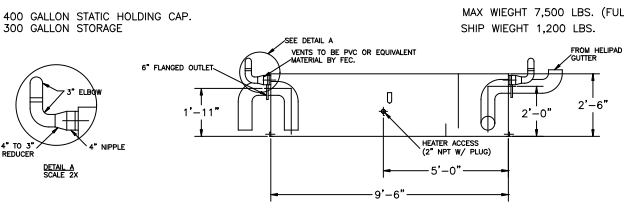
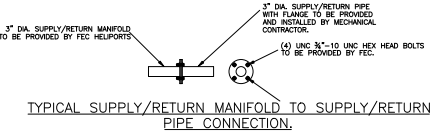
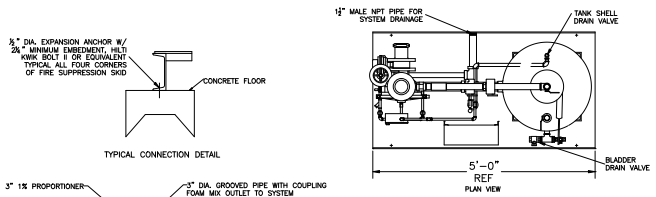
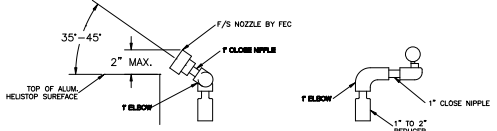
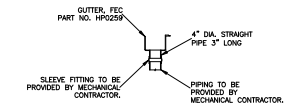
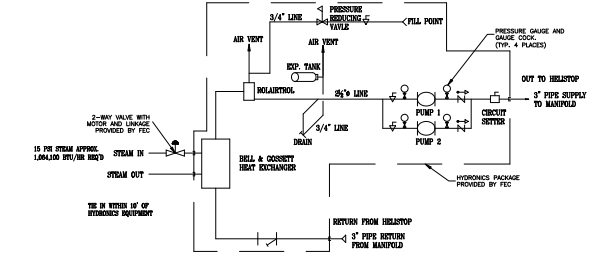
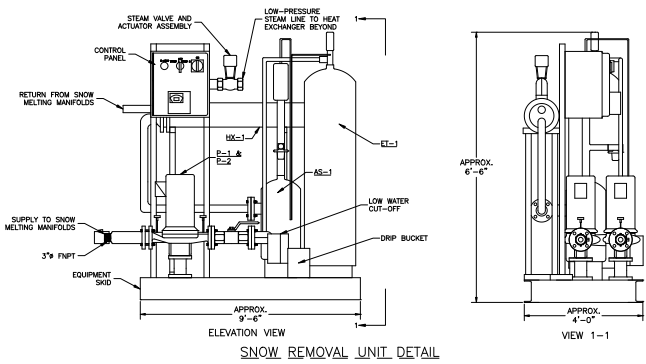


THIS DOCUMENT IS THE PROPERTY OF FEC HELIPORTS, A DIVISION OF FEDERAL EQUIPMENT COMPANY. CREATION DATE: 10/2010. INFORMATION CONTAINED ON THIS DOCUMENT SHALL NOT BE DISCLOSED TO OTHERS UNLESS THE UNDERSIGNED, OR HERETOFORE BY HIS/HER, WRITING, HAS EXPRESSLY AUTHORIZED THE DISCLOSURE. ANY REPRODUCTION OF THIS DOCUMENT WITHOUT THE EXPRESS WRITTEN PERMISSION OF FEC HELIPORTS, A DIVISION OF FEDERAL EQUIPMENT COMPANY.

REVISION BLOCK

REVISION:	DATE:	REVISION NOTES:
*	7/17/10	



UNIT NUMBER	SYSTEM	GPM	SHELL		AVERAGE WATER TEMP. (√F)	TEMP. DROP (√F)	SHELL INLET PRESS. (PSIG)	RELIEF VALVE SETTING (PSIG)	HEATING SURFACE SQ. FT.	CONTROL VALVE PRESSURE DROP (PSI)	STEAM LBS/HR	BASIS OF DESIGN MANUFACTURER AND MODEL NUMBER	REMARKS
			LENGTH (INCHES)	DIAMETER (INCHES)									
HX-1	SNOW REMOVAL	148.5	100%	8%	190	20	15	45	63	3	1066	SESCPOL PS2087 OR ITT SUB8-2	(1)

REMARKS:
(1) HX-1 PERFORMANCE BASED ON A 50% PROPYLENE GLYCOL MIXTURE.

PUMP NO.	SYSTEM	PUMP TYPE	DESIGN CAPACITY GPM	DESIGN HEAD (FEET)	MOTOR		PUMP SIZE		BASIS OF DESIGN MFR. AND MODEL	REMARKS
					HP	RPM	VOLTS/PH/Hz	SUCTION (INCHES)		
P-1	SNOW REMOVAL	IN-LINE	148.5	90.0	10	1750	480/3/60	3\"/>		
P-2	SNOW REMOVAL	IN-LINE	148.5	90.0	10	1750	480/3/60	3\"/>		

REMARKS:
(1) STAND BY;
(2) ON EMERGENCY POWER;
(3) PROVIDE WITH DISCONNECT TO BE MOUNTED ON THE SNOW REMOVAL UNIT EQUIPMENT PAD.

TAG	LOCATION	SYSTEM	SYSTEM VOLUME (GAL)	TANK VOLUME (GAL)	ACCEPTANCE VOLUME (GAL)	TANK SIZE		MANUFACTURER AND MODEL NUMBER	REMARKS
						DIAM. (INCHES)	HEIGHT (INCHES)		
ET-1		SNOW REMOVAL	410	70	53	24	46	WESSEL NTA-120	-
AS-1			410	3	-	-	-	B&G RL-3"	-

REMARKS:
(1)

BUFFALO GENERAL HOSPITAL
100 HIGH ST.
BUFFALO, NY 14203



A Division of Federal Equipment Company.
5298 River rd.
Cincinnati, Ohio 45233
(513) 621-5260
(513) 621-0524 Fax
www.FECHeliports.com

DRAWN BY: JDB
CHECKED BY: JUS

JOB NO. 9216

DATE: 7/18/07

MECHANICAL DETAILS SCALE: NONE

DWG SIZE: D
REV LTR: -

M-2