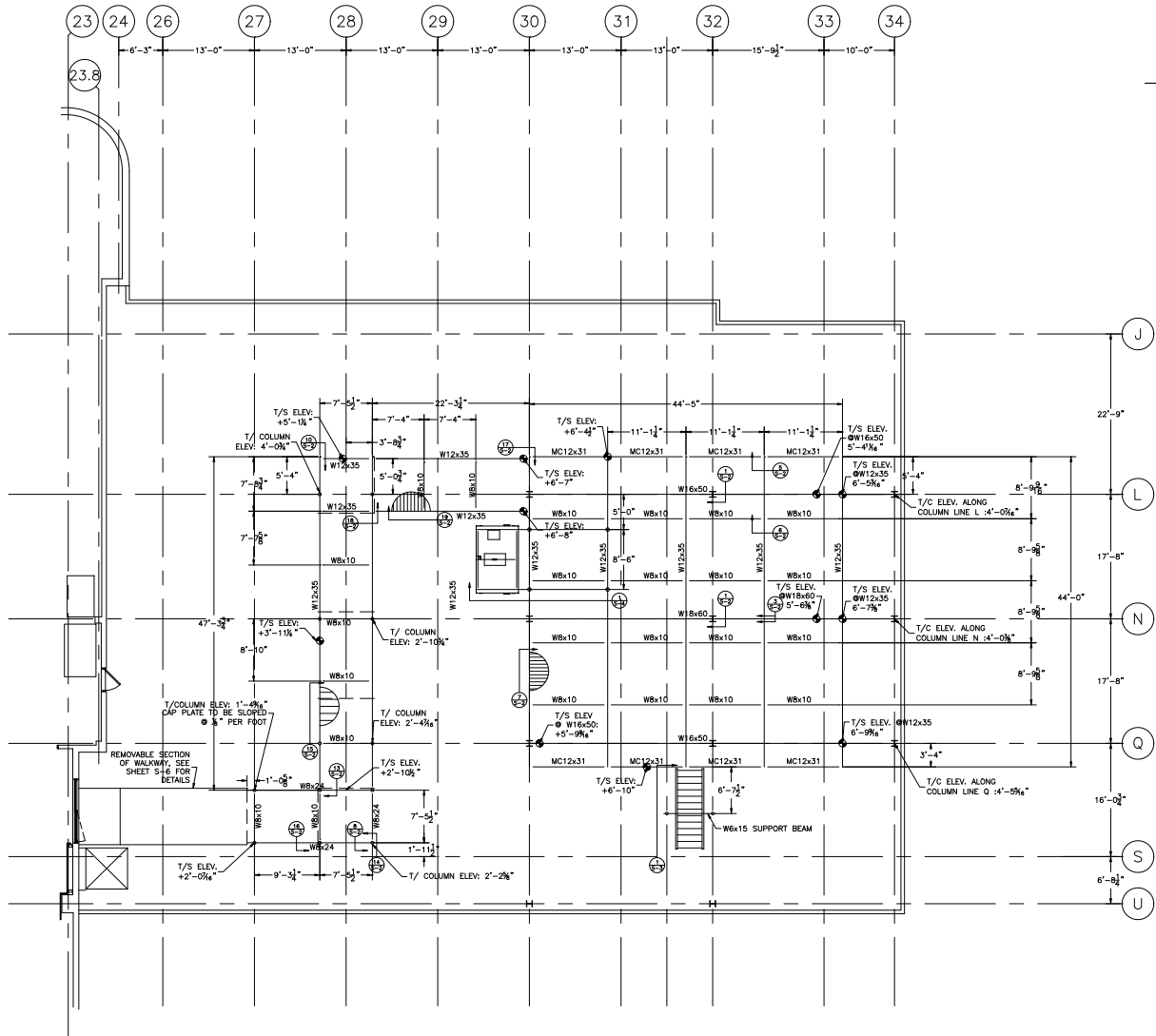


THIS DOCUMENT IS THE PROPERTY OF FEC HELIPORTS, A DIVISION OF FEDERAL EQUIPMENT COMPANY. CREATION AND REVISIONS CONTAINED ON THIS DOCUMENT SHALL NOT BE DISCLOSED TO OTHERS UNDER ANY CIRCUMSTANCES, OR REPRODUCED IN ANY MANNER WITHOUT THE EXPRESSED WRITTEN PERMISSION OF FEC HELIPORTS, A DIVISION OF FEDERAL EQUIPMENT COMPANY.

REVISION BLOCK

REVISION:	DATE:	REVISION NOTES:
A	8/3/07	CHANGED POSITION OF WALKWAY FROM SOUTHWEST CORNER TO SOUTHWEST CORNER.
B	8/8/07	MODIFIED NOTES PER REQUEST
C	8/14/07	MOVED EAST WEST PORTION OF WALKWAY TO 8' 1 1/2" SOUTH
D	8/17/07	UPDATED ELEVATIONS AND CENTERED STEAR OVER SUPPORT BEAM



- NOTES:
1. ALL STEEL TO BE HOT DIPPED GALVANIZED
  2. COORDINATE COLUMN LOCATIONS WITH HP LENS DRAWING S-100

LOADING PER 2003 IBC WITH NEW YORK AMENDMENTS:

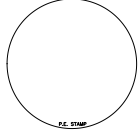
- LOAD COMBINATIONS:
- 1.) DEAD LOAD PLUS 100 PSF LIVE LOAD
  - 2.) DEAD LOAD PLUS SNOW LOAD PLUS GROSS WEIGHT OF HELICOPTER
  - 3.) DEAD LOAD PLUS IMPACT LOAD OF HELICOPTER

RAMP LOADS  
 DEAD LOADS = 17 PSF + SNOW LOAD  
 LIVE LOADS = 100 PSF

DESIGN LOADS FOR HELIPAD  
 DEAD LOAD = 30 PSF  
 LIVE LOADS = 100 PSF  
 GROUND SNOW LOAD = 60 PSF  
 PLAT ROOF SNOW LOAD = 41.6 PSF  
 HELICOPTER MAX. WEIGHT = 12,000 LBS.  
 GROSS WEIGHT = TWO POINT LOADS = 6,000 LBS. EACH  
 (TOTAL LOAD = 12,000 LBS.)  
 IMPACT LOADS = TWO POINT LOADS = 0.75 X 12,000 LBS. = 9,000 LBS. EACH  
 (TOTAL LOAD = 18,000 LBS.)

CONCENTRATED LOADS APPLIED OVER ANY ONE SQUARE FOOT.  
 SAFETY NET LOADING = 250 LBS. CONCENTRATED LOAD OR  
 = 25 PSF LIVE LOAD  
 FUEL/WATER SEPARATOR LOAD = 7,500 lbs.

Buffalo General Hospital  
 100 High St.  
 Buffalo, NY 14203



A Division of  
 Federal Equipment Company,  
 5298 River rd.  
 Cincinnati, Ohio 45233  
 (513) 621-5260  
 (513) 621-0524 Fax  
 www.FECHeliports.com

DRAWN BY: JDB CHECKED BY: JJS

JOB NO. 9216

DATE: 7/18/07

STRUCTURAL STEEL ARRANGEMENT  
 SCALE: 1/8" = 1'-0"

DWG SIZE: D REV LTR: D

S-1