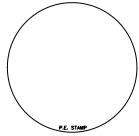


THIS DOCUMENT IS THE PROPERTY OF FEC HELIPORTS, A DIVISION OF FEDERAL EQUIPMENT COMPANY. IT IS TO BE RETURNED TO THE DIVISION OF FEDERAL EQUIPMENT COMPANY. ANY REPRODUCTION OR TRANSMISSION OF THIS DOCUMENT WITHOUT THE EXPRESS WRITTEN PERMISSION OF FEC HELIPORTS, A DIVISION OF FEDERAL EQUIPMENT COMPANY.

REVISION BLOCK

REVISION:	DATE:	REVISION NOTES:
A	8/3/07	MAKE CHANGES PER CHANGE IN PLACEMENT OF HELIPORT FROM NORTHWEST TO SOUTHWEST CORNER.
B	8/13/07	MAKE CHANGES PER CHANGE IN PLACEMENT.

BUFFALO GENERAL HOSPITAL
100 HIGH ST.
BUFFALO, NY 14203



A Division of
Federal Equipment Company,
5298 River rd.
Cincinnati, Ohio 45233
(513) 621-5260
(513) 621-0524 Fax
www.FECHeliports.com

DRAWN BY: JDB CHECKED BY: JUS

JOB NO. 9216

DATE: 7/18/07

STRUCTURAL STEEL
DETAILS

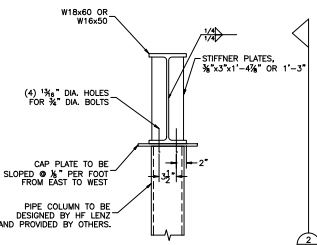
SCALE: 1" = 1'-0"

DWG SIZE: D B

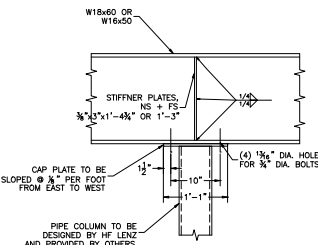
S-2

STEEL GENERAL NOTES:

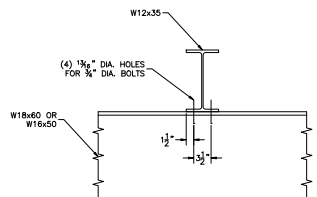
- STRUCTURAL STEEL HAS BEEN DESIGNED AND SHALL BE FABRICATED AND DETECTED IN ACCORDANCE WITH THE SPECIFICATION FOR THE DESIGN, FABRICATION AND ERECTION OF STRUCTURAL STEEL FOR BUILDINGS, AS PUBLISHED IN THE AISC DESIGN AISC MANUAL.
- ALL STRUCTURAL STEEL TO BE ASTM A588, FY = 50 KSI. ALL TUBING TO BE ASTM A560, O.D. 8" FY = 40 KSI. ALL OTHER SHAPES AND MISC. STEEL TO BE ASTM A58, FY = 36 KSI UNLESS NOTED OTHERWISE.
- ALL CONNECTIONS UNLESS NOTED OTHERWISE, SHALL BE MADE USING A SINGLE ROW OF THE MAXIMUM NUMBER OF 3/4" DIAMETER ASTM A-325 BOLTS AT A MAXIMUM SPACING OF 8" BETWEEN THAT WILL FIT WITHIN THE DEPTH OF THE MEMBER. DISCRETELY REINFORCED CONNECTIONS MAY BE USED IN LIEU OF THE ABOVE.
- DESIGN BEAM CONNECTIONS FOR THE REACTION DUE TO THE MAXIMUM UNIFORM LOAD WHEN THE BEAM CAN SUPPORT IT TO BE 3/4" DIAMETER BEAM YIELD STRENGTH, BOLTS TO BE 3/4" DIAMETER.
- ALL WELDING SHALL BE IN ACCORDANCE WITH THE LATEST AISC AND AIAA SPECIFICATIONS. ELECTRODES TO BE E-70XX.
- ALL STEEL MUST BE INSTALLED WITH THE VERTICAL AXIS ORIENTED SUCH THAT ALL THE BEAM TOP FLANGES PROVIDE A FLAT PLATE FOR IMPROVE BEARING OF THE BEAM.
- DESIGN SHEAR PLATE CONNECTIONS SUCH THAT A 1/2" MAXIMUM SPACING BETWEEN THE CONNECTING BEAM AND THE FRAMING BEAM WEB EXIST.



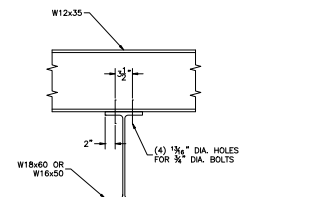
1S-1 W18x60 OR W16x50 TO COLUMN CONNECTION



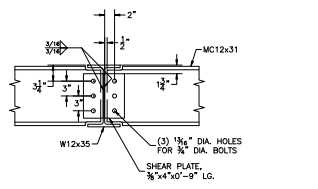
1S-2 W18x60 OR W16x50 TO COLUMN CONNECTION



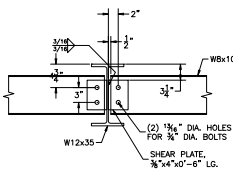
1S-3 W12x35 TO W18x60 FOR W16x50 CONNECTION



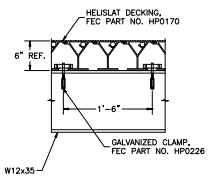
1S-4 W12x35 TO W18x60 FOR W16x50 CONNECTION



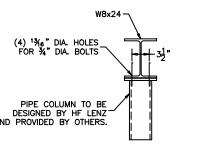
1S-5 MC12x31 TO W12x35 CONNECTION



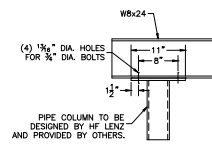
1S-6 WBx10 TO W12x35 CONNECTION



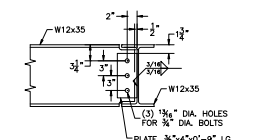
1S-7 TYPICAL HELIPLAT CONNECTION



1S-8 WBx24 TO COLUMN CONNECTION



1S-9 WBx24 TO COLUMN CONNECTION



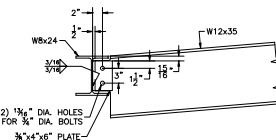
1S-10 W12x35 TO W12x35 CONNECTION

DELETED

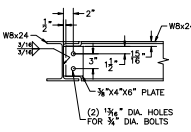
1S-11 W12x35 TO W12x35 TO COLUMN CONNECTION

DELETED

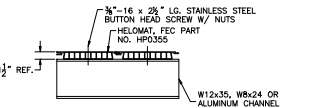
1S-12 W12x35 TO W12x35 TO COLUMN CONNECTION



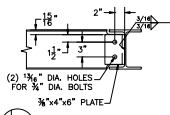
1S-13 W12x35 TO WBx24 CONNECTION



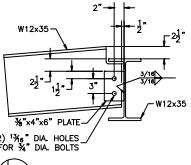
1S-14 WBx24 TO WBx24 CONNECTION



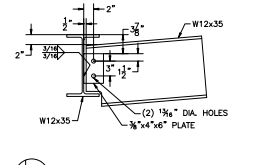
1S-15 TYP. HELIPLAT CONNECTION



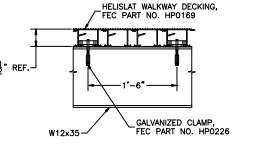
1S-16 WBx10 TO WBx24 CONNECTION



1S-17 WALKWAY TO DECK CONNECTION



1S-18 W12x35 TO W12x35 CONNECTION AT CHANGE FROM WALKWAY SLAT TO HELIPLAT



1S-19 TYPICAL WALKWAY SLAT CONNECTION